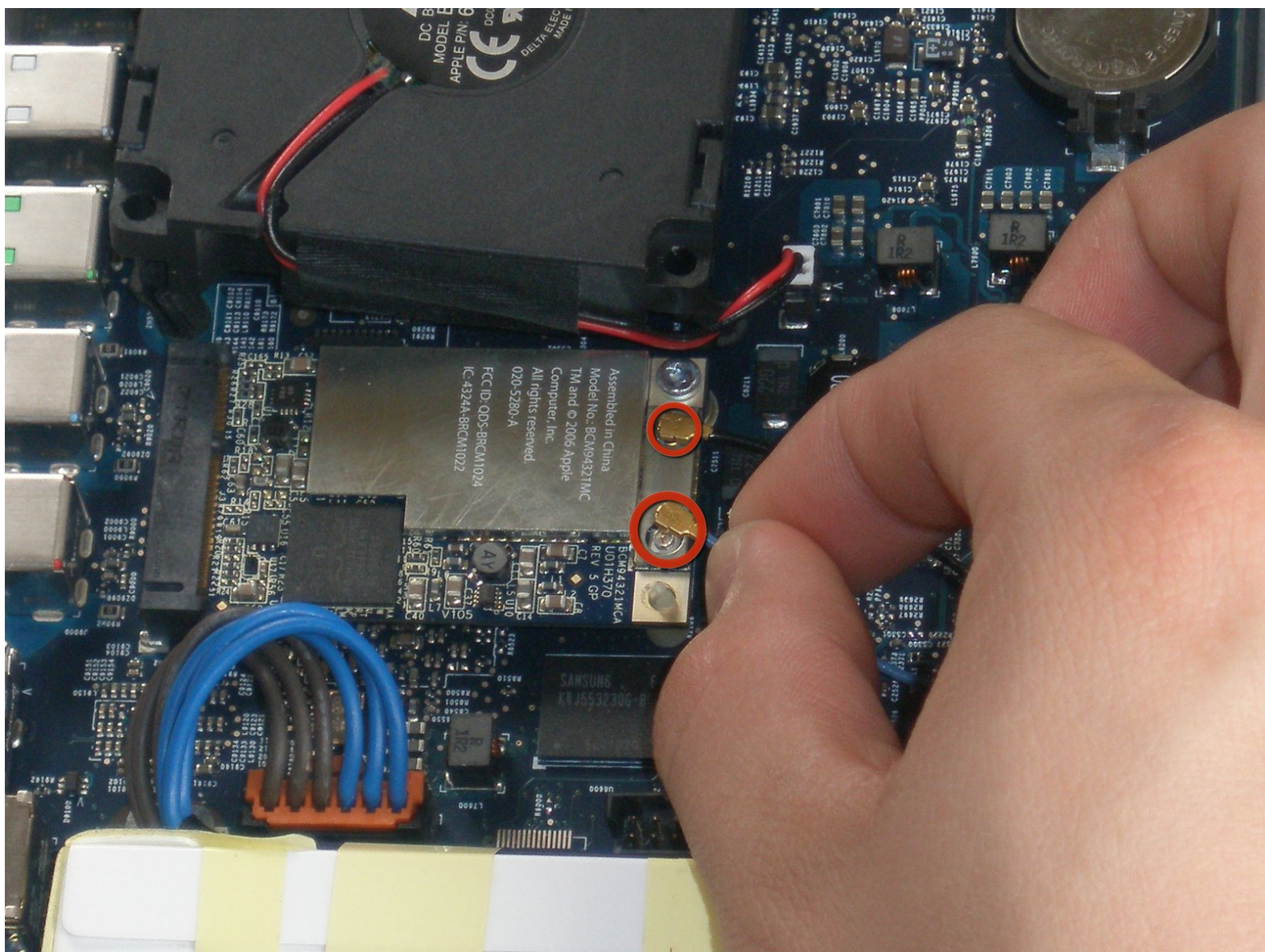




# Apple TV 1st Generation AirPort Card Replacement

Replace the AirPort card in your Apple TV 1st Generation.

Written By: ropel



---

## INTRODUCTION

Replace the AirPort card in your Apple TV 1st Generation.



### TOOLS:

- [T10 Torx Screwdriver](#) (1)
  - [T8 Torx Screwdriver](#) (1)
-

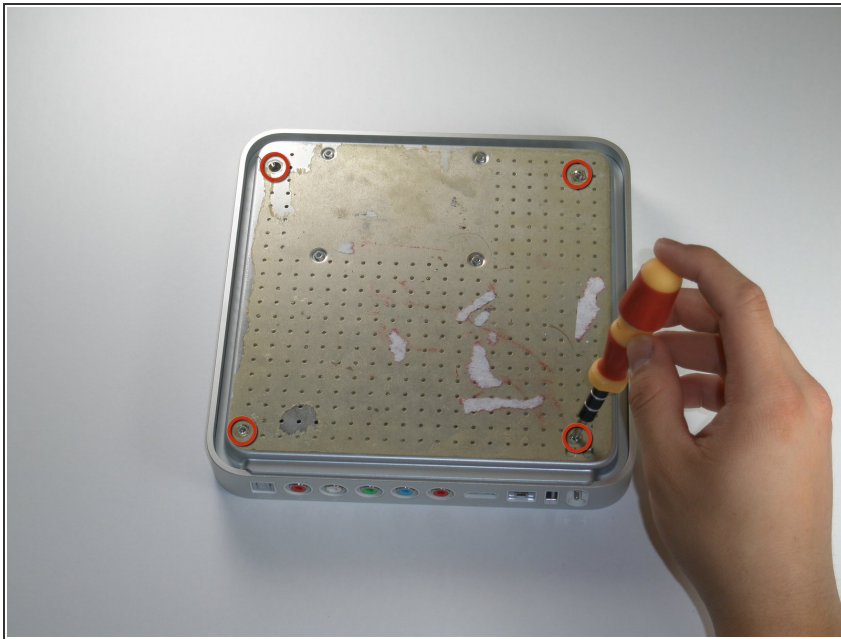
## Step 1 — Lower Case



- ✦ Flip the Apple TV over so that the bottom of the unit is facing up.
- ⓘ You need to remove the rubber base to get access to the screws.
  - Starting at one side of the device, use a hairdryer or a heat gun to soften the adhesive holding the rubber base in place.
- ⚠ The rubber base will be hot after heating, take extreme caution while proceeding to avoid personal injury.
  - While the adhesive is still warm, peel the bottom of the rubber base upwards to detach it from the metal plate.
  - Repeat the procedure described above until the rubber base has been completely removed.



## Step 2



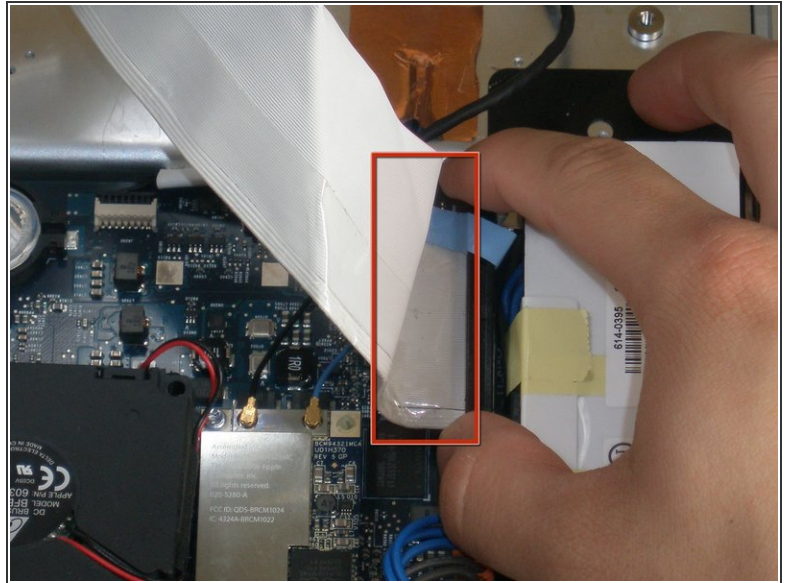
- Remove the four T10 Torx screws that secure the lower case to the upper case.

## Step 3



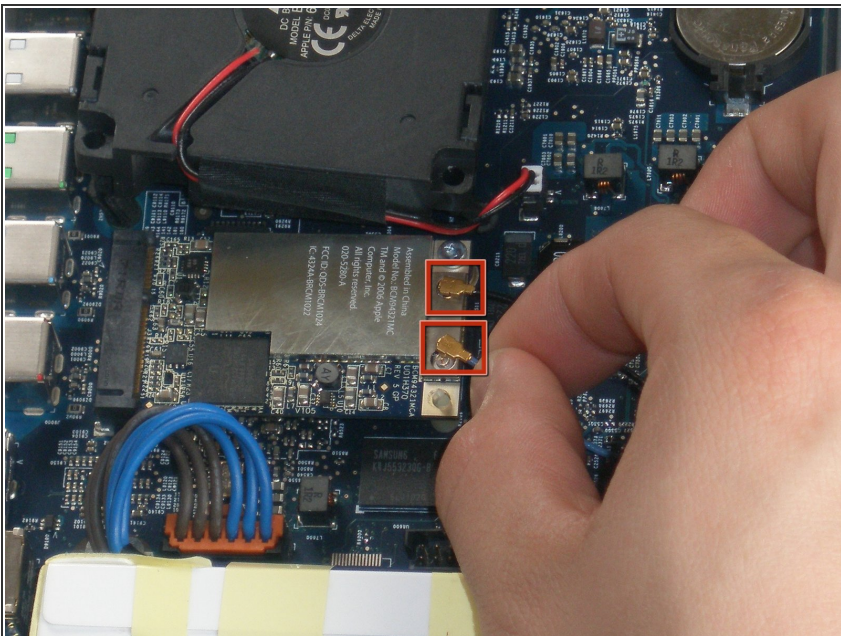
- Carefully lift the lower case from the upper case enough to allow access to the internals of the Apple TV.
- ⚠ Be aware that the hard drive is physically attached to the lower case and that a ribbon cable runs from the drive to the logic board in the upper case.

## Step 4



- Carefully pull the hard drive data cable straight up from its socket on the logic board.
- ☑ During reassembly, make sure the hard drive data cable is firmly seated in its socket on the logic board; otherwise, during boot-up you will see a flashing question mark "?".

## Step 5 — AirPort Card



- Pry the AirPort antenna cables straight up from their sockets on the logic board.

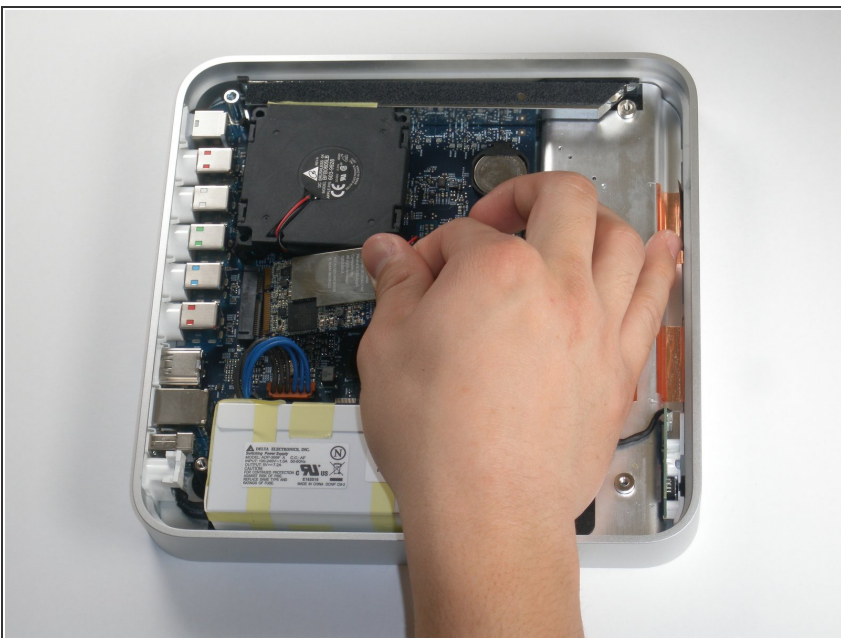


## Step 6



- Remove the single T8 Torx screw securing the AirPort card to the logic board.

## Step 7



- Cautiously lift the AirPort card and pull it straight away. Slide it from its socket on the logic board.

To reassemble your device, follow these instructions in reverse order.