



Apple TV 1st Generation Hard Drive Replacement

Replace the hard drive in your Apple TV 1st Generation.

Written By: Walter Galan



INTRODUCTION

Replace the hard drive in your Apple TV 1st Generation.



TOOLS:

- [T10 Torx Screwdriver](#) (1)
- [T8 Torx Screwdriver](#) (1)



PARTS:

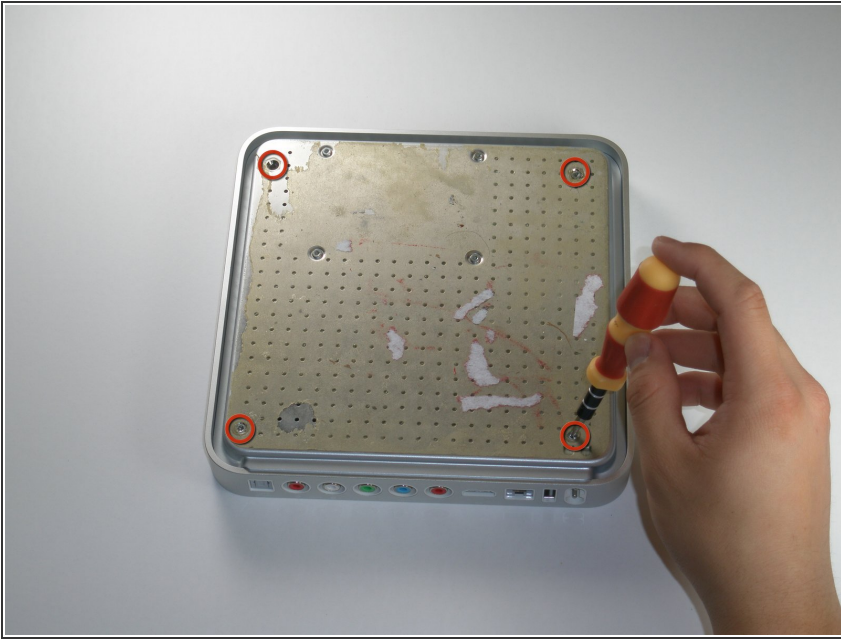
- [Replacement drive with a 44 pin Parallel ATA \(PATA\) connector](#) (1)

Step 1 — Lower Case



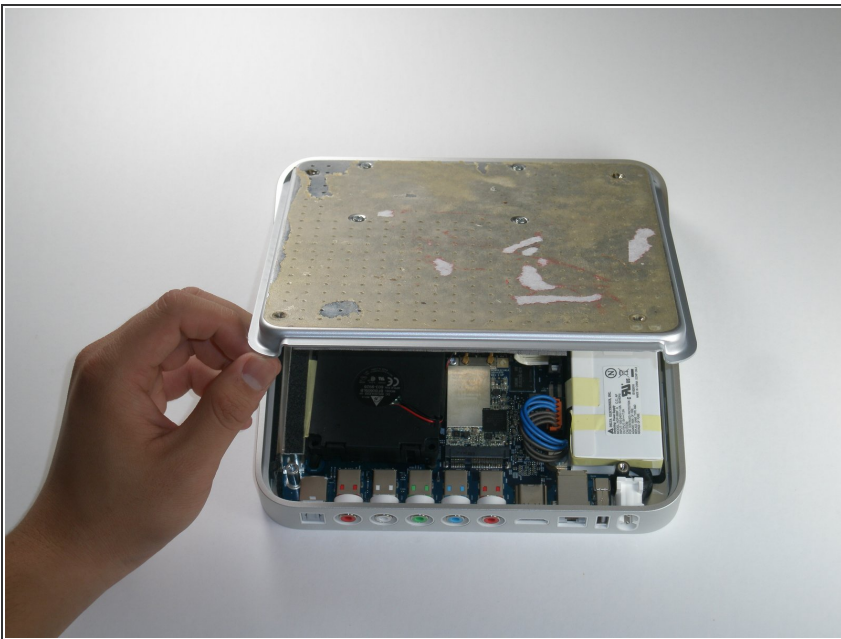
- ✦ Flip the Apple TV over so that the bottom of the unit is facing up.
- ⓘ You need to remove the rubber base to get access to the screws.
 - Starting at one side of the device, use a hairdryer or a heat gun to soften the adhesive holding the rubber base in place.
- ⚠ The rubber base will be hot after heating, take extreme caution while proceeding to avoid personal injury.
 - While the adhesive is still warm, peel the bottom of the rubber base upwards to detach it from the metal plate.
 - Repeat the procedure described above until the rubber base has been completely removed.

Step 2



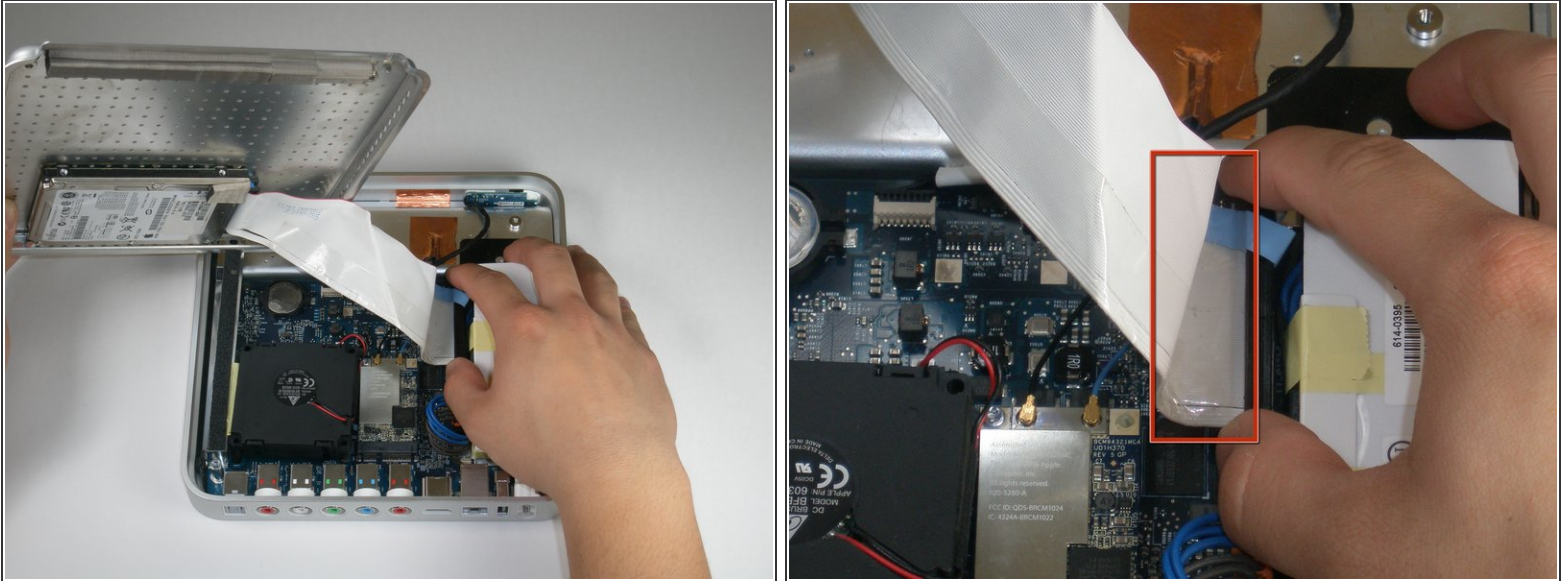
- Remove the four T10 Torx screws that secure the lower case to the upper case.

Step 3



- Carefully lift the lower case from the upper case enough to allow access to the internals of the Apple TV.
- ⚠ Be aware that the hard drive is physically attached to the lower case and that a ribbon cable runs from the drive to the logic board in the upper case.

Step 4



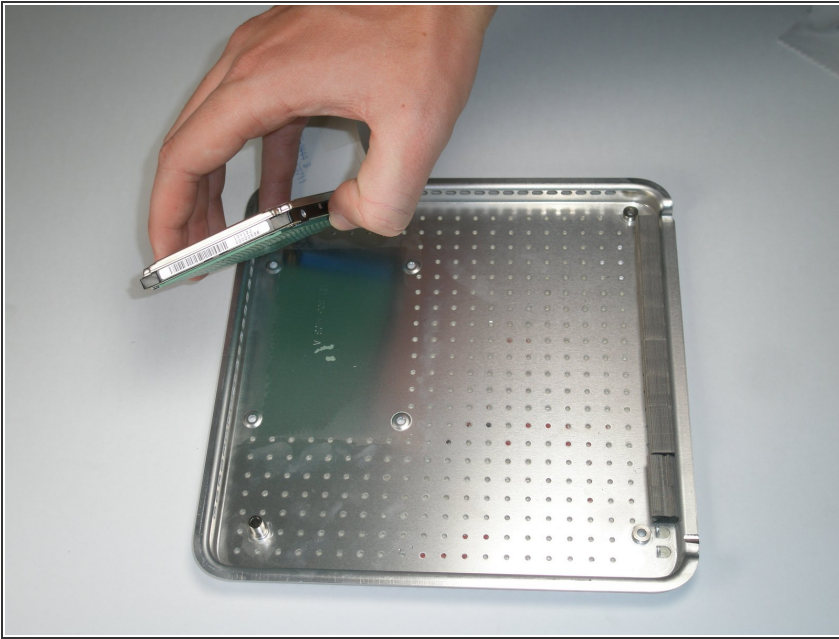
- Carefully pull the hard drive data cable straight up from its socket on the logic board.
- ✦ During reassembly, make sure the hard drive data cable is firmly seated in its socket on the logic board; otherwise, during boot-up you will see a flashing question mark "?".

Step 5 — Hard Drive



- Remove the four T8 Torx screws securing the hard drive to the lower case.

Step 6



- Peel and remove the hard drive up off the lower case.
- ⓘ The hard drive is held on to the lower case with mild adhesive.
- Disconnect the hard drive data cable from its socket on the hard drive.
- ★ If you are replacing your hard drive, ensure to transfer the hard drive data cable to your new hard drive.
- Hard drive remains.

Step 7 — Hard Drive



- Align the new hard drive with the screw holes on the lower case.
- While holding the hard drive in place, insert and tighten the screws back into the lower case.
- ⓘ Don't forget to reconnect the hard drive data cable to its socket on the logic board.

To reassemble your device, follow these instructions in reverse order.