



Apple TV 1st Generation Logic Board Replacement

Replace your Apple TV's 1st Generation logic board.

Written By: kelsey8800



INTRODUCTION

Replace your Apple TV's 1st Generation logic board.



TOOLS:

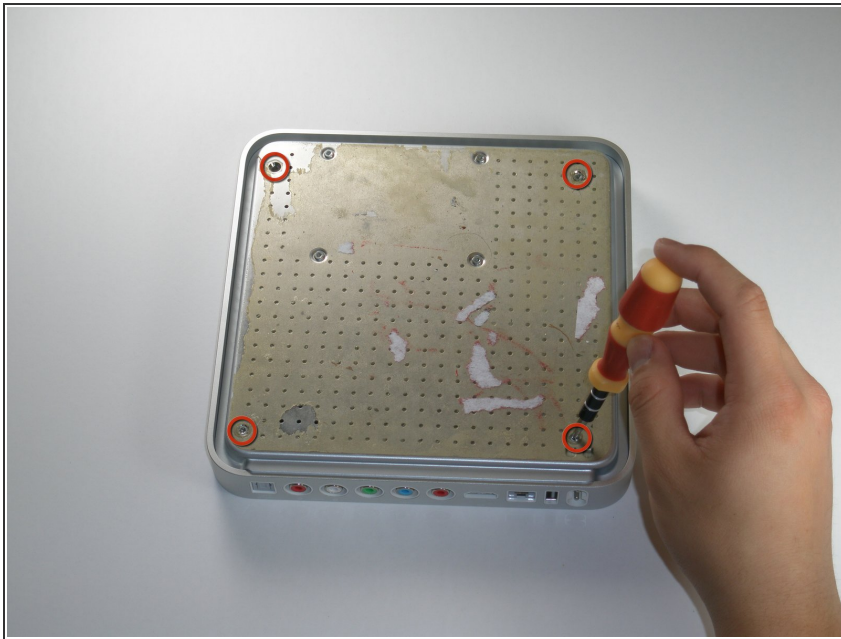
- [T10 Torx Screwdriver](#) (1)
 - [T20 Torx Screwdriver](#) (1)
 - [T8 Torx Screwdriver](#) (1)
 - [Tweezers](#) (1)
-

Step 1 — Lower Case



- ✦ Flip the Apple TV over so that the bottom of the unit is facing up.
- ⓘ You need to remove the rubber base to get access to the screws.
 - Starting at one side of the device, use a hairdryer or a heat gun to soften the adhesive holding the rubber base in place.
- ⚠ The rubber base will be hot after heating, take extreme caution while proceeding to avoid personal injury.
 - While the adhesive is still warm, peel the bottom of the rubber base upwards to detach it from the metal plate.
 - Repeat the procedure described above until the rubber base has been completely removed.

Step 2



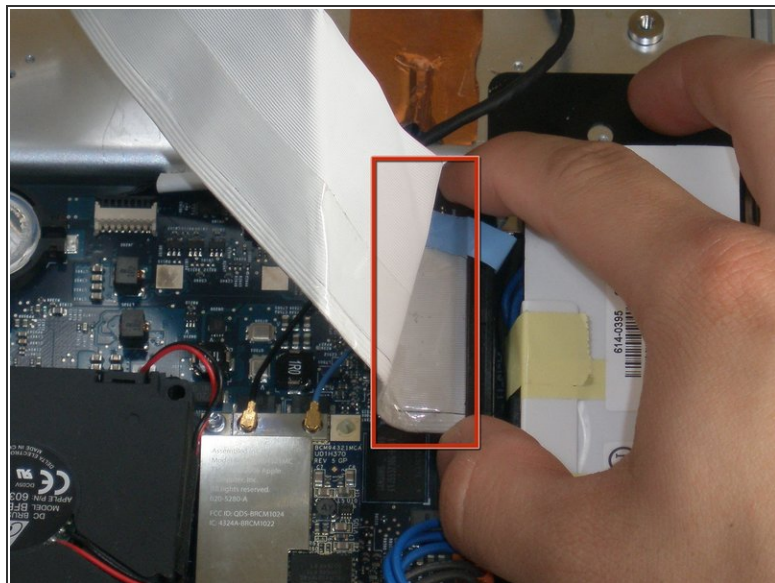
- Remove the four T10 Torx screws that secure the lower case to the upper case.

Step 3



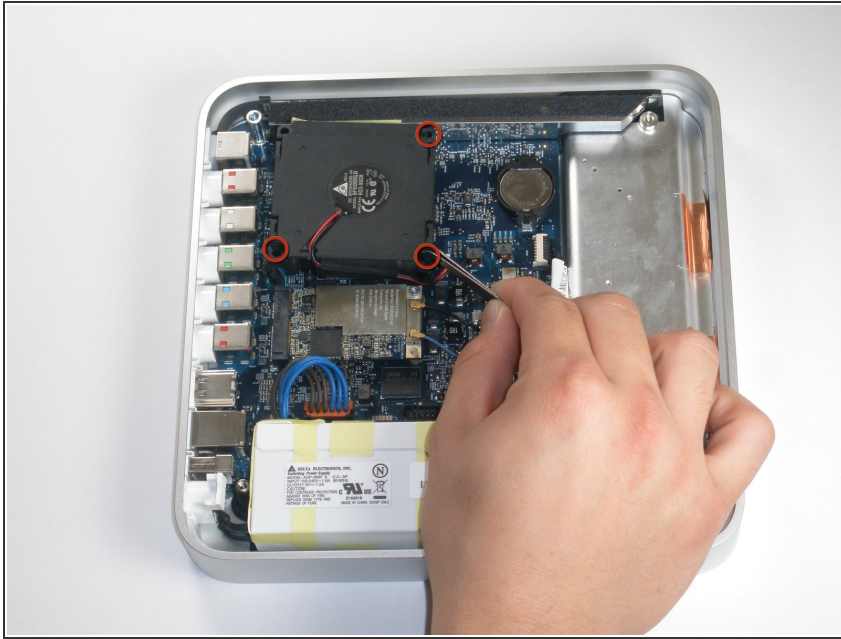
- Carefully lift the lower case from the upper case enough to allow access to the internals of the Apple TV.
- ⚠ Be aware that the hard drive is physically attached to the lower case and that a ribbon cable runs from the drive to the logic board in the upper case.

Step 4



- Carefully pull the hard drive data cable straight up from its socket on the logic board.
- ☑ During reassembly, make sure the hard drive data cable is firmly seated in its socket on the logic board; otherwise, during boot-up you will see a flashing question mark "?".

Step 5 — Fan



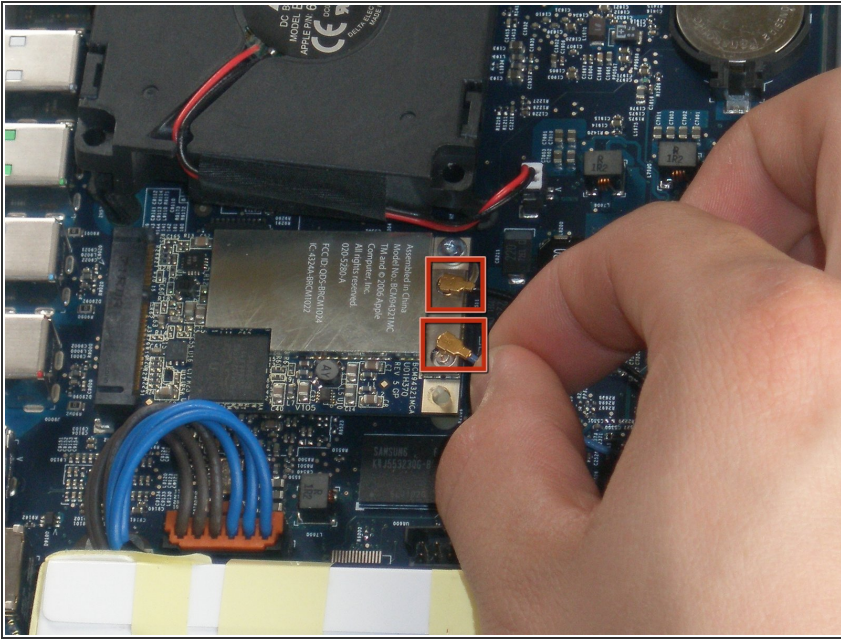
- ❗ The fan is held in place by three rubber posts.
- Using a pair of tweezers, squeeze the top of each post and push the post down into the hole. Repeat for all three posts.
- ❗ During reinstallation, it helps to lubricate the rubber posts. Try weaving a string through the holes in the posts to pull them up through the mounting points.
- ⚠ Do not excessively pull on the posts, as they may rip.

Step 6



- Using a pair of tweezers, pull the fan connector straight up from its socket on the logic board.
- Lift and remove the fan out of the upper case.

Step 7 — AirPort Card



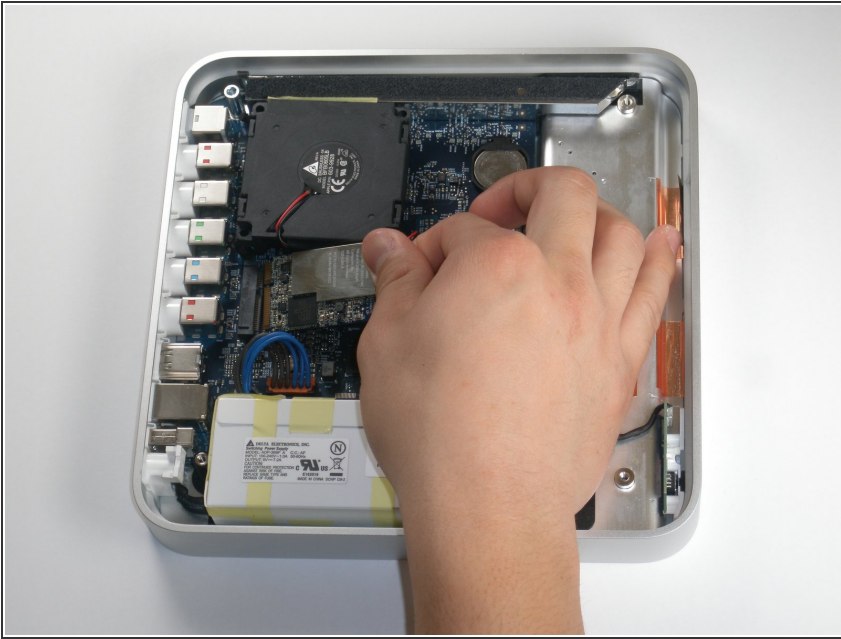
- Pry the AirPort antenna cables straight up from their sockets on the logic board.

Step 8



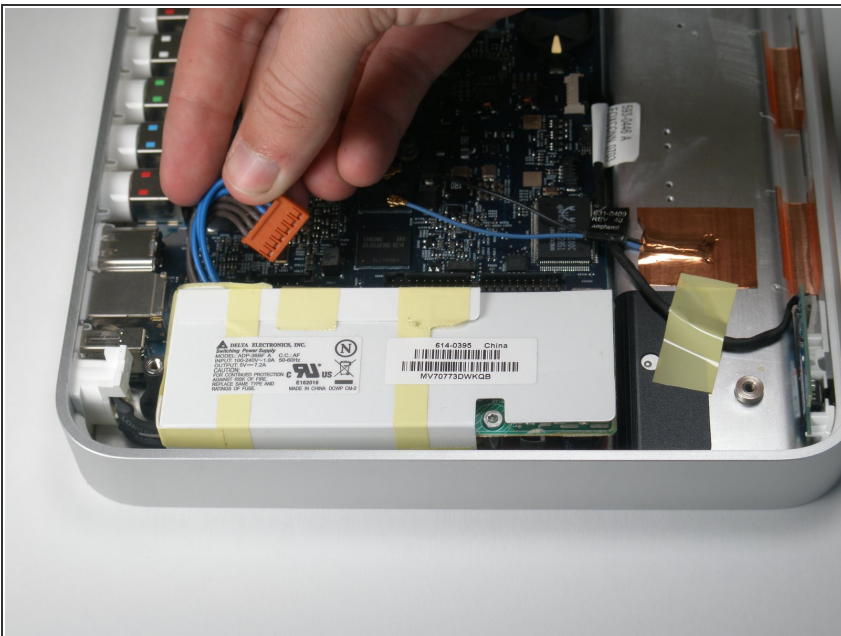
- Remove the single T8 Torx screw securing the AirPort card to the logic board.

Step 9



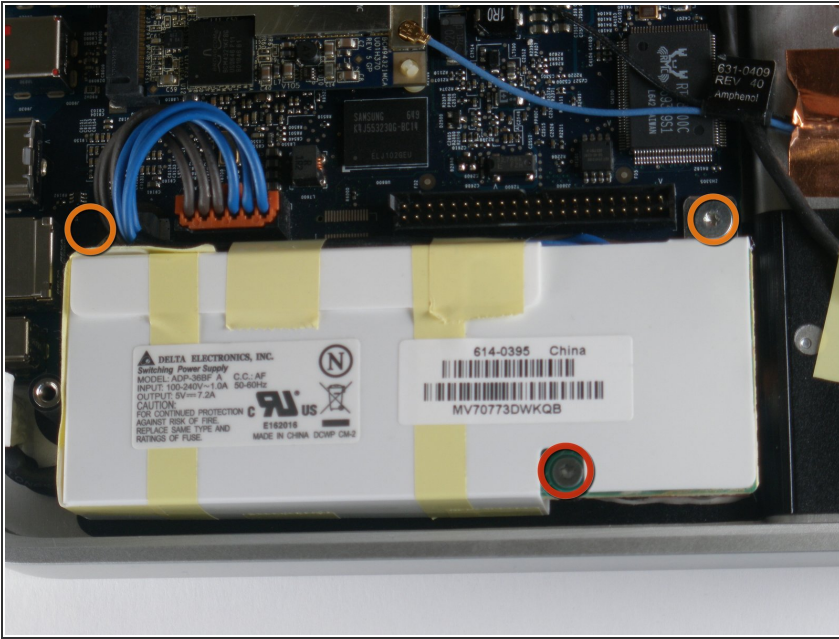
- Cautiously lift the AirPort card and pull it straight away. Slide it from its socket on the logic board.

Step 10 — Power Supply



- Disconnect the power cable straight up from its socket on the logic board.
- ⓘ There is a release tab that must be pushed inwards in conjunction with pulling to release the power cable
- ★ Make sure to pull the connector straight up from its socket and not toward the face of the logic board.

Step 11



- Remove the following three screws securing the power supply to the upper case:
 - One 4.8 mm T8 Torx screw
 - Two 5.8 mm T8 Torx screws

Step 12



- Use your finger to push and dislodge the AC power connector inwards, towards the power supply.
- ⓘ This should pop out easily.

Step 13



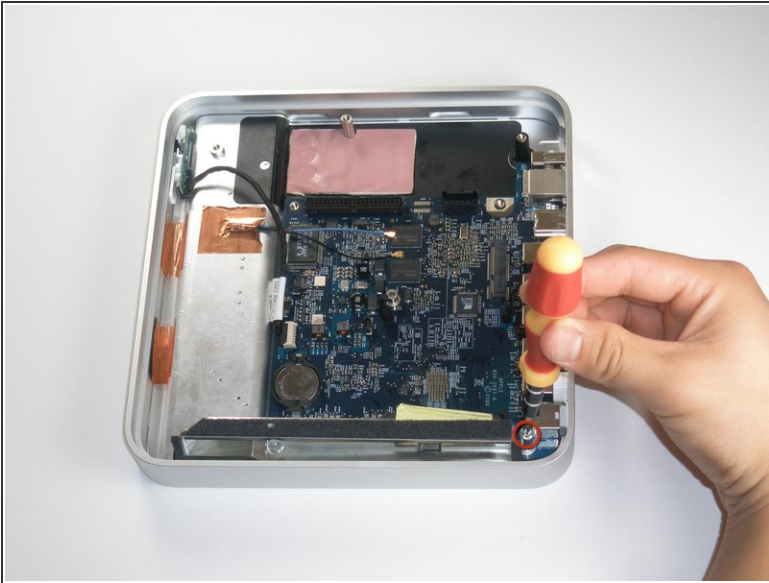
- Power supply remains.

Step 14 — Logic Board



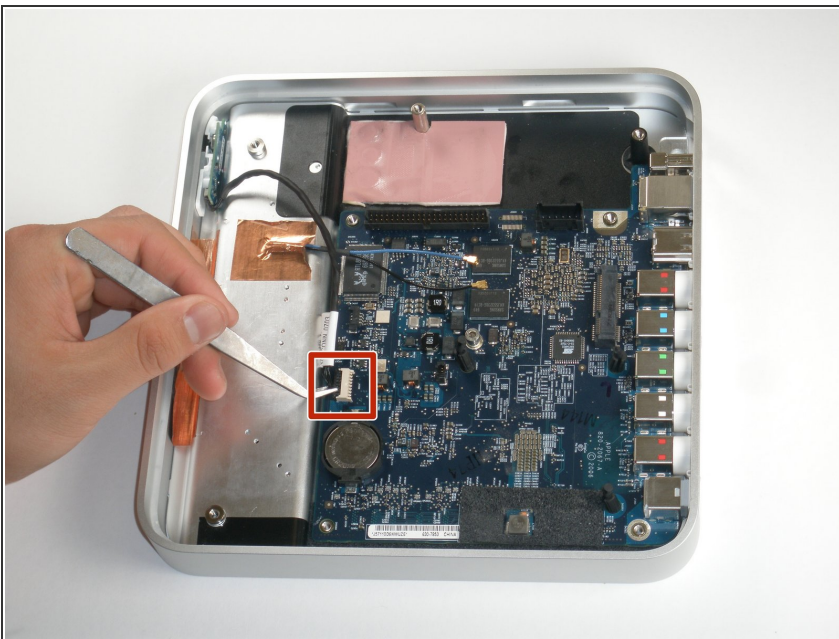
- Remove the T8 Torx screw securing the metal shield to the case.
- ⓘ To remove the T8 screw, you must insert the screwdriver through the access hole in the metal shield. The access hole is located near the PRAM battery.

Step 15



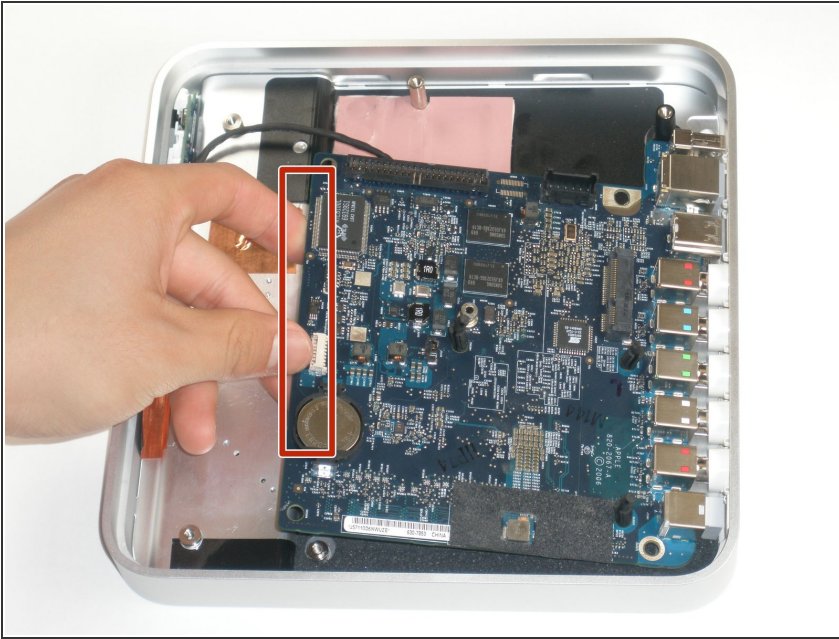
- Remove the T20 screw located near the digital audio port.
- Lift and remove the metal shield from the upper case of the Apple TV.

Step 16



- Use a pair of tweezers to pull the IR cable straight away from its socket on the logic board.
- ⓘ Make sure to pull the connector parallel to the face of the logic board. Do not pull the connector straight up.

Step 17



- Lift the left edge of the logic board (nearest the PRAM battery) upwards and slide it out of the case, away from the ports.
- ⚠ Be careful not to damage the ports when sliding the logic board out of case.
- The logic board remains.

To reassemble your device, follow these instructions in reverse order.