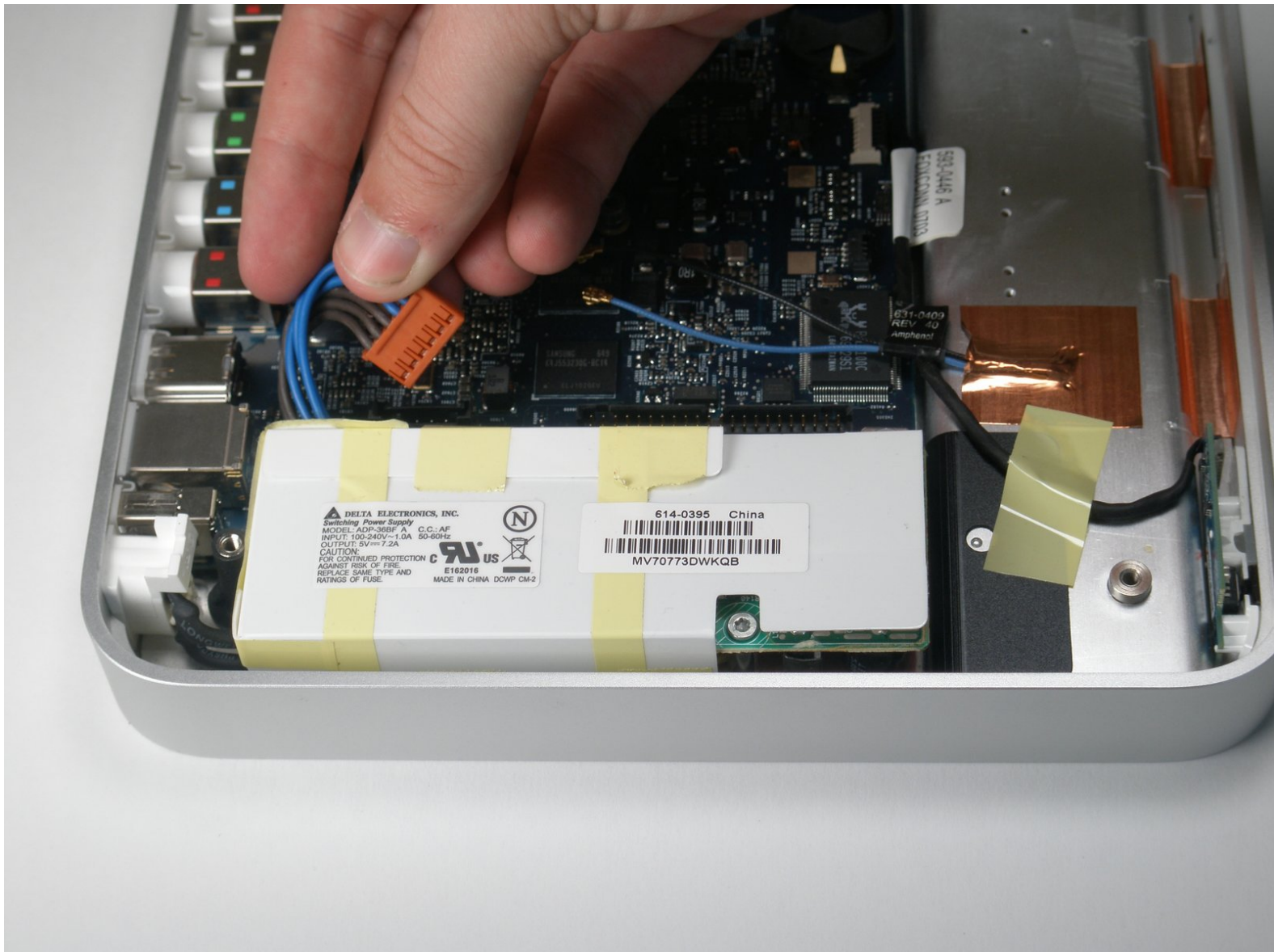




# Apple TV 1st Generation Power Supply Replacement

Replace the power supply in your Apple TV 1st Generation.

Written By: Celerityblur



---

## INTRODUCTION

Replace the power supply in your Apple TV 1st Generation.



### TOOLS:

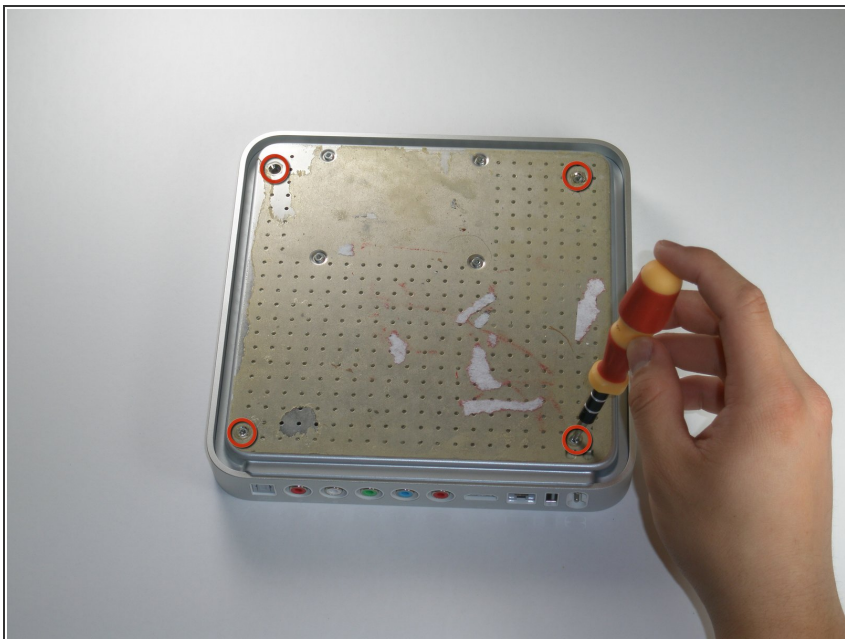
- [T10 Torx Screwdriver](#) (1)
  - [T8 Torx Screwdriver](#) (1)
-

## Step 1 — Lower Case



- ✦ Flip the Apple TV over so that the bottom of the unit is facing up.
- ⓘ You need to remove the rubber base to get access to the screws.
  - Starting at one side of the device, use a hairdryer or a heat gun to soften the adhesive holding the rubber base in place.
- ⚠ The rubber base will be hot after heating, take extreme caution while proceeding to avoid personal injury.
  - While the adhesive is still warm, peel the bottom of the rubber base upwards to detach it from the metal plate.
  - Repeat the procedure described above until the rubber base has been completely removed.

## Step 2



- Remove the four T10 Torx screws that secure the lower case to the upper case.

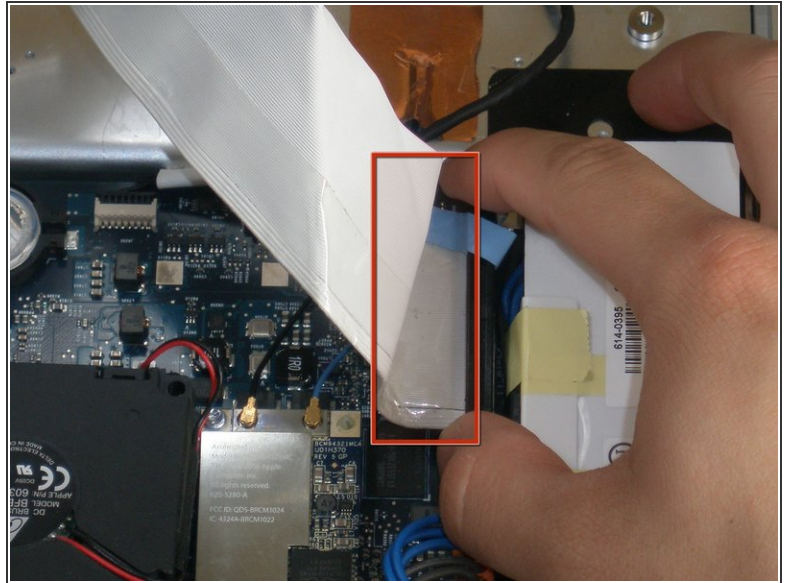
## Step 3



- Carefully lift the lower case from the upper case enough to allow access to the internals of the Apple TV.
- ⚠ Be aware that the hard drive is physically attached to the lower case and that a ribbon cable runs from the drive to the logic board in the upper case.

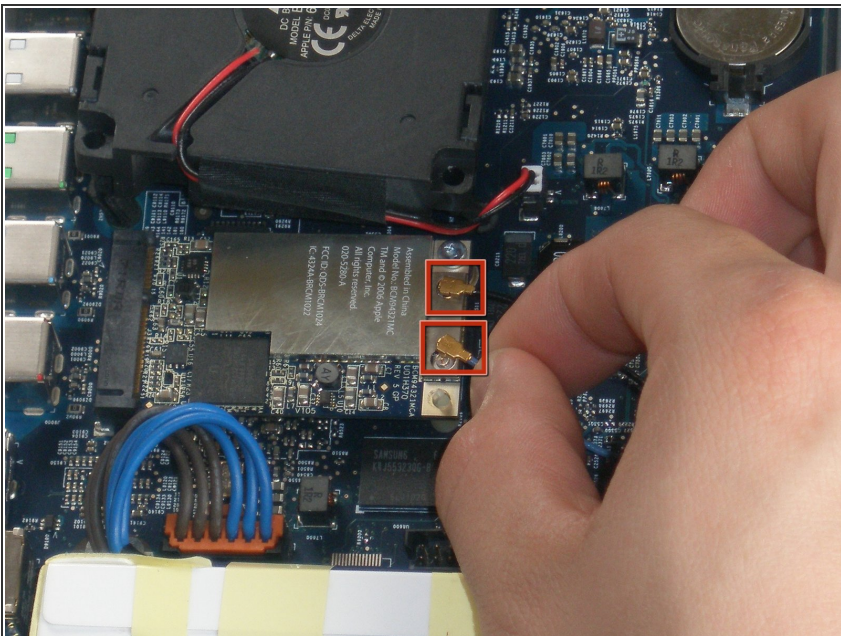


## Step 4



- Carefully pull the hard drive data cable straight up from its socket on the logic board.
- ✦ During reassembly, make sure the hard drive data cable is firmly seated in its socket on the logic board; otherwise, during boot-up you will see a flashing question mark "?".

## Step 5 — AirPort Card



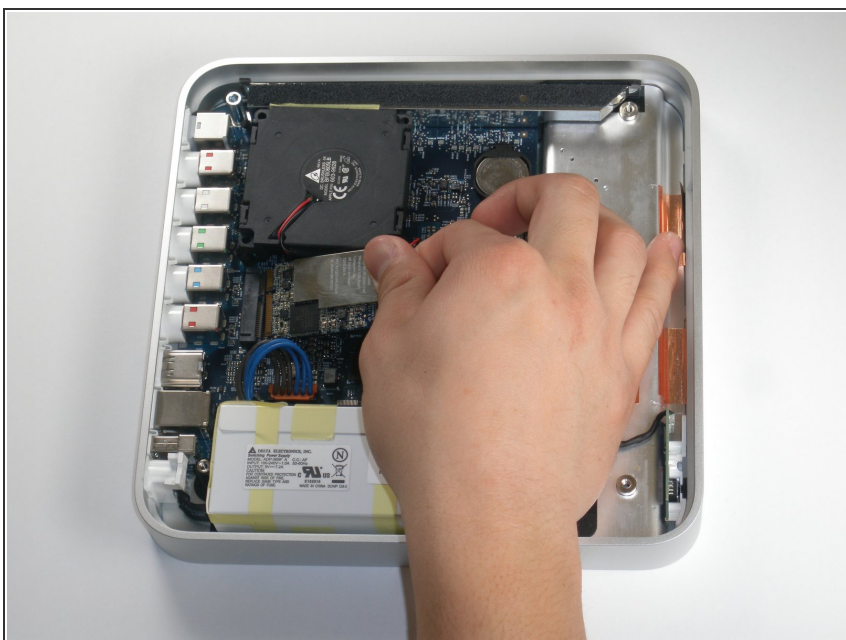
- Pry the AirPort antenna cables straight up from their sockets on the logic board.

## Step 6



- Remove the single T8 Torx screw securing the AirPort card to the logic board.

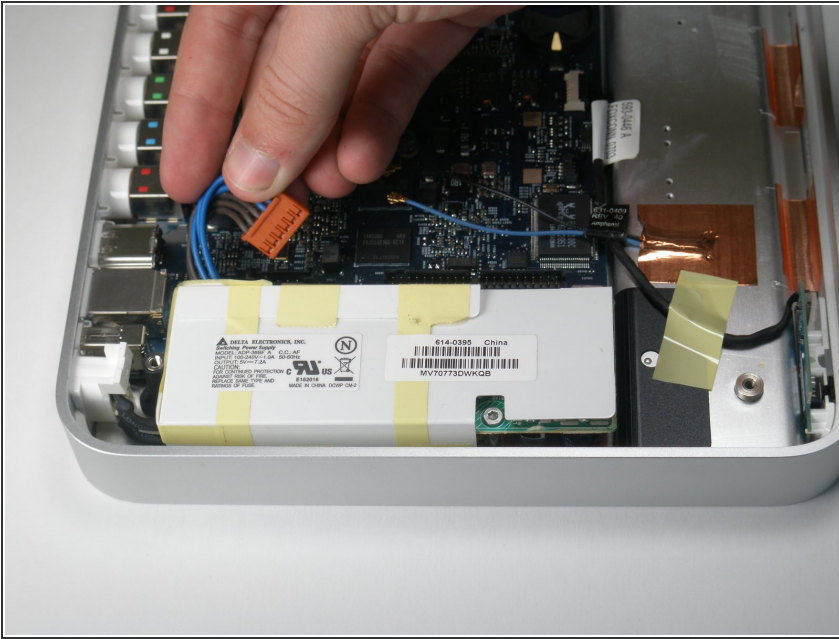
## Step 7



- Cautiously lift the AirPort card and pull it straight away. Slide it from its socket on the logic board.

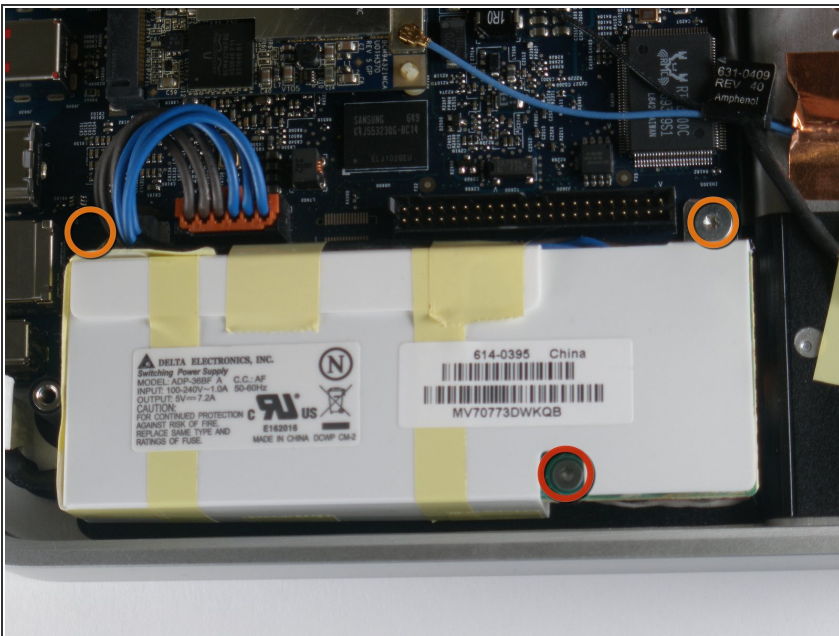


## Step 8 — Power Supply



- Disconnect the power cable straight up from its socket on the logic board.
- ⓘ There is a release tab that must be pushed inwards in conjunction with pulling to release the power cable
- ✦ Make sure to pull the connector straight up from its socket and not toward the face of the logic board.

## Step 9



- Remove the following three screws securing the power supply to the upper case:
  - One 4.8 mm T8 Torx screw
  - Two 5.8 mm T8 Torx screws

## Step 10



- Use your finger to push and dislodge the AC power connector inwards, towards the power supply.
- ⓘ This should pop out easily.

## Step 11



- Power supply remains.



To reassemble your device, follow these instructions in reverse order.