



# Apple TV 2nd Generation Logic Board Replacement

Step by step on removing the logic board in the 2nd generation Apple TV

Written By: Nicholas Ouimet



## INTRODUCTION

Removing the logic board is a very simple procedure. Hopefully you never have to do this to your Apple TV. Just a note... There is nothing wrong with my Apple TV. I made this guide for those that may need to use it one day. My Apple TV is still running well



### TOOLS:

- [Metal Spudger](#) (1)
  - [Spudger](#) (1)
  - [Phillips #1 Screwdriver](#) (1)
-

## Step 1 — Logic Board



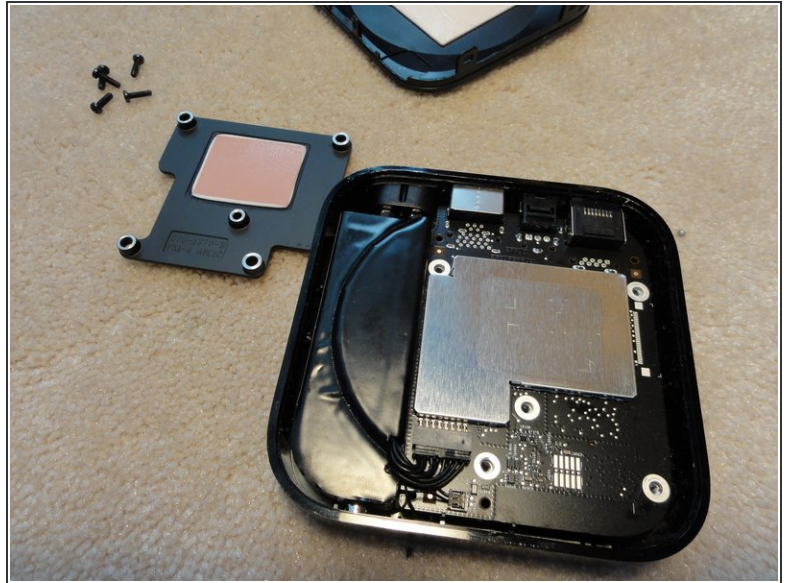
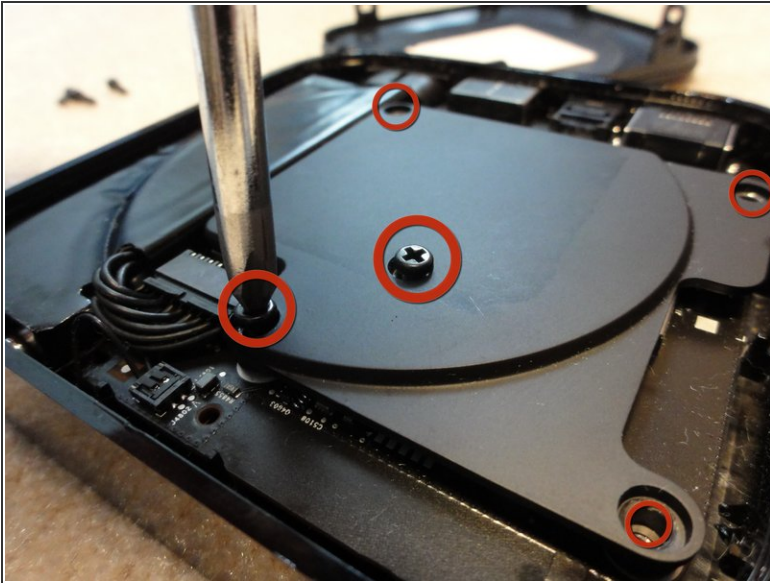
- Use a spudger to pry the bottom cover off the Apple TV.
- It may be necessary to use two spudgers (one to hold it open while you pry with the other one)

## Step 2



- Carefully remove the bottom cover from the unit

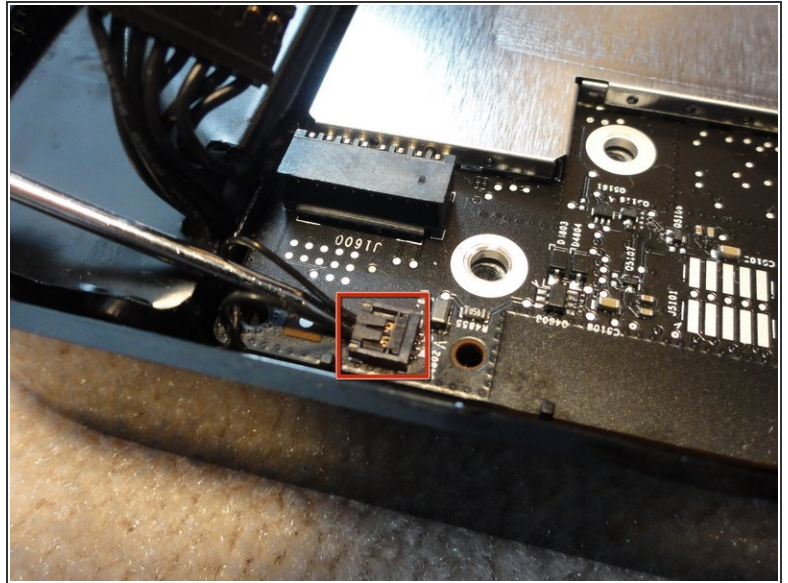
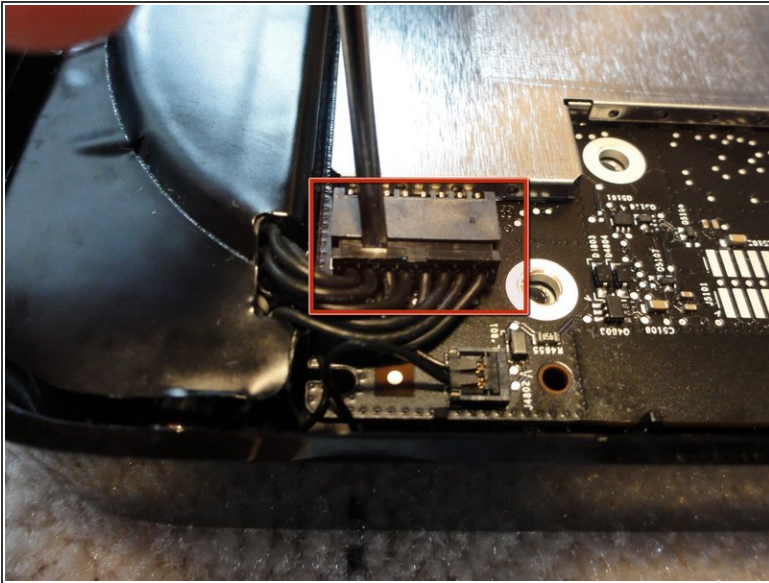
## Step 3



- Remove the pink thermal pad. (I already removed mine)
- Remove the five philips #1 screws securing the heatsink and logic board to the upper casing.

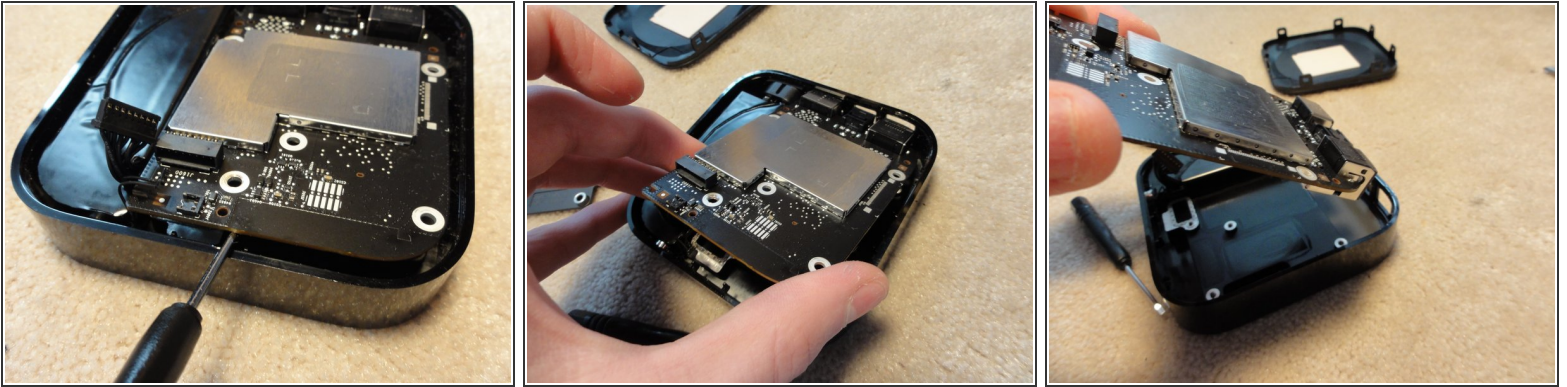


## Step 4



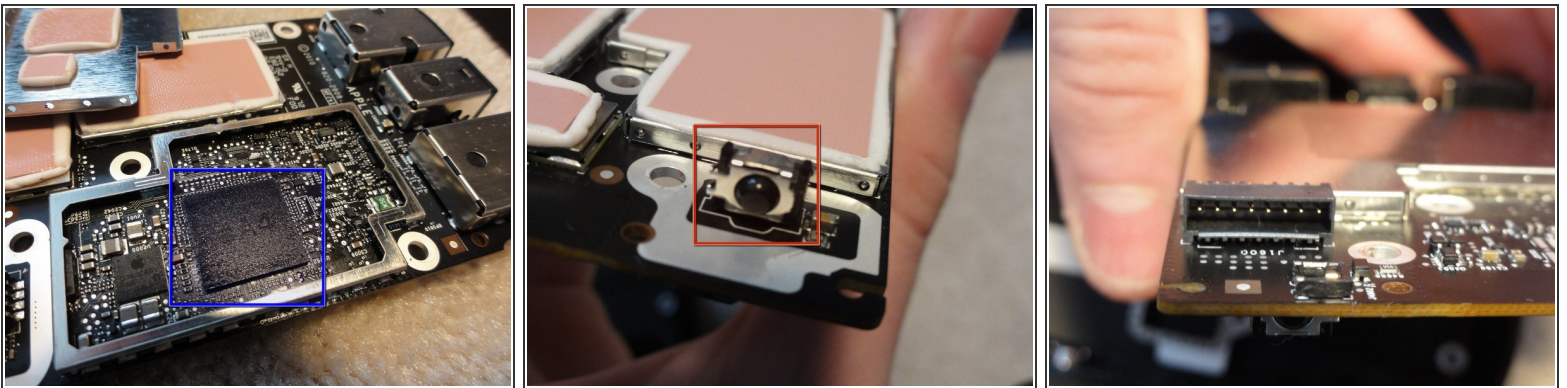
- Using a screwdriver (flathead) or a spudger, pull the power cable out of the logic board
- ⚠ Now with a spudger or flathead screw driver, CAREFULLY remove the LED connector. Do this very carefully as this connector is extreme fragile, and easily damaged.

## Step 5



- Use a flathead screwdriver or spudger to tilt the logic board to an angle so you can grab it with your hands
- Holding the logic board by its edges, lift it up slightly.
- And remove
- That's all. The logic board has been removed. Just follow the steps (Step 1-5 in reverse to install the board)

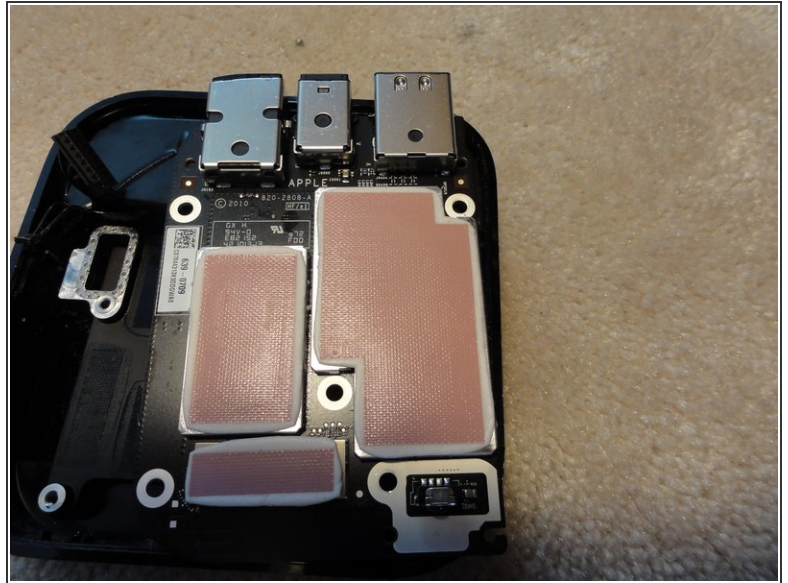
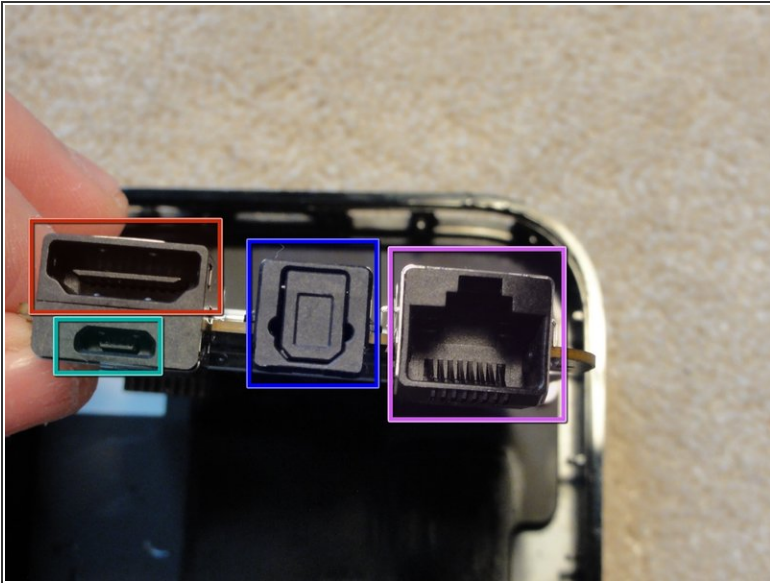
## Step 6



- The chip with the grease on is the Apple A4 chip. The thermal pad took the silkscreen off, so it's hard to read.
- The black ball surrounded by metal is the IR Remote sensor.
- In the third picture, the power connector and LED status connector are shown.



## Step 7



- HDMI Port
- Micro USB Port (used for diagnostics, and service)
- Digital TOS Link out (Optical Out)
- Gigabit Ethernet

**i** The second picture shows the thermal pads (pinkish white edge stuff) this keeps the components of the logic board cool and happy.

To reassemble your device, follow these instructions in reverse order.