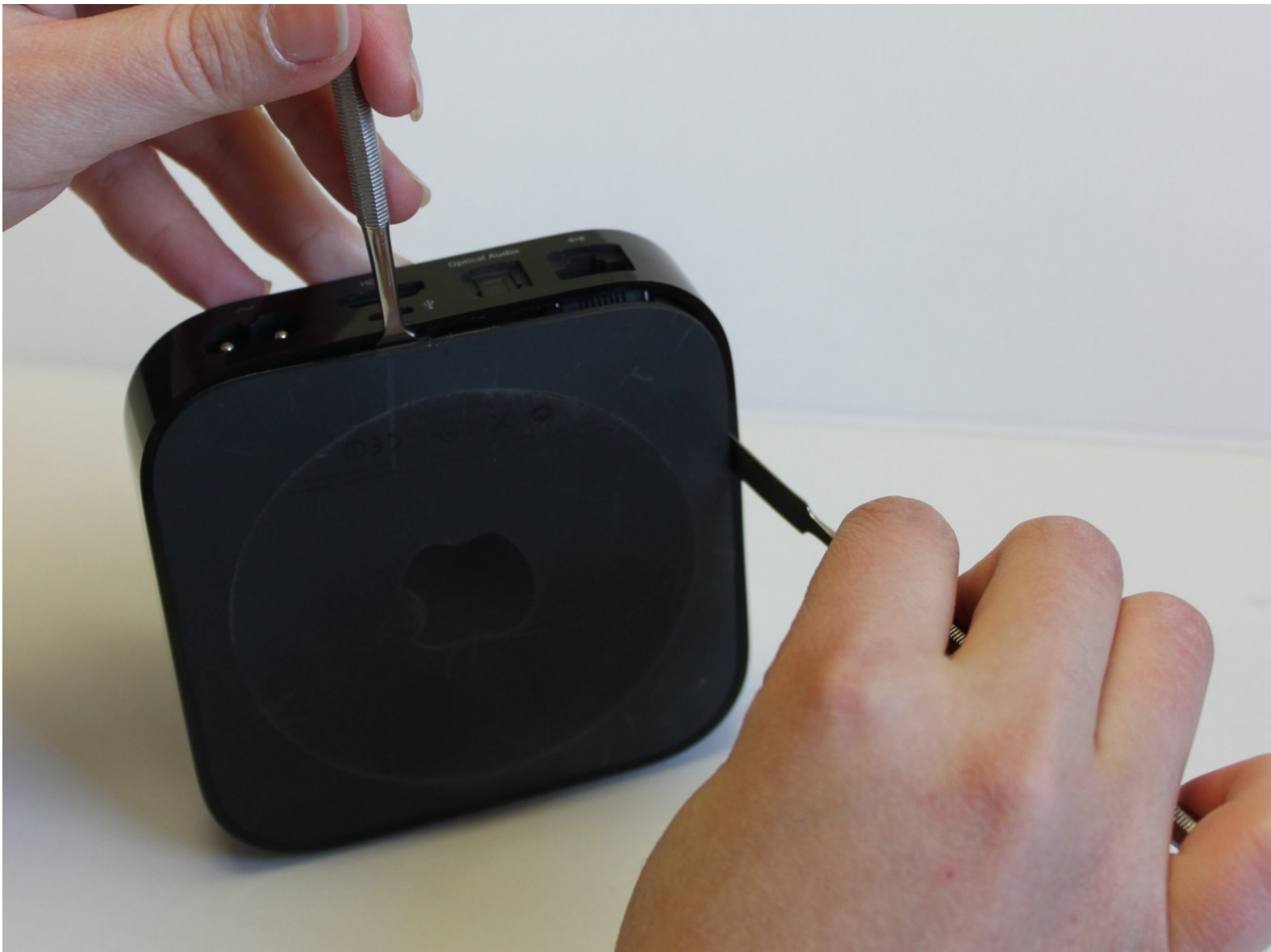




# Apple TV 2nd Generation Power Supply Replacement

When it comes to electronics, the power supply can eventually fail over time. This guide will show how to replace an old or damaged Apple TV power supply.

Written By: Deanna Rice



This document was generated on 2019-09-23 10:47:25 AM (MST).

---

## INTRODUCTION

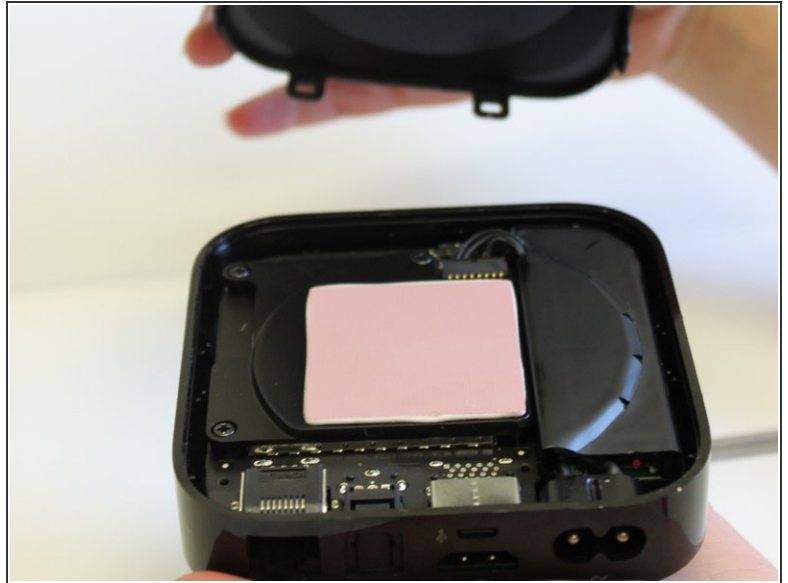
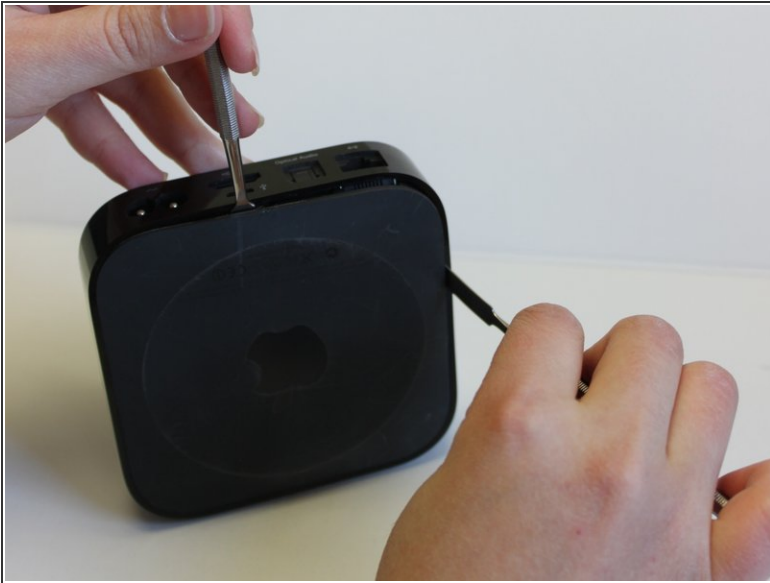
When it comes to electronics, the power supply can eventually fail over time. This guide will show how to replace an old or damaged Apple TV power supply.

---

### TOOLS:

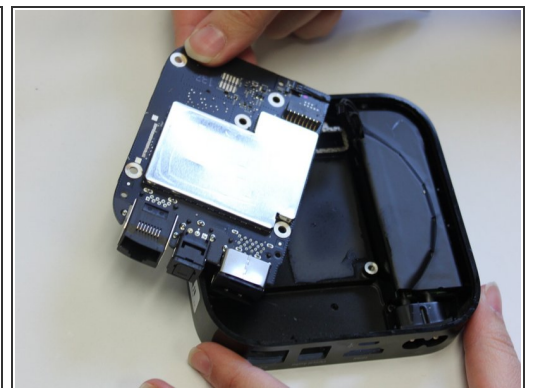
- [Metal Spudger](#) (2)
  - [Phillips #1 Screwdriver](#) (1)
  - [Tweezers](#) (1)
  - [Spudger](#) (1)
-


## Step 1 — Power Supply



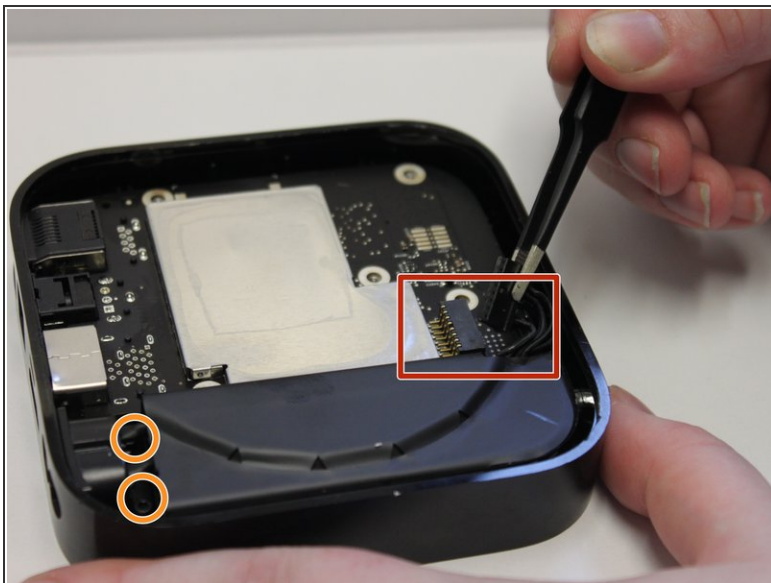
- As the Apple TV doesn't have any visible screws or point of entry, the first step is to use a couple of [metal spudgers](#) to carefully loosen and remove the rubber base from the upper case.
- Upon opening the Apple TV, the most noticeable and largest parts will be the heat sink and power supply.

## Step 2



- Using a [#1 Phillips screwdriver](#), remove the screws holding the heat sink in place.
-  Remember, there are also screws hidden underneath the thermal pad.
- Next, use a [metal spudger](#) to gently pry the logic board up and out of the device. This will allow easier access to the power supply.

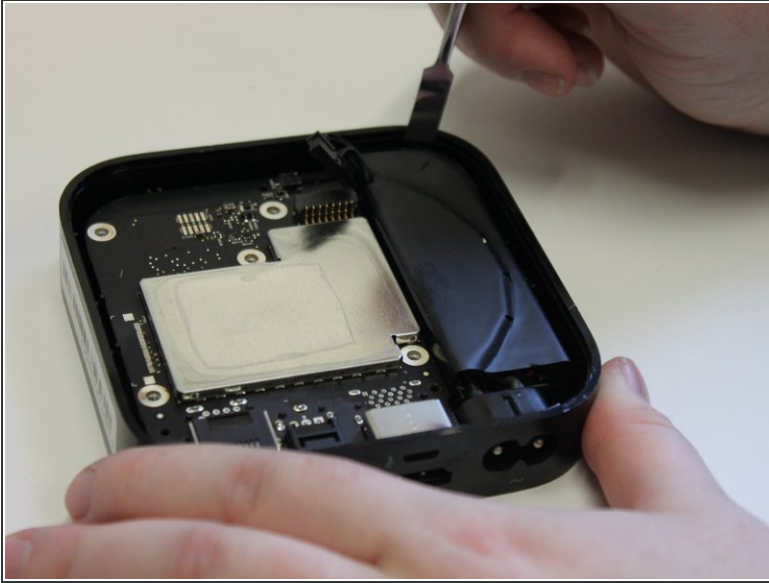
### Step 3



- The power supply is attached at three different points: the logic board/power supply connector, two screws and a heavy piece of tape, located underneath the power supply.
- Locate the connector attaching the power supply to the logic board. Using a pair of [tweezers](#), gently remove the connector from the power supply.
- Using a [#1 Phillips screwdriver](#), remove the two screws located toward the front of the device.



## Step 4



- Using a nylon spudger around the edge, gently work the power supply up and out of the case.
- Place the replacement power supply in the now empty spot.

To reassemble your device, follow these instructions in reverse order.