



Apple TV 4th Generation Power Supply/Heatsink Replacement

How to remove the power supply/heatsink of the Apple TV so it may be replaced.

Written By: Lisa Kelley



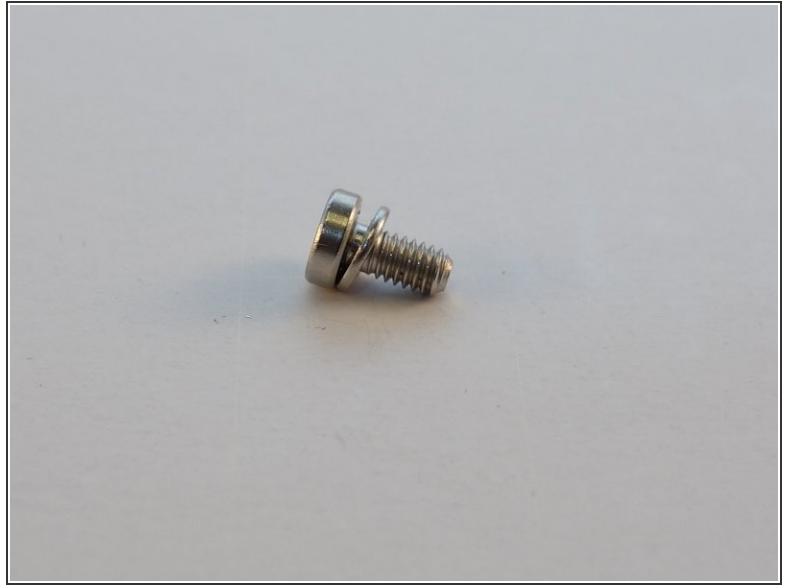
INTRODUCTION

This guide will show you how to remove the power supply/heatsink of the Apple TV so it may be replaced.

TOOLS:

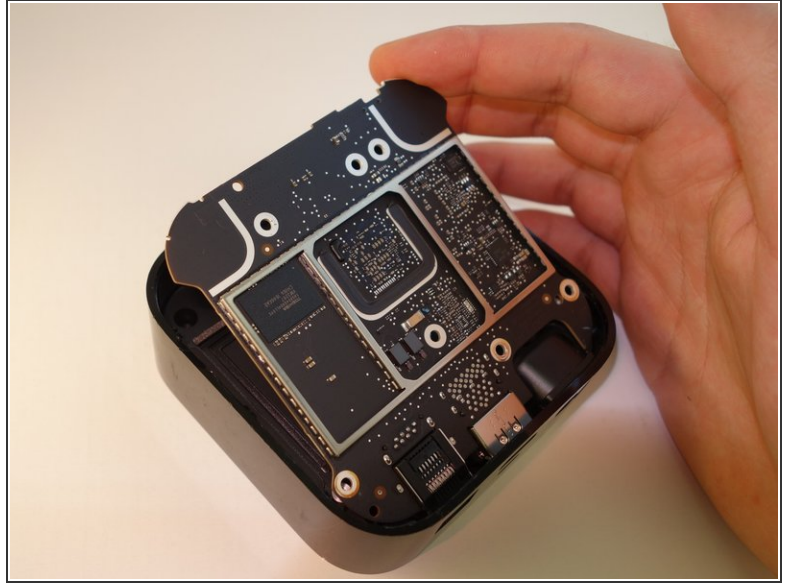
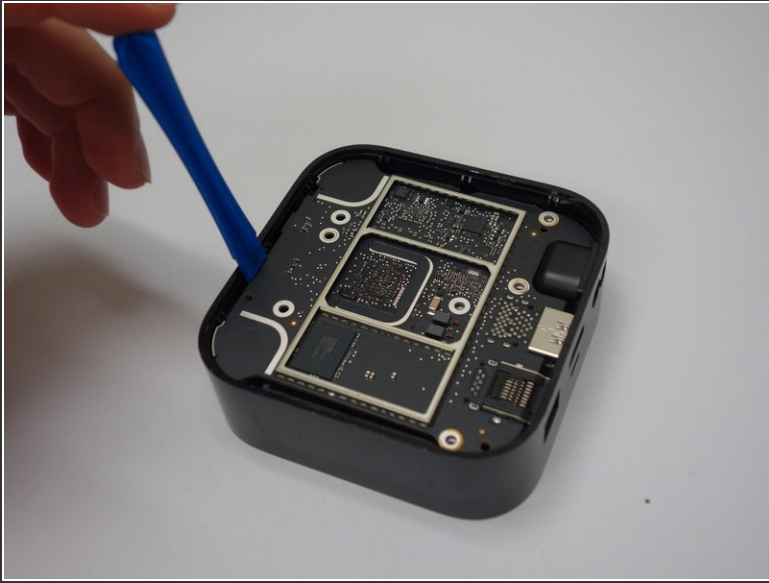
- [iFixit Opening Tools](#) (1)
 - [T7 Torx Screwdriver](#) (1)
 - [T6 Torx Screwdriver](#) (1)
 - [Screw Extracting Pliers](#) (1)
 - [Tweezers](#) (1)
-

Step 1 — Logic Board



- Remove the 4mm T7 Torx screw.
- Remove the 5mm T7 Torx screw and its accompanying washer.
- ⓘ The silver screw is accompanied by a washer that is easily lost.

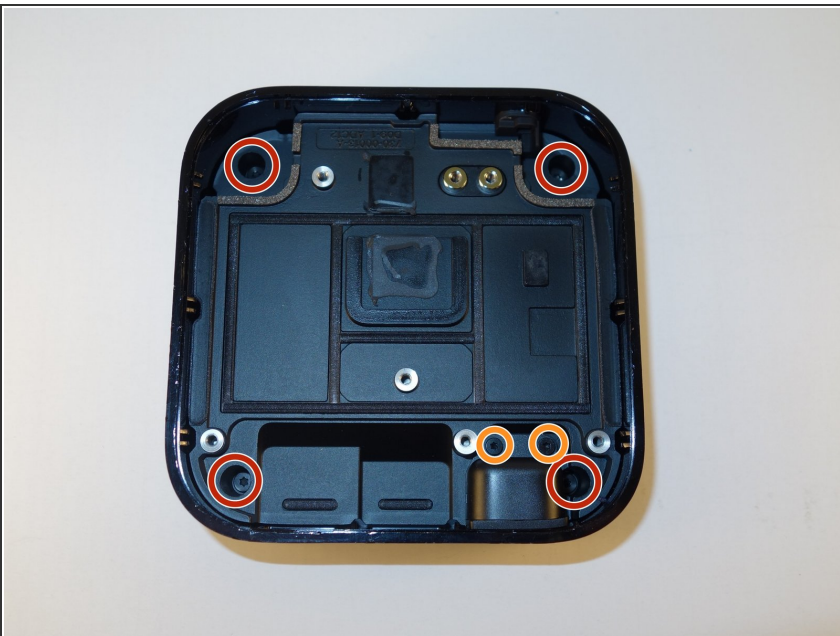
Step 2



- Use the plastic opening tool to tip the board upward.

⚠ Avoid disturbing the square of gray thermal paste centered on top of the power supply/heatsink during removal.

Step 3 — Power Supply/Heatsink



- Remove the four (4) 4mm T7 Torx screws anchoring the power supply to the case.
- Remove the two (2) 4mm T6 Torx screws holding the power supply plug.
- ⚠ Avoid disturbing the square of gray thermal paste centered on top of the power supply/heatsink.

Step 4



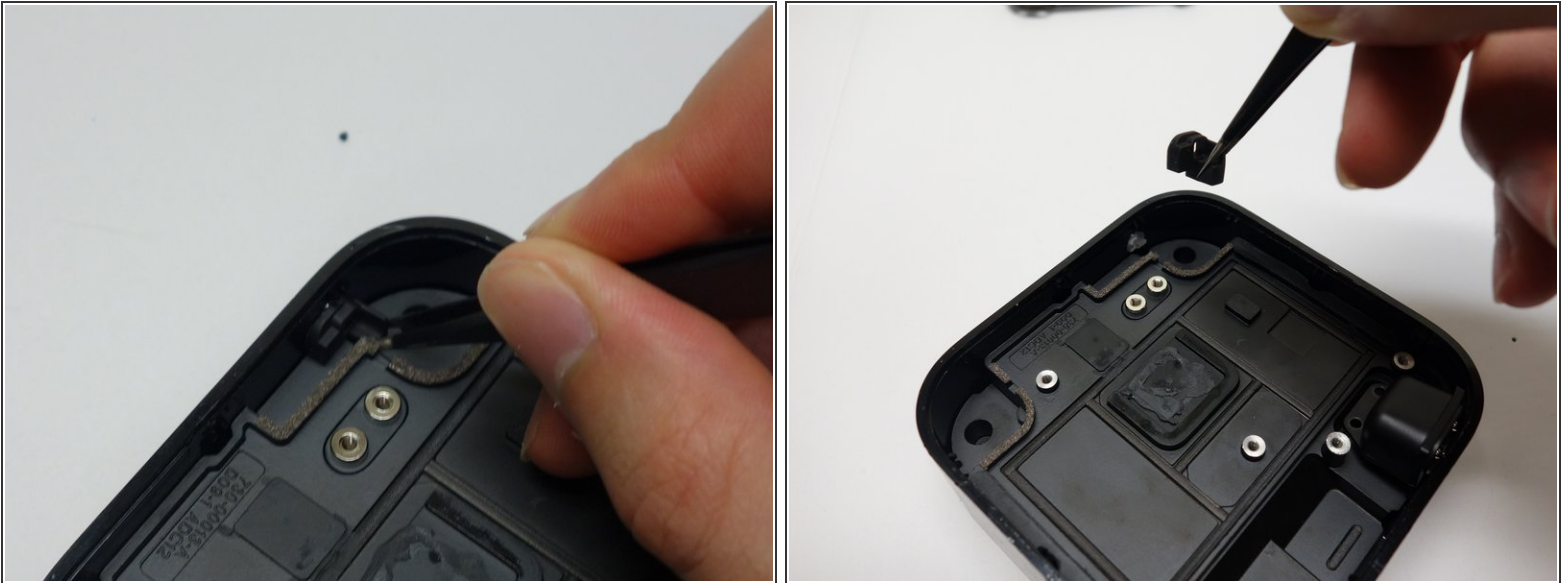
- Pull the power port away from the side of the casing.

Step 5



- Dislodge the rubber power indicator light cowling's adhesive with a fingernail.

Step 6



- Extract the rubber power indicator light cowling with tweezers by first pulling the cowling directly away from the case wall, until it clears the clear plastic nub of the diffuser, and then upwards.

i The adhesive will still be sticky for reassembly.

Step 7



- Insert two of your 7mm T7 Torx screws into the indicated posts on the power supply/heatsink.
- Using screw removal pliers, pull up on the screws, alternating between them, until the unit is free from the case.

i The fit between the case and the power supply/heatsink is very tight. However, the power supply should fall freely into place on reassembly.

To reassemble your device, follow these instructions in reverse order.