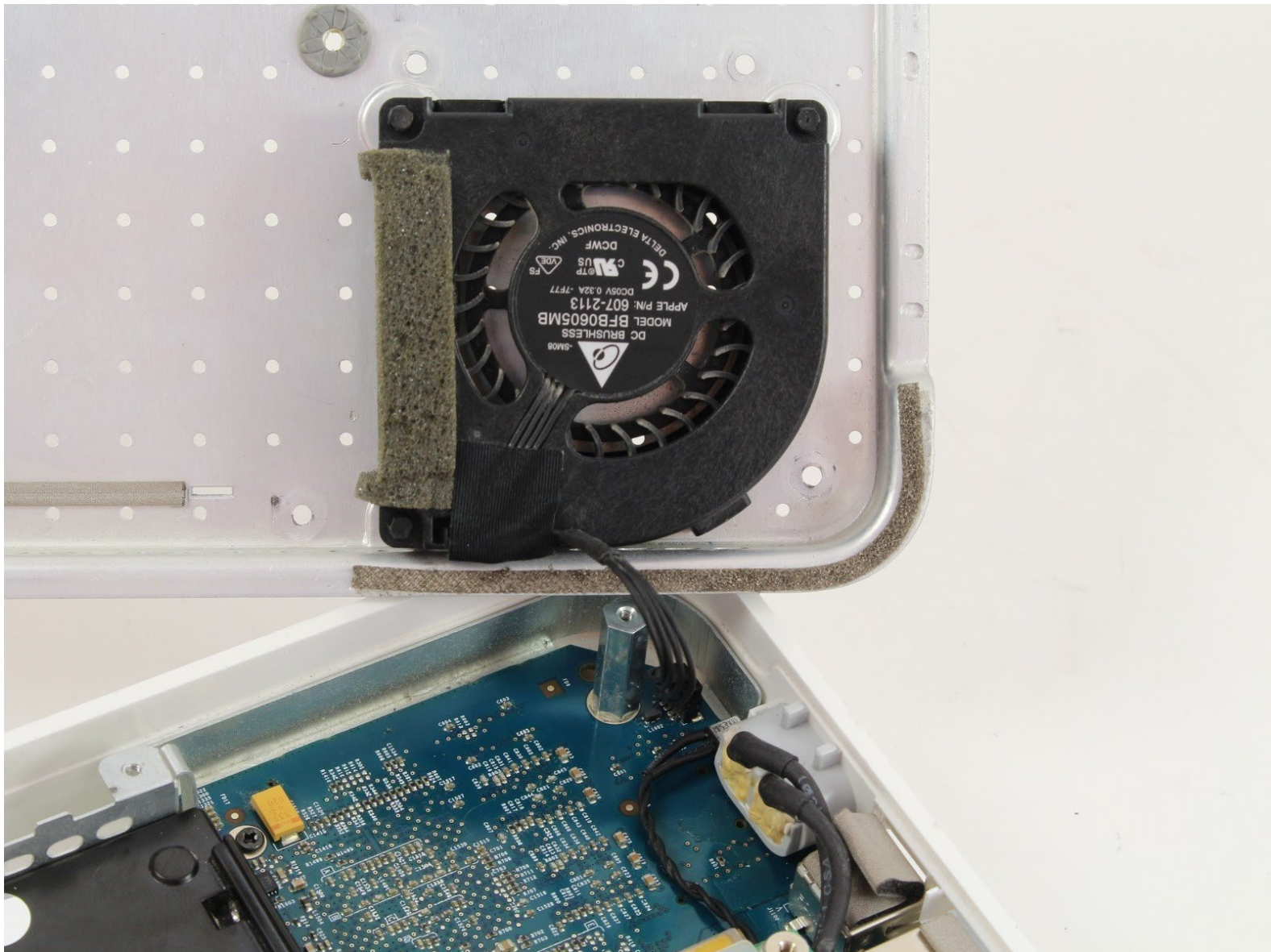




# Apple Time Capsule Model A1254 Fan Replacement

In this guide we will be replacing the fan in the Apple Time Capsule.

Written By: JR Alfano



---

## INTRODUCTION

The fan regulates air flow to the Time Capsule allowing the internal components to maintain optimal temperature. If the fan has failed, it is very easy to replace and needs very little tools.

---

### TOOLS:

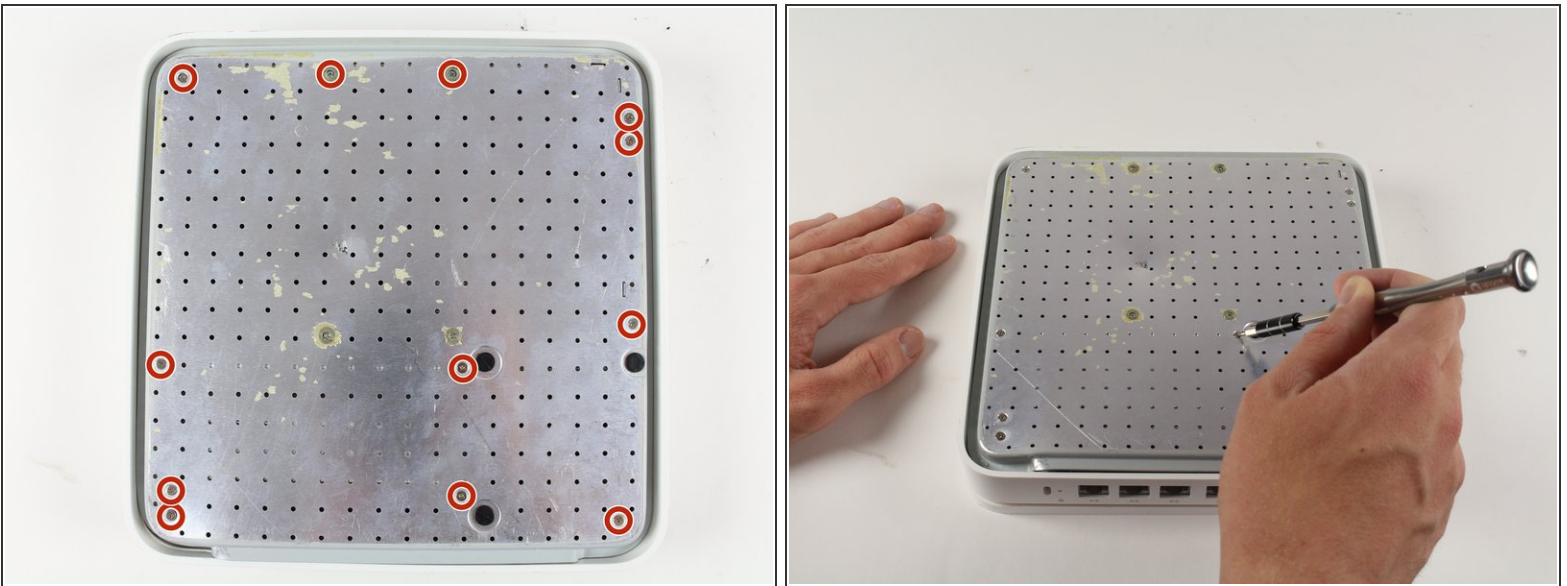
- [Phillips #0 Screwdriver](#) (1)
  - [Phillips #00 Screwdriver](#) (1)
  - [Metal Spudger](#) (1)
-

## Step 1 — Back Plate



- Turn the device upside down to reveal the rubber section of the back plate. Using a metal spudger, carefully wedge the blunt tip into the space between the aluminum back plate and the rubber, separating the two pieces.
  - ⓘ This may take a few minutes to pry the rubber off completely. Once you are able to get a grip on the rubber it is easier to peel it off using your hands.
  - ⓘ Don't worry about re-applying adhesive to the rubber; the remaining adhesive has plenty of strength to affix itself to the aluminum.

## Step 2

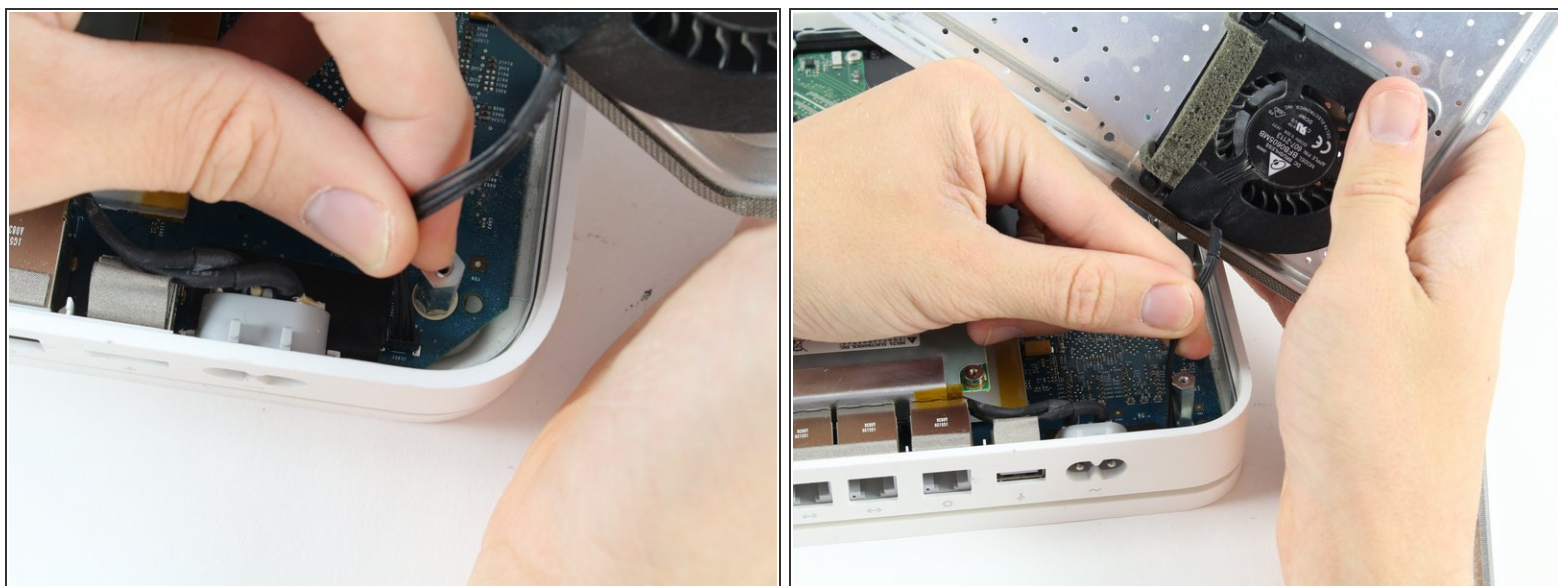


- Remove the ten 3mm screws with a Phillips #00 screwdriver.
  - ⓘ The screws with adhesive covering **do not** need to be removed.

This document was generated on 2019-10-30 02:52:05 PM (MST).

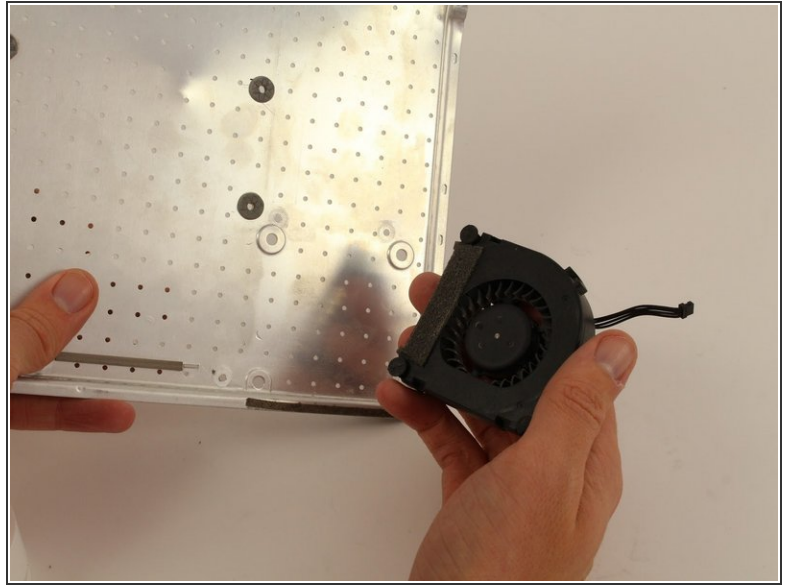
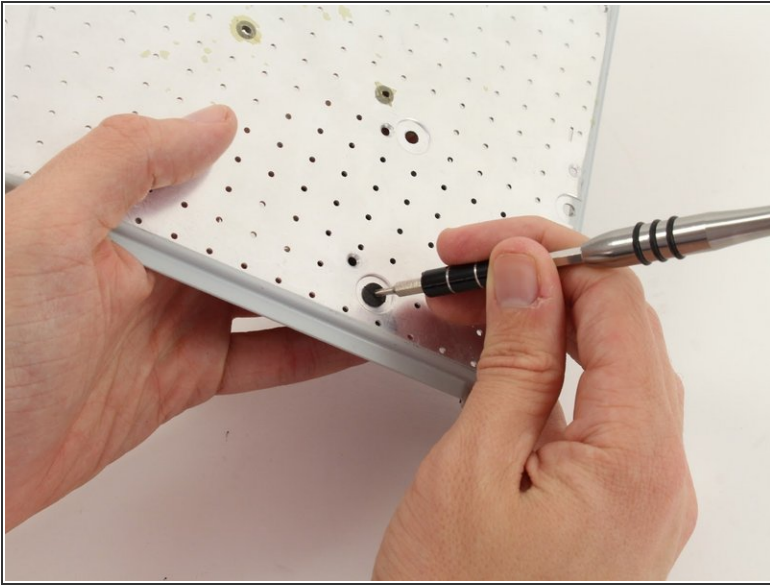


## Step 3



- The fan affixed to the back plate is connected to the logic board. A small wire must be detached to fully remove the back plate.
- Pull the base of the wire close to the logic board and the connector will pop off.

## Step 4 — Fan



- Orientate the back plate so that the fan is facing away from you.
- Use the #0 Phillips Screw Drive to push the rubber shock mounts through the back plate.
  - ⚠ Make sure that the head of the screw driver is centered on the head of the rubber shock mount so that it doesn't slip off causing possible injury.
- ☑ When attaching the new fan, push the new rubber shock mounts through the back plate first. Attach the fan once all mounts are inserted.

To reassemble your device, follow these instructions in reverse order.