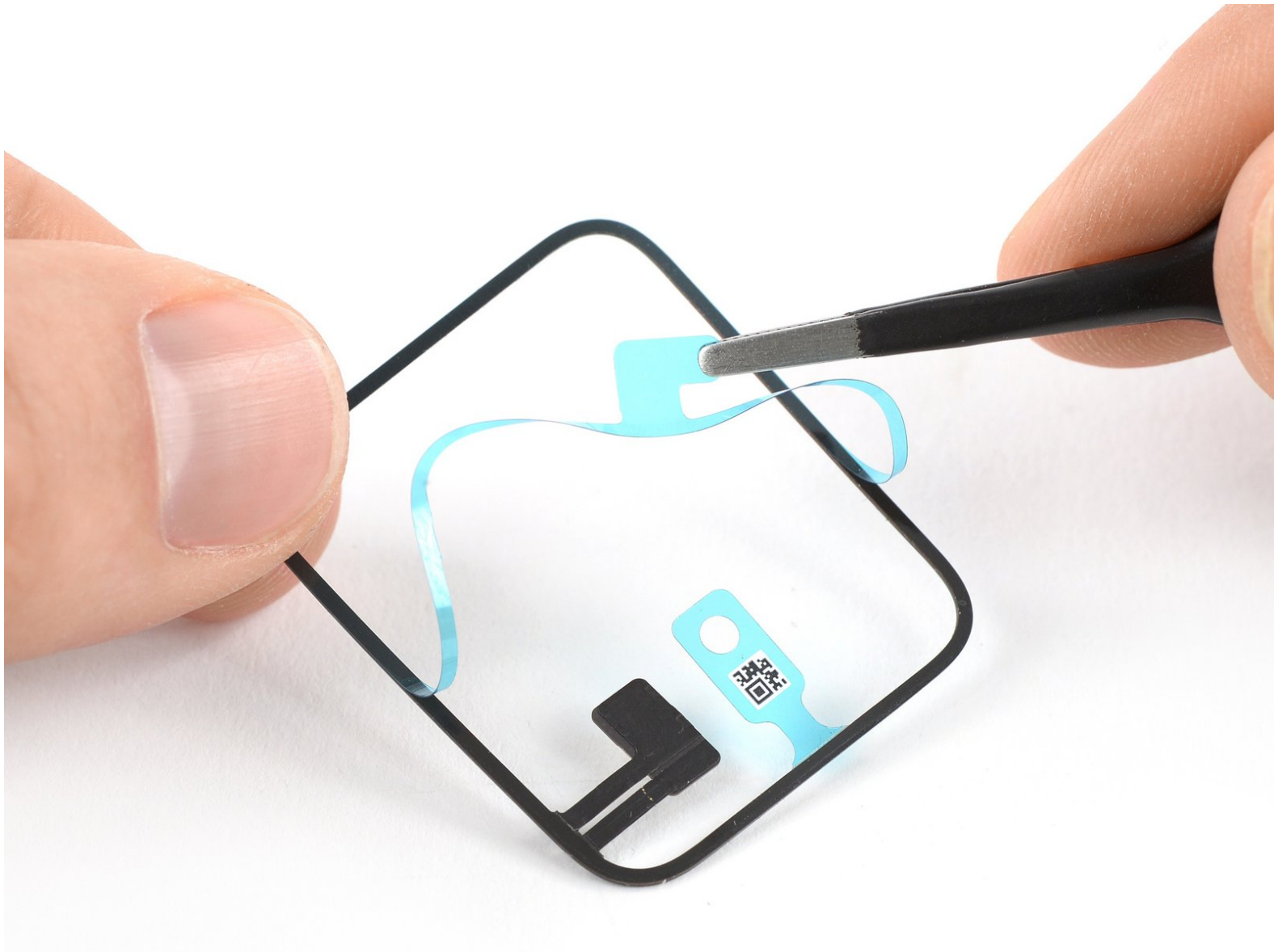




Apple Watch Series 2 Force Touch Gasket Replacement

This guide shows how to replace the Force Touch gasket in your Apple Watch Series 2.

Written By: Tobias Isakeit



INTRODUCTION

Use this guide to replace the Force Touch gasket in your Apple Watch Series 2. This guide shows the procedure while leaving the display connected. If you prefer to disconnect the display or are replacing the display anyway, please refer to [this guide](#) and replace the Force Touch gasket after removing the display.

If your Force Touch function works correctly and you just need new adhesive to re-seal your watch, follow the [adhesive replacement guide](#) instead.



TOOLS:

- [Tri-point Y000 Screwdriver Bit](#) (1)
- [iOpener](#) (1)
- [Curved Razor Blade](#) (1)
- [iFixit Opening Tools](#) (1)
- [iFixit Opening Picks set of 6](#) (1)
- [Tweezers](#) (1)
- [Spudger](#) (1)



PARTS:

- [Apple Watch \(42 mm Series 2\) Force Touch Sensor Gasket](#) (1)
- [Apple Watch \(38 mm Series 2\) Force Touch Sensor Gasket](#) (1)

Step 1 — Power off your Apple Watch



- Before starting repairs, take your watch off the charger and power it down.
 - ❗ If your touchscreen is broken and prevents powering off the watch, [use this alternate method to power it down](#).

Step 2 — Apply heat



- [Prepare an iOpener](#) (or grab a hair dryer or heat gun) and heat the face of the watch until it's slightly too hot to touch.
- Leave the iOpener on the watch for at least a minute to fully heat the screen and soften the adhesive holding it to the case.

- ① You may need to reheat the iOpener, or move it around on the screen as sections cool, to heat the screen enough to pry it off.

Step 3 — Observe all warnings



- ① Because the gap between the screen and watch body is so thin, a sharp blade is needed to separate the two. **Read the following warnings carefully before proceeding.**
 - ⚠ **Protect your fingers** by keeping them completely clear of the knife. If in doubt, protect your free hand with a heavy glove, such as a leather shop glove or gardening glove.
 - ⚠ Be careful **not to apply too much pressure**, as this might cause the knife to slip and cut you, or damage the watch.
 - ⚠ **Wear [eye protection](#).** The knife or glass may break, sending pieces flying.
- ① Feel free to attach or remove the watch band as needed to provide more control as you make repairs.

Step 4 — Pry up the screen




- Place the edge of a curved blade into the thin gap between the display and the outer case. Start at the short side of the display, closest to the digital crown.
 - Press firmly *straight down* into the gap.
 - Once inserted, tilt the blade to pry the display open slightly.
- ⚠ Do not insert the knife more than 1/16th of an inch (~2 mm).

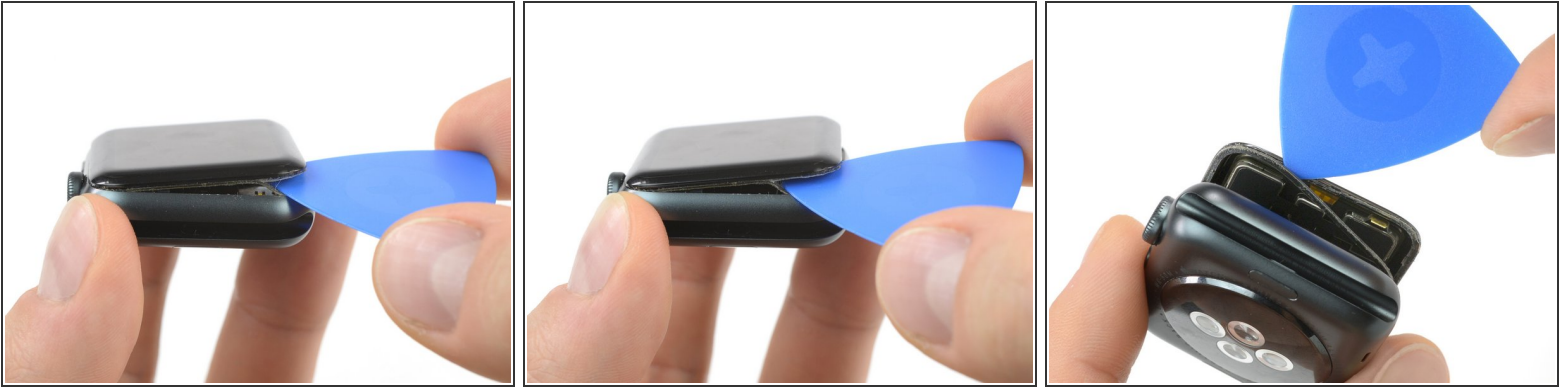
Step 5



- Once you've opened a small gap with the curved blade, remove the blade and insert the thinner edge of an opening tool into the gap.
- Push the opening tool into the gap, using your thumb as a pivot to lift the display open a bit farther.

 Don't try to fully open or detach the display yet.


Step 6



- Insert an opening pick under the display and carefully separate the Force Touch gasket from the display.
 - ⓘ iFixit screen and battery repair kits include a replacement Force Touch gasket, so don't fret too much if yours is damaged.
 - ⚠ Otherwise, to preserve the Force Touch gasket, pry carefully under the edge of the display. If the Force Touch gasket splits when lifting the display, or if you separate the gasket layers, you'll also need to replace the Force Touch gasket itself.
- Slide the pick around the display to separate the adhesive between the Force Touch gasket and the display.
 - ⚠ Don't insert the opening pick deeper than 1/16th of an inch (~2 mm).

Step 7



 To avoid straining the display cables, don't open the display all the way yet.

- Open the display to about a 45° angle, and use tweezers to peel off the adhesive between the display and the Force Touch gasket.
- Thread the adhesive around and behind the display cables to get it off completely.

Step 8 — Battery Disconnection



- Use a Y000 driver to remove the Tri-point screw securing the metal battery connector cover.
- Remove the cover.

Step 9



- Disconnect the battery by prying its connector straight up with the edge of a pry tool.
- Bend the connector up slightly to make sure it does not make contact by accident.

Step 10 — Force Touch Gasket



- Use the tip of a pry tool to disconnect the Force Touch gasket by prying it straight up from the outside edge.
- ❗ The connector you unplug actually leads to the motherboard. The socket underneath that connector lies on the Force Touch gasket itself.

Step 11



- Lift up the connector plate of the Force Touch gasket.
- Slide your tweezers or a pry tool underneath the gasket to separate the glue underneath.
- Separate the glue all around the perimeter of the watch **except** the edge where the display cables lie, to avoid ripping them by accident.

Step 12



- Carefully pull the Force Touch gasket over and around the display.
 - ☑ If the display is already detached because you're replacing it, it's easier to leave the new display disconnected for now. Connect the display after the Force Touch gasket is replaced (five steps down).
- Flip the display almost shut so that you can safely peel the Force Touch gasket from the remaining edge.
- Remove the Force Touch gasket.

Step 13 — Cleaning the case



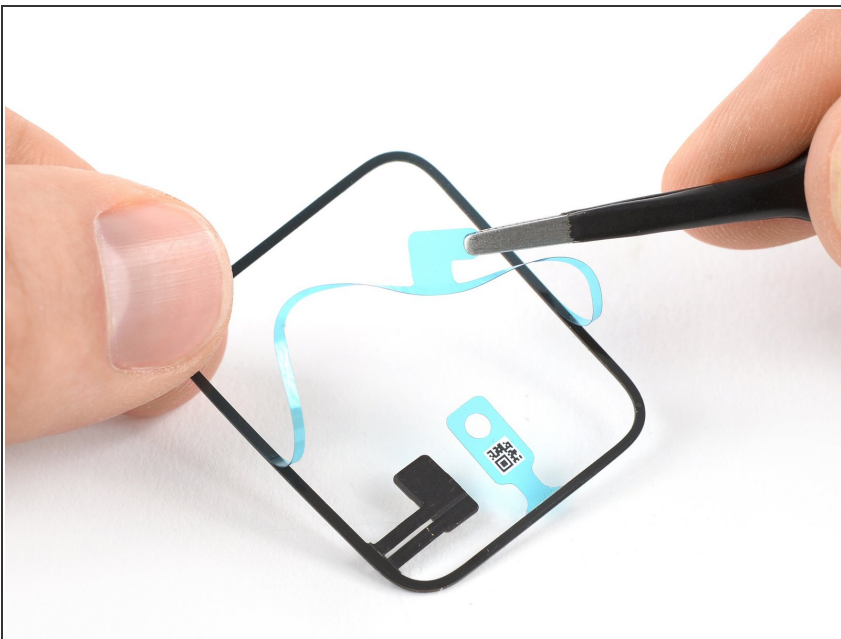
- Apply a little bit of isopropyl alcohol (>90%) to a Q-tip or use a [cleaning pad](#) to gently remove any remaining adhesive from the former force touch gasket.
- ⓘ To remove the adhesive on the side under the display cables, hold the display nearly closed and pull it gently away from the edge while you clean it.

Step 14 — Cleaning the display



- Flip the watch upside-down so the display lays flat while slightly lifting up the case.
- Carefully remove any remaining adhesive from the back of the display.

Step 15 — Installing the new gasket



- Use a pair of tweezers to carefully remove the protective liner from the bottom of your new Force Touch gasket, exposing the adhesive underneath.
- ⓘ Make sure the gasket is oriented with the connector pins facing away from you, or you'll remove the liner from the wrong side.

Step 16



- Hold the Force Touch gasket diagonally to thread it over the display.
- Slightly tilt the display forward so you can align the Force Touch gasket with the frame.
- Starting on the corner opposite the Force Touch gasket connector, set the gasket onto the frame, and press it down.

Step 17



- Use a pry tool to fold the connector plate of the Force Touch gasket down into its recess.
- Reconnect the flex cable by pressing it down gently.

Step 18



 Make sure your display is connected before you reconnect the battery.

- Use the point of a spudger to bend the battery connector back into its original position.
- Gently press down to reconnect the battery flex cable.

Step 19



- Use a pair of tweezers to place the metal plate covering the battery connector back in its original position.
- Install the Tri-point #000 screw.
- ☞ At this point you might want to turn on the watch and check if everything is working, before sealing it shut.

Step 20



- Use a pair of tweezers to gently remove the protective film on top of the Force Touch gasket.

Step 21



- Align the display and press it down firmly onto the adhesive.
 - ☑ To improve bonding of the adhesive you can use an iOpener to warm up the display. Then apply some pressure for a few hours (placing it under one or two heavy books overnight might be a way).

Take your e-waste to an [R2 or e-Stewards certified recycler](#).

Repair didn't go as planned? Try some [basic troubleshooting](#), or search our Answers forum for help.