



Apple iPod Hi-Fi Front Panel and Speaker Connections Replacement

How to replace the Apple iPod Hi-Fi front panel and speaker connections.

Written By: Tanner McCormack



INTRODUCTION

This guide details how to replace the front panel and speaker connections of the Apple iPod Hi-Fi speaker system.

While following this guide, be sure to be careful of the protective wrapping around the interior components because the wrapping is made of small fibers that can make a large mess.

TOOLS:

- [Hair Dryer](#) (1)
 - [Metal Spudger Set](#) (1)
 - [JIS #1](#) (1)
-

Step 1 — Grille



- Warm up the glue by using the hair dryer on the grille for 5-10 minutes.
- ⓘ You can skip this step if you don't have access to a hair dryer. However, if you skip this step, the next step will take longer and will be harder.

Step 2



- Take one spudger and fit it under the grille.
 - Use your first spudger to pry up and make room to insert a second one.
 - Sever the glue connections between the grille and the device by moving one spudger around, cutting through the glue.
 - Use the other spudger to raise the grille, allowing you to see where you're working.
- ★ Since you're cutting the glue, the grille may not stick as well when reassembled.

Step 3



- Pull the grille off the Apple iPod Hi-Fi with your hands.

Step 4 — Front Panel and Speaker Connections



- Remove all eight 3.3mm JIS #1 screws holding the front panel in place by placing the screwdriver in the head of the screw and rotating counterclockwise.
- Remove the four 3.3mm JIS #1 screws holding the large speaker in place by placing the screwdriver in the head of the screw and rotating counterclockwise.

Step 5



- Pry out the large speaker with a metal spudger around the edge.
- Remove the speaker slowly from its socket with your hands.
- ⓘ Turning the speaker on its side will make this step much easier.
- ⓘ The speaker is still attached by several connections at this point so the speaker will not be able to be removed completely at this step.

Step 6



- Press down on the tab and pull out with your hands to remove the cable connecting the large speaker from the rest of the unit.
- Pull the large speaker completely out and set aside.

Step 7



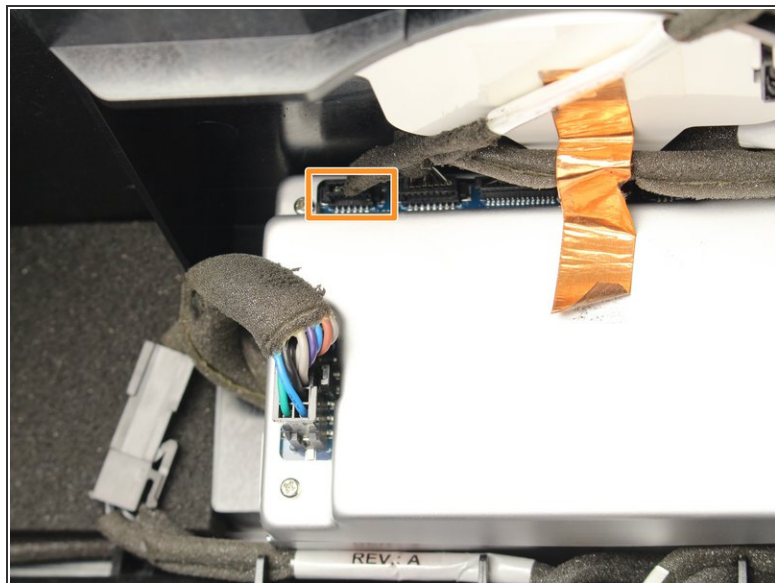
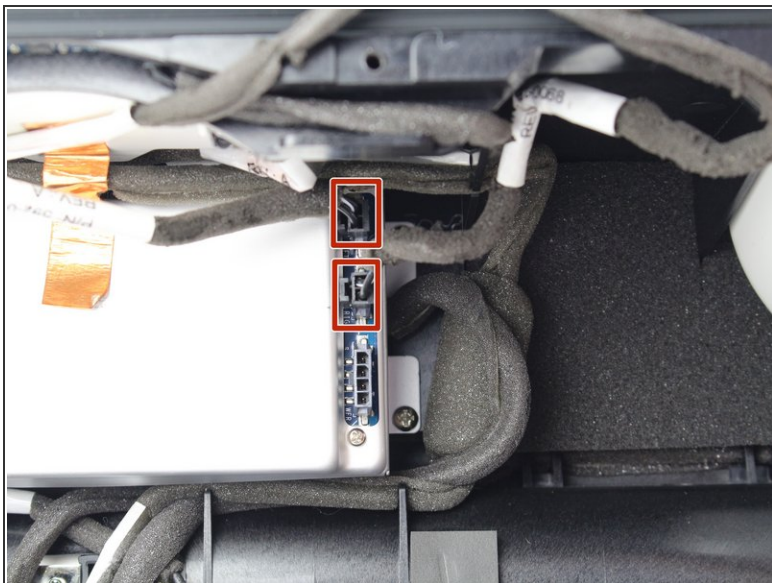
- Remove the sensor connection by pulling it straight out with your hand.

Step 8



- Pull the entire front assembly off by prying it up with the spudger and lifting the assembly off with your hands towards the top of the Hi-Fi.
- ⓘ There are still connections attached at this stage so the front assembly will not completely disconnect from the rest of the device .

Step 9



- Remove the clips for the remaining two speakers by repeating step 6.
 - Remove the last connection that connects the speakers to the power box.
 - Remove the front panel completely.
- ☒ When reassembling, the ports are labeled "right" and "left" to help you plug in the right speaker to the right port.

To reassemble your device, follow these instructions in reverse order.