



Apple iPod Hi-Fi Power Supply Replacement

How to replace the power supply of the Apple iPod Hi-Fi speaker system.

Written By: Tanner McCormack



INTRODUCTION

This guide details how to replace the power supply of the Apple iPod Hi-Fi speaker system.



TOOLS:

- [JIS #1](#) (1)
 - [Hair Dryer](#) (1)
 - [Metal Spudger Set](#) (1)
 - [Phillips #1 Screwdriver](#) (1)
-

Step 1 — Grille



- Warm up the glue by using the hair dryer on the grille for 5-10 minutes.
- ⓘ You can skip this step if you don't have access to a hair dryer. However, if you skip this step, the next step will take longer and will be harder.

Step 2



- Take one spudger and fit it under the grille.
 - Use your first spudger to pry up and make room to insert a second one.
 - Sever the glue connections between the grille and the device by moving one spudger around, cutting through the glue.
 - Use the other spudger to raise the grille, allowing you to see where you're working.
- ★ Since you're cutting the glue, the grille may not stick as well when reassembled.

Step 3



- Pull the grille off the Apple iPod Hi-Fi with your hands.

Step 4 — Front Panel and Speaker Connections



- Remove all eight 3.3mm JIS #1 screws holding the front panel in place by placing the screwdriver in the head of the screw and rotating counterclockwise.
- Remove the four 3.3mm JIS #1 screws holding the large speaker in place by placing the screwdriver in the head of the screw and rotating counterclockwise.

Step 5



- Pry out the large speaker with a metal spudger around the edge.
- Remove the speaker slowly from its socket with your hands.
- i** Turning the speaker on its side will make this step much easier.
- i** The speaker is still attached by several connections at this point so the speaker will not be able to be removed completely at this step.

Step 6



- Press down on the tab and pull out with your hands to remove the cable connecting the large speaker from the rest of the unit.
- Pull the large speaker completely out and set aside.

Step 7



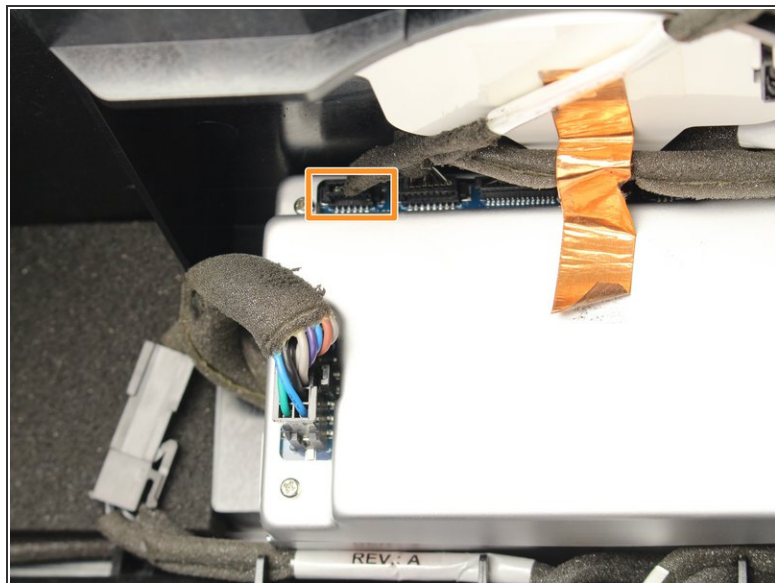
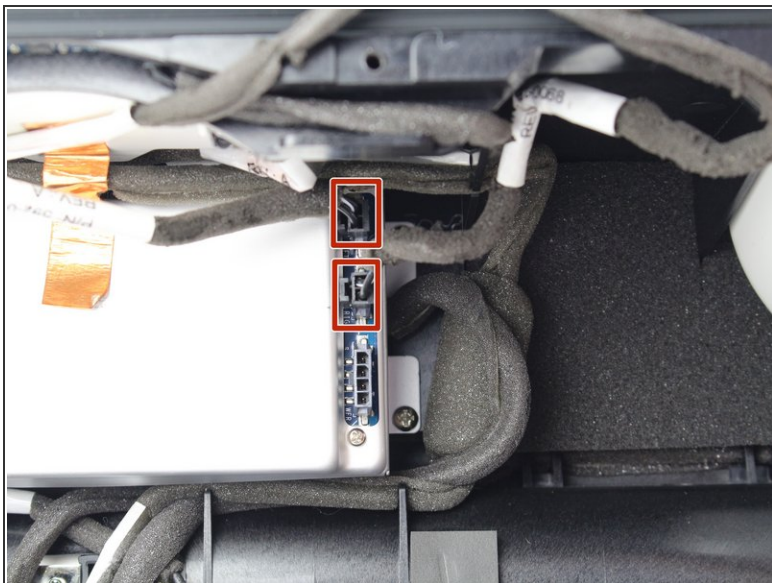
- Remove the sensor connection by pulling it straight out with your hand.

Step 8



- Pull the entire front assembly off by prying it up with the spudger and lifting the assembly off with your hands towards the top of the Hi-Fi.
- ⓘ There are still connections attached at this stage so the front assembly will not completely disconnect from the rest of the device .

Step 9



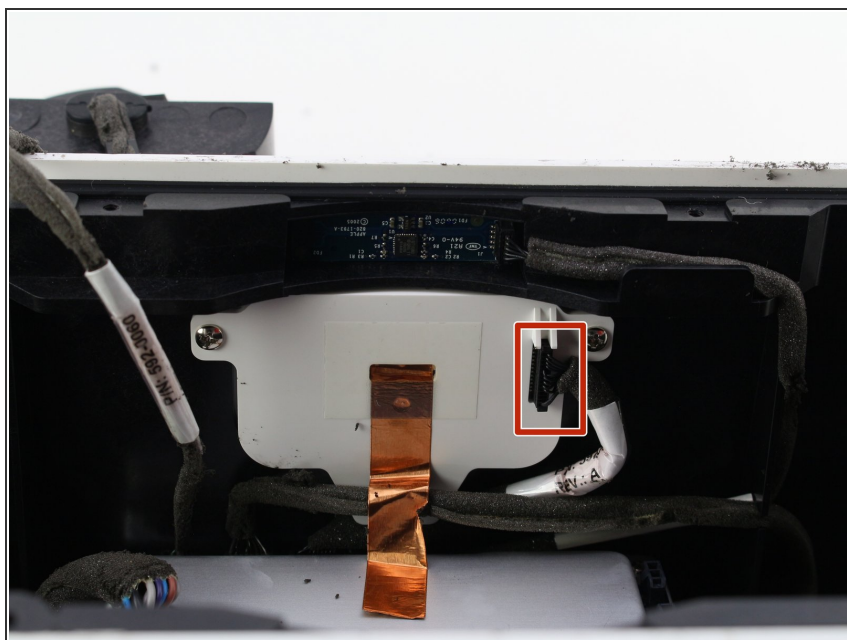
- Remove the clips for the remaining two speakers by repeating step 6.
 - Remove the last connection that connects the speakers to the power box.
 - Remove the front panel completely.
- ☒ When reassembling, the ports are labeled "right" and "left" to help you plug in the right speaker to the right port.

Step 10 — iPod Dock Inserts



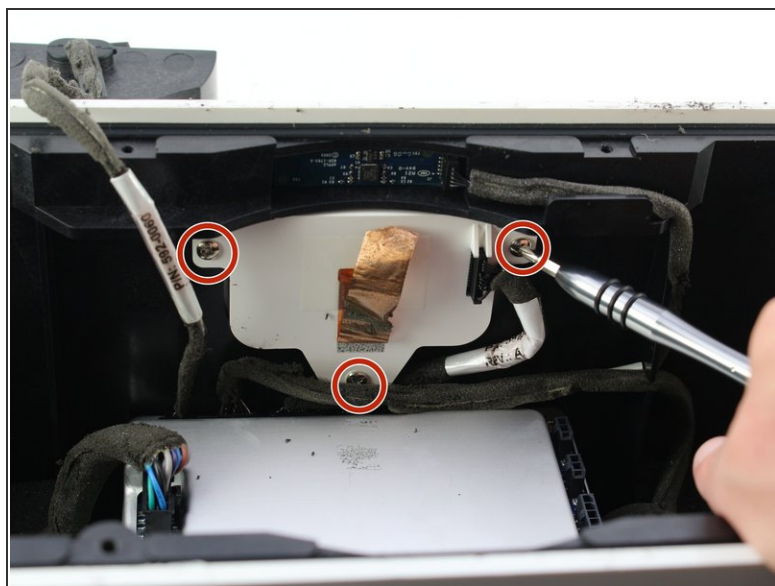
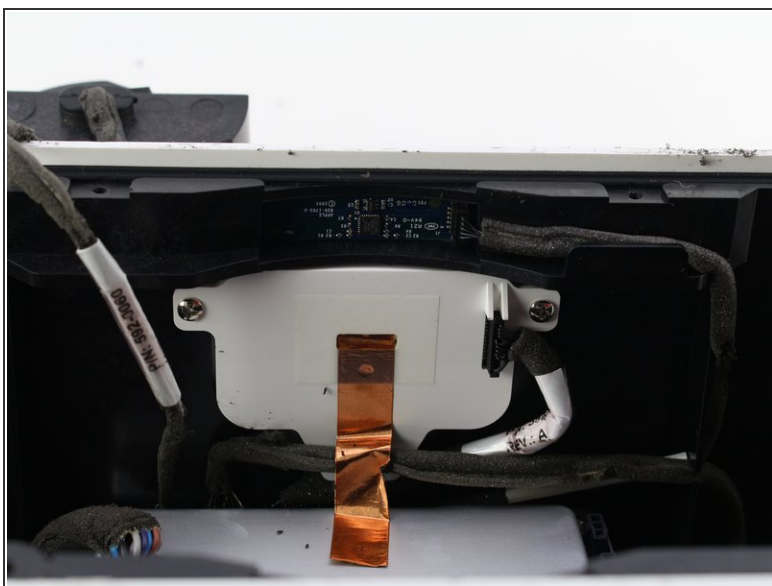
- Place the speaker on its back with the dock facing away from you.

Step 11



- Remove the cable connected to the dock insert by pulling the cable straight out.

Step 12



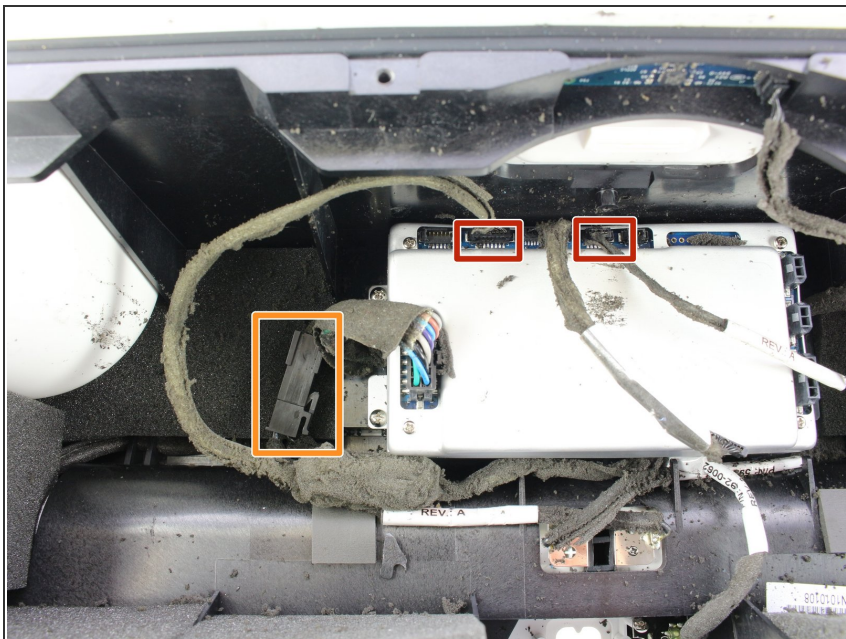
- Remove the gold tape attaching the insert to the unit.
- Remove the three 2mm Phillips #1 screws holding the dock inserts in by placing the screwdriver in the head of the screw and rotating counterclockwise.

Step 13



- Remove the dock insert with your hands.

Step 14 — Power Supply



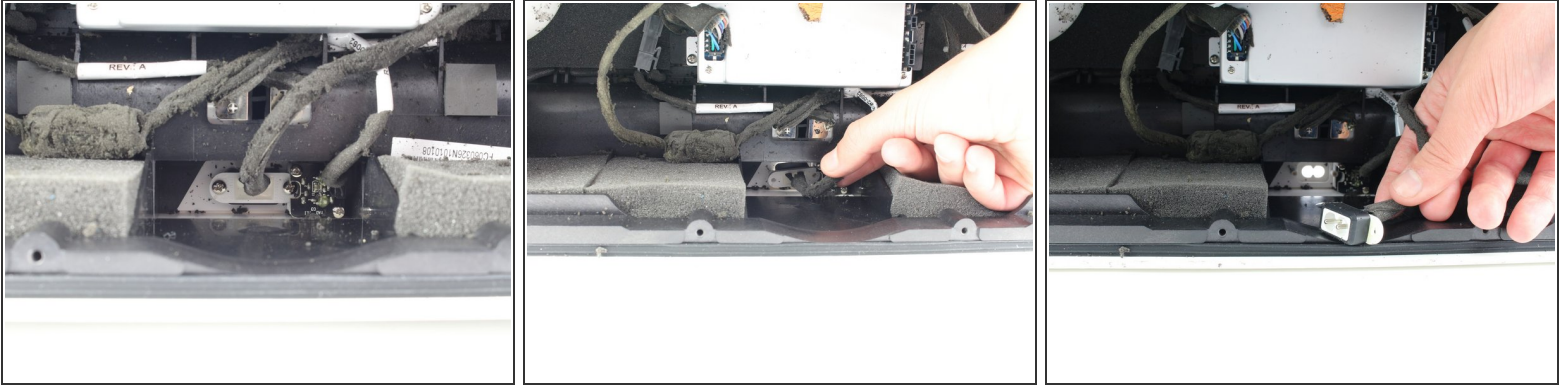
- Unplug the 2 cables on the top of the power supply box.
- Unclip the cables clipped together to the left of the power supply box.

Step 15



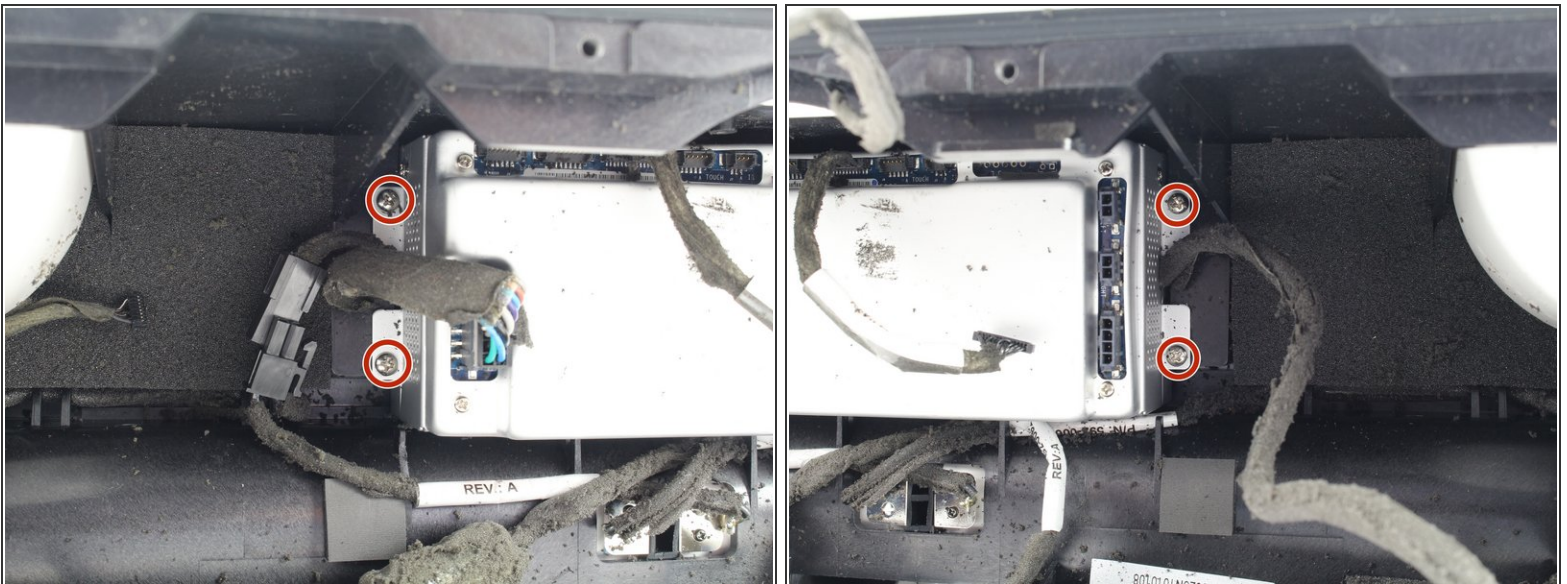
- Remove the middle foam panel from the wall of the device closest to you by pulling the foam out with your hand.

Step 16



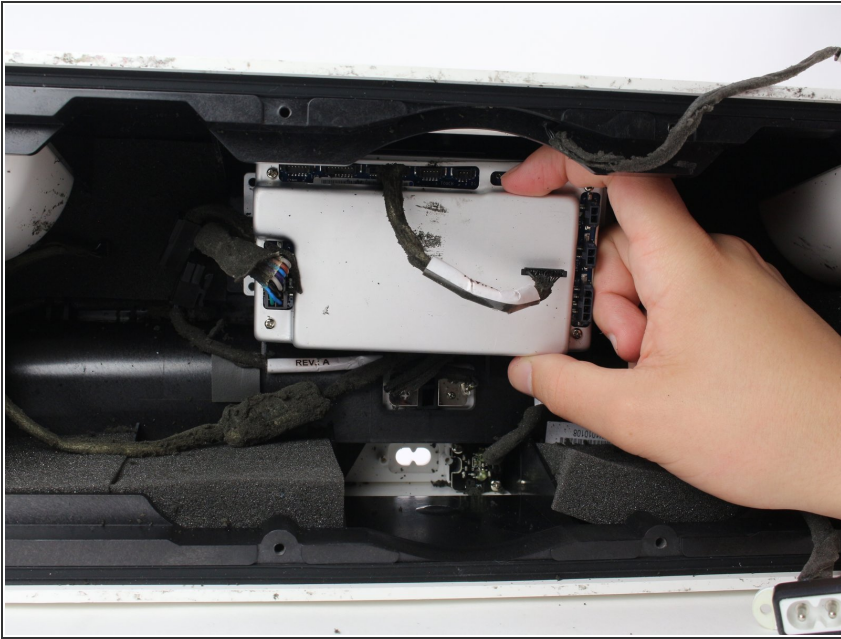
- Remove two 2mm Phillips #1 screws from the back power port by placing the screwdriver in the head of the screw and rotating counterclockwise.
- Pull the power port straight out of its socket with your hands. The power port should come right out.

Step 17



- Remove four 2mm Phillips #1 screws from the base of the power supply box by placing the screwdriver in the head of the screw and rotating counterclockwise.

Step 18



- Remove the power supply box with your hands.

To reassemble your device, follow these instructions in reverse order.