



Apple iSight Webcam Body Frame Replacement

This is a guide to remove and replace the body frame of an external Apple iSight webcam.

Written By: Jesus Marcial



INTRODUCTION

This is a replacement guide for the external body of the Apple iSight webcam. The external body of the Apple iSight is composed of the silver structure and the cap with the Apple logo. The overall process is quick and easy. Follow these steps for a successful replacement.

TOOLS:

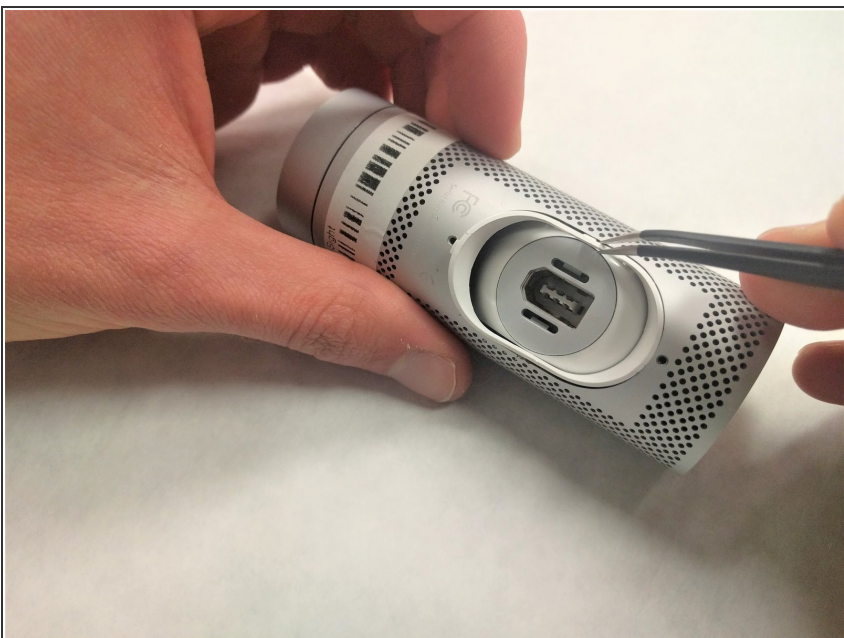
- [Phillips #000 Screwdriver](#) (1)
 - [Tweezers](#) (1)
-

Step 1 — External Body Frame



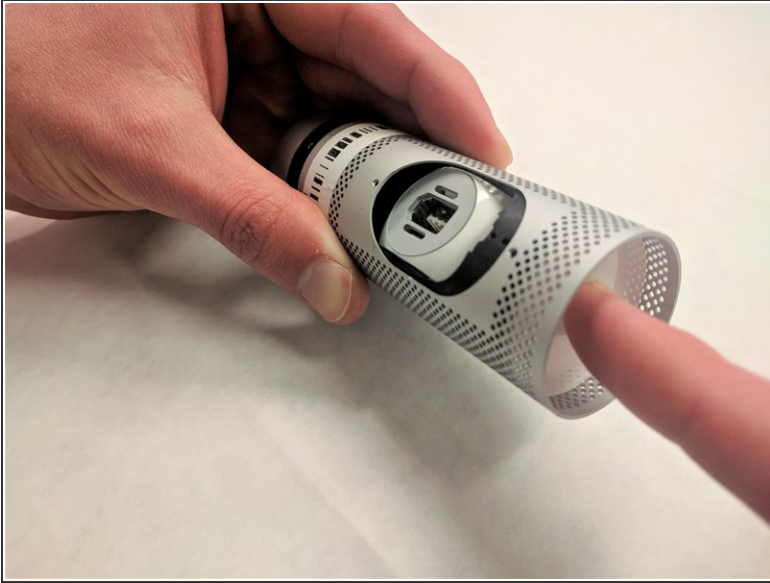
- Remove two 3.55 mm screws that hold the body to the ball and socket joint using the PH000 screwhead.

Step 2



- Insert the tweezers into the crevice of the ball and socket joint, and prop up the tabs to remove the white ring from the body.

Step 3



- Press the Apple logo through to pull apart the body frame from the body of the webcam.

To reassemble your device, follow these instructions in reverse order.