



Apple iSight Webcam Camera Replacement

Replace the camera module of the iSight webcam

Written By: Kaleb McArdle



INTRODUCTION

You will be separating the camera module from the rest of the device. This include removing 3 pin tabs/ribbons from the circuit board. You will have to do this carefully as any damage done to the pins will be hard to repair. The rest is just unscrewing screws.



TOOLS:

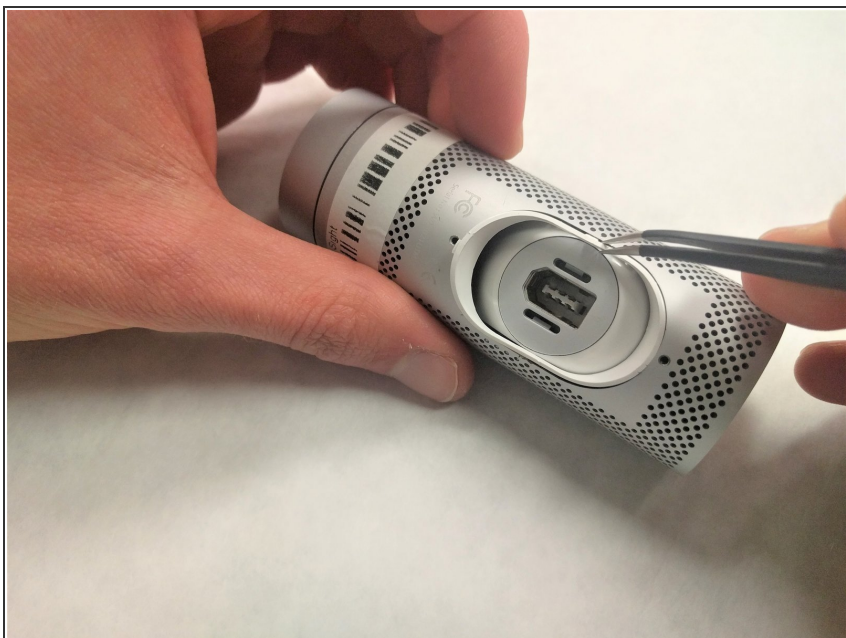
- [Phillips #000 Screwdriver](#) (1)
 - [Tweezers](#) (1)
-

Step 1 — External Body Frame



- Remove two 3.55 mm screws that hold the body to the ball and socket joint using the PH000 screwhead.

Step 2



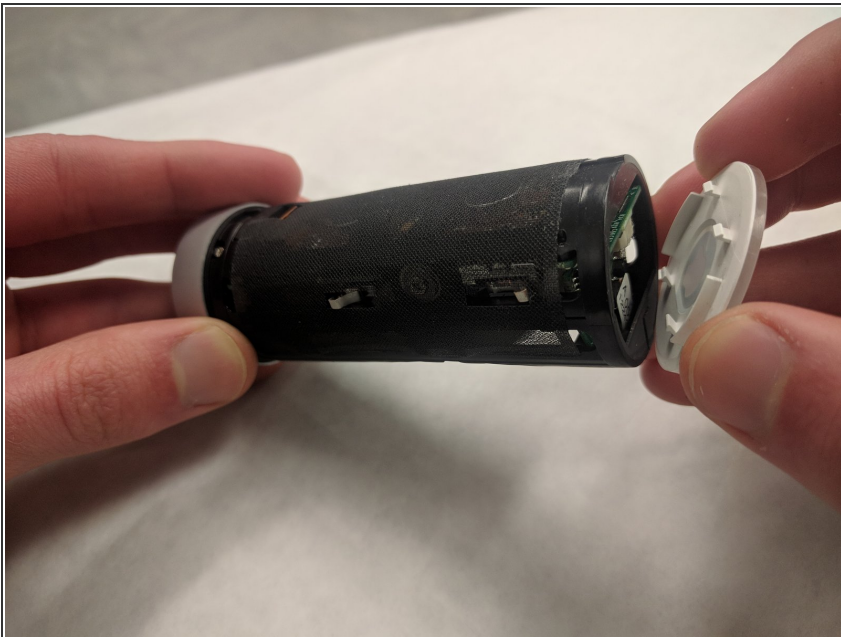
- Insert the tweezers into the crevice of the ball and socket joint, and prop up the tabs to remove the white ring from the body.

Step 3



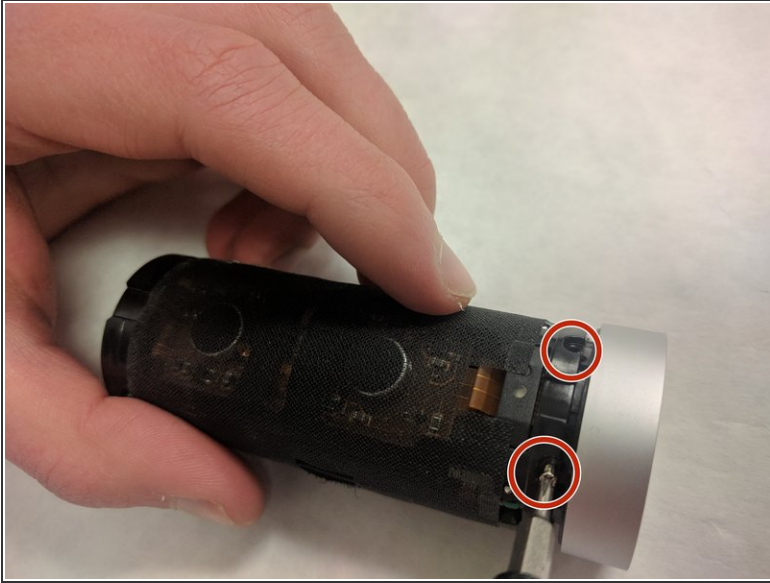
- Press the Apple logo through to pull apart the body frame from the body of the webcam.

Step 4 — Camera



- Remove the end cap with the Apple logo by simply pulling it off.

Step 5



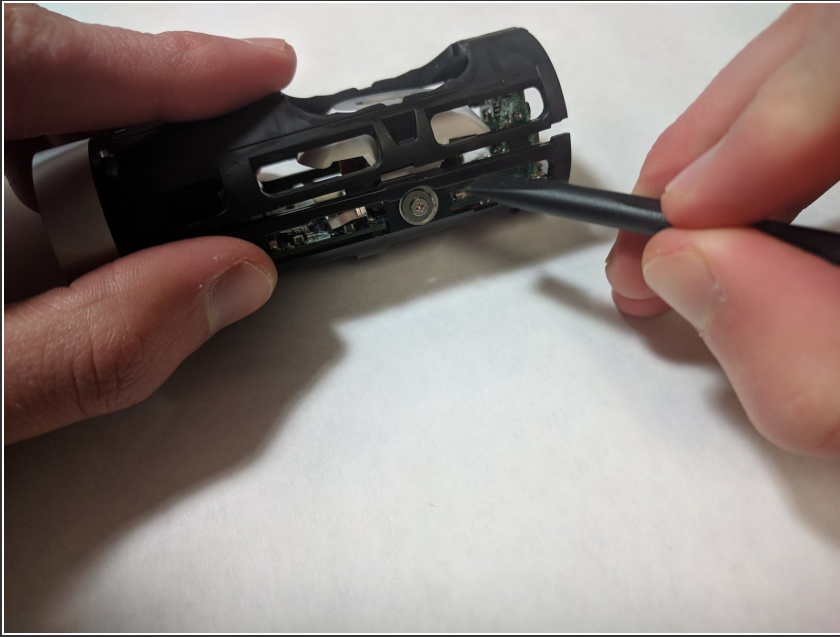
- Unscrew the 3 (3.55 mm) screws surrounding the black casing near the camera-lens.

Step 6



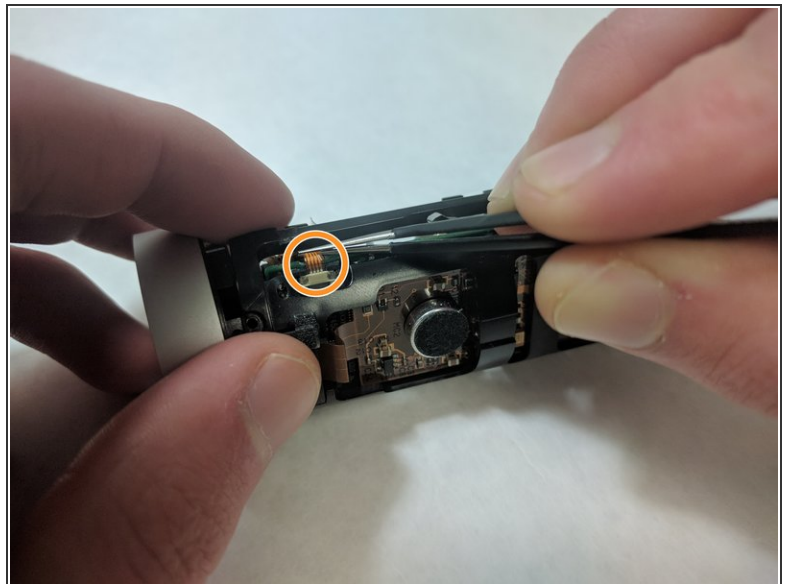
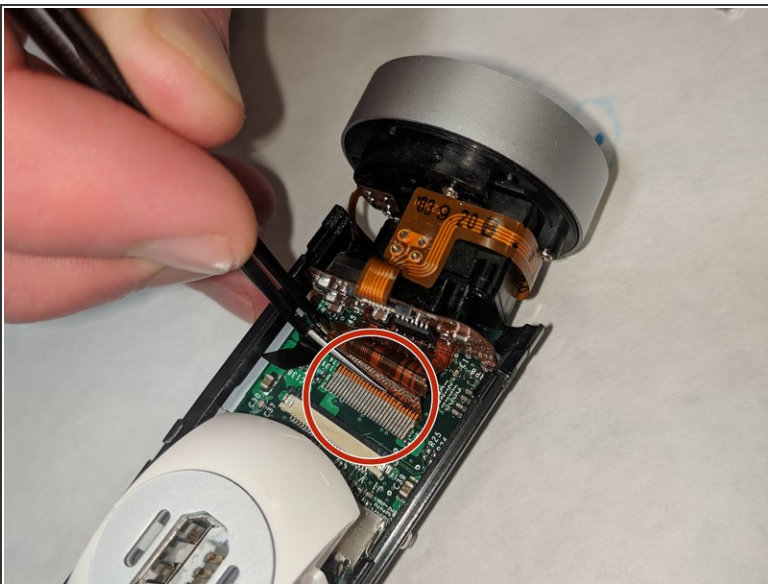
- Using tweezers, remove the netting that surrounds the black casing.

Step 7



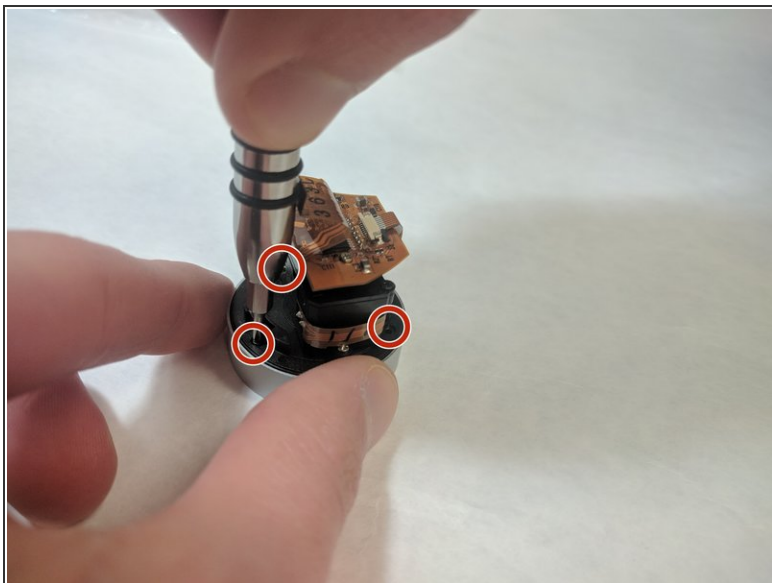
- Pry open the top of the black casing and pull it off.
- ⓘ There is slot on each side just below the power cord connector.

Step 8



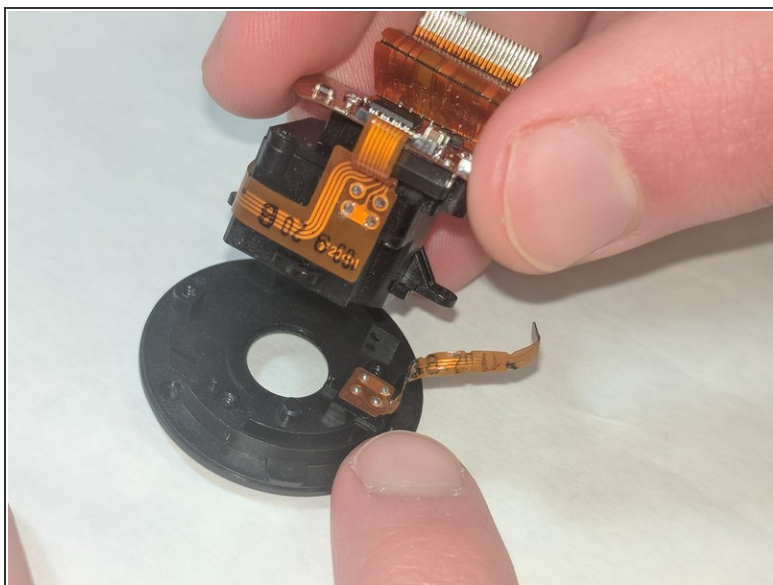
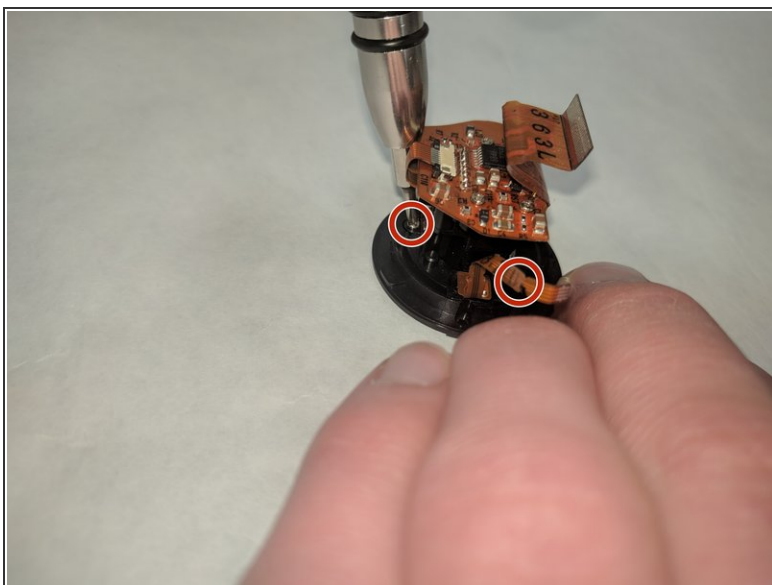
- Gently pull out the ribbon cables at the base of the circuit board. The camera module and lens cap are connected to the board via two busses.
- ⓘ Make sure that all pins are loose before pulling them out or you could risk bending the pins or breaking the connector.

Step 9



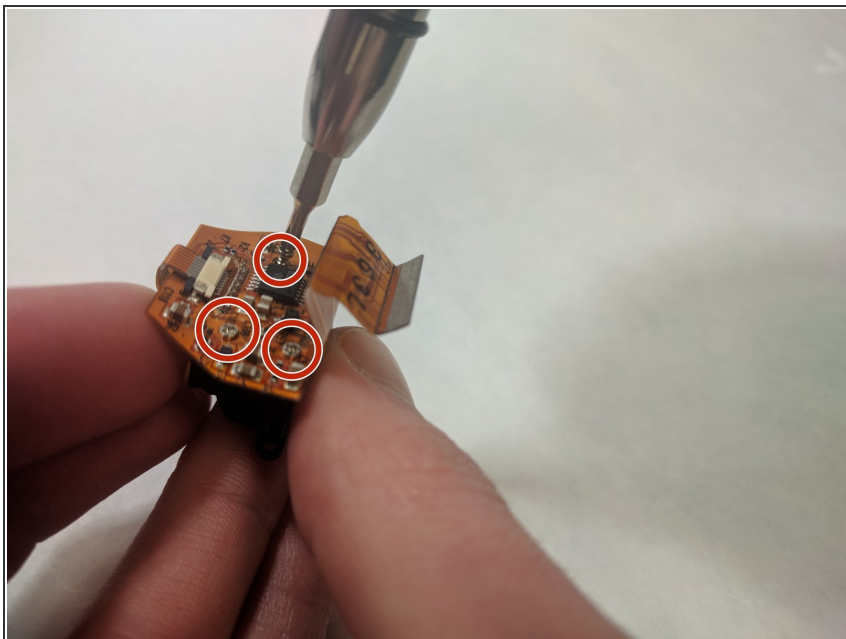
- Remove the three PH000 3.55mm screws that connect the end cap that holds the privacy shutter to the rest of the camera enclosure. Once the screws are removed, you can pull them apart.

Step 10



- Unscrew the three PH000 3.55mm screws from the connecting plate and the camera enclosure. Pull apart when all screws are removed.

Step 11



- Unscrew the three PH000 3.55mm screws securing the Camera module circuit board and lens enclosure.

Step 12



- Pull the pin tab from the base of the circuit board to separate the camera module and the lens enclosure.

To reassemble your device, follow these instructions in reverse order.