



Archos 5 Screen Replacement

Is your screen cracked? Use this guide to replace it.

Written By: Ally Hummel



INTRODUCTION

This guide will help you replace the screen on your Archos 5 tablet. Although this repair may take some time, don't be discouraged. You *can* do this yourself!



TOOLS:

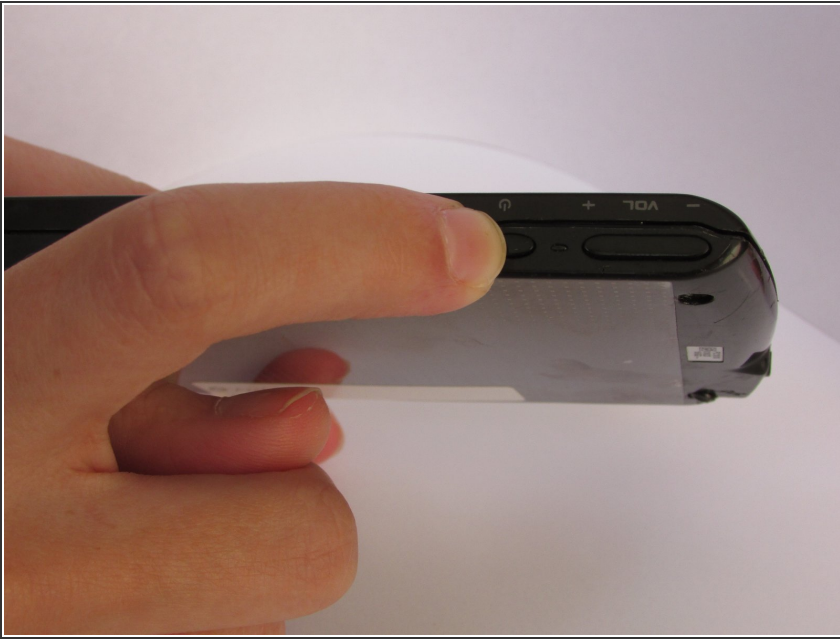
- [iFixit Opening Tools](#) (1)
- [Spudger](#) (1)



PARTS:

- [Screen Replacement](#) (1)

Step 1 — Screen



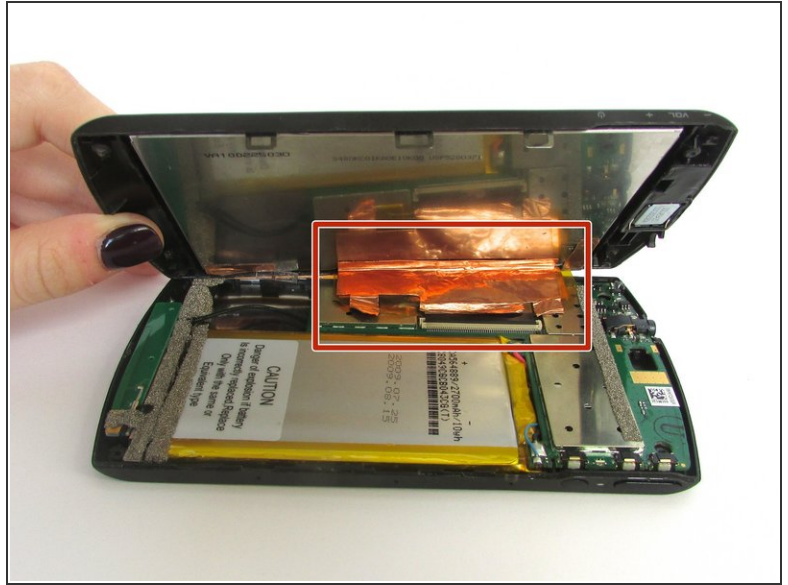
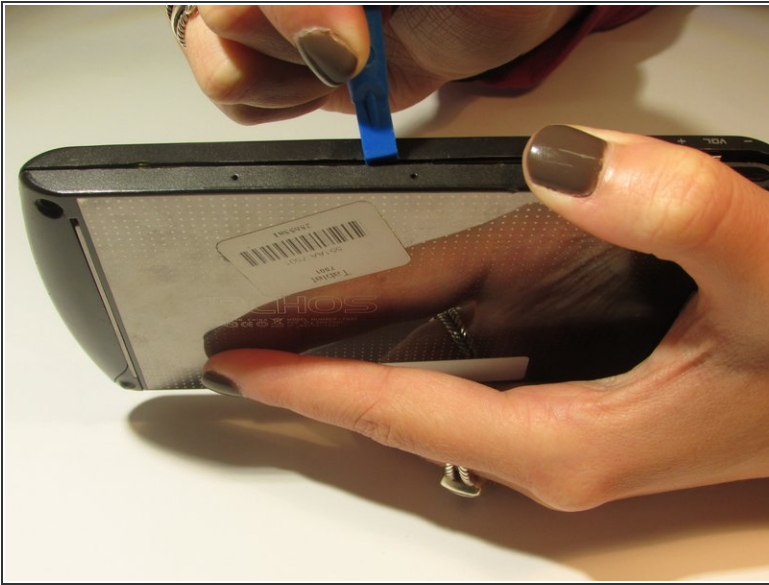
- ⚠ Please be sure that your device is powered off before attempting any repairs.
- ⓘ Please be aware that any further steps could possibly void the warranty of your Archos 5.

Step 2



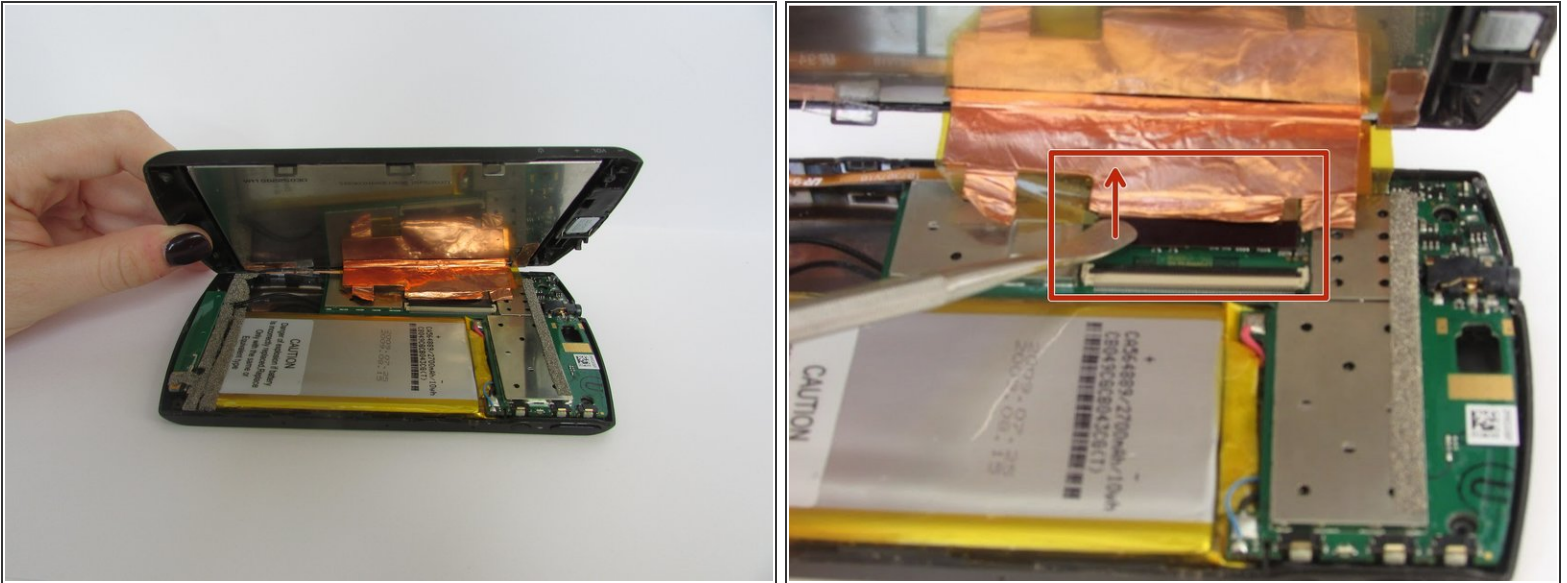
- Use the plastic opening tool to take off 3 black sticky pads that cover the screws.
- Use the screwdriver(PH000) to remove the screws located under the pads.
- ⓘ Lift the stand in order to get to the fourth screw.

Step 3




- Carefully pry open all 4 sides of the Archos 5 using the plastic opening tool.
 - Once all sides of the device are pried open, gently open the device .
- ⚠ Be careful not to tear the foil which connects the LCD screen to the motherboard!

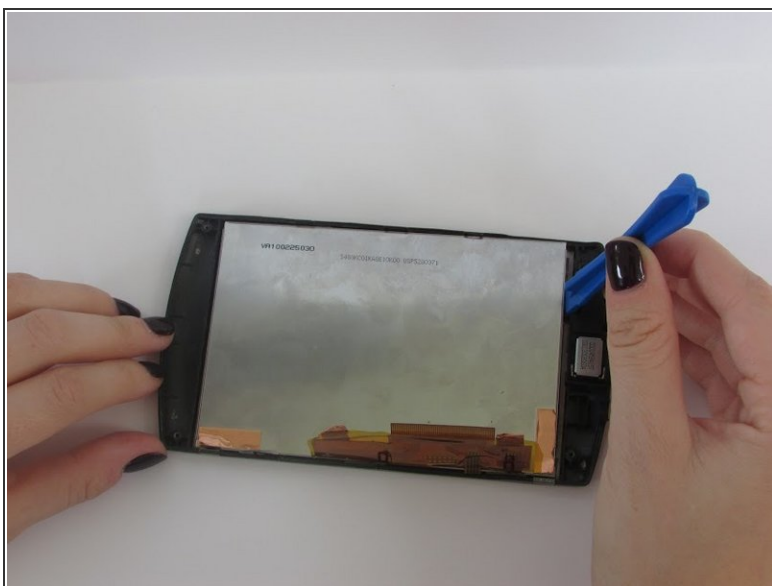
Step 4



- Once you have opened your device, fold the screen away from the battery.
- Unplug the touch pad from the motherboard. Do this by applying pressure on the thin black piece(attached at the bottom of the metallic foil) Press the plastic spudger against the thin black piece and release it.

 Use a plastic spudger instead of a metal spudger!

Step 5

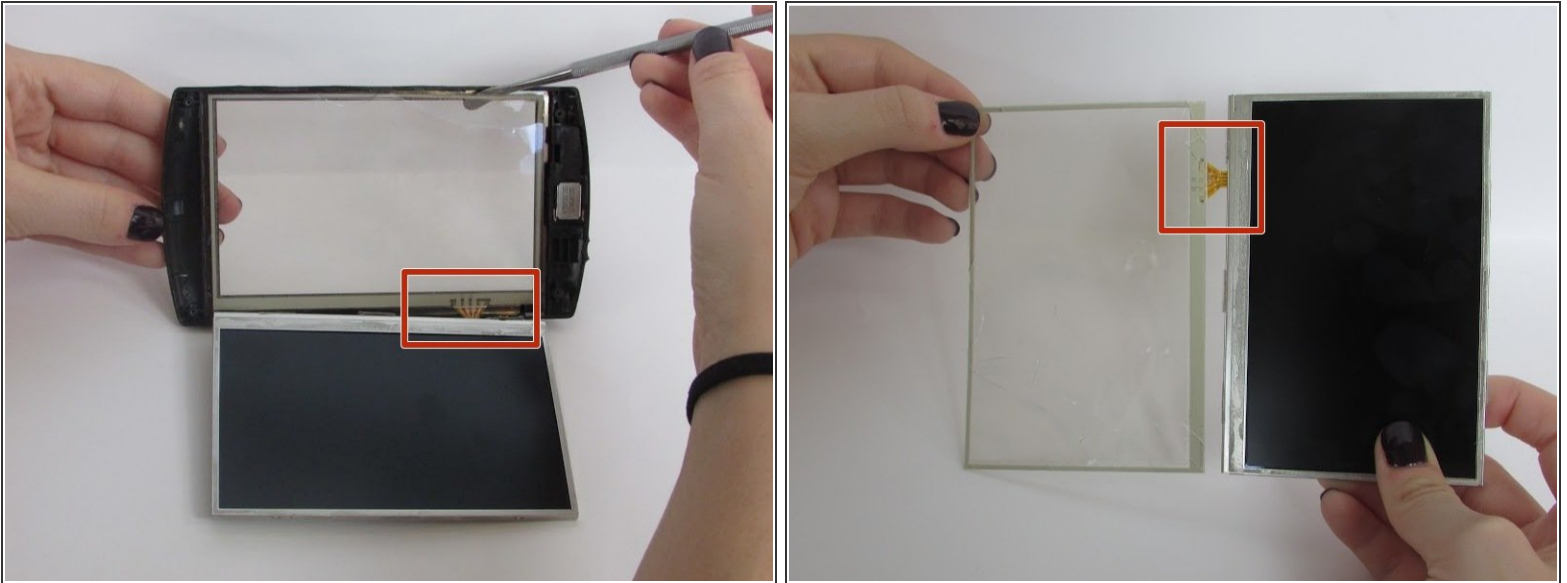


- Using the plastic opening tool, lift the touch pad away from the cracked screen



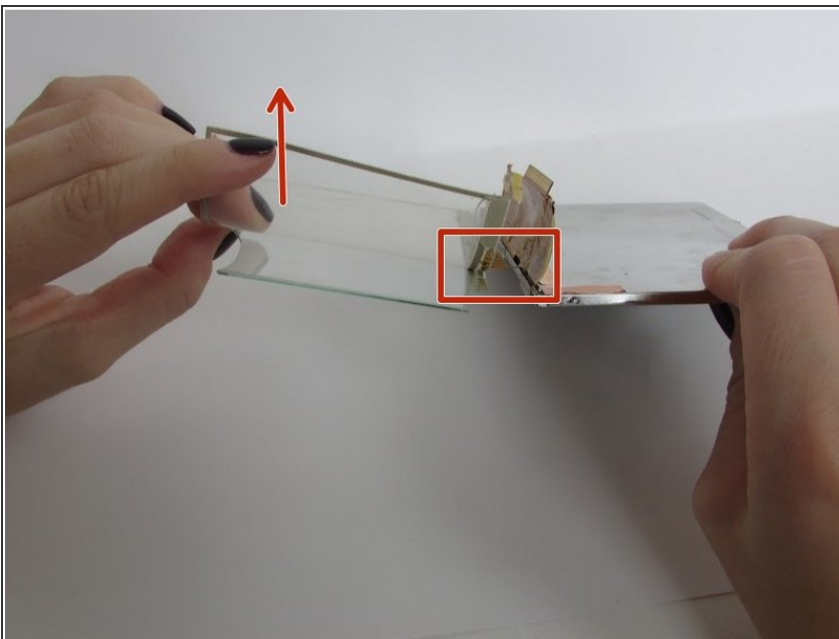
Be careful not to pull or tear the small film/wires as shown in the picture. These are vital to connecting the glass screen and the LCD screen.

Step 6



- Lift the cracked screen off of your Archos 5 using the **regular plastic** spudger.
- ⚠ Be careful not to rip or tear the film connecting the glass screen and the LCD screen.

Step 7



- Peel the plastic screen away from your shattered glass screen, and replace with your new glass screen.
- ⚠ The film connecting the glass screen and the LCD screen is attached the plastic and will peel away with it. Be careful not to rip or tear it.

To reassemble your device, follow these instructions in reverse order.