



Archos 605 WiFi Battery Replacement

Replacing the battery on the Archos 605 WiFi requires patience. The most interesting part is that the Archos may come on at any time if the power button is pressed. The only way to stop this is to disconnect the battery. Do not let this perturb you. :)

Written By: oldturkey03



INTRODUCTION

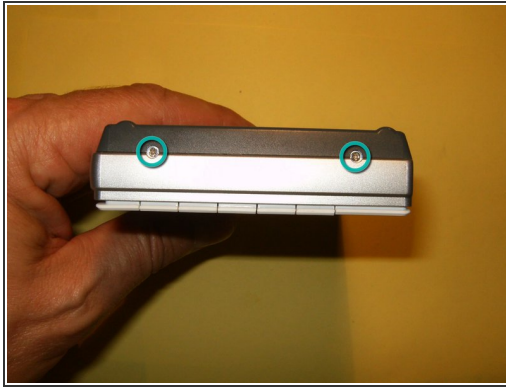
This is a bit tough, but not impossible. It is important to work in a well lit and organized environment.



TOOLS:

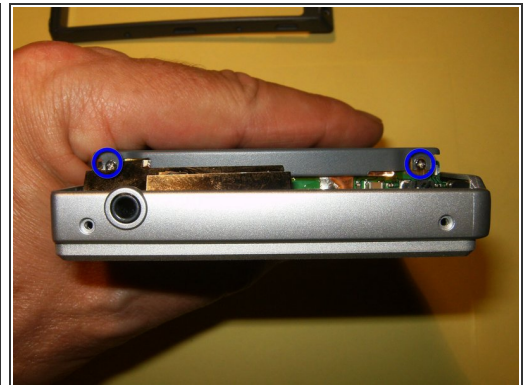
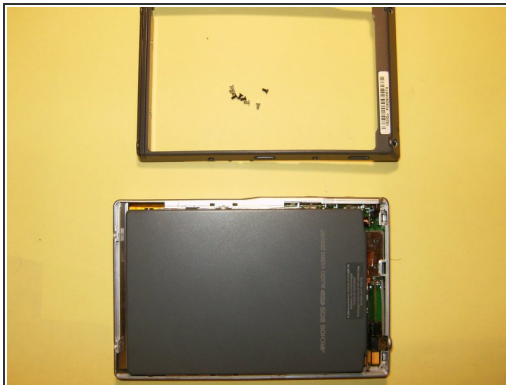
- [2.5mm Allen Wrench](#) (1)
 - [Phillips #000 Screwdriver](#) (1)
 - [Soldering Iron](#) (1)
-

Step 1 — Battery



- Remove the two Phillips screws from the top.
- Remove the two Phillips screws from the right side.
- Remove the two Phillips screws from the left side.

Step 2



- Remove the two Phillips screws from the bottom.
- You can now remove the back cover bezel.
- Remove the two Phillips screws from the hard drive back plate.

Step 3



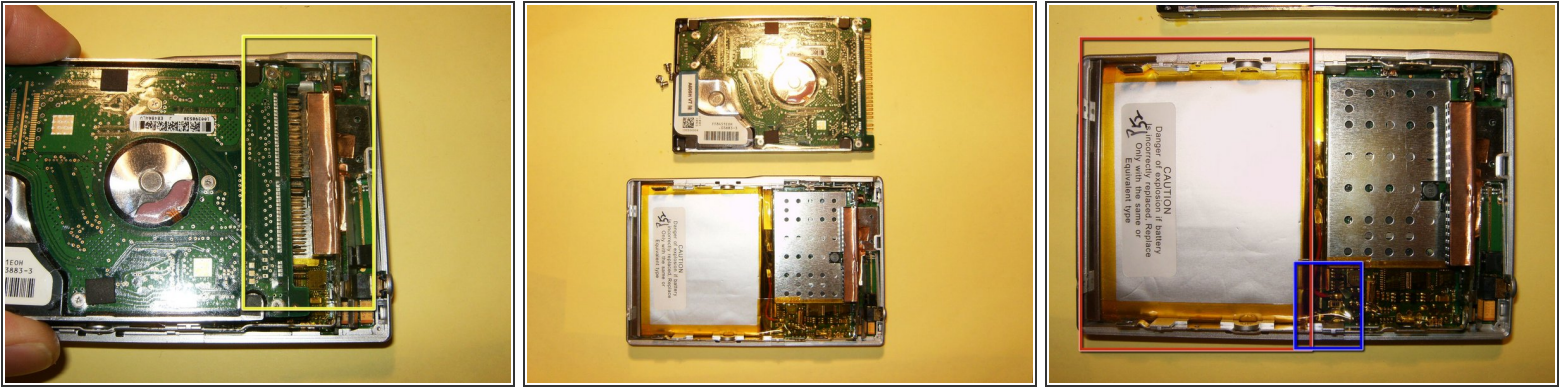
- Remove the hard drive back plate
- The hard drive is mounted to the Archos via 4 Allen screws. Two on the top and two on the bottom
- Use the Allen wrench to remove the two screws on the top.

Step 4



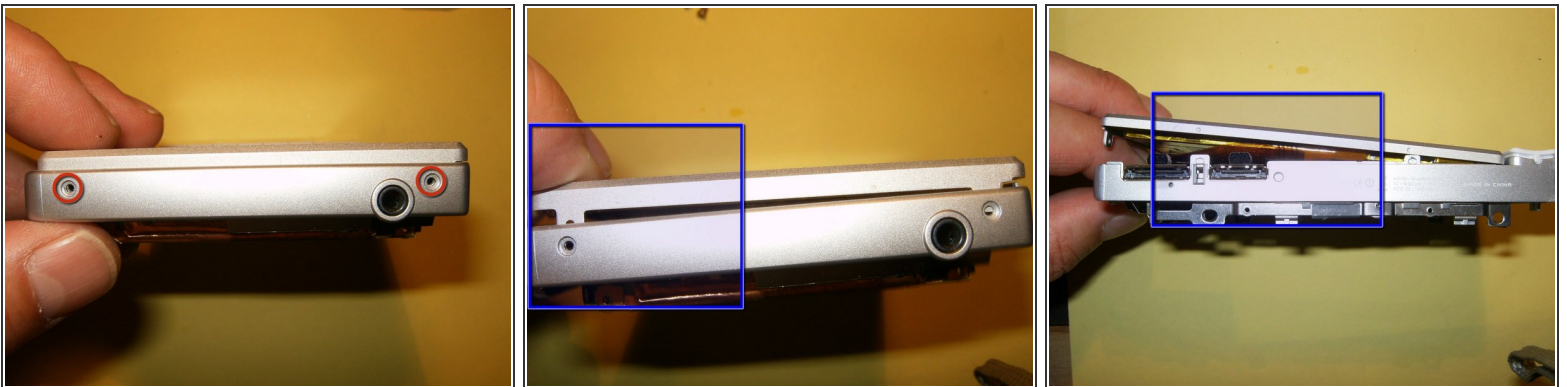
- Remove the two Allen screws from the bottom.
 - Another view of the two Allen screws on the top part.
 - With the four screws removed, gently lift the non-connector side of the hard drive. It will only need to come up by about 1/4 of an inch.
- ⚠ DO NOT lift it to high on that side, it may bend the pins on the connector.

Step 5



- With the hard drive still angled, slide it out and away from the connector.
- Remove the hard drive completely from the Archos.
- The battery can now be fully seen.
 - The battery is soldered to the logic board. The battery cannot be removed, yet.

Step 6



- To remove the battery, the display will have to be removed. The two screws that were previously removed actually held the display to the frame.
- Fingernails will be a perfect tool to just slightly lift the screen out of the frame.
- The Display is snapped into place on the side of the dock connector. This end can come loose first by using your fingernails between the frame and the display.

Step 7



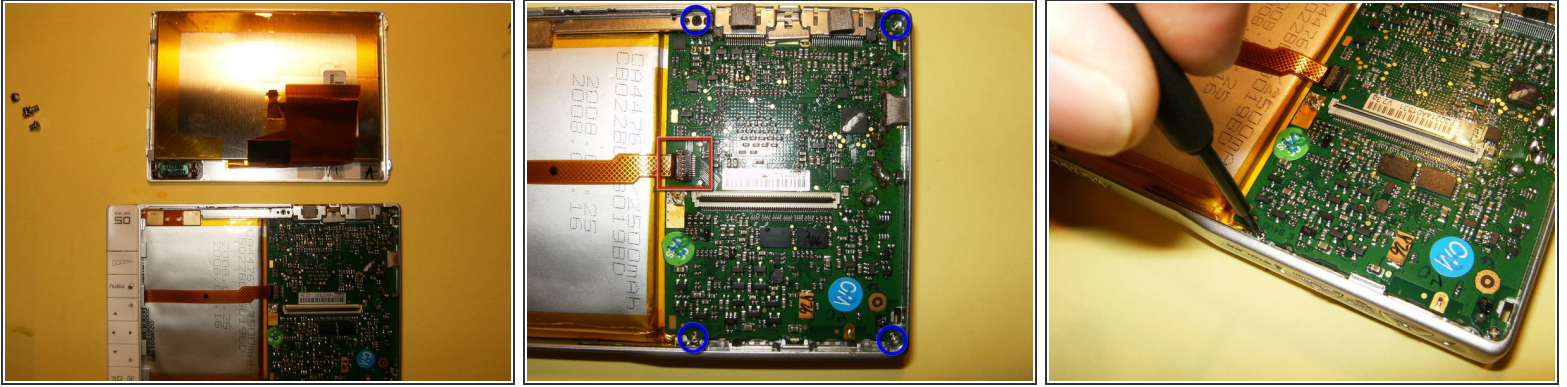
- This is the maximum angle at which to hold the display to remove it from that side.
- Gently pull the display away from the button bar, until it just clears the snaps on that side.
- Angle the display upwards to see the:
 - Ribbon cable connector
 - Soldered ground connection

Step 8



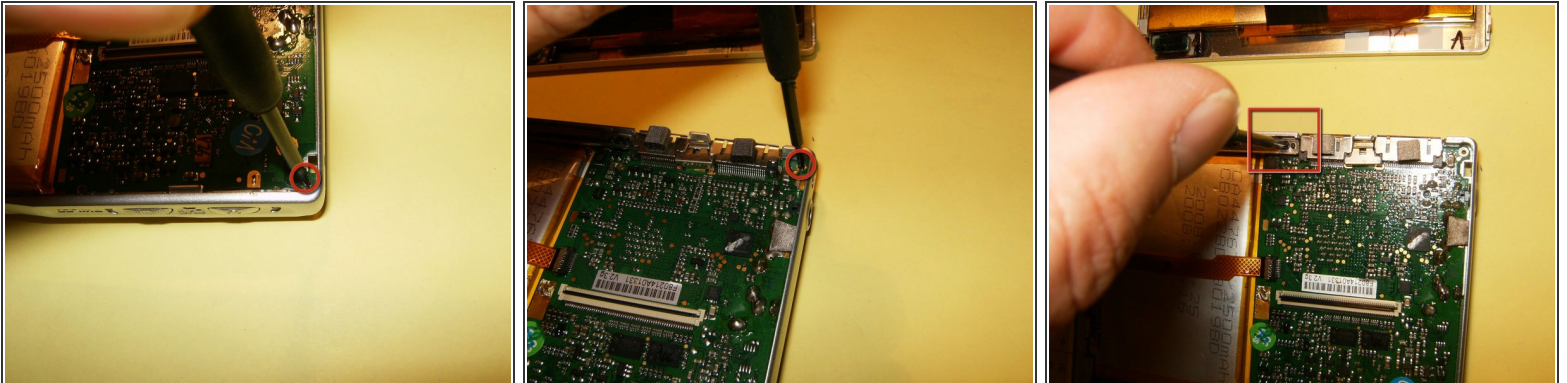
- Open the clip that holds the ribbon cable into the connector, by flipping it away from the cable side.
- Unsolder the ground cable from the logic board. Using desoldering braid will ease this task.
- Both connections from the display are now removed.

Step 9



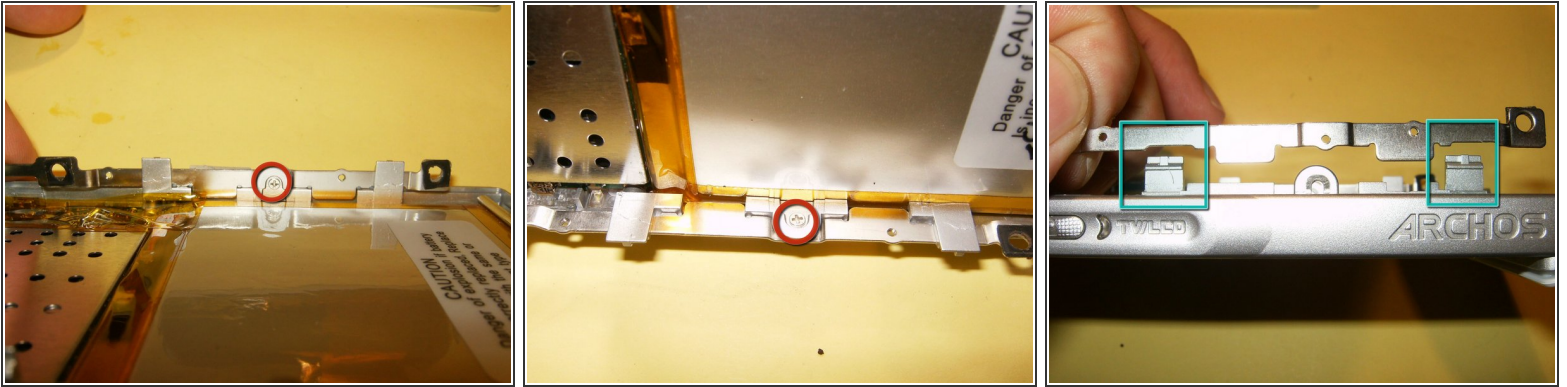
- Remove the display from the Archos.
- The logic board is fastened to the housing by four Phillips screws.
- Remove those screws with the Phillips screwdriver.

Step 10



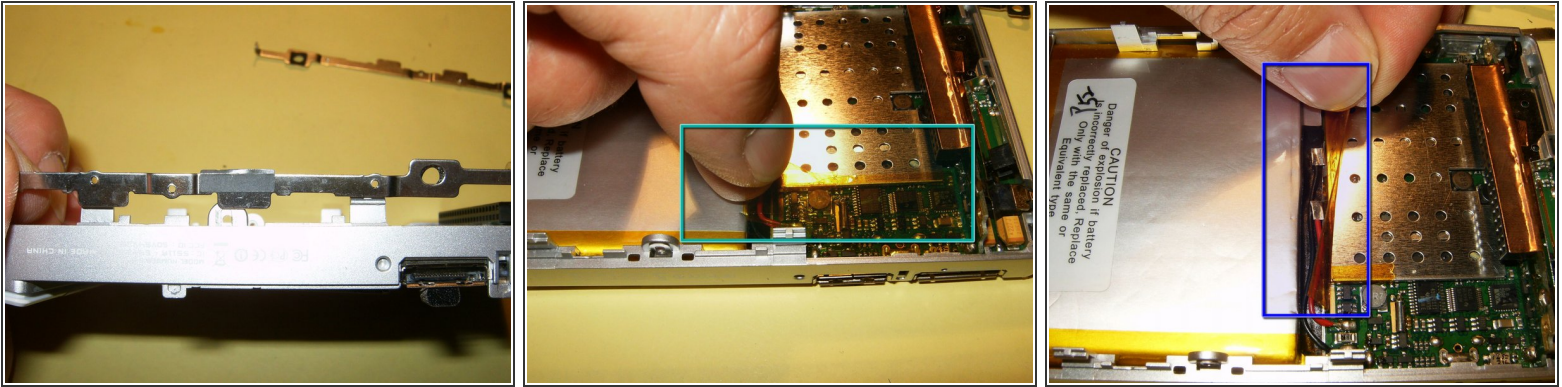
- Remove the bottom right side Phillips screw.
- Remove the top right side Phillips screw.
- The top left side Phillips screw is colored black and is mounted within a plate coming of the button bar. Just remove the screw, not the bar.

Step 11



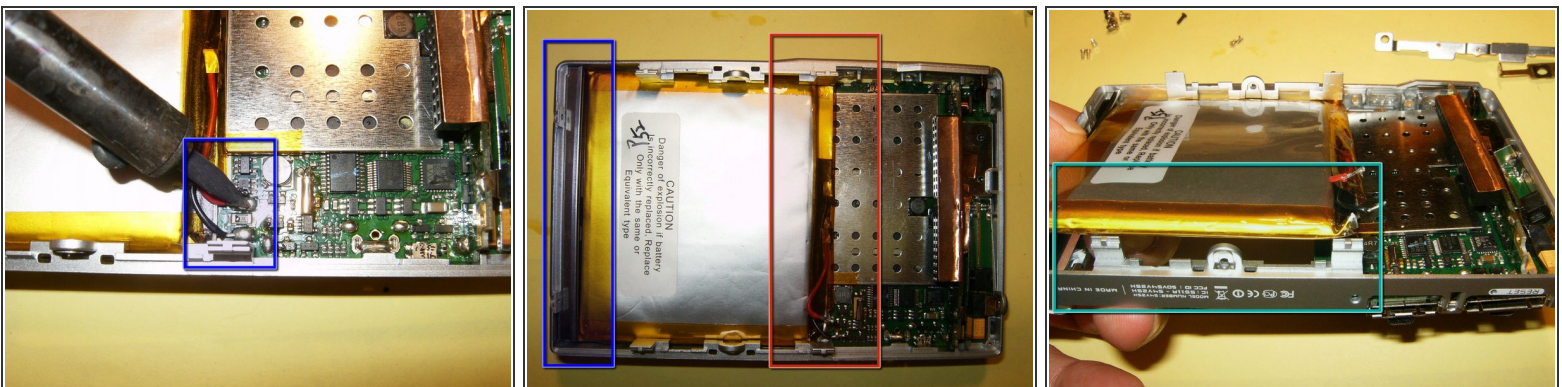
- The battery has an extremely tight fit within the Archos. To maximize that room, the upper and lower hard drive rail need to be removed.
- Remove the single Phillips screw that holds the top rail to the frame.
- Remove the single Phillips screw that holds the bottom rail to the frame.
- This shows how the rail fits to the frame. Besides the screw, it also clips to the frame and requires a slight twist.

Step 12



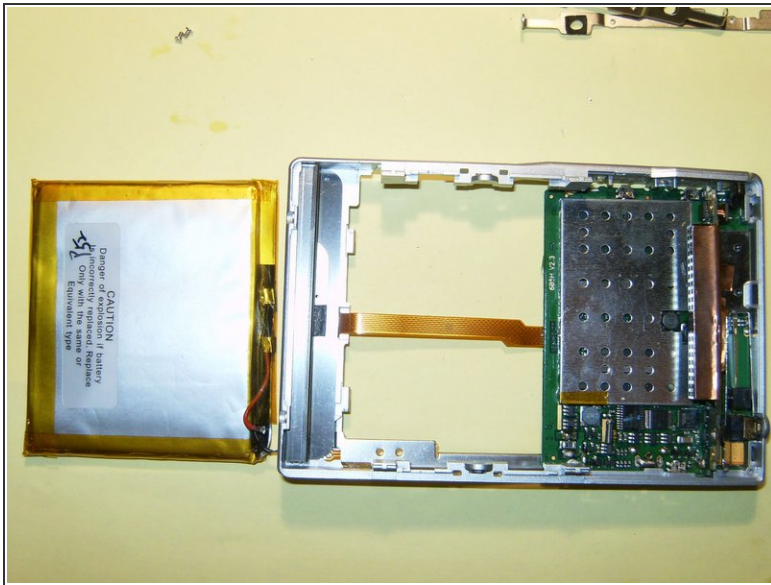
- This shows the bottom rail and its orientation to the housing.
- Remove the cellophane that covers the battery connectors as well as part of the logic board.
⚠ Do not discard the cellophane, it will have to be replaced during the reassembly.
- Loosen the cellophane that comes from the battery to the logic board. It can not be removed completely, but must be lifted off of the logic board.

Step 13



- Unsolder the red and black wire from the logic board.
- Here is the reason for loosening the logic board. Push it lightly below the level of the battery.
 - Shimmy the battery toward the logic board. It will just clear the back of the housing.
- Angle the battery to one side to remove it from the housing. The plastic of the housing, as well as the battery have a very small amount of flex. This flex is enough to free the battery.

Step 14



- Remove the battery from the Archos. Take a break, reorganize and install the new battery.
- This is the result that is expected. A fully working Archos that maintains a charge.

To reassemble your device, follow these instructions in reverse order.