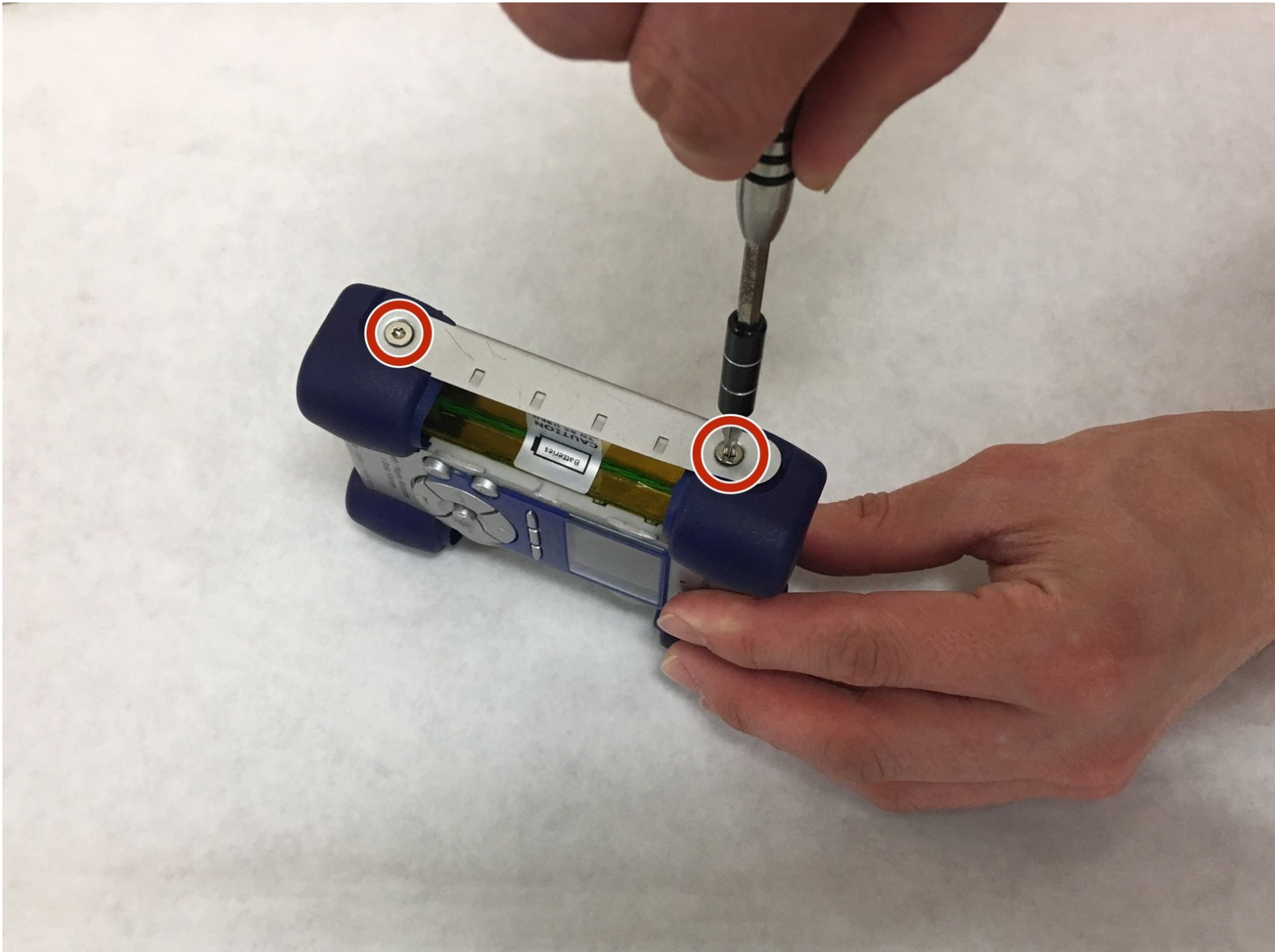




Archos Jukebox Recorder 20 Hard Drive Replacement

This is a step-by-step guide for replacing the hard drive in an Archos Jukebox Recorder 20.

Written By: Aidan Patterson



INTRODUCTION

In this guide the user will learn how to disassemble an Archos Jukebox Recorder 20 in addition to learning how to replace the hard drive.

TOOLS:

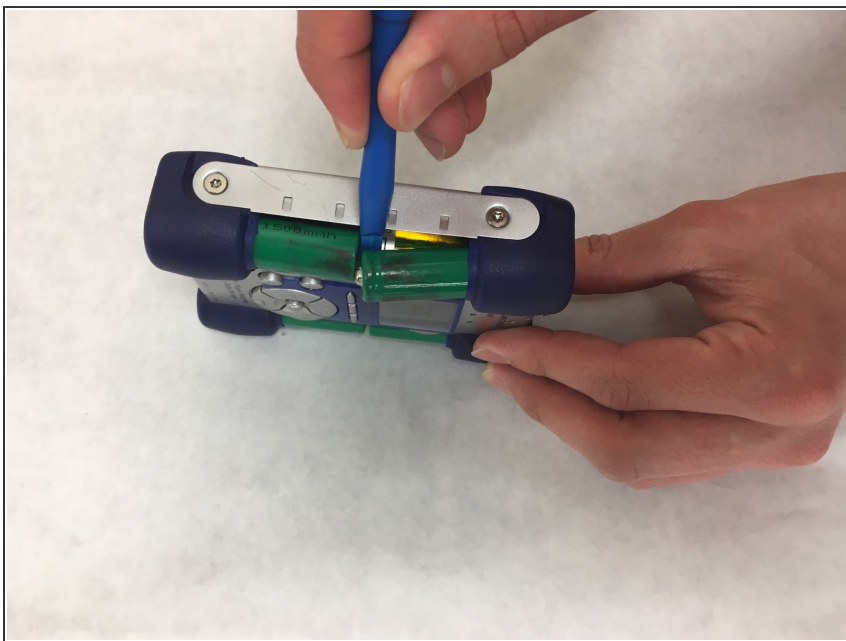
- [iFixit Opening Tools](#) (1)
 - [Phillips #0 Screwdriver](#) (1)
 - [T10 Torx Screwdriver](#) (1)
-

Step 1 — Battery



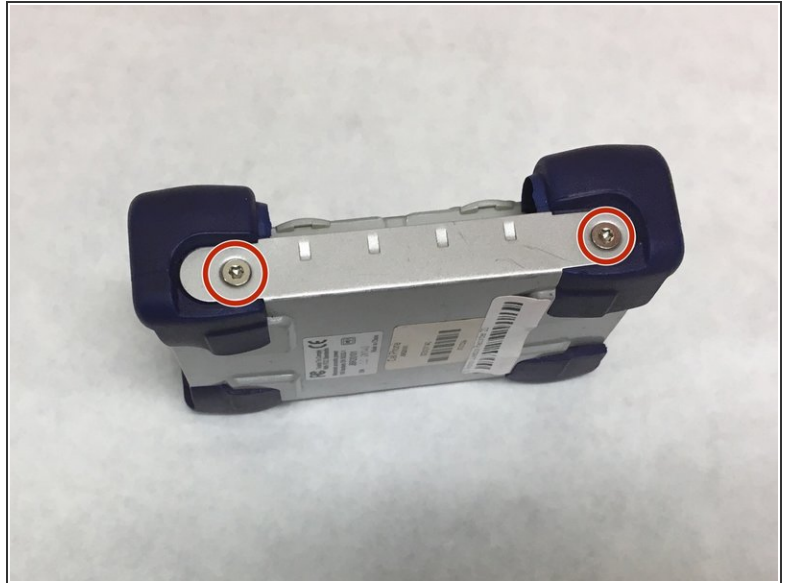
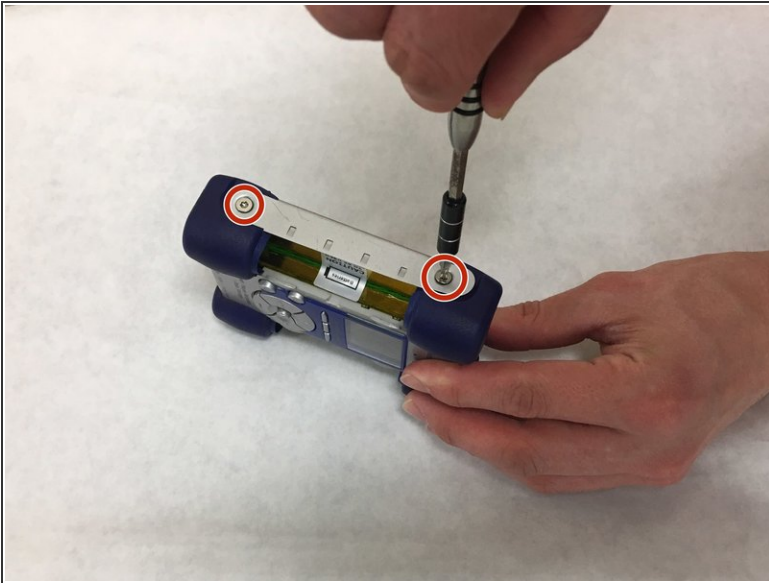
- Remove the plastic cover over the batteries on both sides of the device.

Step 2



- Remove the batteries (may require a plastic opening tool or spudger to pop the batteries out).

Step 3 — Hard Drive



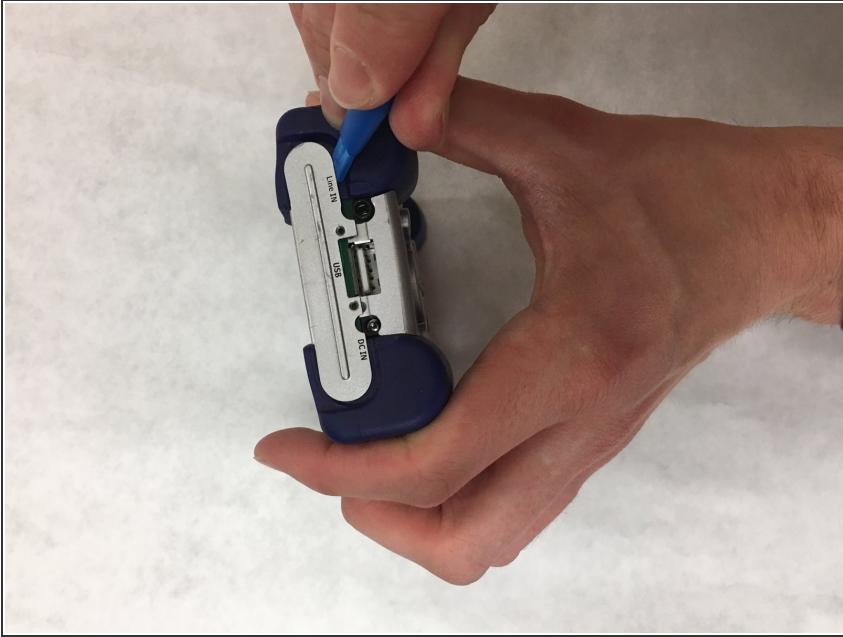
- Use the T10 Torx Screwdriver to remove the 2 torx screws on each side of the device.
 - ⓘ Two on each side for a total of four.

Step 4



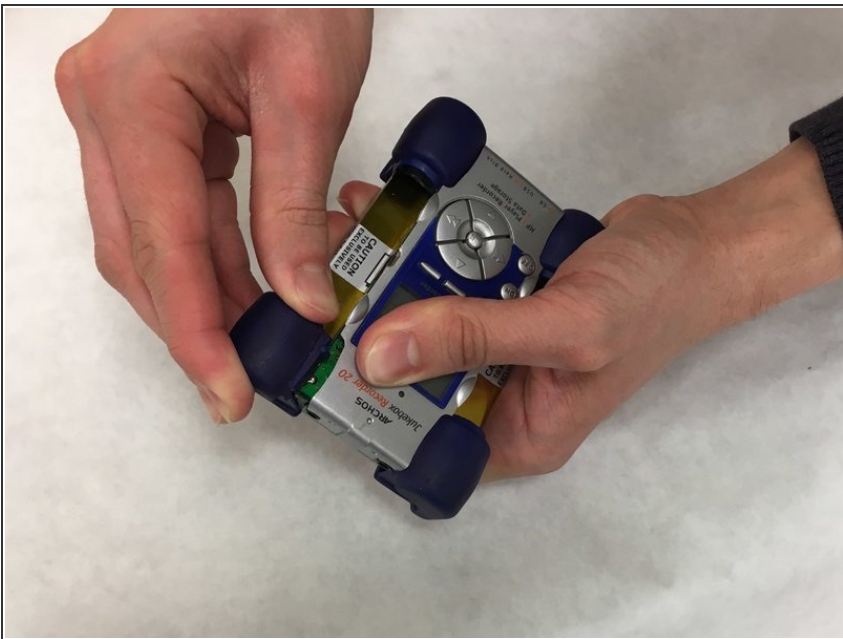
- Remove the 2 screws on the top and the 2 screws on the bottom of the device using a Phillips #0 screwdriver.

Step 5



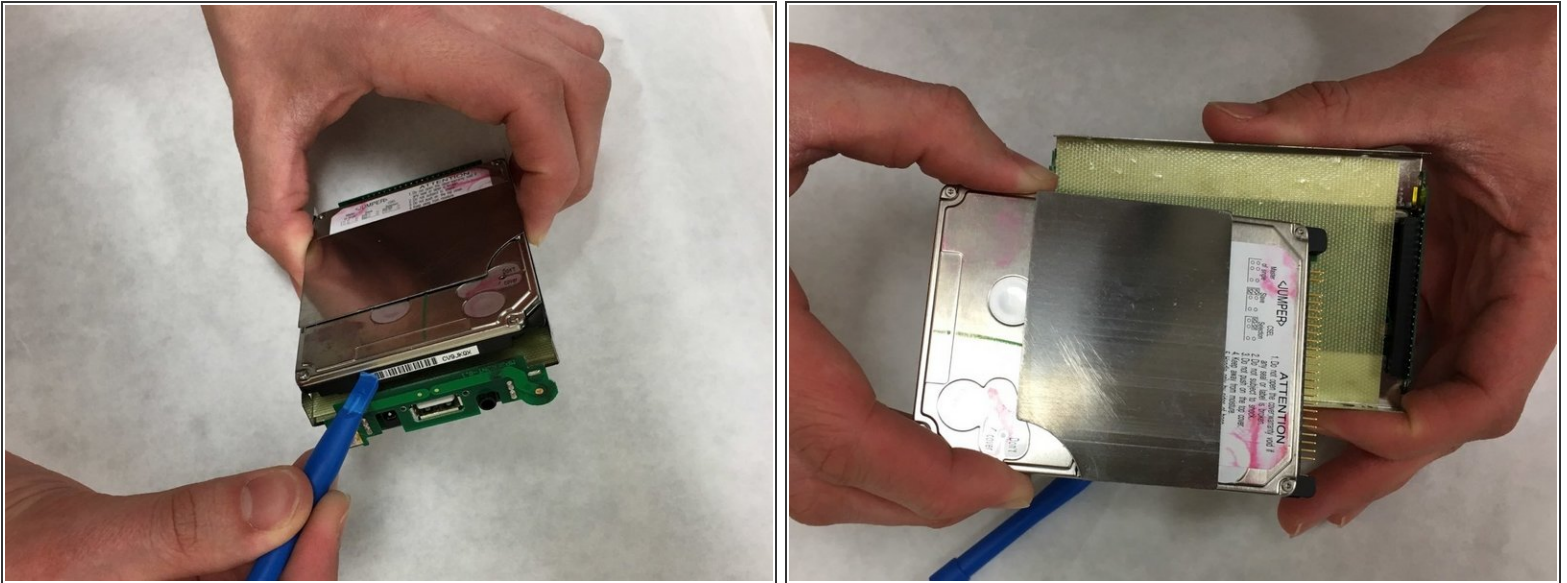
- Remove the outer metal casing of the device by popping it off with a plastic opening tool.

Step 6



- Remove the rubber bumpers on all four corners of the device.

Step 7



- Lift the hard drive out of its casing with the help of a plastic opening tool and slide it out. This will disconnect the pins connecting the drive to the rest of the device.

To reassemble your device, follow these instructions in reverse order.