



ArmorAll AA255 Motor Replacement

This guide shows how to disconnect and replace the vacuum motor of your ArmorAll AA255.

Written By: YeaJun Yoo



INTRODUCTION

The device will be disassembled down to the motor, the power cords will be disconnected, and the motor removed of your ArmorAll AA255.

TOOLS:

- [Phillips #2 Screwdriver](#) (1)
 - [T20 Torx Screwdriver](#) (1)
 - [Heavy-Duty Spudger](#) (1)
-

Step 1 — Lower Motor Housing



- Remove the orange main housing unit from the vacuum bucket by pulling outward on the handle tabs while lifting upward as shown.

Step 2



- Remove the five 15mm PH2 screws.

Step 3



- Remove the 15 mm T20 screw. This screw is located nearest the power cord.

Step 4



- Gently separate the upper and lower sections of the main housing.

Step 5 — Motor



- Use a PH2 screwdriver to remove the five 15mm screws on the ball cage under the main housing.
- Pull the ball cage to remove it from the main housing.

Step 6



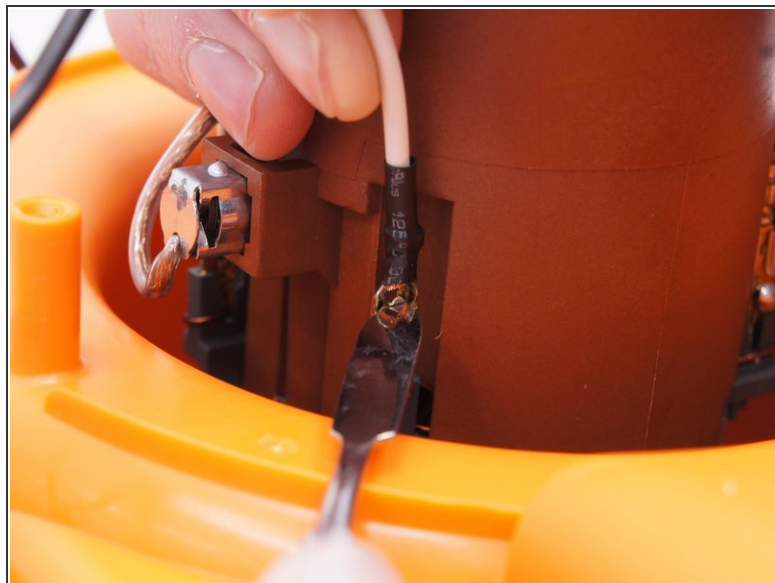
- Remove one 13mm nut from the main housing.
- ⚠ The metal ring under the nut has sharp edges. You may need to use a tool such as pliers to prevent injury.
- Remove metal ring from the main housing.
 - Use a PH2 screwdriver to remove the four 12mm screws from the main housing.

Step 7





- Turn the whole body over to separate motor cover.
- Use a PH2 screwdriver to remove the five 15mm screw.
- Remove the white power wire from the motor cover.
- Pull the motor cover from the main housing.

Step 8

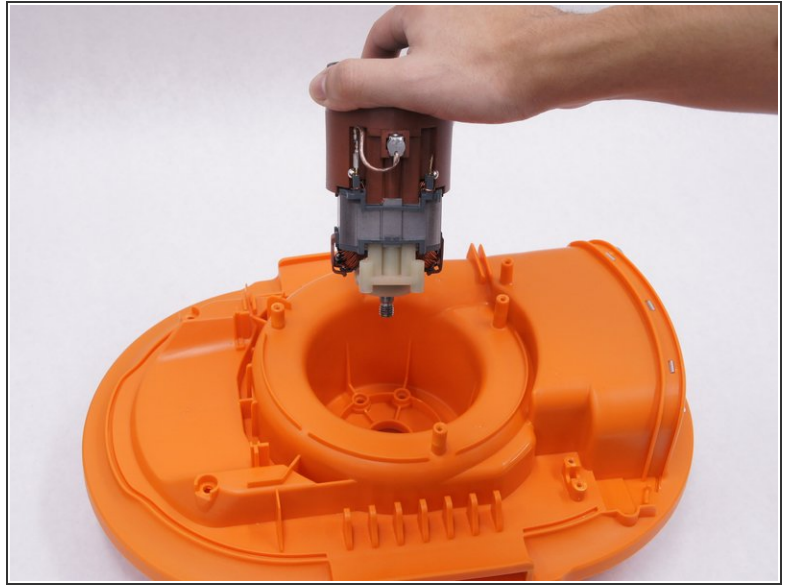


- Use a plastic opening tool to remove two cables from the motor. One white cable is from the power cord, and one black cable is from the switch.

 When working with electronics, it's important to choose a tool that's ESD-safe to avoid accidental damage to the device. The regular black nylon spudger or a plastic opening tool should be used whenever possible.

 You may need to mark the color of the wire on each terminal for reassembly.

Step 9



- The motor is ready for replacement. Pull the motor to separate.

To reassemble your device, follow these instructions in reverse order.