



Assembly

Assemble your Free Wheelchair Mission GEN 1 wheelchair.

Written By: Erica Solum



INTRODUCTION

This guide will walk you through all the steps to correctly assemble the Free Wheelchair Mission GEN 1 wheelchair.

But first, familiarize yourself with tools you will be using with the [Free Wheelchair Mission Tools Maintenance Guide](#).



TOOLS:

- [10mm Wrench](#) (1)
 - [Large Needle Nose Pliers](#) (1)
 - [Socket 19mm](#) (1)
-

Step 1 — Chair and Main Frame



- Fit the lawn chair with the main frame by aligning the back of the lawn chair with the frame
 - ⓘ The chair should fit in easily
- ☑ Make sure the rear legs of the lawn chair are inside the frame and the back of front legs line up with the holes on the front of the frame

Step 2 — Front Frame and Castor Wheels



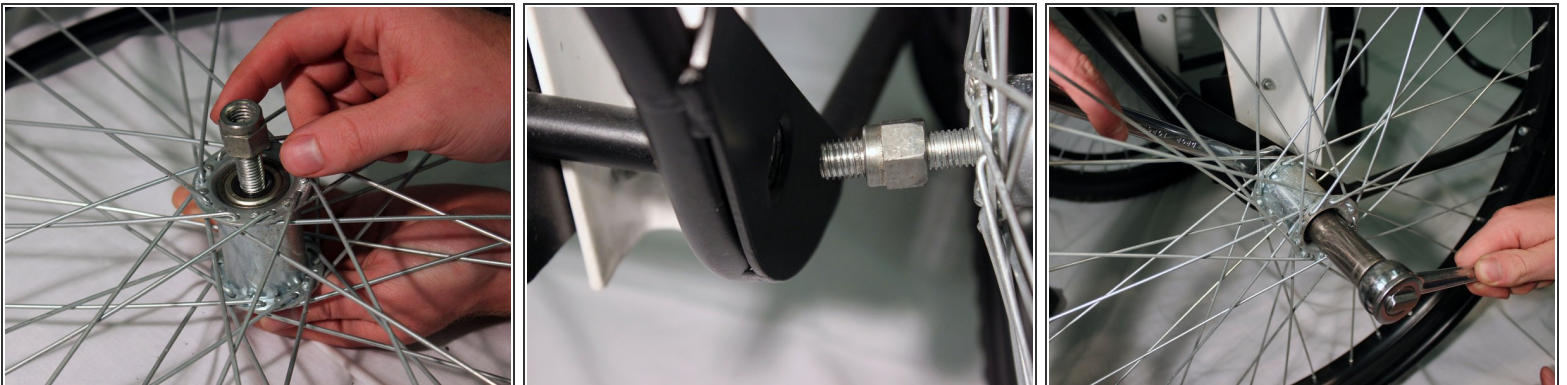
- Line up one of the castor wheels with the holes on the front legs of the wheelchair and align the front frame with the castor wheels
- Make sure the guide knob on the castor wheel faces forward and the front frame fits perfectly with the guide knob
- Insert one long bolt through the top-most hole connecting the front frame, castor wheel, lawn chair, and main frame
- Using pliers and the 10mm wrench, securely fasten a nut to the bolt and repeat on the other side

Step 3 — Axel and Axel Plates



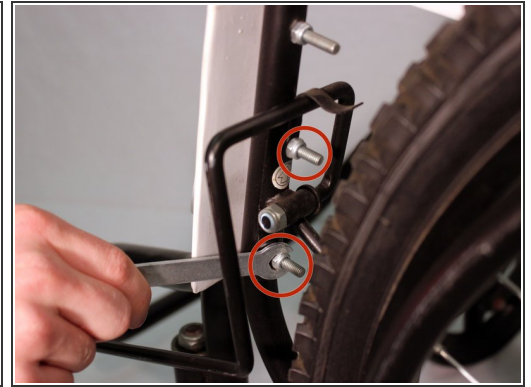
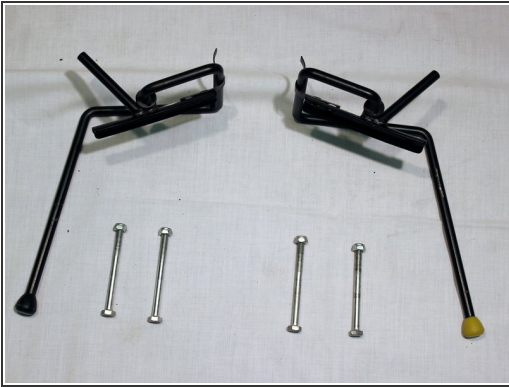
- Slide both of the axle plates onto the axle
- Position each of the plates on the inside of each of the lawn chair legs
- Attach both of the plates to the chair by screwing in two screws to to each plate
- Use the pliers to hold the nut while screwing in the screw with a 10mm wrench

Step 4 — Rear Wheels



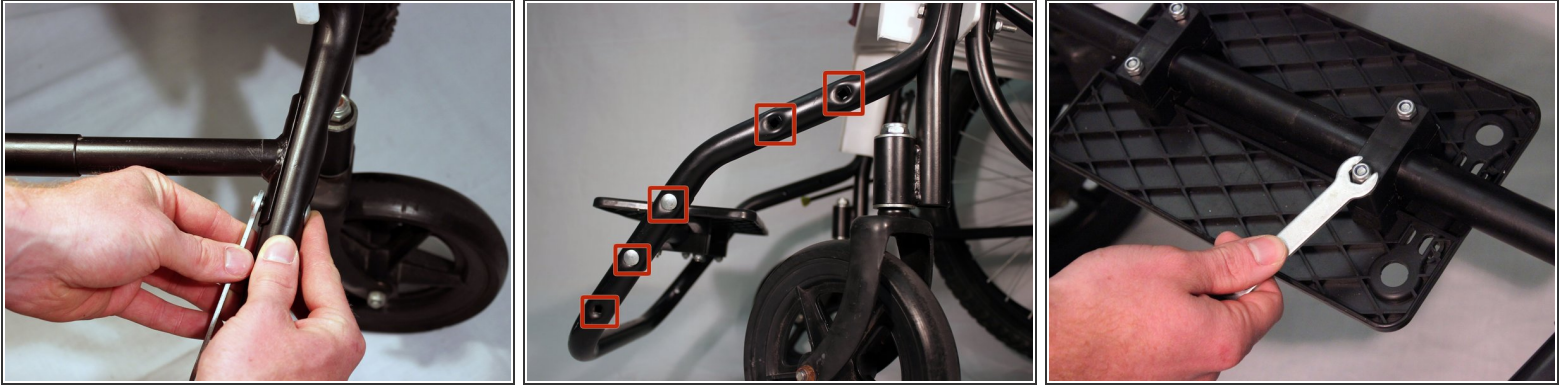
- Slide the 19mm axle bolt into one of the rear wheels and then hand-tighten the nut onto the bolt
- Insert the bolt into the axle so that the wheel is attached to the side of the frame
- Use the 19mm crescent wrench to hold the nut in place and use the socket wrench (or multi-purpose tool) to screw the axle into the frame

Step 5 — Brakes



- Locate the both of the brakes and the four long screws
- Place the brake behind the front frame right above the castor wheels
 - ⓘ The brake with the yellow nob goes on the right side of the chair, and the brake with the black nob goes on the left
- Screw both of the screws into the bottom two holes in the frame using a 10mm wrench to hold the nut and the T-Wrench to fasten the screws
 - ⓘ You can use a power drill instead of a T-Wrench to speed up the process

Step 6 — Footrest



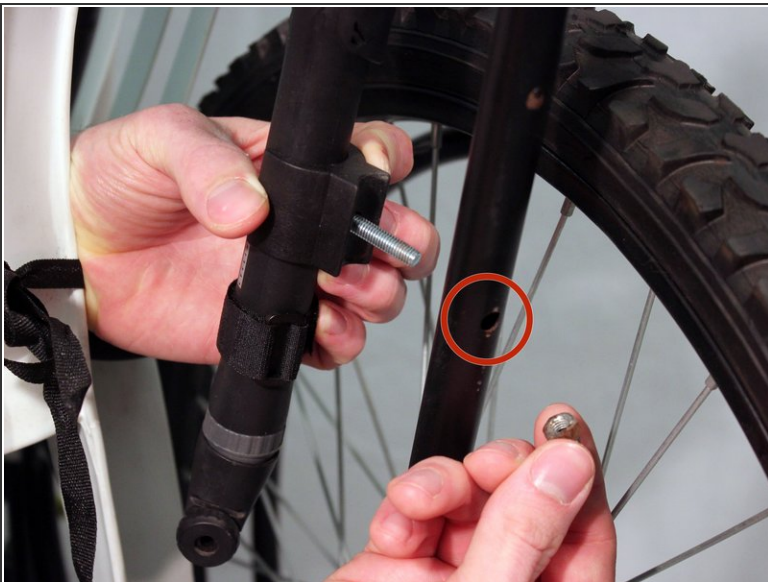
- Position the extendable footrest bar to the front frame at the desired height
- Make sure the two bolt holes on the footrest bar line up with two of the holes on the front frame
 - ⓘ Pick the suitable position for the footrest that will complement the recipient (the position may be changed later)
- Using the 10mm wrench, secure the footrest bar to the front frame using the a flat-head bolt and nut pointing in towards the center of the wheelchair
- Attach the footrest to the footrest bar with the bottom of the footrest pointing upwards
- Match the footrest wedges up with the holes and attach the footrest to the front frame using 4 small bolts and tighten 4 small nuts onto the bolts using the 10mm wrench
 - ⓘ The heads of the bolts should fit perfectly through the footrest

Step 7 — Attach Cushion



- Place the cushion on top of the lawn chair seat and tie each of the 4 straps to the edge of the chair

Step 8 — Hand Pump



- Using the final bolt and rounded nut, attach the hand pump to the back right side of the main frame next to the right rear wheel
- Secure the hand pump to frame using the 10mm wrench

To disassemble your device, follow these instructions in reverse order, or look at our teardown guide [Free Wheelchair Mission GEN 1 Teardown](#)