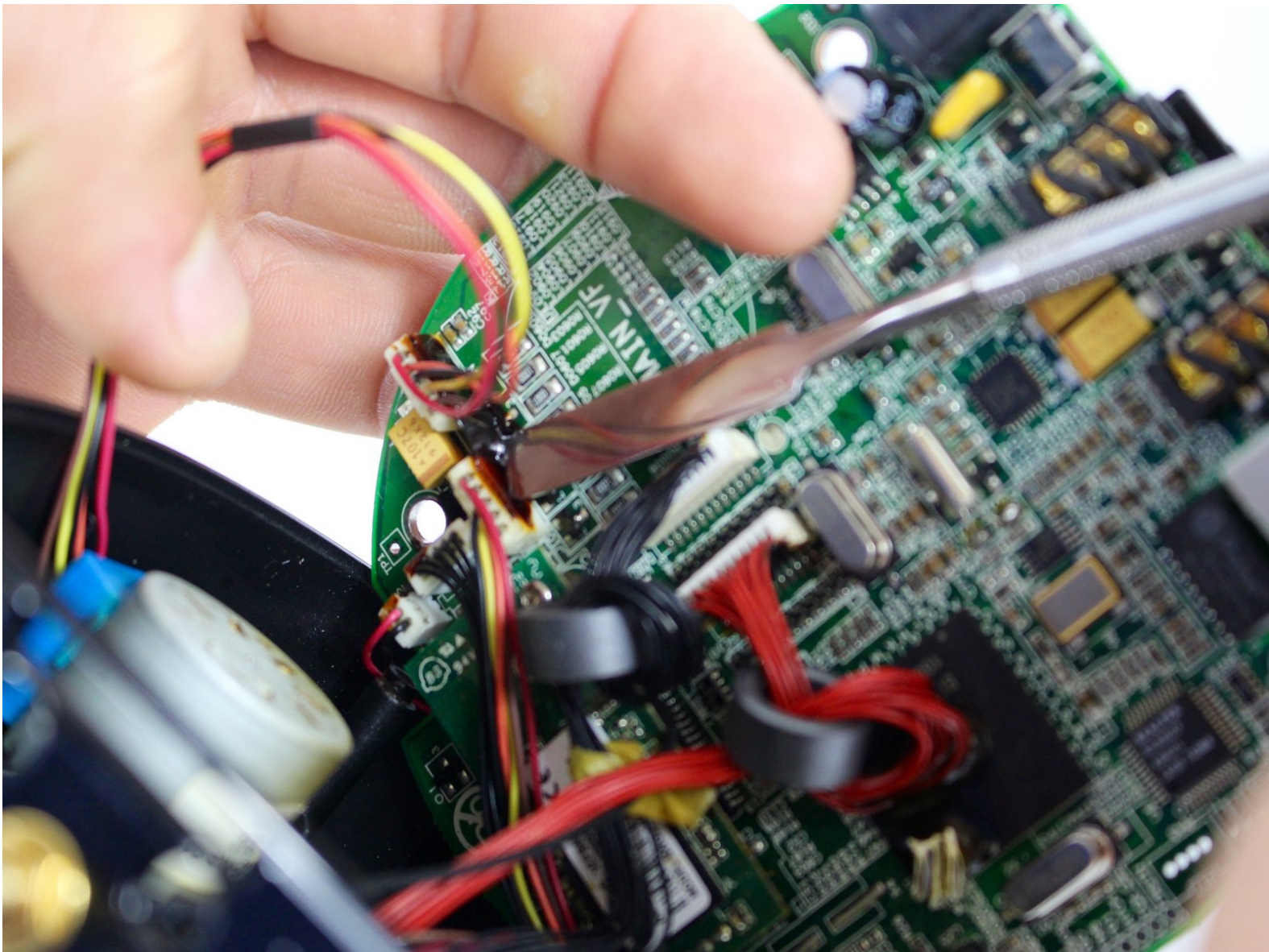




# Astak Mole Motherboard Replacement

Use this guide to replace the motherboard if it is determined that the wiring on the motherboard itself is faulty.

Written By: Andrew Birch



---

## INTRODUCTION

In order to replace the motherboard, you are going to have to access it first. After that, you will have to separate everything from the old motherboard and reconnect everything to the new motherboard.

---



### TOOLS:

- [Spudger](#) (1)
  - [Phillips #1 Screwdriver](#) (1)
-

## Step 1 — Lower Case



- Remove the four bottom tabs in order to access the bottom screws.

## Step 2



- Remove all four 14 mm Phillips #1 screws.

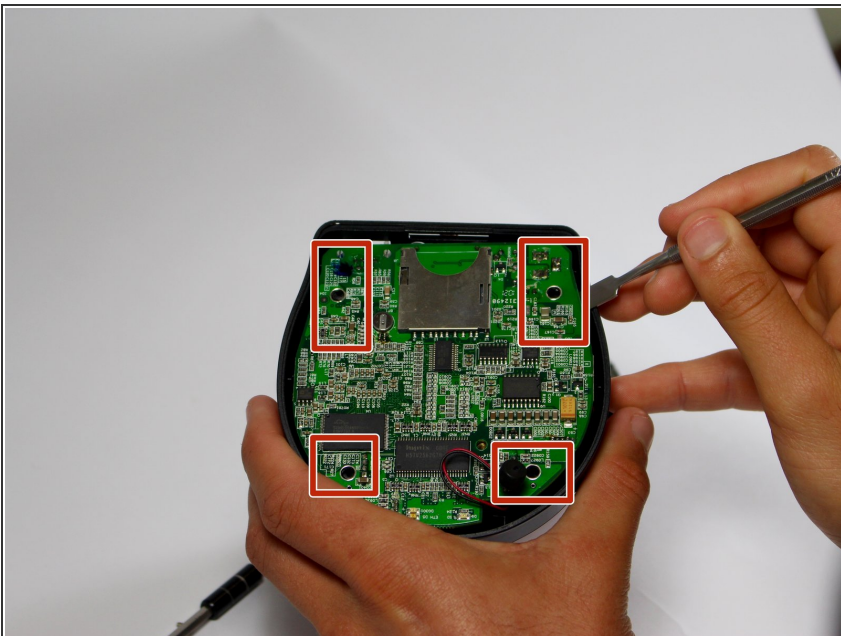


## Step 3



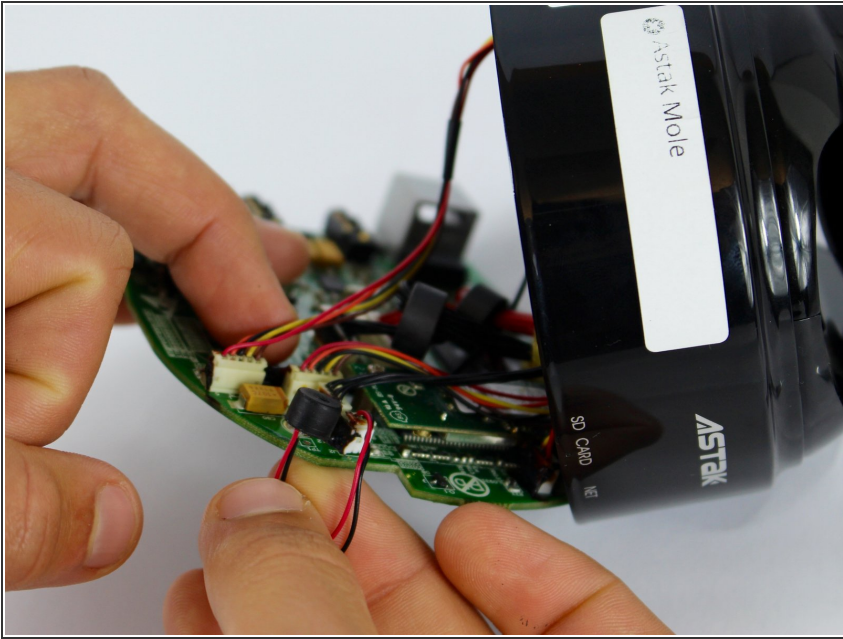
- Remove the SD card.

## Step 4



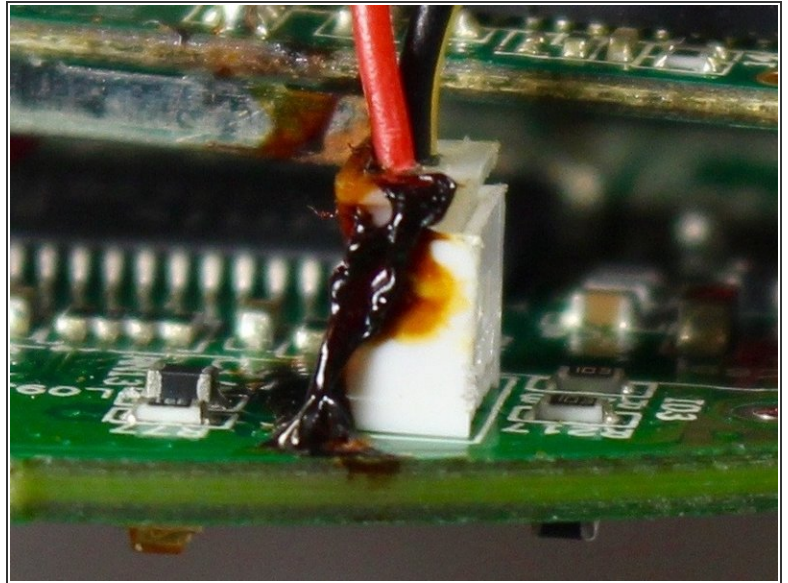
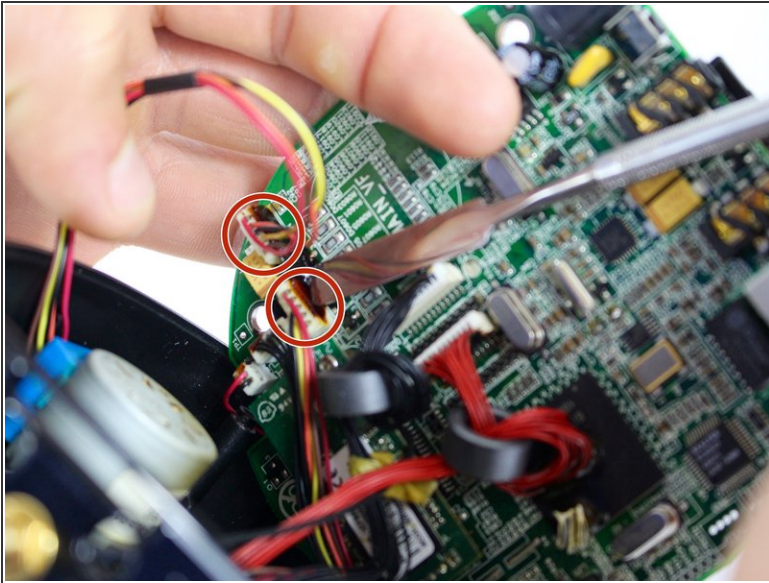
- Pry up the motherboard on the four points using a spudger.
- ⚠ The regular black nylon spudger should be used whenever possible, especially around sensitive internal components.

## Step 5



- Gently pull back the motherboard to expose many of the component's wired connections.

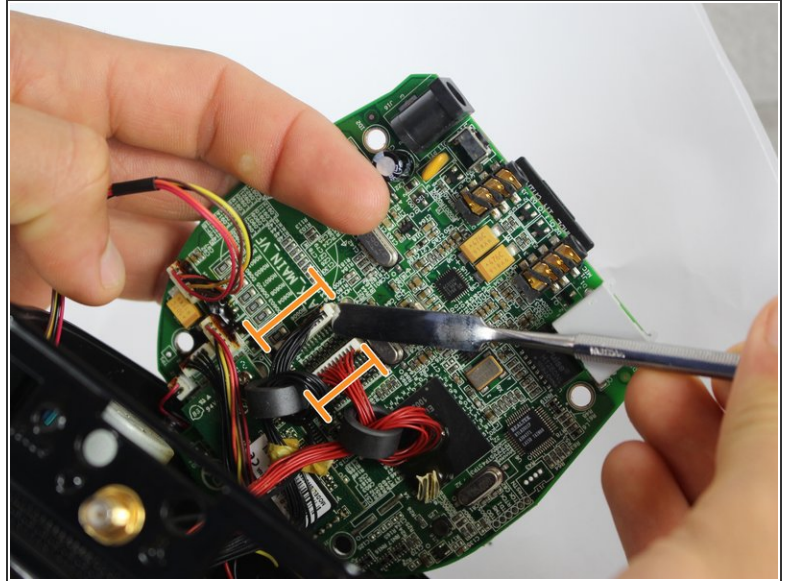
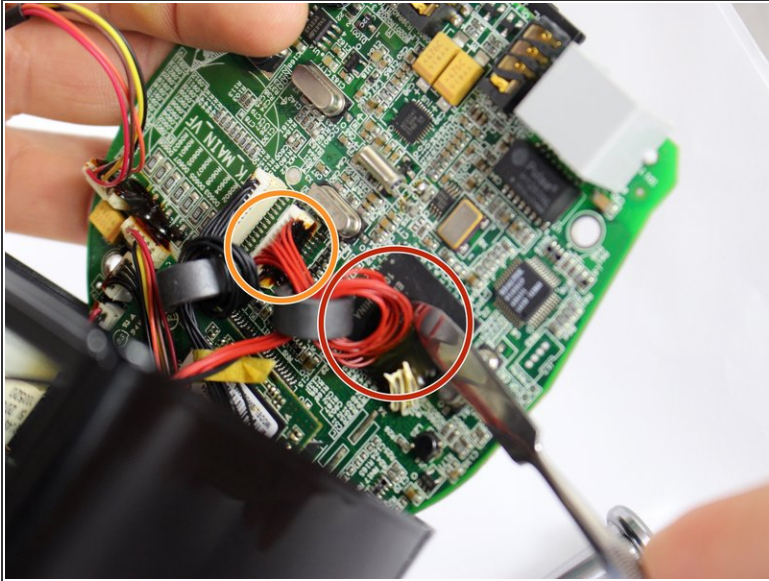
## Step 6 — Motherboard



- Sever the indicated adhesive connections to the motherboard allowing the wired connections to be removed.
- ⓘ All wired connections to the motherboard are removed by the thin plastic male connector inserted into the larger female plastic connection.
- ⚠ The regular black nylon spudger should be used whenever possible, especially around sensitive internal components.

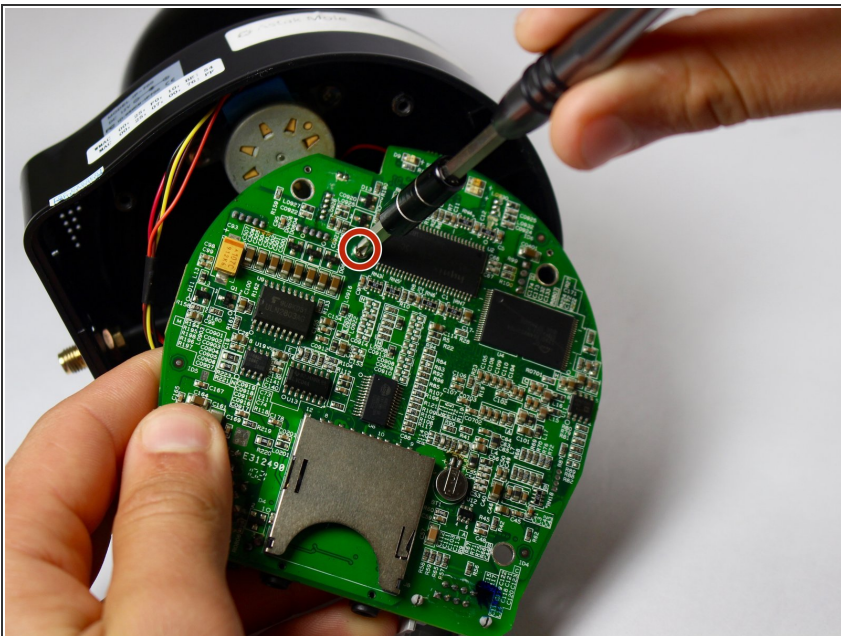


## Step 7



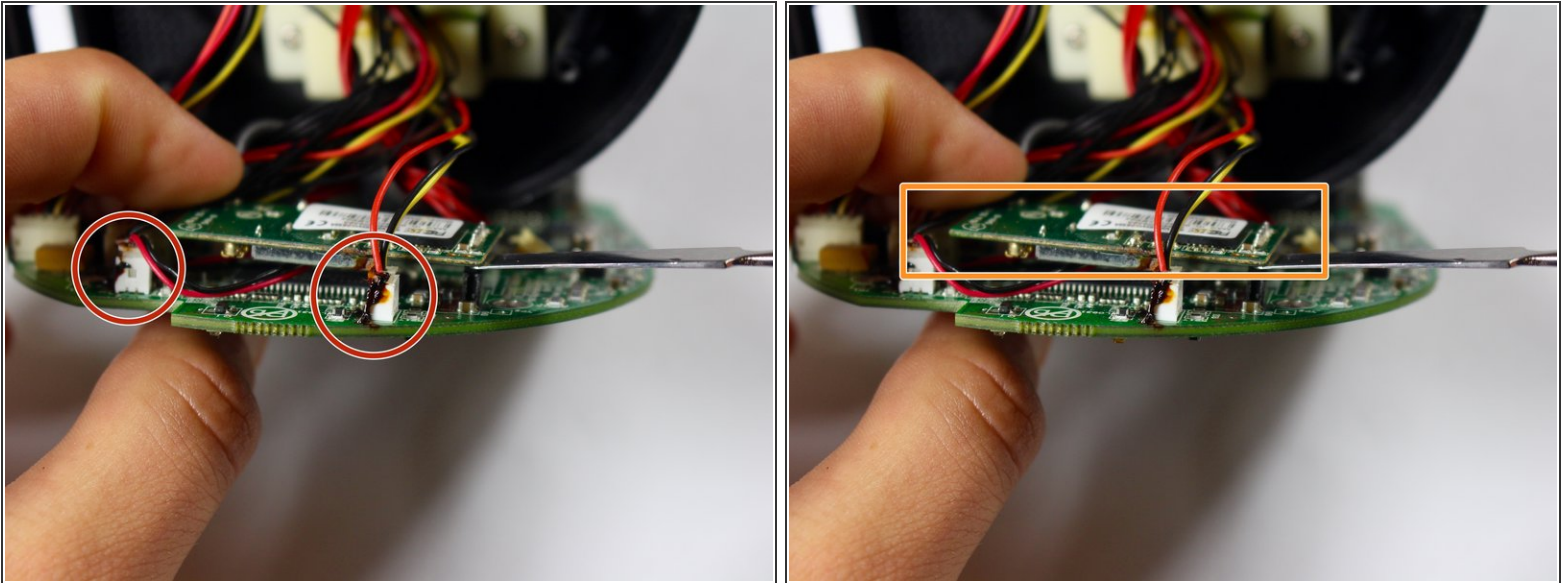
- The red wires may be adhered to the CPU as indicated and will need to be severed as shown.
- ⚠ Be careful not to scratch the CPU in this step. This is not a wired connection.
- Sever the additional adhesive connections so that the wired connections may be removed.


## Step 8



- Locate and unscrew the indicated screw using the (PH1) Phillips head bit.
- *Screw Measurements: (Length= 5.3mm)*

## Step 9



- Remove the last two wired connections to the motherboard by severing the indicated connections.
  - Lift up the secondary motherboard as indicated using the metal spudger.
  - All connections should be severed from the motherboard and a new motherboard may be inserted.
-  It is advised to reapply adhesive to wired connections during reassembly.

To reassemble your device, follow these instructions in reverse order.