



# Astro A20 Frame Replacement

Astro A20 Frame Replacement will be showing the steps on how to replace a damaged frame.

Written By: Jasmine Yarbrough



---

## INTRODUCTION

A damaged frame on an Astro A20 can be replaced easily with a 60 mm extension, Phillips #1 screwdriver, and a new frame.



### TOOLS:

- [Phillips #1 Screwdriver](#) (1)
-

## Step 1 — Frame



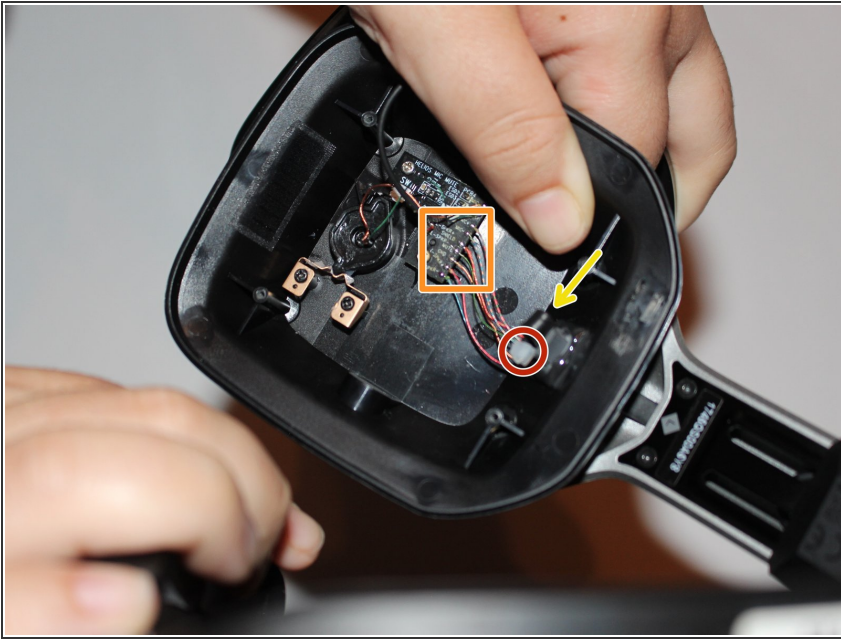
- Place your hand on the back of the speaker.

## Step 2



- Remove the four 7mm screws with a Phillips #1 screwdriver.
- ⓘ You may want to use a 60mm screwdriver extension to reach the screws inside of the headset.

### Step 3



- Lift the speaker.
- Disconnect the white connector from the device.
- Remove the wires connecting the frame shown by the yellow square.
- Pull the black cord through the hole shown by the blue arrow.

### Step 4



- Find the top 7mm J1 JIS head screws.
- Remove the two 7mm J1 JIS head screws with a J1 screwdriver bit connected to a 60mm extension.
- Pull the black cord through the frame.

To reassemble your device, follow these instructions in reverse order.