



Astro A40 Gen2 Mixamp Button Replacement

This guide will show you how to remove and replace the buttons on the mixamp.

Written By: Mark



INTRODUCTION

In this guide, we will be reaching and removing the buttons on the mixamp. This guide is helpful if you are looking to replace or fix a stuck the buttons on your own.

TOOLS:

- [Metal Spudger Set](#) (1)
 - [Phillips #0 Screwdriver](#) (1)
 - [Tweezers](#) (1)
-

Step 1 — Remove Dials



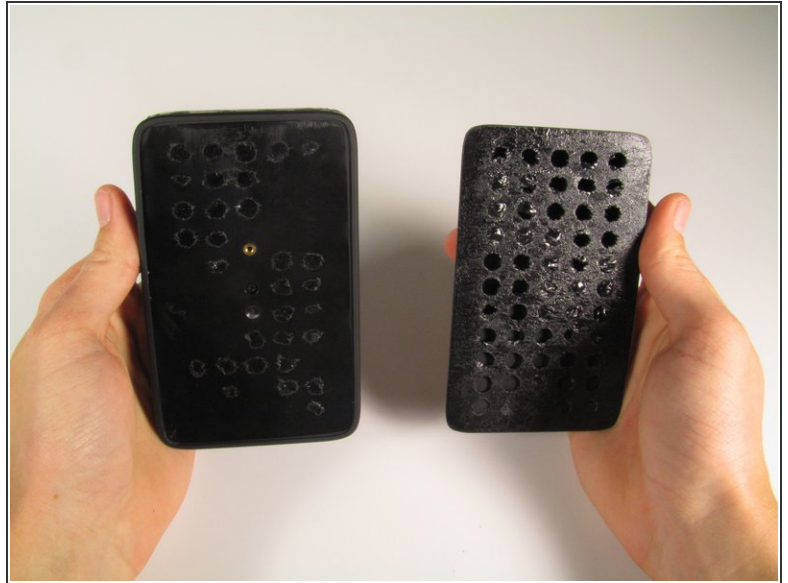
- Remove the dials using either a metal spudger or your hands. Be careful as the dials may be difficult to remove.

Step 2 — Remove nuts and washers.



- Locate the two 11/32 inch nuts underneath the dials.
- Use an 11/32 inch socket wrench or tweezers to unscrew and remove the nuts and washers.

Step 3 — Remove back pad.



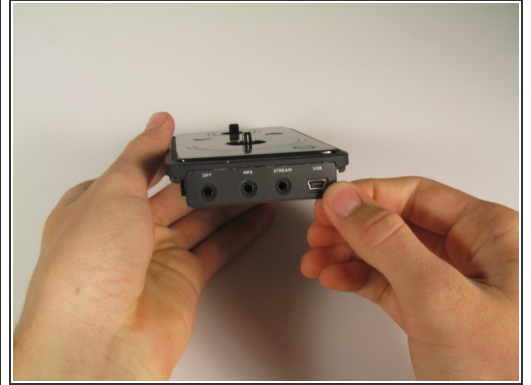
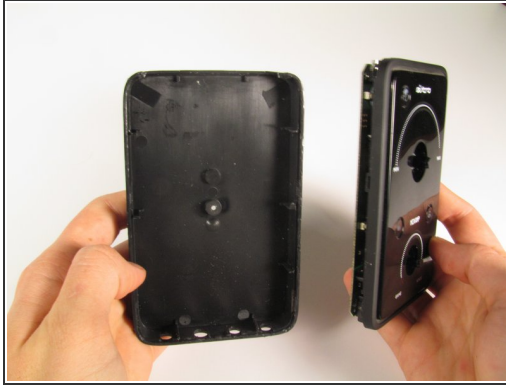
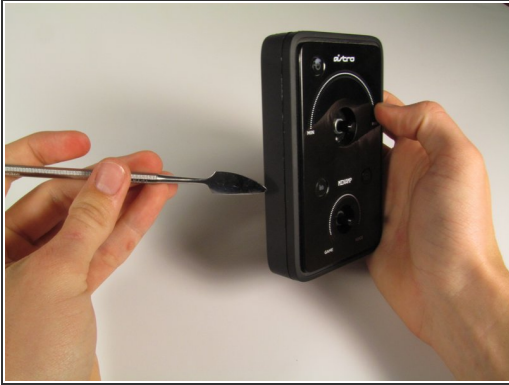
- Using a larger metal spudger, remove the rubber back of the mixamp.
- ⓘ The back will have glue residue after removal. Depending on the stickiness of the residue, more glue may be needed to stick the backing back on.

Step 4 — Take out main case screw.



- Remove the one 4.5 mm Phillips #0 screw on the back panel of the mixamp.

Step 5 — Pry open the case.

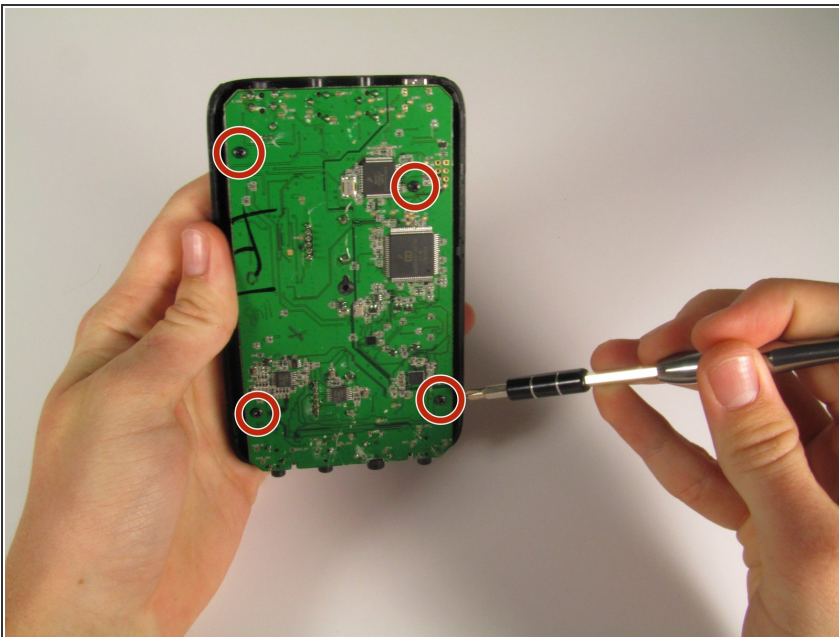


- Using a large metal spudger, detach all plastic clips holding the bottom and top casings together.
- Remove the input casing using your fingers.

⚠ Be careful when releasing the clips between the two casings, as it is very easy to scratch the mixamp or break the clips.

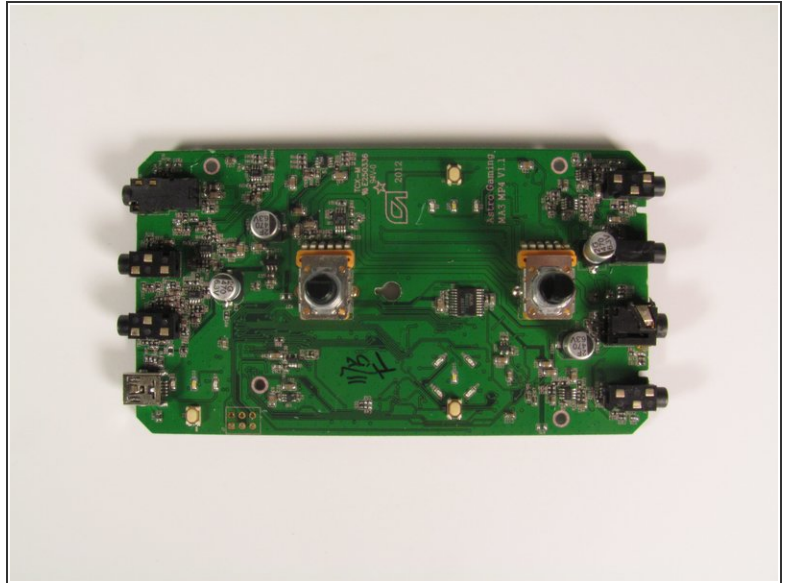
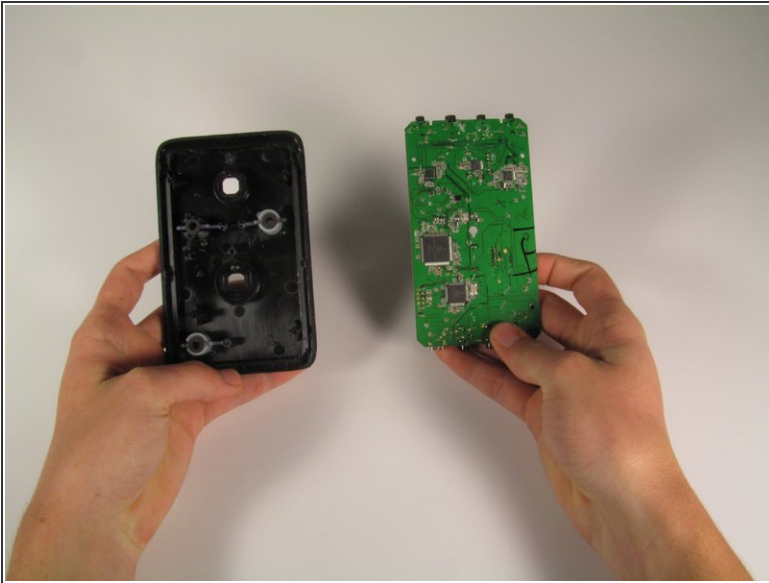
⚠ Use caution when pulling the two casings apart as it is very easy to pinch your fingers between them.

Step 6 — Remove the motherboard from the case.



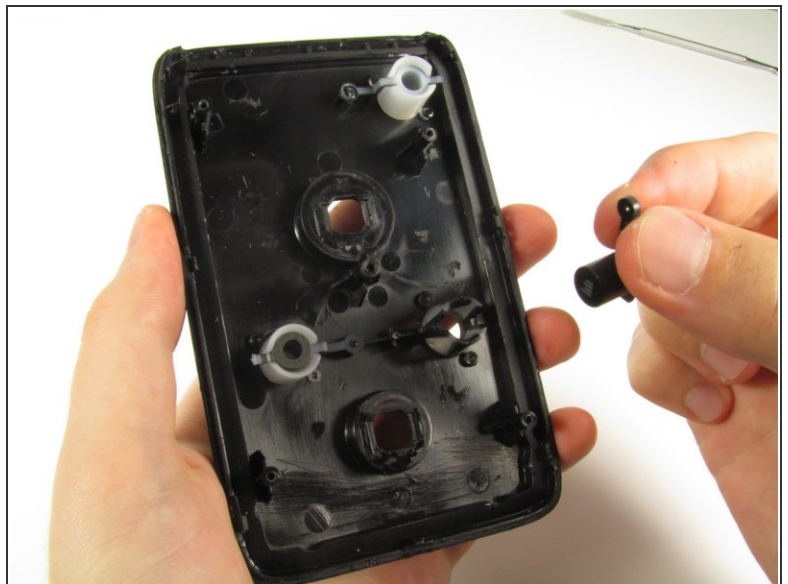
- Remove the four 5.8 mm Phillips #0 screws on the motherboard.

Step 7



- Remove the motherboard from the casing.

Step 8 — Mixamp Button



- Use a metal spudger to pry off the buttons and remove them.
- ⓘ You may need to apply pressure to break off the small black caps which hold the buttons down. The buttons will still function without the black caps.

To reassemble your device, follow these instructions in reverse order.