



Astro A50 Channel Selection Switch Replacement

This guide will show you how to take apart the Astro A50 head set and replace the channel selection switch.

Written By: William Czerwonka



INTRODUCTION

The guide allows for you to take apart and replace the channel selection switch on an Astro A50 gaming headset with only a Phillips head screwdriver.

TOOLS:

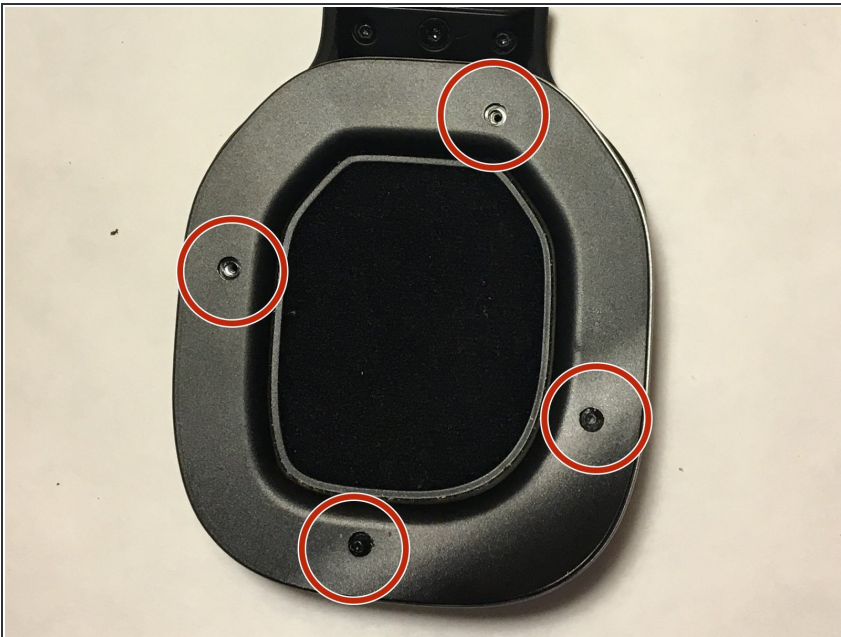
- [Phillips #0 Screwdriver](#) (1)
-

Step 1 — Channel Selection Switch



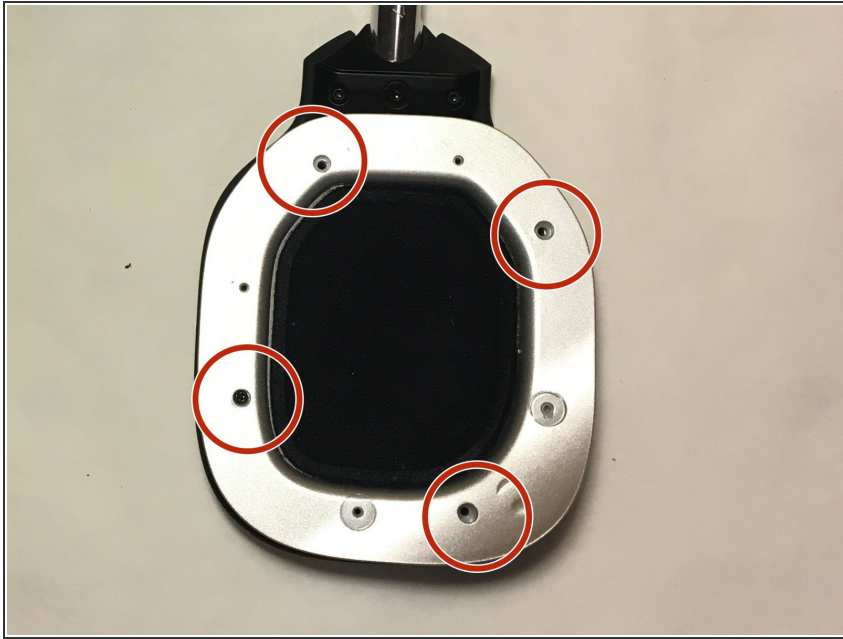
- Remove the foam ear padding by pulling it straight to you

Step 2



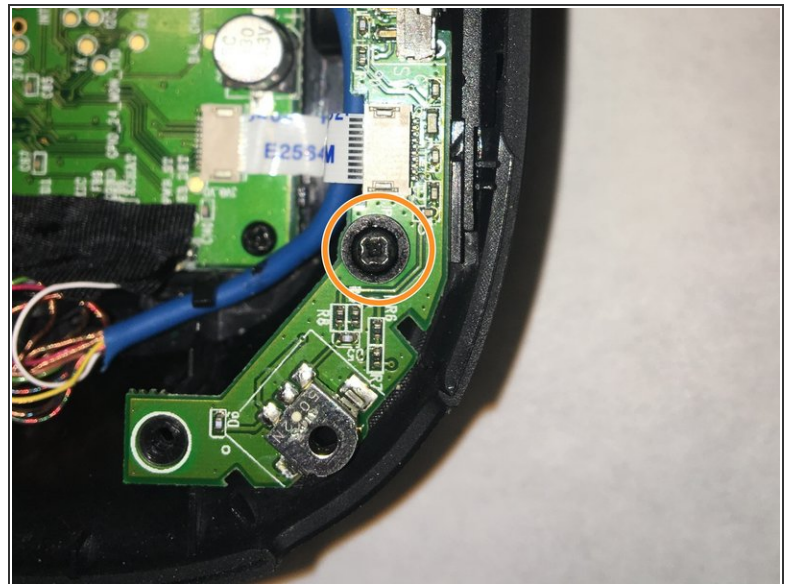
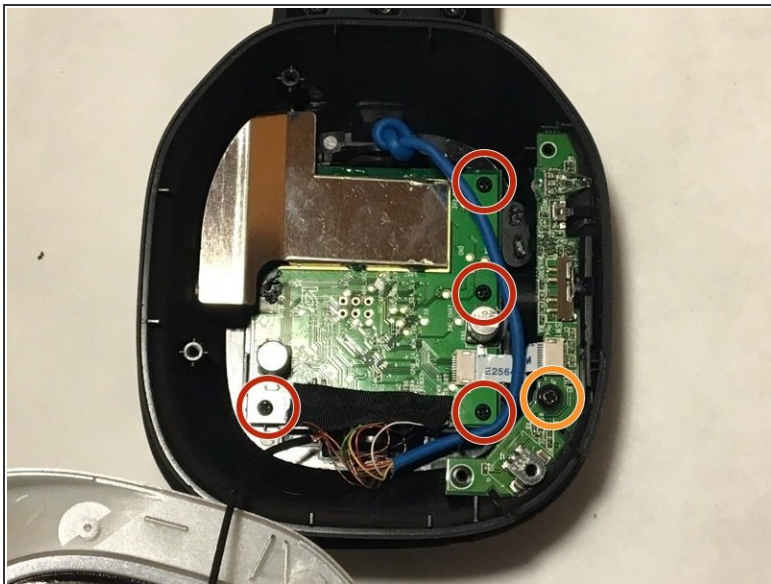
- Remove the four 3.5mm Phillips head screws circled in red, and remove the grey cover.

Step 3



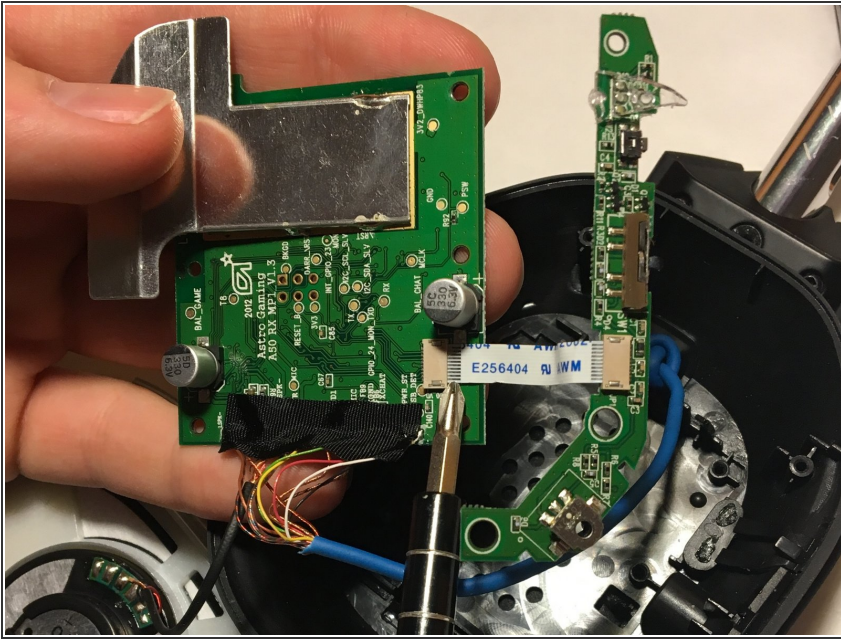
- Remove the four 3.5mm Phillips head screws circled in red and remove the silver cover.

Step 4



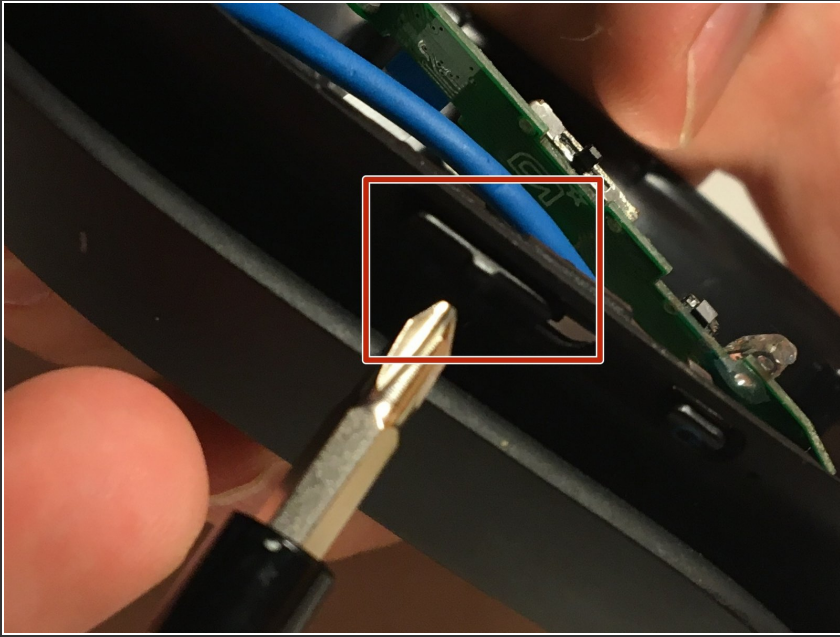
- Remove the four 3.5mm Phillips head screws.
- Remove the 3.5mm Phillips head screw circled in blue to remove secondary motherboard.

Step 5



- Separate the secondary mother board from the motherboard by pulling firmly to the right on the white connector.

Step 6



- Finally push the channel selector in towards the motherboard to remove it from the headset casing. The switch is pointed to by the screwdriver inside the red square.

To reassemble your device, follow these instructions in reverse order.