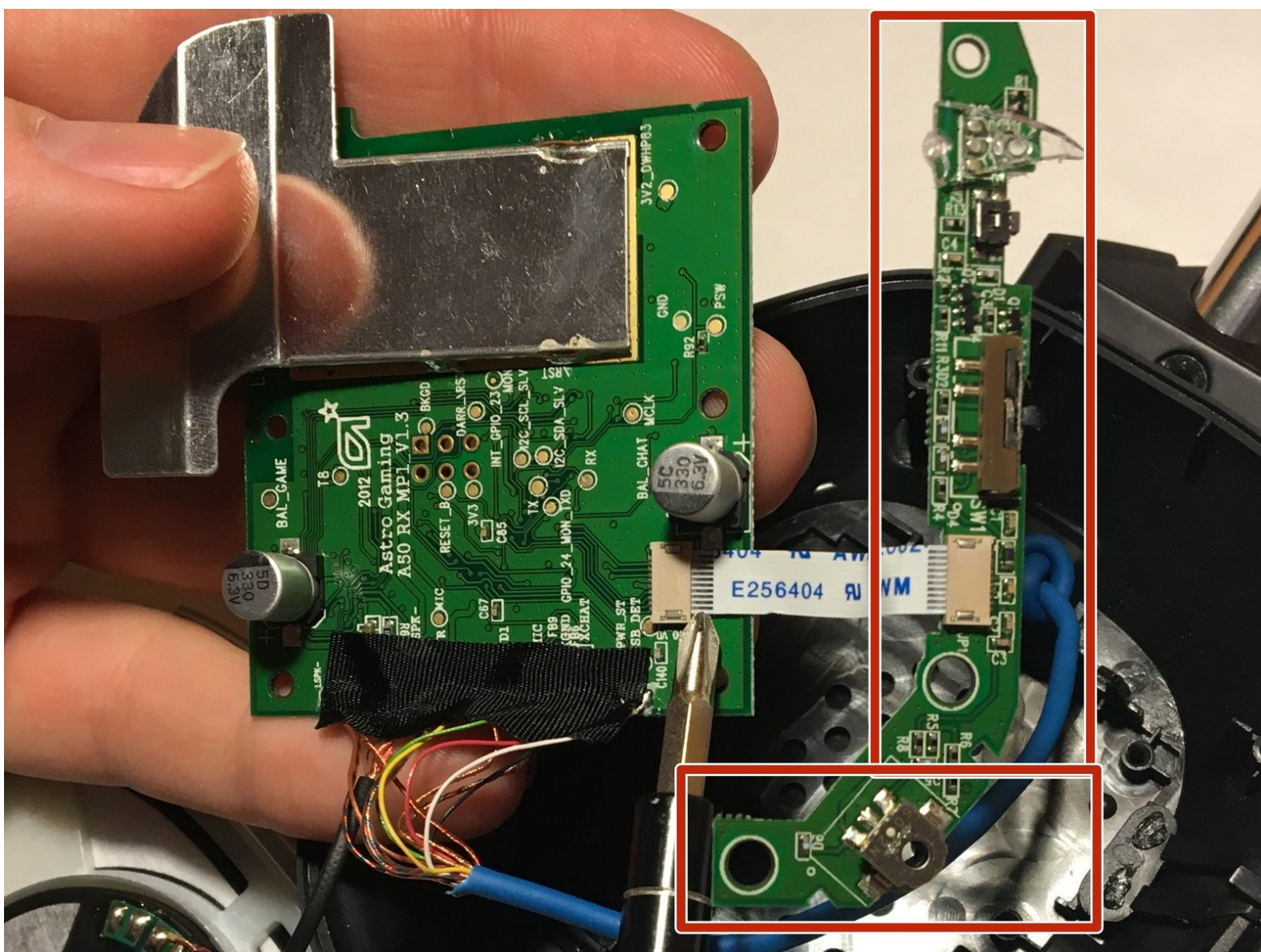




# Astro A50 Motherboard Replacement

This guide will show you how to take apart the Astro A50 head set and replace the secondary motherboard.

Written By: William Czerwonka



---

## INTRODUCTION

The guide allows for you to take apart and replace the channel selection switch on an Astro A50 gaming headset with only a Phillips head screwdriver.

---

### **TOOLS:**

- 1 x PH0 screw bit (1)
-

## Step 1 — Secondary Motherboard



- Remove the foam ear padding by pulling it straight to you

## Step 2



- Remove the four 3.5mm Phillips head screws circled in red, and remove the grey cover



### Step 3



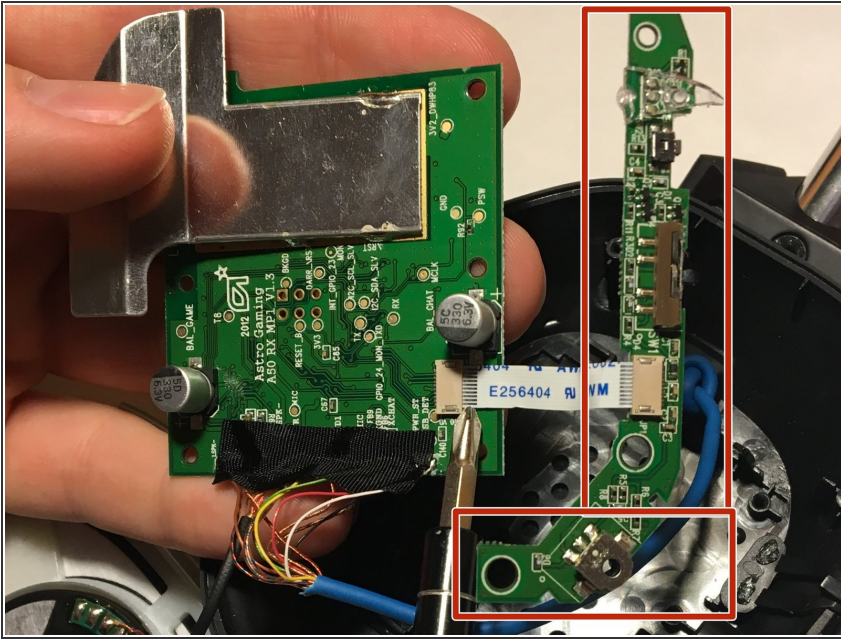
- Remove the four 3.5mm Phillips head screws circled in red and remove the silver cover.

### Step 4



- Remove the motherboard remove the four 3.5mm long Phillips head screws circled in red.
- Remove the 3.5mm Phillips head screw circled in blue to remove secondary motherboard.

## Step 5



- Separate the secondary motherboard from the motherboard by pulling firmly to the right on the white connector.

To reassemble your device, follow these instructions in reverse order.