



# Astro Pyle PTBL7C Battery Replacement

Replacing the old battery with a new one.

Written By: Abdulelah



# INTRODUCTION

Here are some instructions on how to change the old Battery of Astro Pyle PTBL7C and install a new one.

---

## TOOLS:

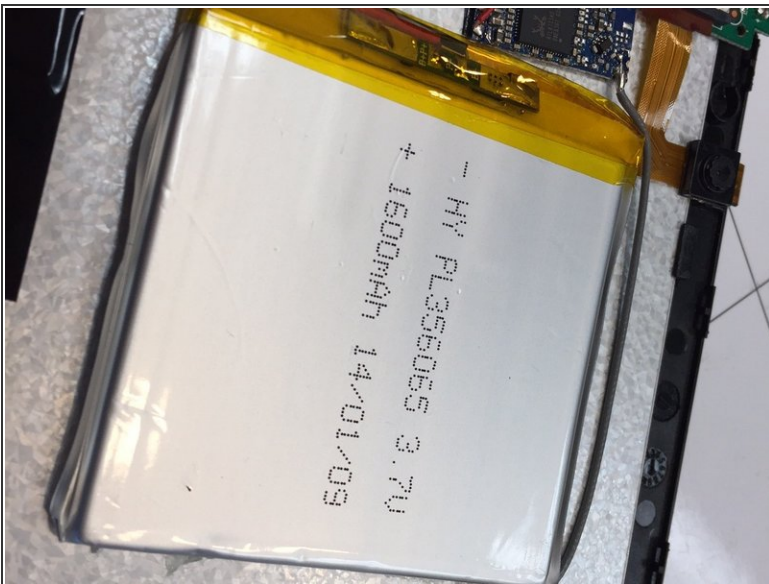
- [Spudger](#) (1)
  - [Soldering Iron](#) (1)
-

## Step 1 — Battery



- Use the spudger to open the device from the front edge of the screen. Gently slide it in and push it up to open.
- ⓘ It may emit a cracking sound at it opens; this is only the locks coming apart.

## Step 2



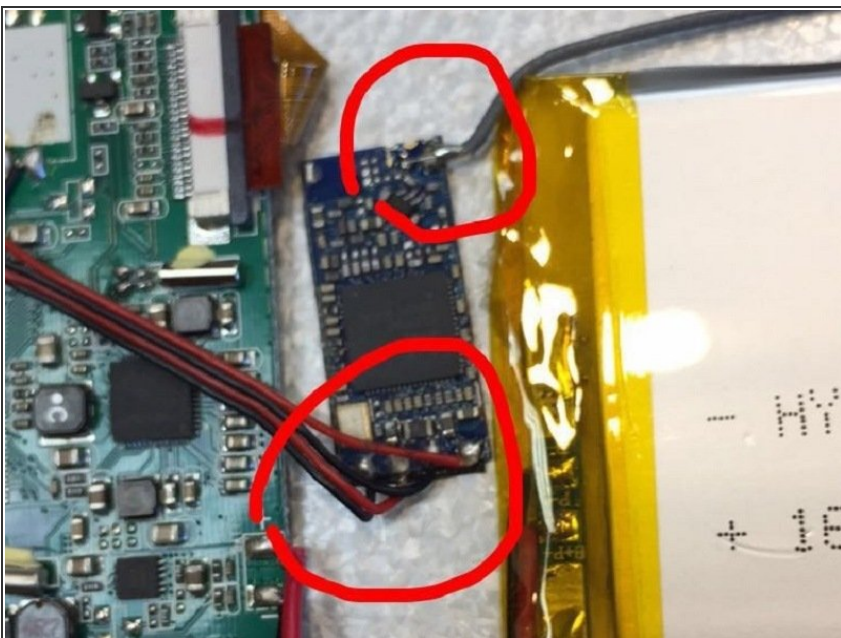
- The battery will appear as pictured. Separate the back case from the device. Avoid damaging the wire that connects the speakers between the two halves of the case.

### Step 3



- The battery is attached in two different ways; one wire is attached to the screen to support the screen's background led lights. Carefully desolder the wire without damaging the part connecting the battery to the screen.

### Step 4




- Desolder the wires pictured. These feed energy from the battery into the motherboard.
- ⚠ Use caution to avoid damaging the motherboard or other critical pieces.

## Step 5



- Use a plastic card to gently break the adhesive holding the battery to the metal screen plate. Remove the battery.

 Though non-functional, the battery still contains dangerous chemicals. Handle it directly as little as possible.

## Step 6



- Install the new battery and solder all the connections back in place.
- ① Visit this guide for more information on soldering and desoldering: [iFixit Soldering Guide](#)

To reassemble your device, follow these instructions in reverse order.