



Asus A52F Hard drive Replacement

This guide will show you how to access, identify, and replace a broken hard drive.

Written By: Roman Justice





TOOLS:

- [Phillips #0 Screwdriver](#) (1)
 - [Spudger](#) (1)
-

Step 1 — Battery



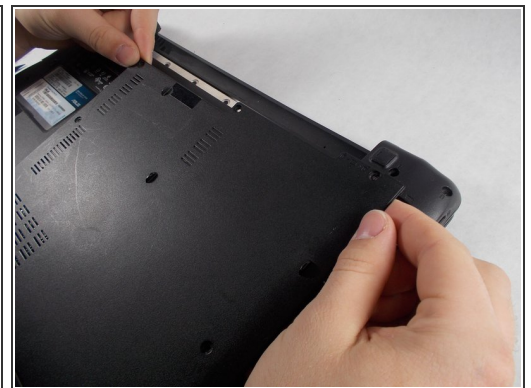
- Place the laptop face down with the battery facing away from you.
- Locate the two buttons next to the battery.
- Slide the right slider to the unlocked (red) position.

Step 2



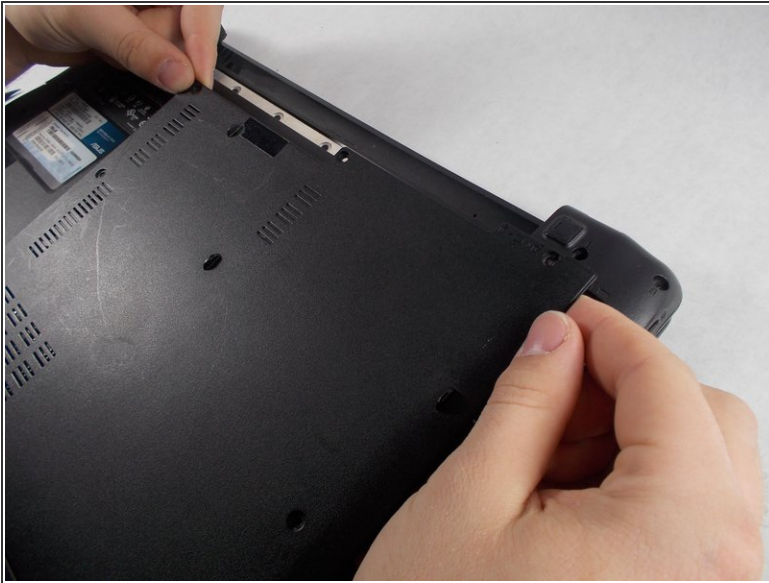
- Hold the left button to the left.
- Slide the battery with your other hand away from you and it should disconnect.

Step 3 — Lower Case



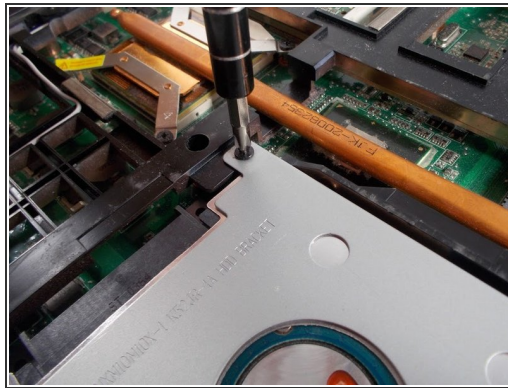
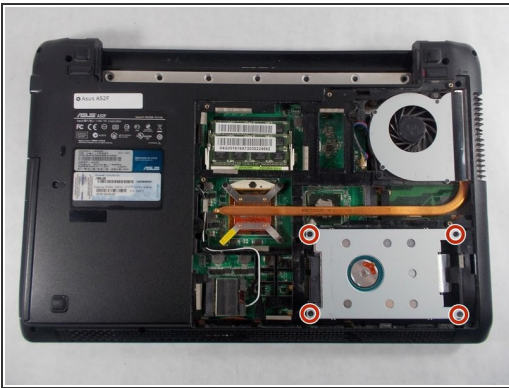
- Remove the five Phillips # 0 screws from the back panel.
- Using your finger or a plastic spudger start to carefully pry up the back panel.

Step 4



- Slide the back panel away and remove the panel.

Step 5 — Hard drive



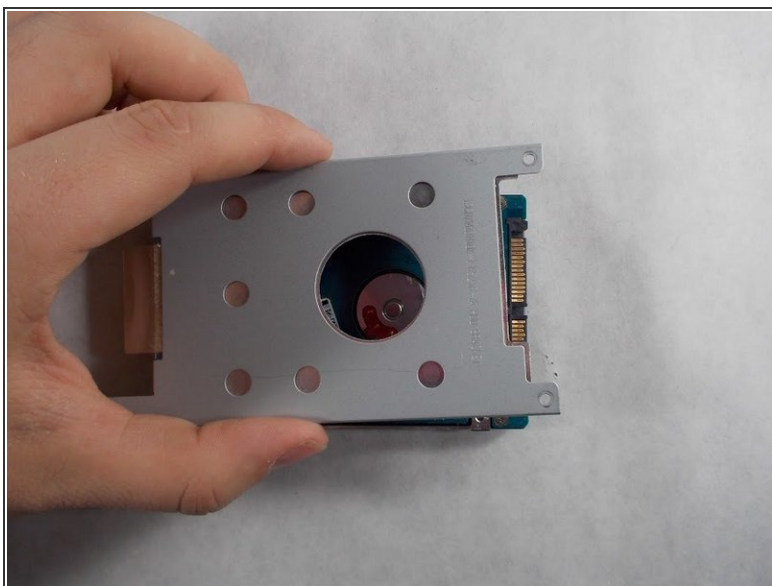
- Remove the four Phillips #0 screws holding the hard drive case to the laptop.
- Lift the hard drive upwards by the two arms in order to remove the hard drive case from the laptop.

Step 6



- Using a Phillips #0 screwdriver, remove the cage screws on the side of the hard drive.

Step 7



- Next, slide the case off of the broken hard drive.
- Slide the working hard drive into the case and screw it on.

To reassemble your device, follow these instructions in reverse order.