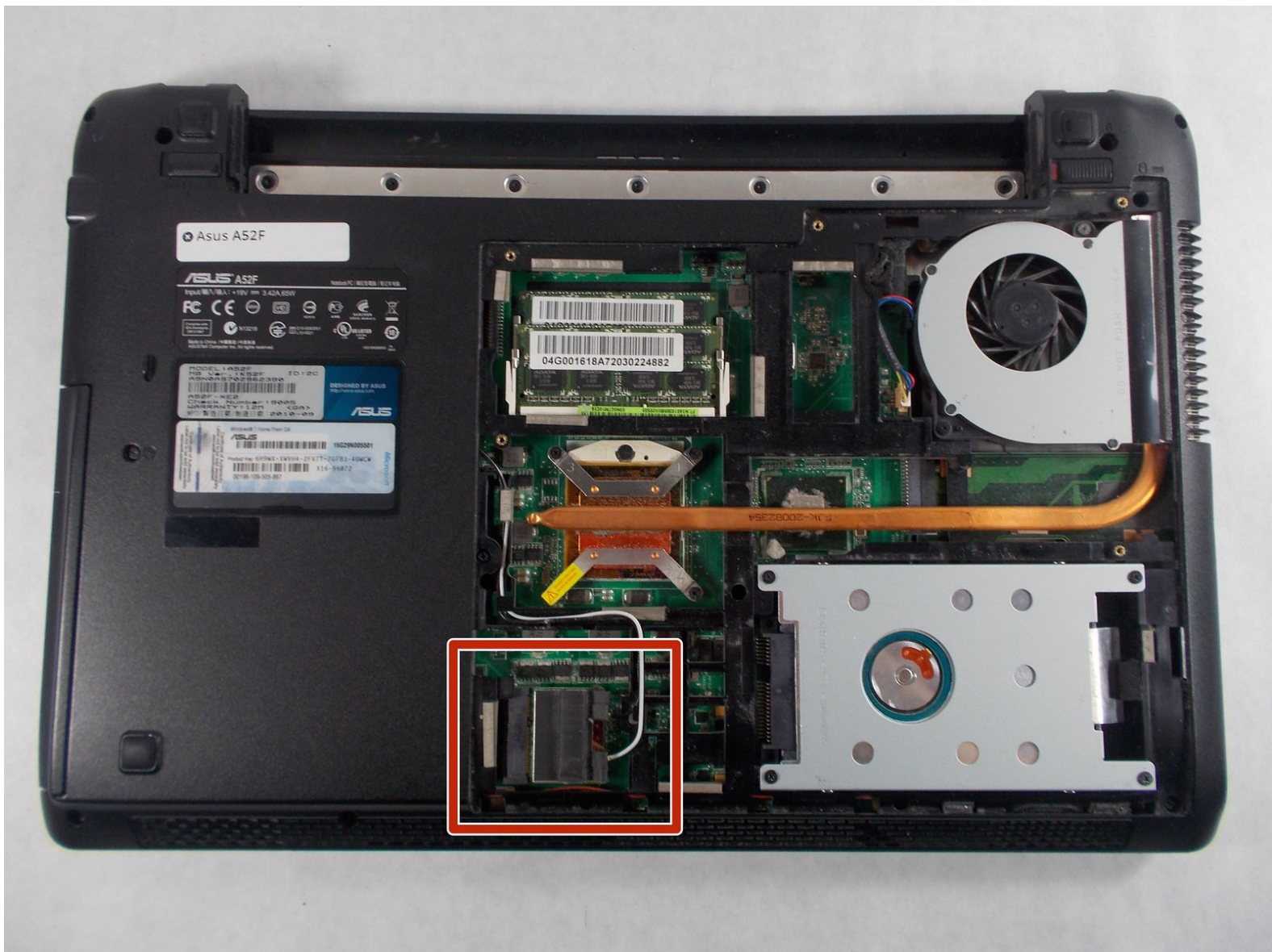




Asus A52F Wifi Card Replacement

This guide will show you how to access, identify, remove, and replace the WiFi card.

Written By: Roman Justice



INTRODUCTION

This guide will teach you how to open the laptop with a screwdriver, identify and safely remove the broken WiFi card, and replace it with a working one.

TOOLS:

- [Phillips #0 Screwdriver](#) (1)
 - [Spudger](#) (1)
 - [Anti-Static Wrist Strap](#) (1)
-

Step 1 — Battery



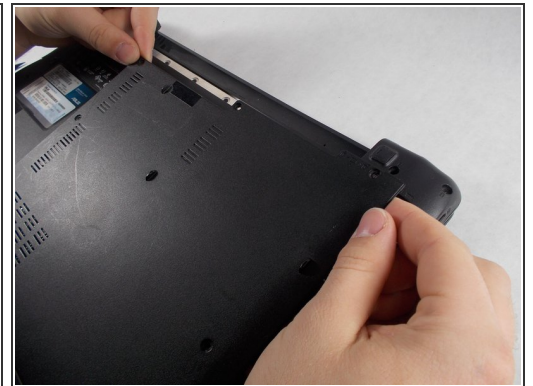
- Place the laptop face down with the battery facing away from you.
- Locate the two buttons next to the battery.
- Slide the right slider to the unlocked (red) position.

Step 2



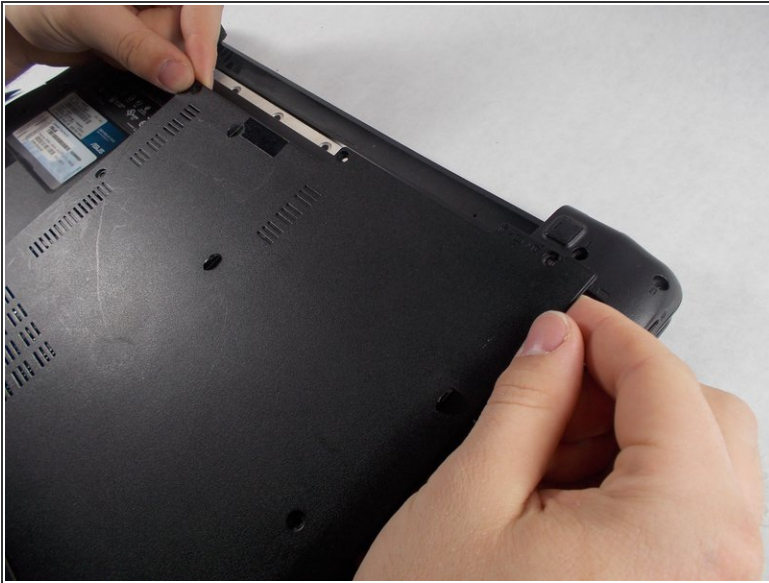
- Hold the left button to the left.
- Slide the battery with your other hand away from you and it should disconnect.

Step 3 — Lower Case



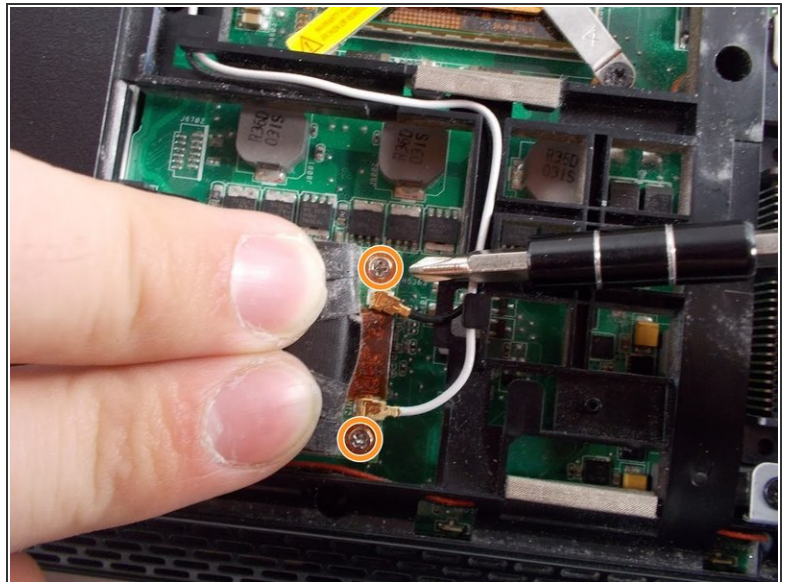
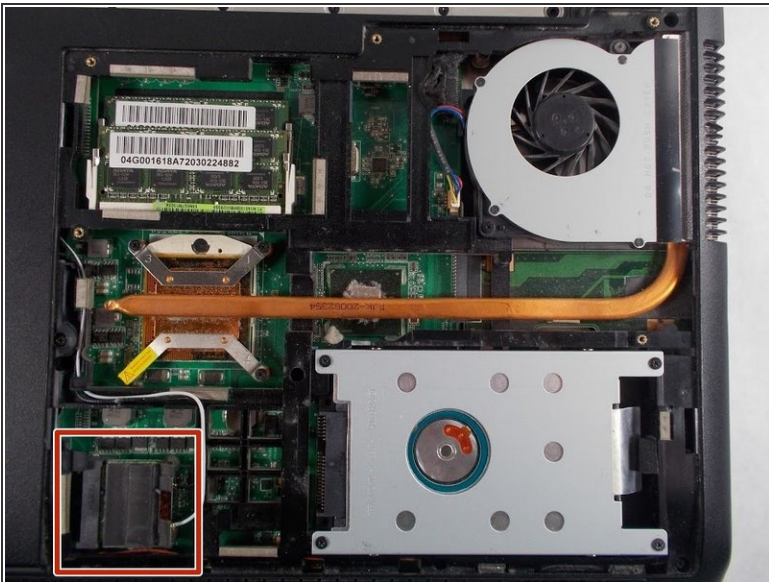
- Remove the five Phillips # 0 screws from the back panel.
- Using your finger or a plastic spudger start to carefully pry up the back panel.

Step 4



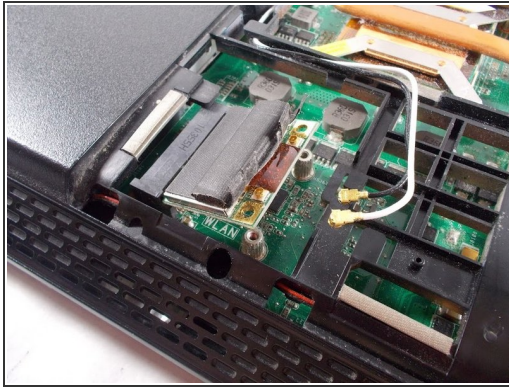
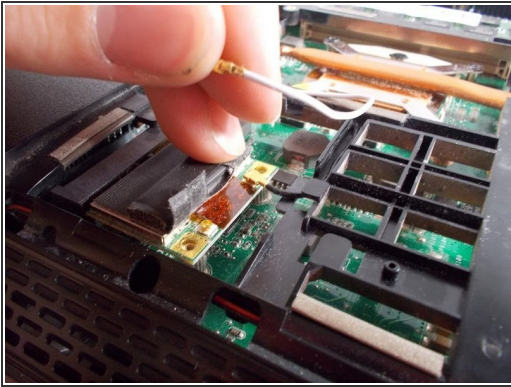
- Slide the back panel away and remove the panel.

Step 5 — Wifi Card



- First, find the Wi-Fi card
- Move the protective flap back and use a Phillips size 0 screw driver to remove the two screws.

Step 6



- First remove both of the wires from the WiFi card.
- Lift the WiFi card up and remove it.

To reassemble your device, follow these instructions in reverse order.