



# Asus A52F XE2 Lower Case Replacement

Remove the lower case of the ASUS A52F XE2 to gain access to internal parts.

Written By: Michael Benson



---

## INTRODUCTION

Remove the lower case of the ASUS A52F XE2 to gain access to internal parts.

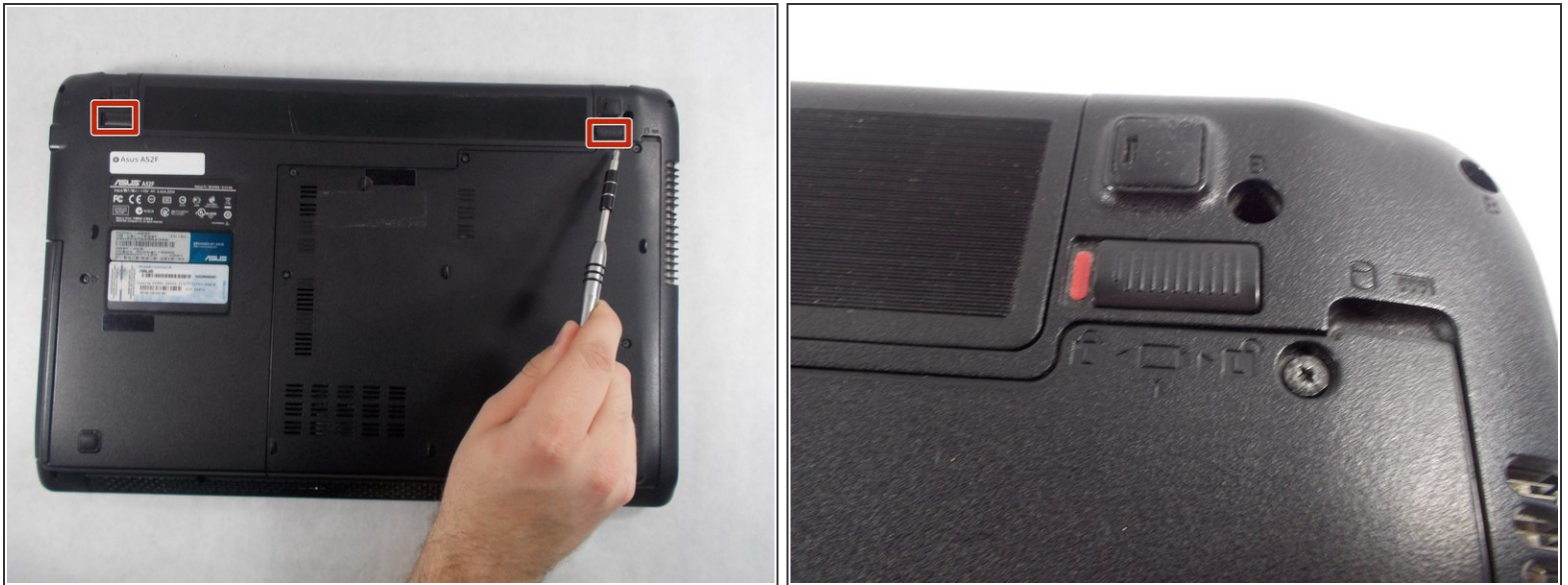
---



### TOOLS:

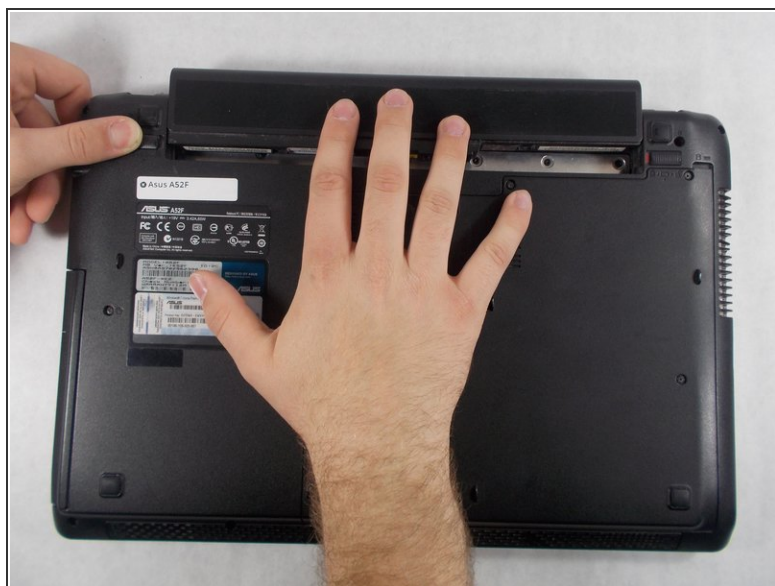
- [Phillips #0 Screwdriver](#) (1)
  - [Spudger](#) (1)
-

## Step 1 — Battery



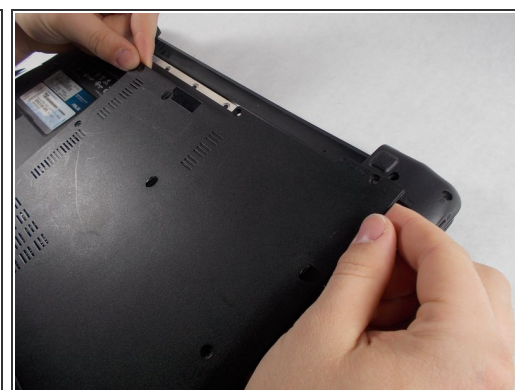
- Place the laptop face down with the battery facing away from you.
- Locate the two buttons next to the battery.
- Slide the right slider to the unlocked (red) position.

## Step 2



- Hold the left button to the left.
- Slide the battery with your other hand away from you and it should disconnect.

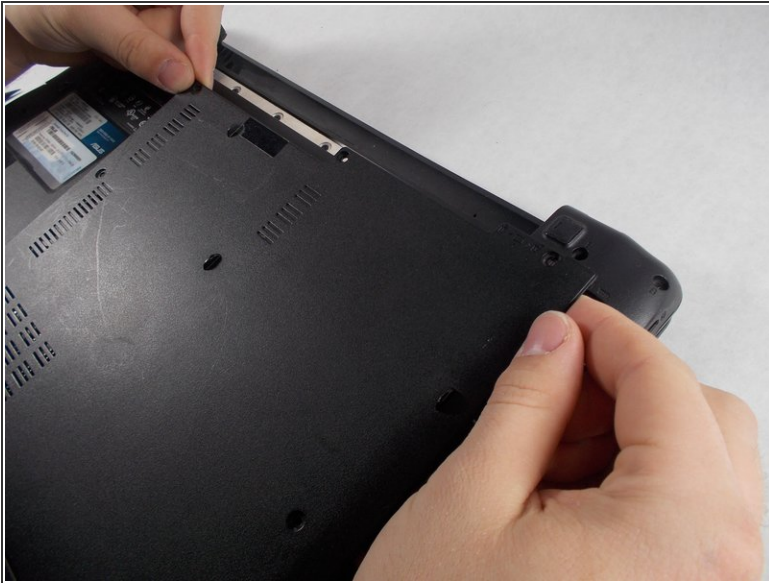
## Step 3 — Lower Case



- Remove the five Phillips # 0 screws from the back panel.
- Using your finger or a plastic spudger start to carefully pry up the back panel.



## Step 4



- Slide the back panel away and remove the panel.

To reassemble your device, follow these instructions in reverse order.