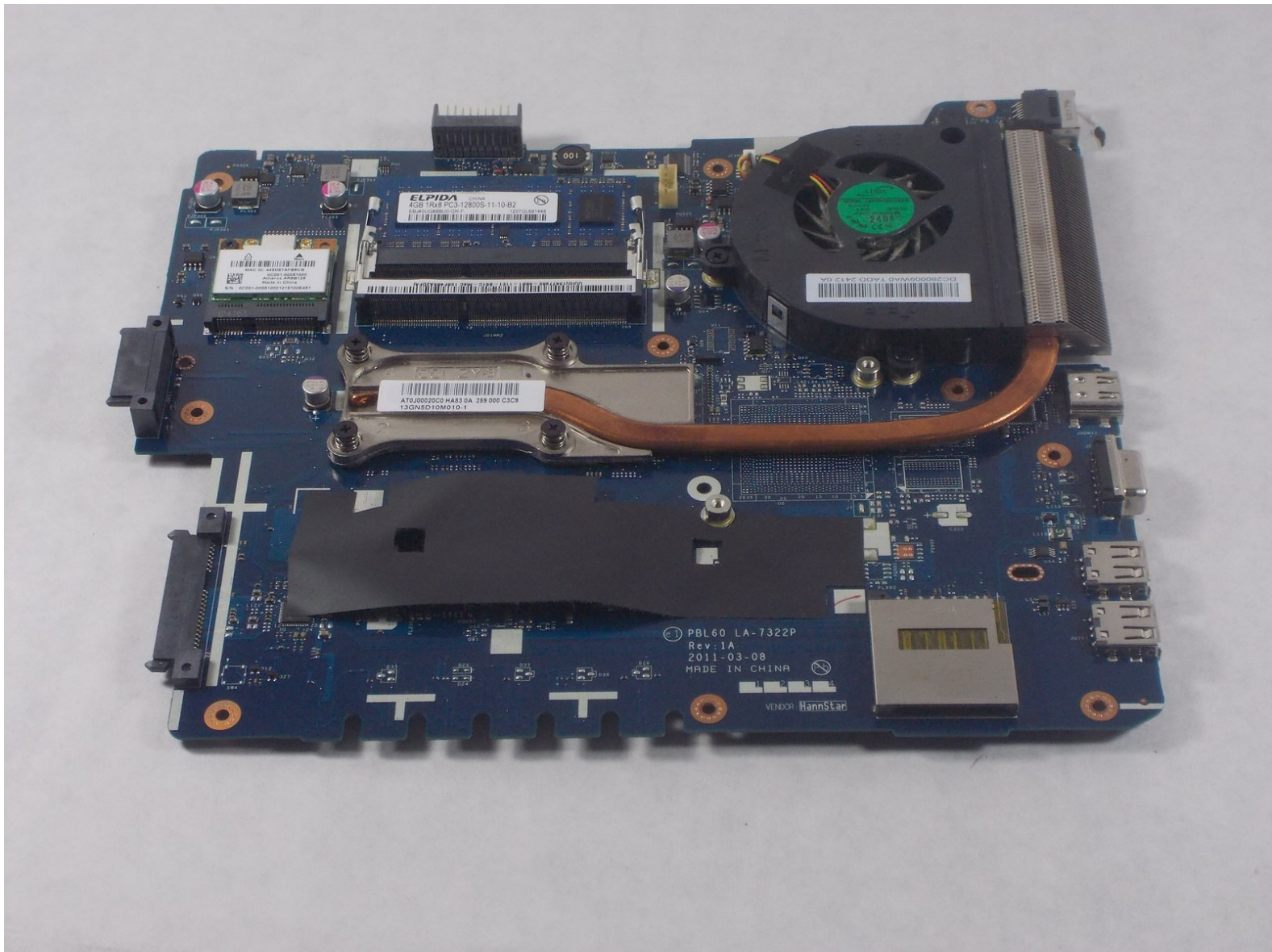




Written By: Chase Poirier



Page 1 of 9

INTRODUCTION

Is your computer experiencing problems with loading or booting up? Consider using this guide to replace the motherboard of your device.




TOOLS:

- [Phillips #1 Screwdriver](#) (1)
 - [iFixit Opening Tools](#) (1)
-

Step 1 — Battery



 Make sure the laptop is off.

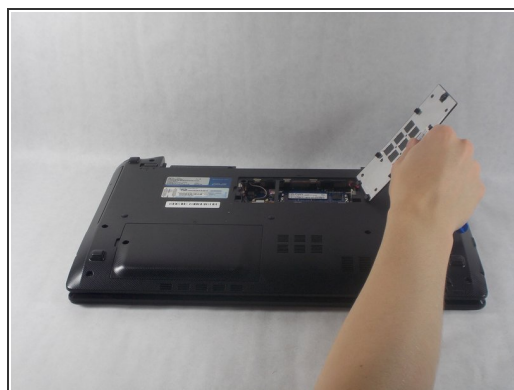
- Flip the laptop upside down so that the battery is facing you.

Step 2



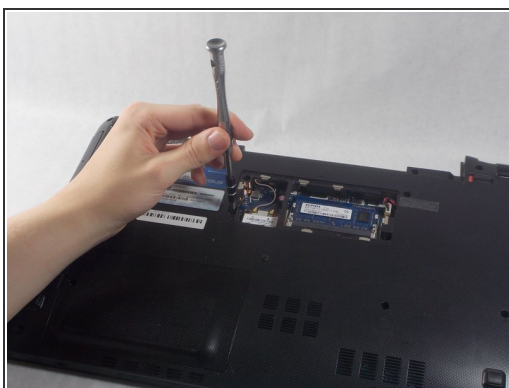
- Move the two sliders towards the outer edge of the laptop.
- Pull the battery out with your left hand while holding the right slider.

Step 3 — Optical Drive



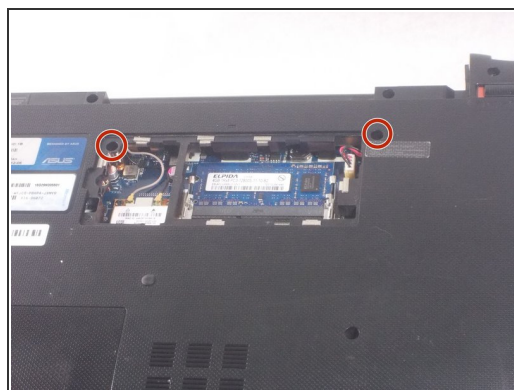
- Remove the 5mm screw using a Phillips #1 screwdriver.
- Use the iFixit opening tools to remove the RAM panel.

Step 4



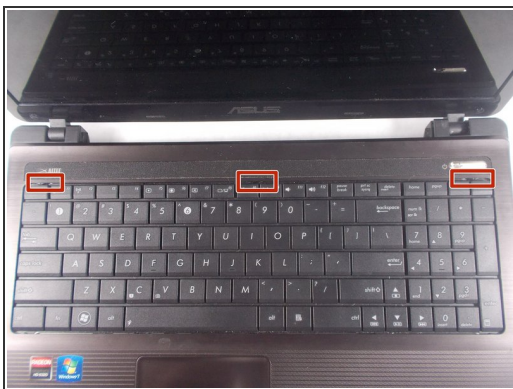
- Remove the 7mm screw using a Phillips #1 screwdriver.
- Pull the optical drive out from the side of the laptop.

Step 5 — Keyboard



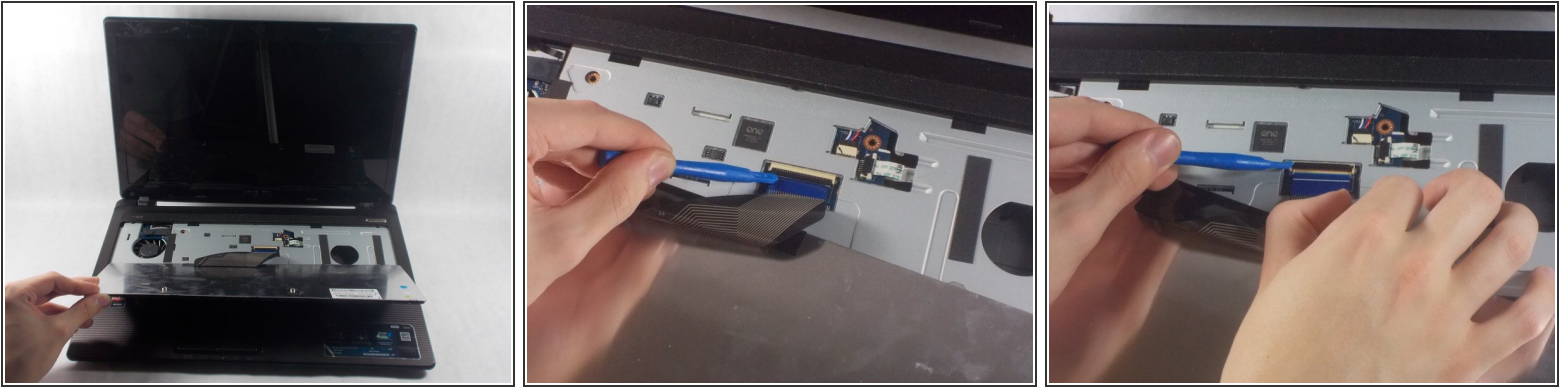
- Remove the RAM cover from the bottom of the keyboard.
- Remove the 5mm screw keeping the panel in place using a Phillips #1 screwdriver.
- Work the pry tool along the edge to finish removal.
- Unscrew the two 7mm screws marked with an engraved "K" using a #1 Phillips screwdriver.

Step 6



- Orient the computer so the keyboard is facing toward you with the screen at the top.
- Find the three buttons to depress at top of the keyboard, set in the crack between the casing and the keyboard, highlighted here in red.
- Use the pry tool to depress the buttons. The keyboard should pop out.

Step 7



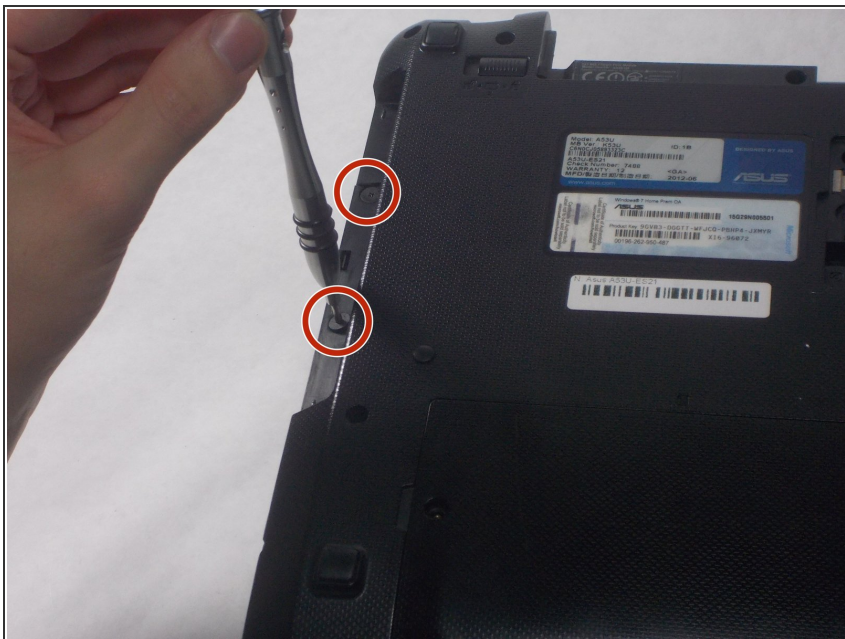
- Fold the keyboard out towards you. It should still be connected by a ribbon to the rest of the computer.
 - Gently use the opening tool to lift the black piece holding the ribbon down and remove the ribbon.
- ☑ The black piece should cover the white line on the ribbon when it is replaced.

Step 8 — Motherboard



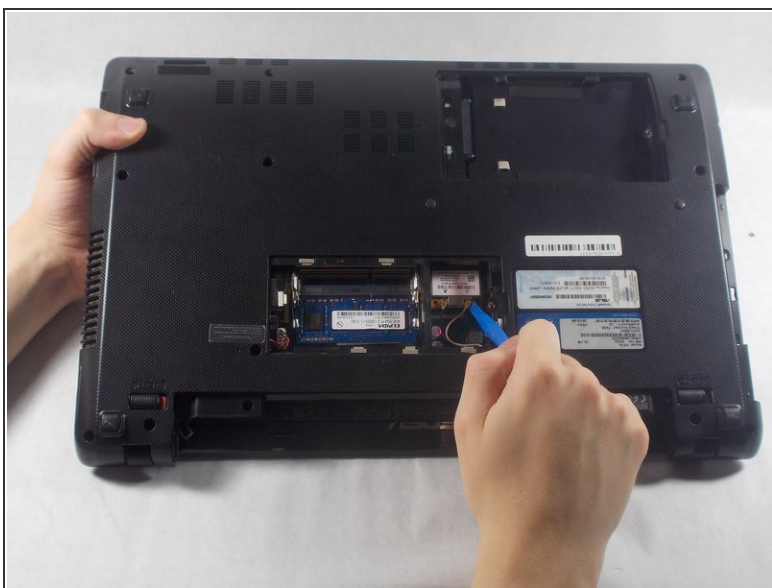
- Close the laptop and place it upside down.
- Remove the twelve 7mm screws using a Phillips #1 screwdriver.

Step 9



- Remove the two 2mm screws using a Phillips #1 screwdriver.

Step 10



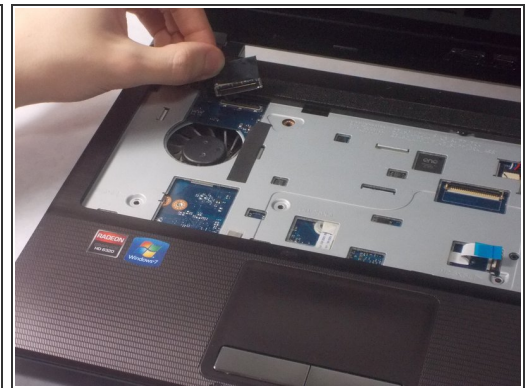
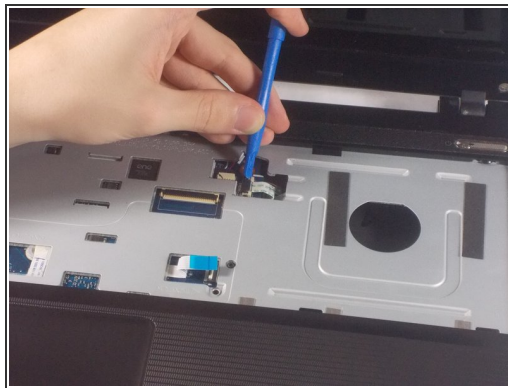
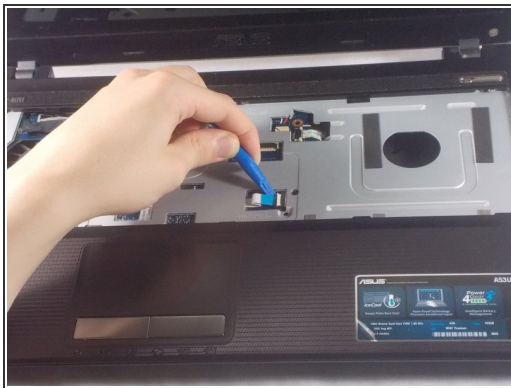
- Pull the connectors away from the wireless card using the plastic opening tools.
- Pull the white connector from its socket in the RAM panel.

Step 11



- Flip the laptop over again, open it, and unscrew the three 7mm screws using a Phillips #1 screwdriver.

Step 12



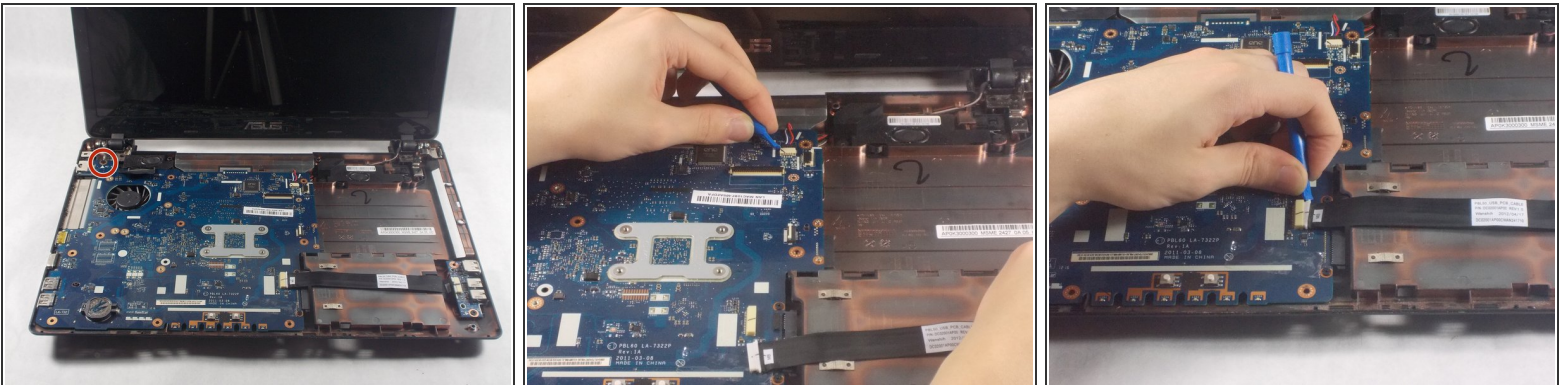
- Gently pull the tan flap off of the cable using the plastic opening tool.
- Push the tan piece towards the cable and release it using the plastic opening tool.
- Pull the black flap off of its connector.

Step 13



- Separate the front plate of the laptop from the back using the plastic opening tool.

Step 14



- Remove the single 7mm screw from the motherboard using a Phillips #1 screwdriver.
- Pull to two shown cables from their sockets using the plastic opening tools.
- Gently remove the motherboard from the laptop.

To reassemble your device, follow these instructions in reverse order.