



Asus CM1745 CD Drive Replacement

Partial desktop teardown and replacement of faulty CD Drive.

Written By: TC Fowlar



INTRODUCTION

This replacement guide requires working on the internals of the desktop. This could void any remaining warranty.

This guide also requires close-proximity to exposed electronics. Please ensure that the PC is both powered off and disconnected from the wall.



TOOLS:

- [Phillips #0 Screwdriver](#) (1)



PARTS:

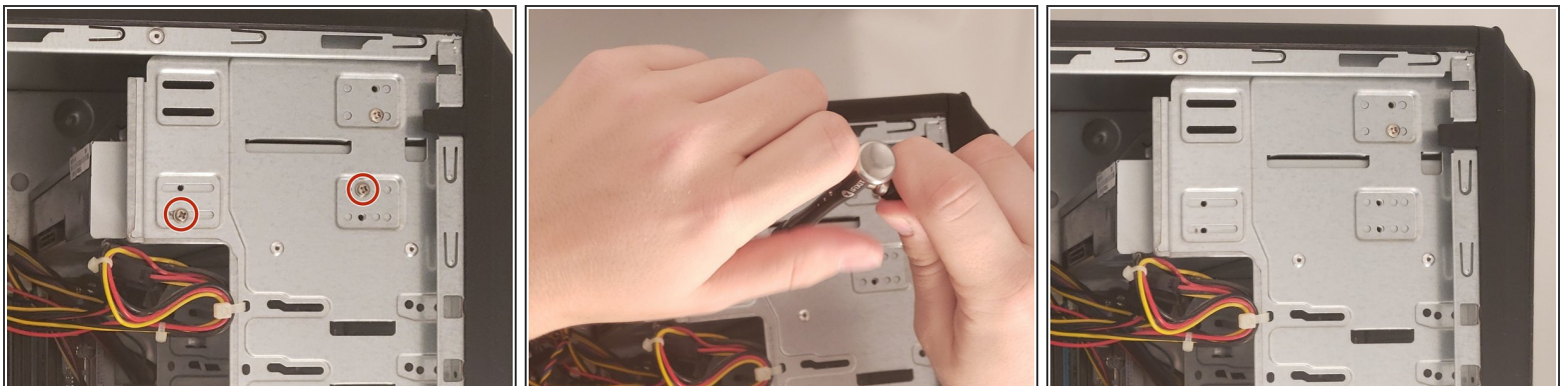
- [DRW-24B1ST](#) (1)

Step 1 — CD Drive



- Remove the sidepanel by unscrewing the two screws fastening the panel on the rear. Once unscrewed, slide the panel towards the rear until it releases then lift away.

Step 2



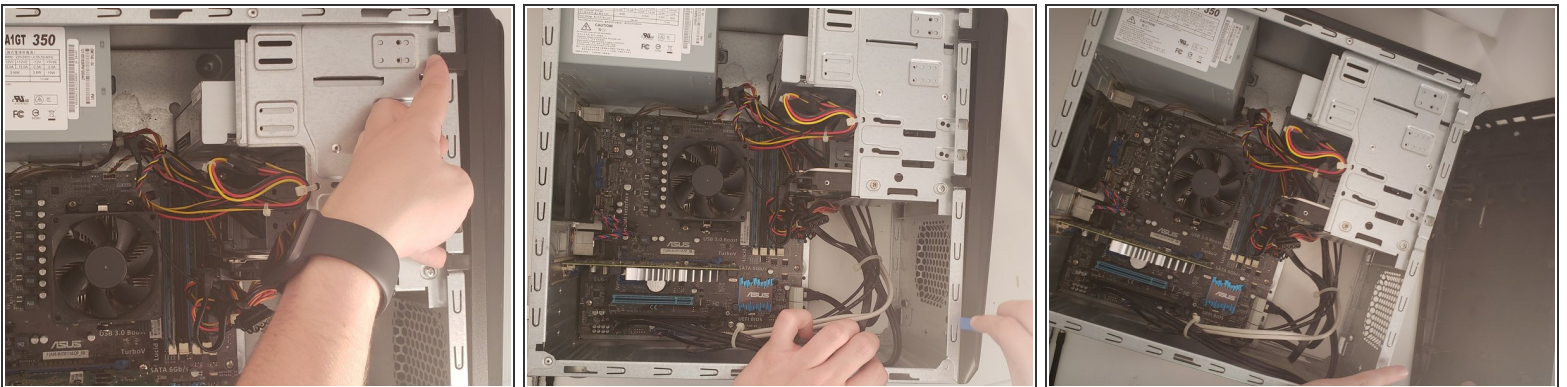
- Remove the two cables connected to the CD Tray
- Remove the two screws with a Phillips #0 screwdriver.

Step 3



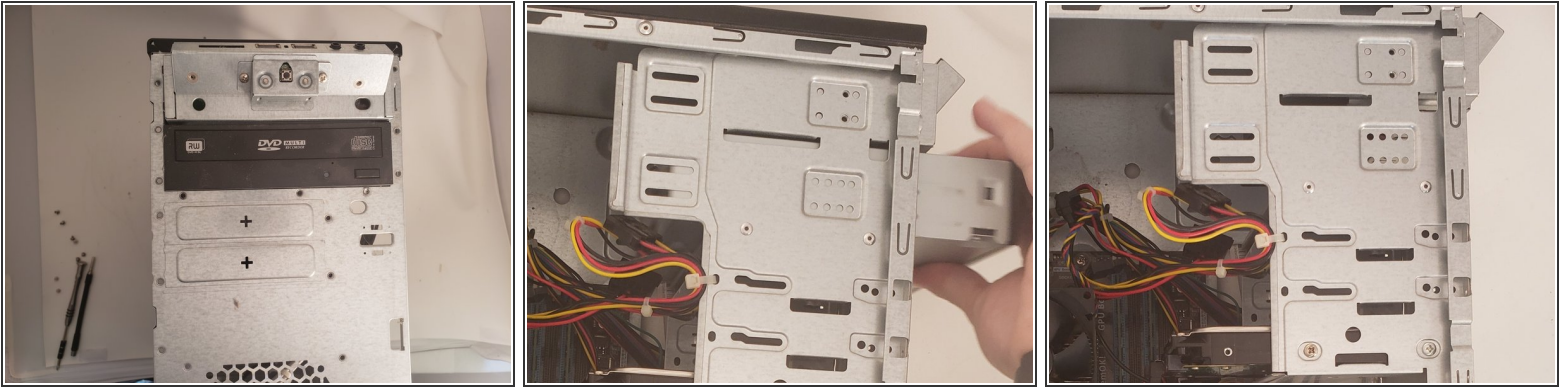
- Flip the computer over and remove the other side panel by unscrewing the two screws on the rear.
- Slide the side panel off and remove the two screws that are attached to the CD Tray with a Phillips #0 screwdriver.

Step 4



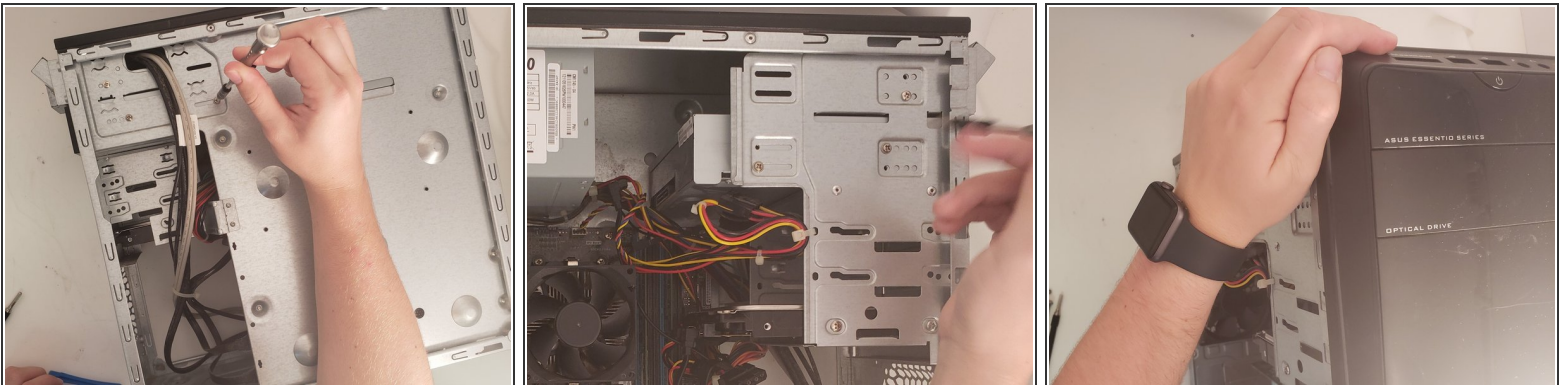
- Remove the front panel using the iFixit opening tool.
- ⓘ You will first pull the visible clips off of the chassis as seen in the second photo then use the opening tool to pry the other clips off.
- Once a few of the clips pop open, pull the front panel off with relative ease.

Step 5



- With the front panel removed, push the CD tray from the back, outwards. If no screws are left, it should slide right out.

Step 6



- Place the new CD Drive in the place of the old one and secure it by rescrewing the previous screws. Reattach the two connectors for power and data on the back.
- Reattach the front panel after reinstalling the CD Drive by orienting the panel with the chassis and pressing it into place.
- Make sure all clips are re-secured by pushing around the perimeter.

If everything looks correct, boot the computer and check to see if the CD Tray works as intended. If so, reassemble the case.