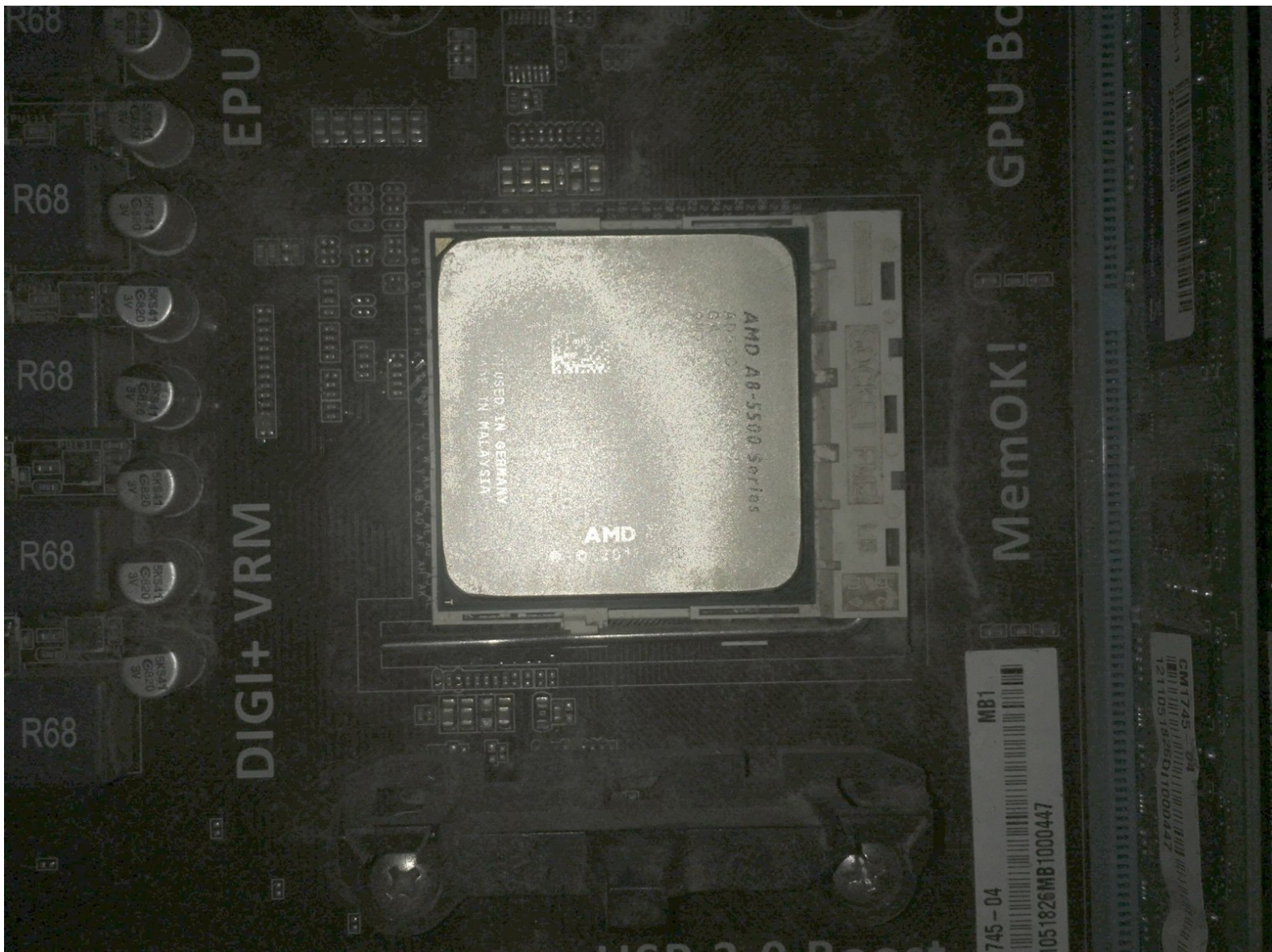




Asus CM1745 CPU Replacement

Partial teardown of desktop and replacement of faulty CPU.

Written By: TC Fowler



INTRODUCTION

This replacement guide requires working on the internals of the desktop. This could void any remaining warranty.

The first part covers the removal of the heatsink and how to replace it. The second half covers the removal of the CPU and how to replace it.

This guide also requires close-proximity to exposed electronics. Please ensure that the PC is both powered off and disconnected from the wall.

Be as careful as possible, CPUs and their sockets are quite fragile.



TOOLS:

- [Phillips #0 Screwdriver](#) (1)



PARTS:

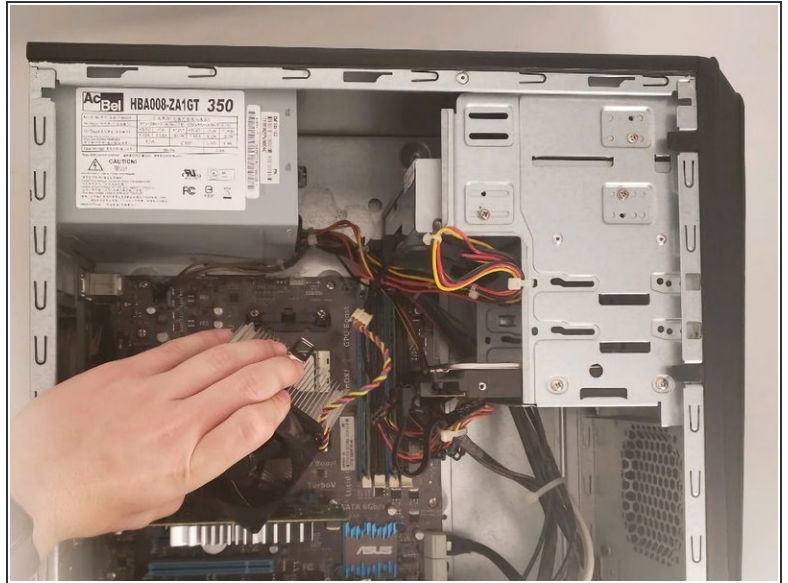
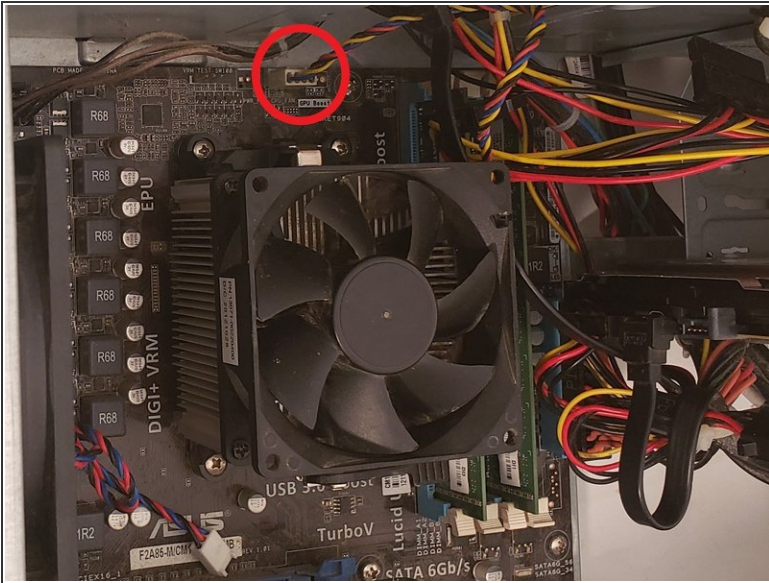
- [AMD A8-5500 Desktop APU](#) (1)

Step 1 — Heatsink



- Remove the sidepanel by unscrewing the two screws fastening the panel on the rear. Once unscrewed, slide the panel towards the rear until it releases then lift away.

Step 2



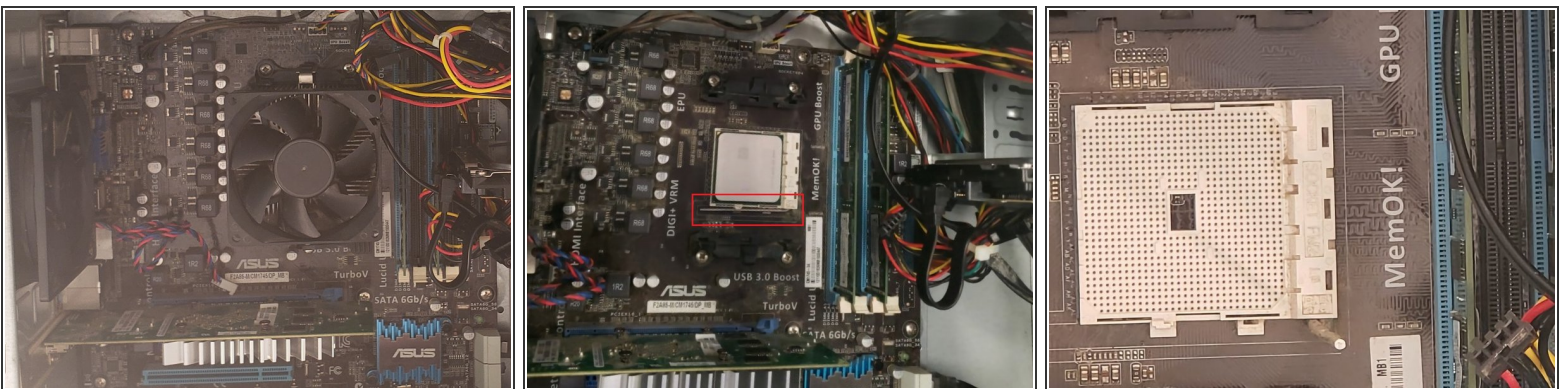
- Unplug the CPU fan connector from the motherboard.
- Then open the latch under the CPU fan and unhook the metal fasteners.
- Lift the CPU heatsink and cable off of the CPU carefully.

Step 3



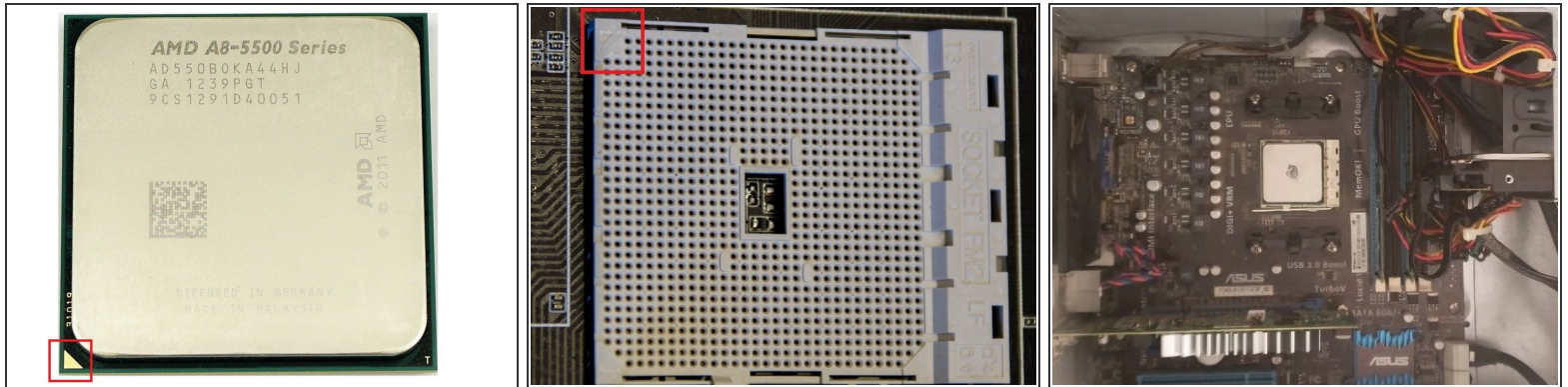
- Clean both the CPU top and the heatsink bottom by slightly moistening a paper towel with rubbing alcohol and rubbing lightly.
 - Grab your thermal paste and put a pea-sized amount in the middle of the CPU top.
 - Gently replace the heatsink on top of the CPU and re-lock the heatsink fasteners.
 - Replug the CPU Fan connector to the motherboard header.
- ❗ Check out the [How to Apply Thermal Paste](#) guide for more details and best practices.

Step 4 — CPU



- Remove CPU Heatsink to expose CPU.
- Open the silver retention bar of the CPU by pulling the bar out of the plastic hook and hinging it open.
- Remembering the orientation of the CPU, carefully pull the CPU out of the socket.

Step 5



- Take your replacement CPU and line up the arrows marked in the photos.
- Place the CPU in the socket and gently massage the top of the cpu to ensure that there is no wiggle.
- If the CPU feels secure, pull the retention bar back into place.
- Place new thermal paste onto the CPU and replace the heatsink.

If everything looks correct, boot the computer up. It may take a few minutes to fully boot as the motherboard recognizes the new hardware.