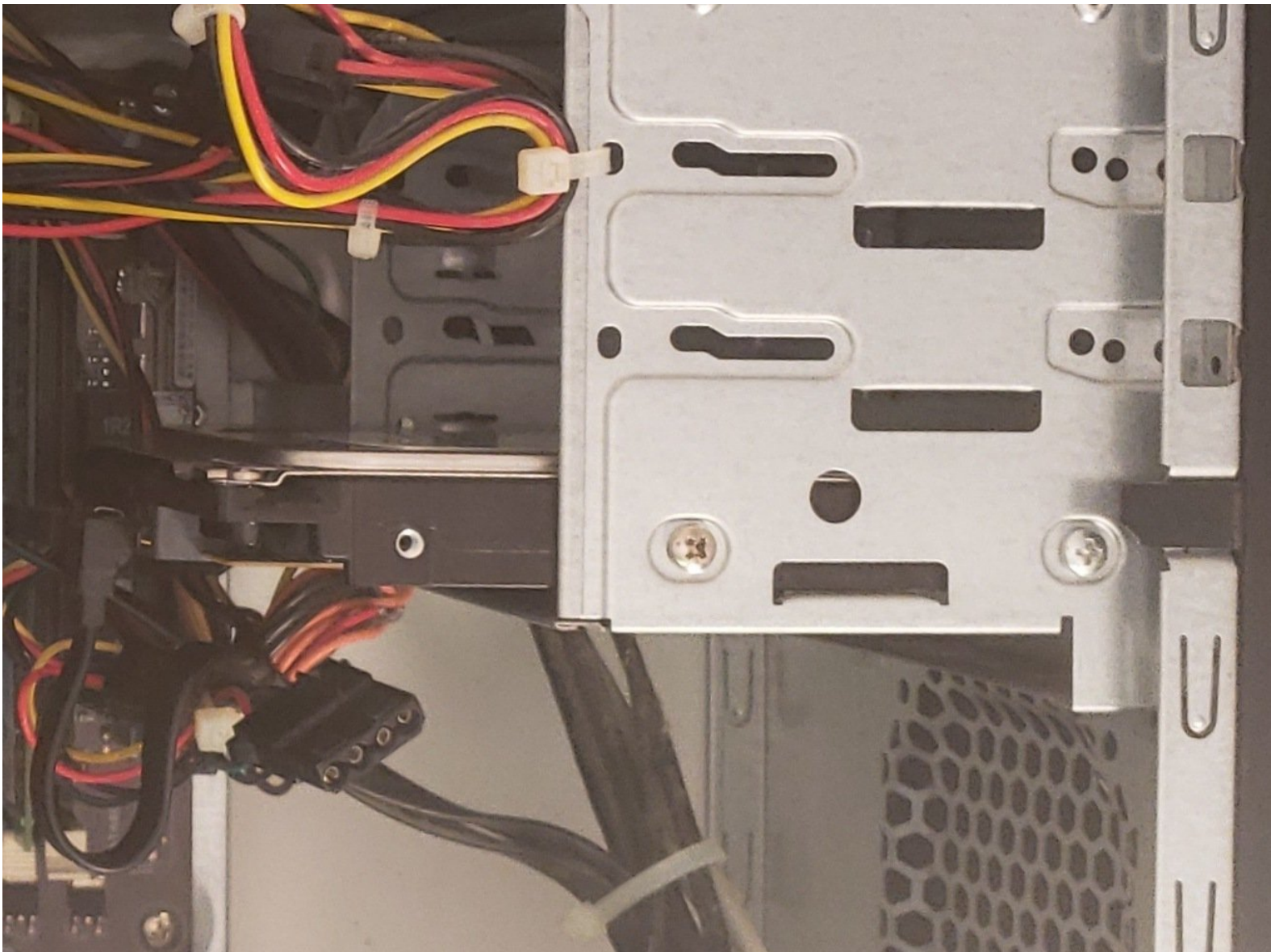




Asus CM1745 Hard Drive Replacement

Partial teardown to replace a failing/failed Hard Disk Drive.

Written By: TC Fowler



INTRODUCTION

This replacement guide requires working on the internals of the desktop. This could void any remaining warranty.

This guide also requires close-proximity to exposed electronics. Please ensure that the PC is both powered off and disconnected from the wall.



TOOLS:

- [Phillips #0 Screwdriver](#) (1)



PARTS:

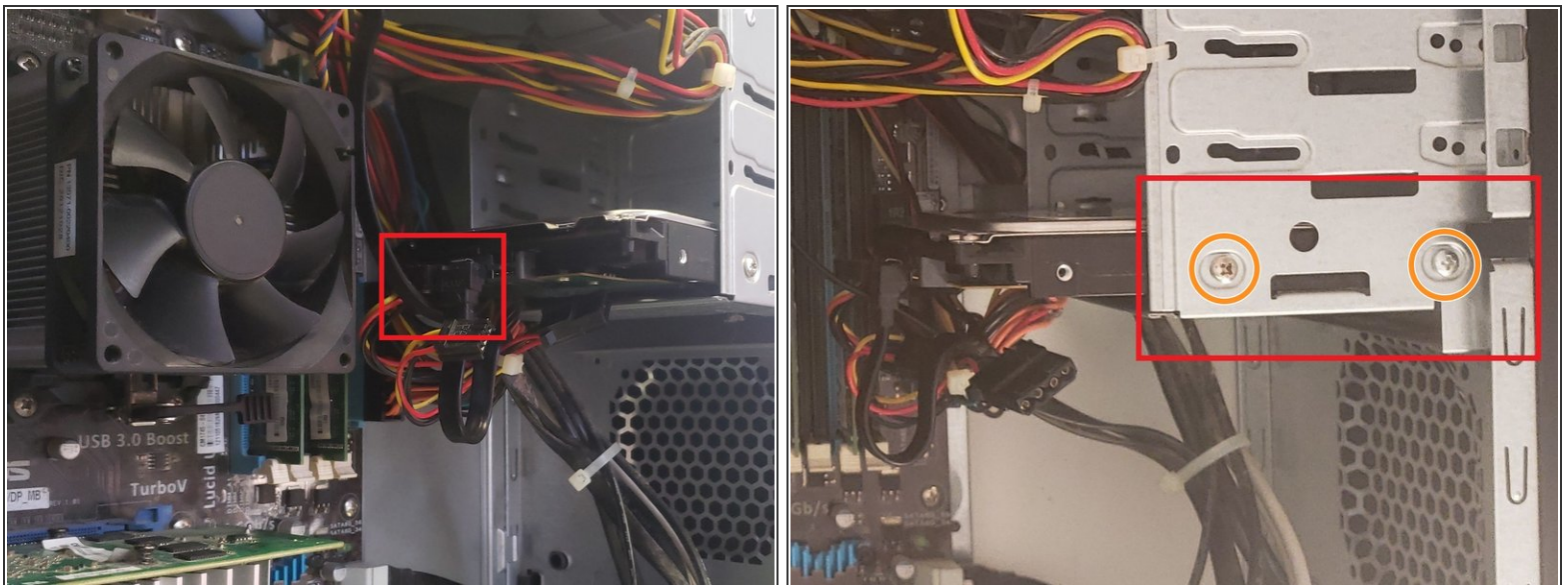
- [1 TB SATA Desktop Hard Drive](#) (1)

Step 1 — Hard Drive



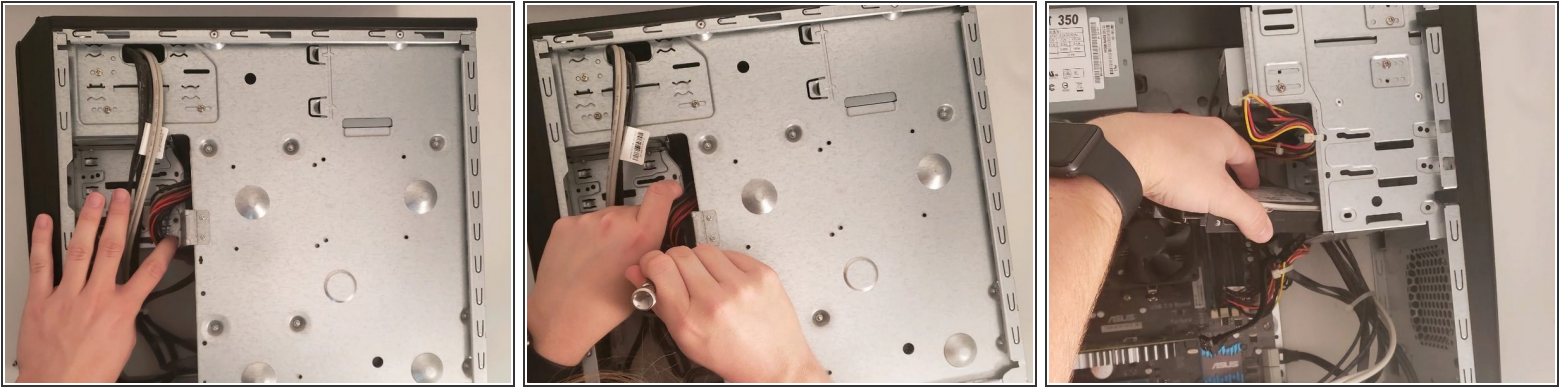
- Remove the sidepanel by unscrewing the two screws fastening the panel on the rear. Once unscrewed, slide the panel towards the rear until it releases then lift away.

Step 2



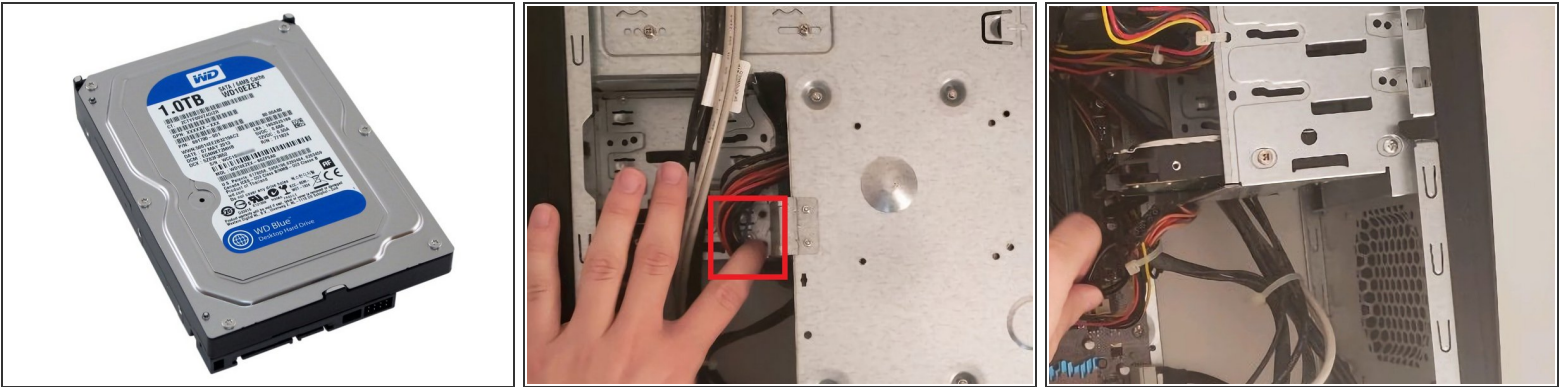
- Remove the two cables from the rear of the Hard Drive.
- Unscrew the two screws attached to the Hard Drive with a Phillips #0 screwdriver.

Step 3



- Flip the computer over and remove the sidepanel on that side.
- Remove the Phillips #0 screw(s) attached to the Hard Drive on this side.
- Once removed, slide the Hard Drive out the back. Remember the orientation that the Hard Drive was in.

Step 4



- Take your replacement Hard Drive (Picture does not necessarily represent the exact Hard Drive) and place it in the same slot as the old one.
- Replace the two screws on the front of the cage and the screw(s) on the back.
- Replace the power and data cables on the back of the hard drive.

If everything looks to be in the right place, you should be able to boot the computer and boot into the BIOS to check if the Hard Drive is recognized. You will have to install a new Windows installation if this Hard Drive was your only Hard Drive.