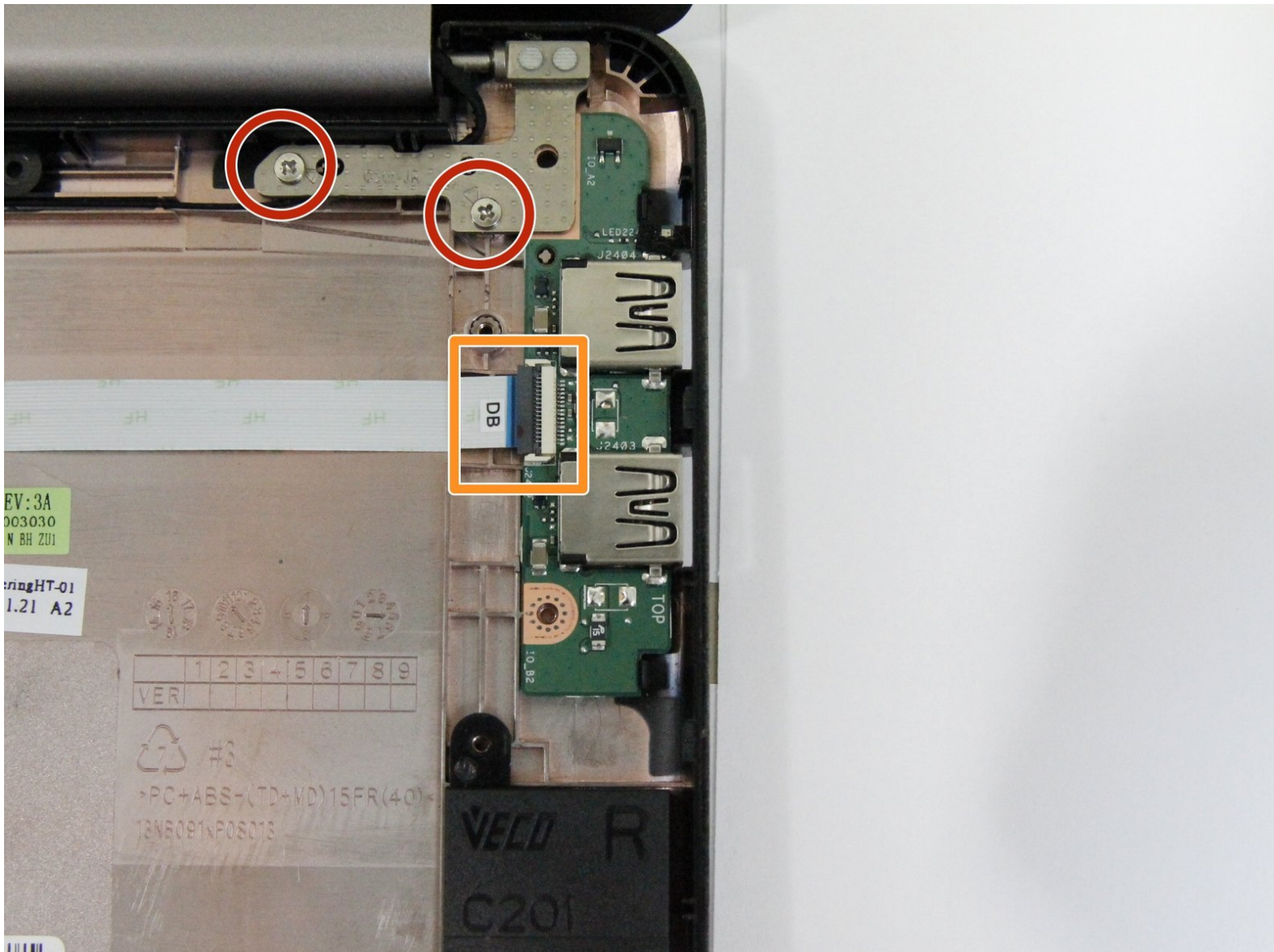




Asus Chromebook C201PA-DS02-LG Daughterboard Replacement

How to replace an Asus Chromebook C201PA-DS02-LG daughterboard.

Written By: Brittany M Won



INTRODUCTION

Having issues with the USB port of your chromebook? This guide will help you fix that.

TOOLS:

- [iFixit Opening Tools](#) (1)
 - [Metal Spudger](#) (1)
 - [Phillips #0 Screwdriver](#) (1)
-

Step 1 — Keyboard



- Use a metal spudger to pry off the two feet closest to the hinge of the laptop.

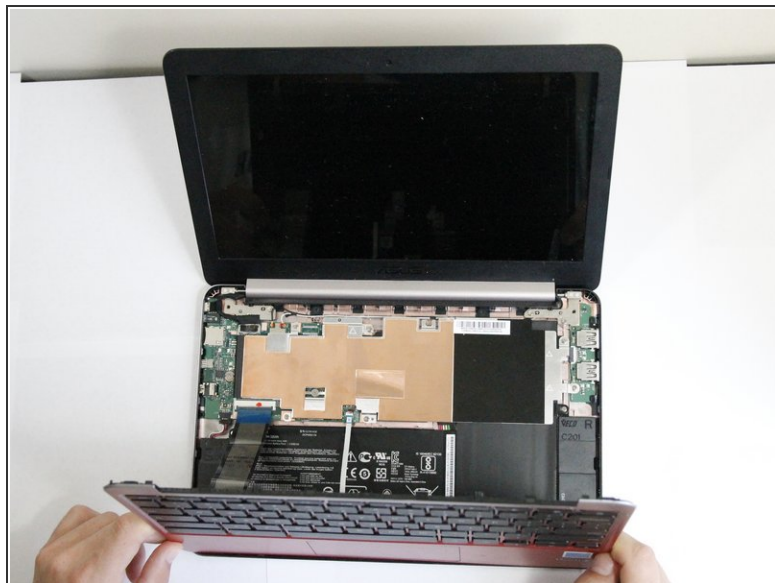
☞ The feet are attached to the laptop by adhesives, therefore they may not stick as well after multiple removals.

Step 2



- Use a Phillips #0 screwdriver to unscrew the six 5mm screws.
- Use a Phillips #0 screwdriver to unscrew the two 6mm screws.

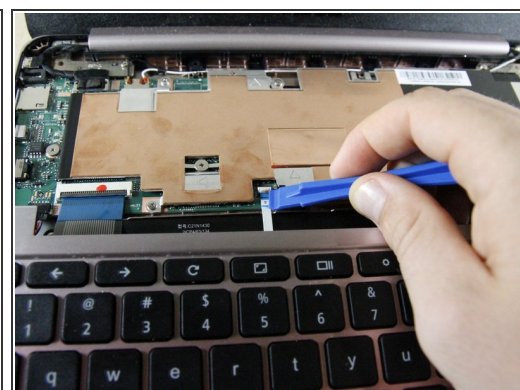
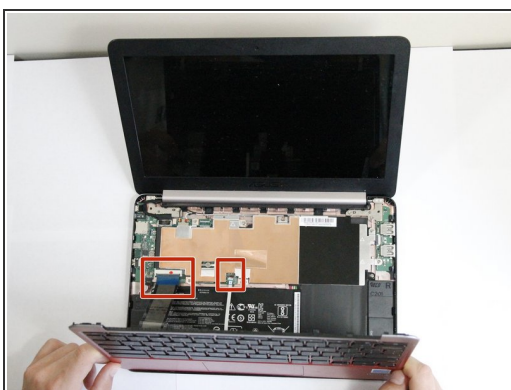
Step 3



- Use a plastic opening tool to pry the keyboard off the edges of the computer.

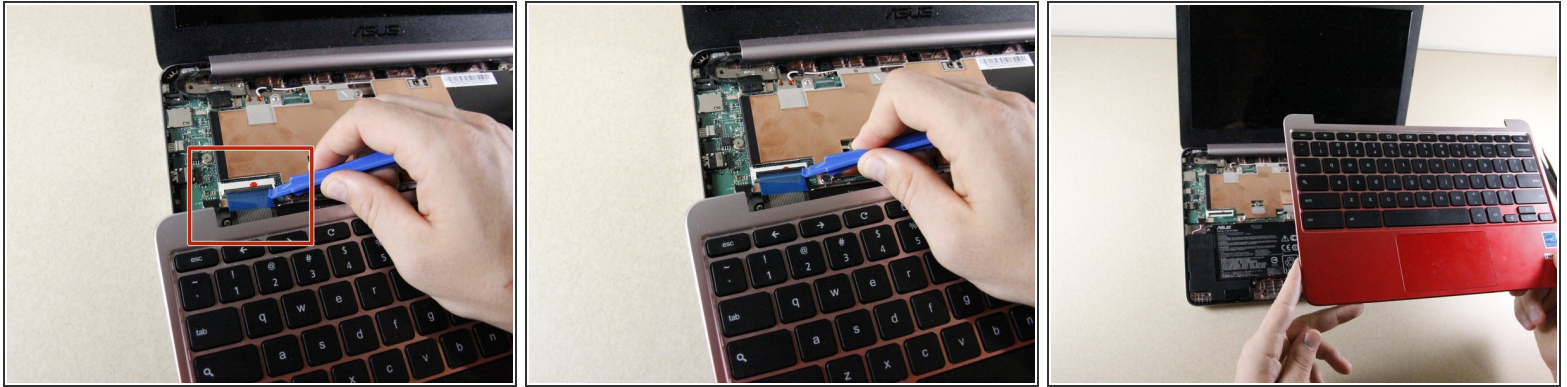
i The edges will make a popping noise.

Step 4



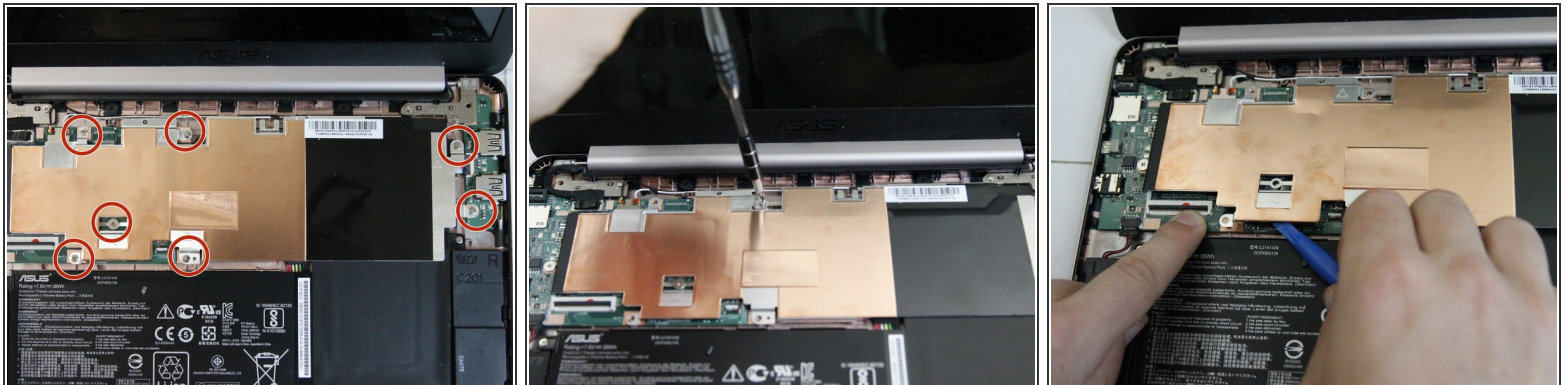
- Flip up the white bar that connects the thin white strip using a plastic opening tool.
- Grab the thin white strip and pull straight back to remove the strip from the connector.

Step 5



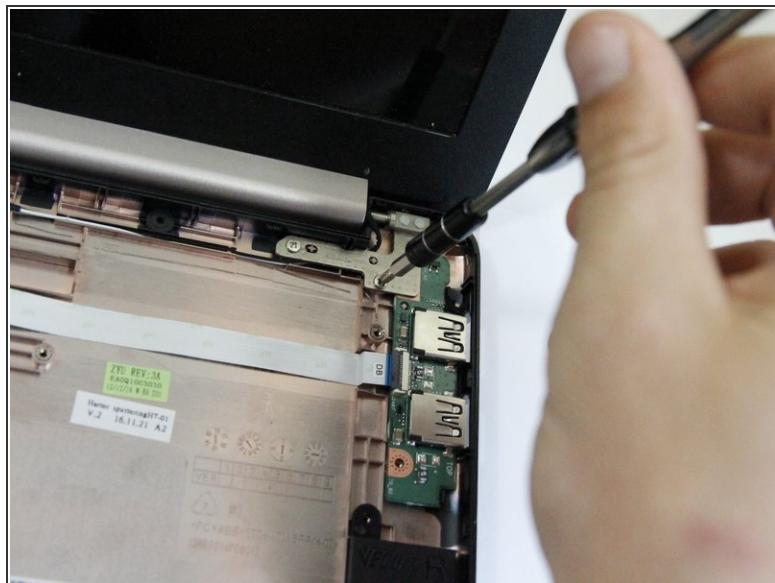
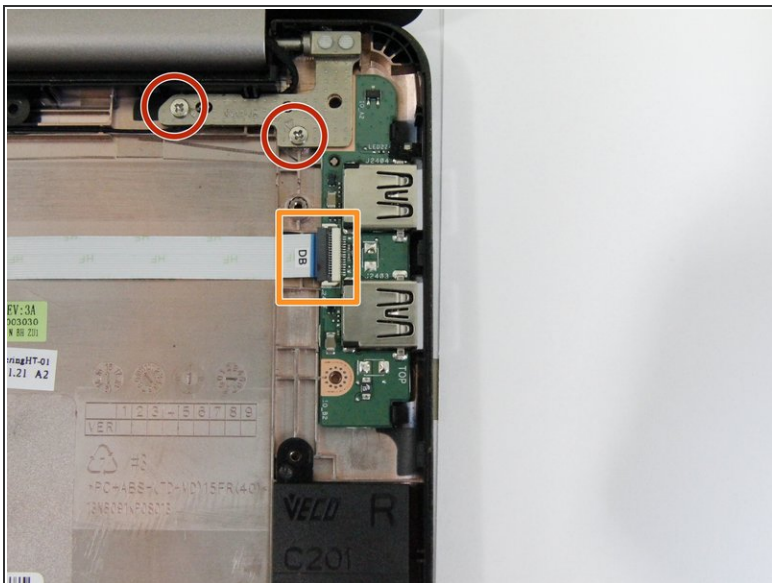
- Use a plastic opening tool to lift the black bar above the wide black strip in the connector.
- Grab the wide black strip and pull straight back to remove the strip from the connector.
- Remove the keyboard by lifting it straight up.

Step 6 — Metal Plate



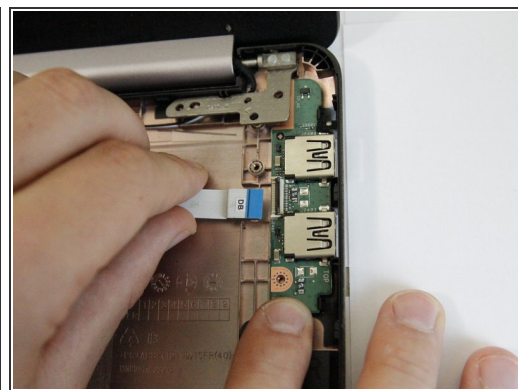
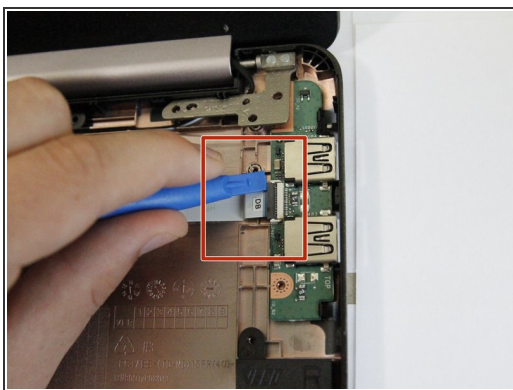
- Unscrew the seven 4mm screws using a Phillips #0 screwdriver.
- Wiggle the plate back and forth to loosen the adhesive under the plate.
- ☞ The adhesive will not be the same after removal and more adhesive may be necessary upon reassembly.
- Rotate the screwdriver in a counterclockwise direction to remove the screws.
- ⚠ Do not rest your arm or hand in the adhesive.

Step 7 — Daughterboard



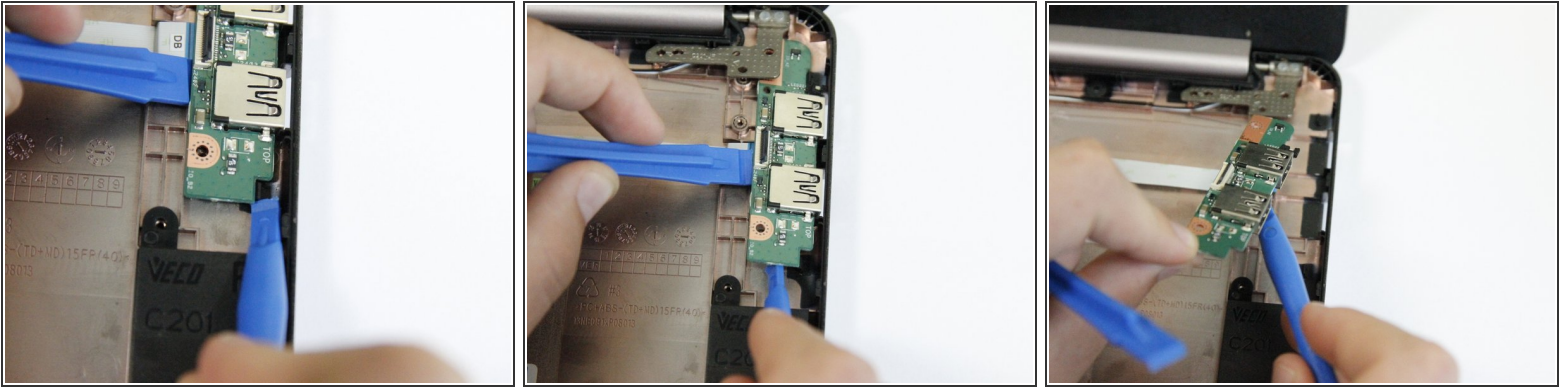
- Use a Phillips #0 screwdriver to unscrew the two 4mm screws.
- Flip up the white tab to remove the white ribbon cable.

Step 8



- Use a plastic opening tool to flip up the connector connecting the slim blue tipped strip to the daughterboard.
- Lift the slim blue tipped strip from the daughterboard.

Step 9



- Place the plastic opening tools underneath the daughterboard.
- Gently lift the daughterboard from the base of the device.

To reassemble your device, follow these instructions in reverse order.