



Asus Chromebook C202 Motherboard Replacement

Replace the motherboard of the Chromebook.

Written By: Christopher Segale



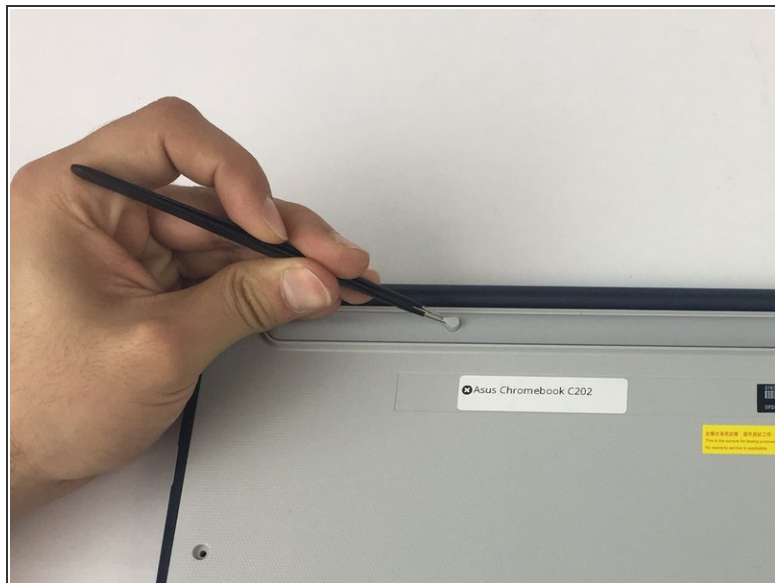
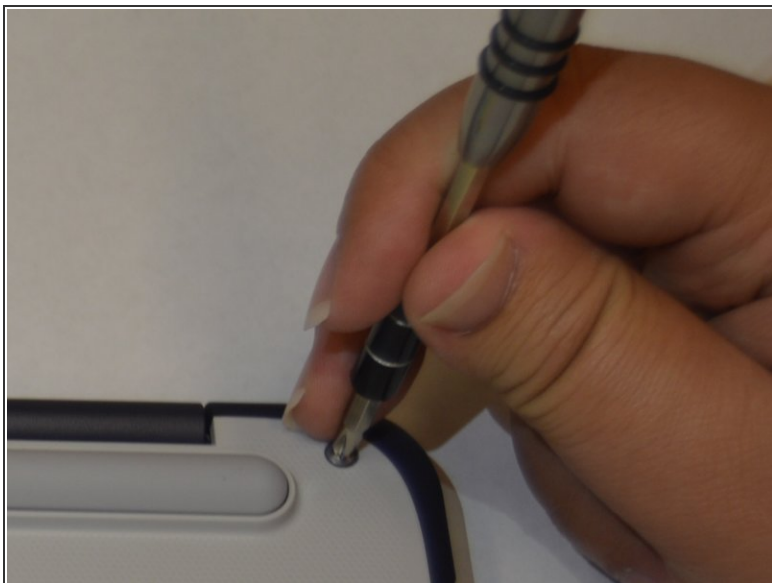
INTRODUCTION

Do the ports on the left side of the Chromebook not work? Is the computer not working at all while the battery is still functional and filled? Then you may need to replace the motherboard.

TOOLS:

- [Phillips #1 Screwdriver](#) (1)
 - [Tweezers](#) (1)
 - [iFixit Opening Tools](#) (1)
-

Step 1 — Back Panel



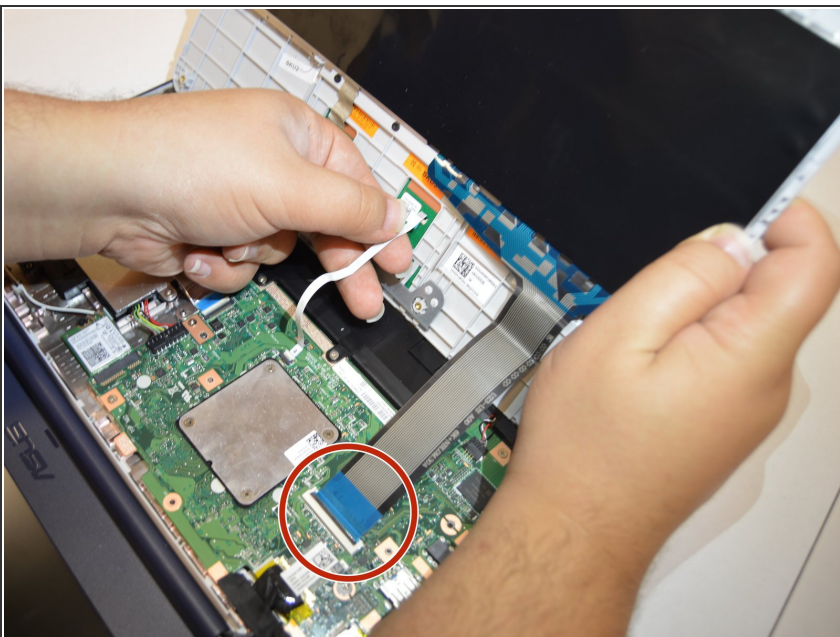
- Remove ten 8 mm Phillips #1 screws from the bottom of the Chromebook using a [Phillips #1 screwdriver](#).
- Two of the screws are hidden by rubber caps along the rubber rest of the device. Use [tweezers](#) to get them out.

Step 2



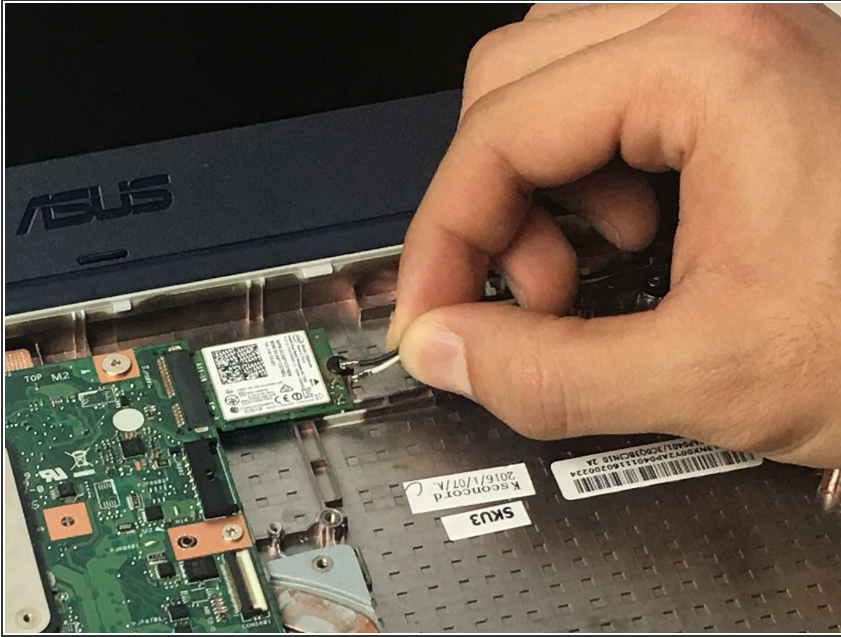
- Place the [plastic opening tool](#) into the edges between the front of the Chromebook and the back of it with the upper scoop of the opening tool facing upward.
- Push down on the plastic opening tool to unhinge the top portion of the Chromebook from its lower portion. Opening the Chromebook all the way where the display touches the ground helps in opening up the top edge.
- Use your hand to gently lift the top portion of the Chromebook from the bottom portion of it to avoid damaging the ribbon cables.

Step 3



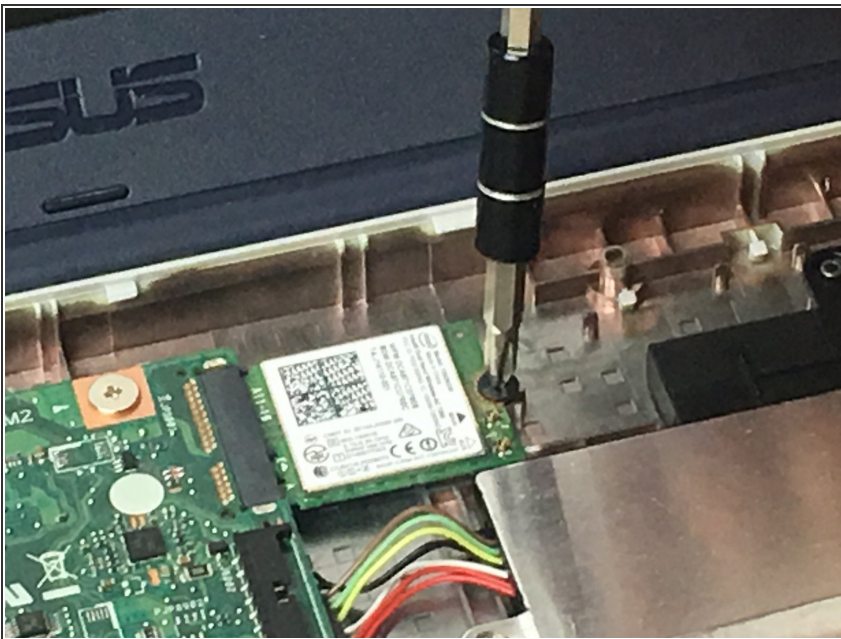
- Gently disconnect the ribbon cable connecting the trackpad to the motherboard.
- Gently disconnect the ribbon cable connecting the keyboard to the motherboard.

Step 4 — Wireless Card



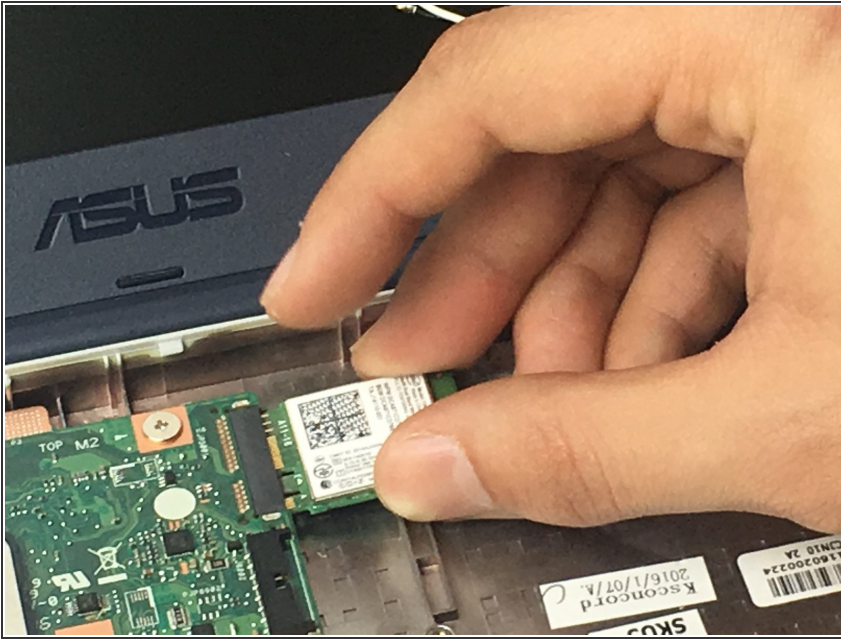
- Remove the black and white wires from the wireless card.

Step 5



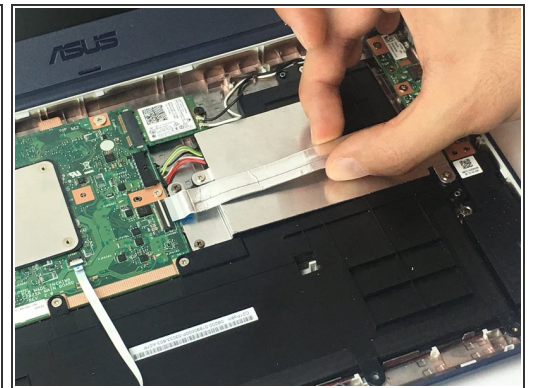
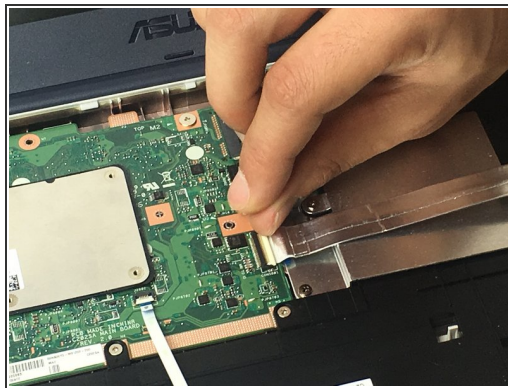
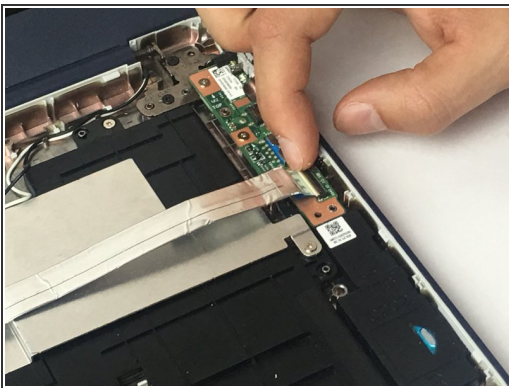
- Unscrew the single 4 mm Phillips #1 screw pinning the wireless card in place.

Step 6



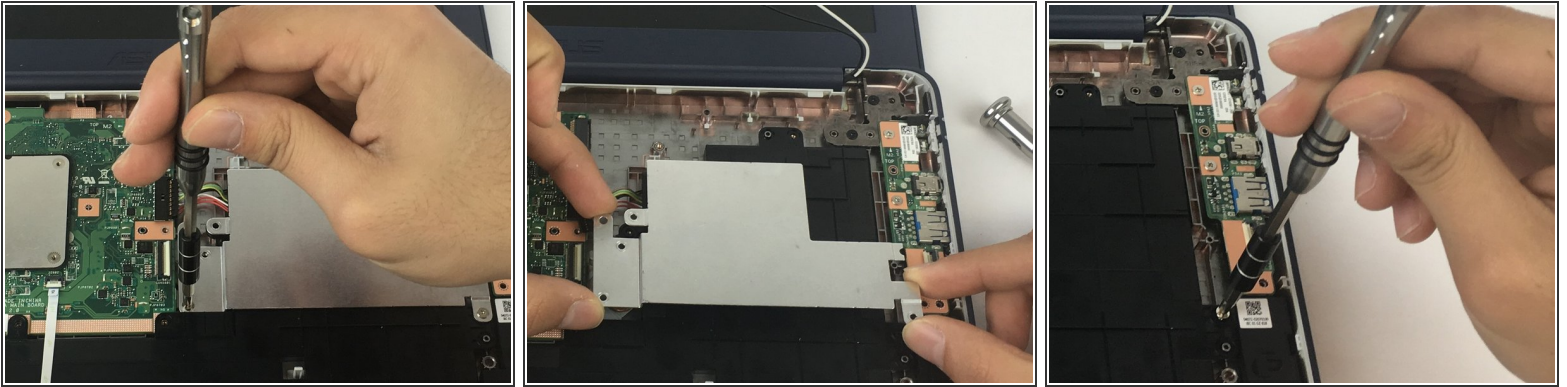
- Gently pull the wireless card away from the motherboard.

Step 7 — Battery



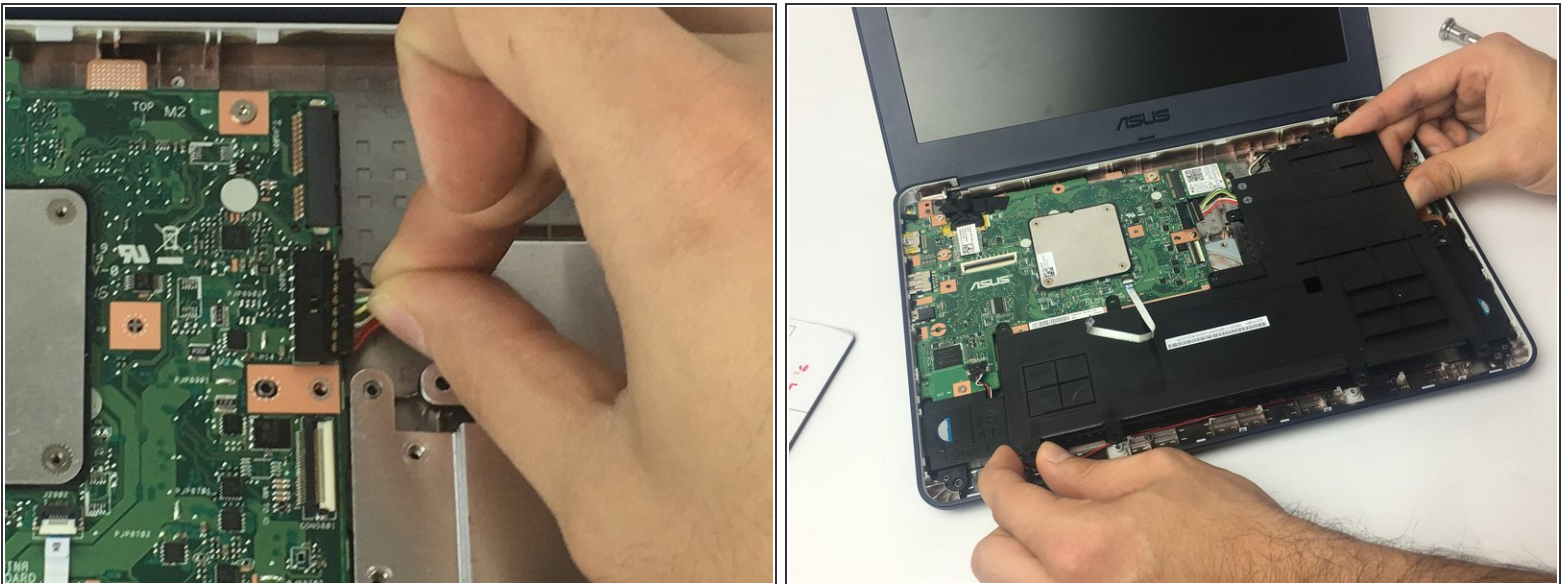
- Pull the latch out on both the Input/Output board as well as the motherboard.
- Gently remove the ribbon cable connecting the I/O board to the motherboard.

Step 8



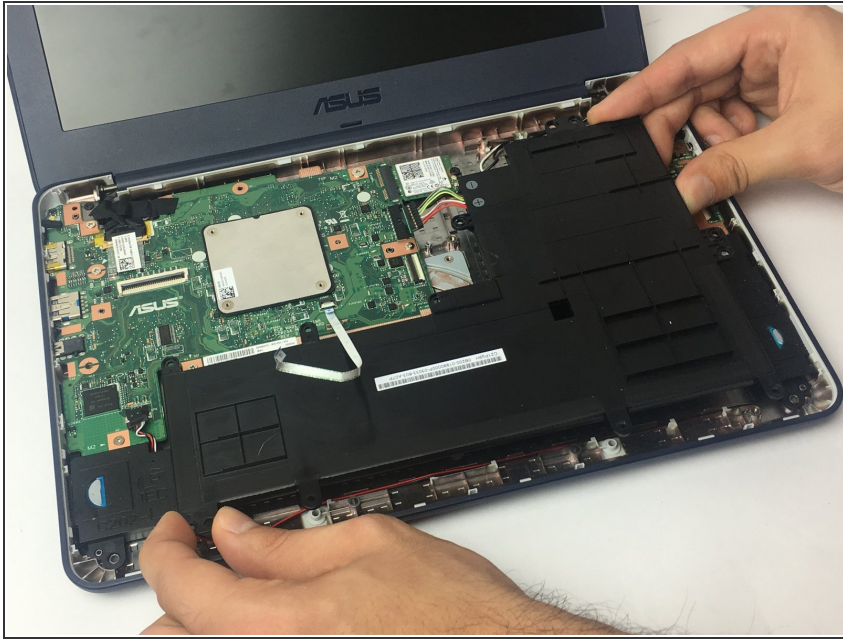
- Remove two 4 mm Phillips #1 screws from the metal grate connected to the battery.
- Remove metal grate from battery.
- Remove six 4 mm Phillips #1 screws from the battery

Step 9



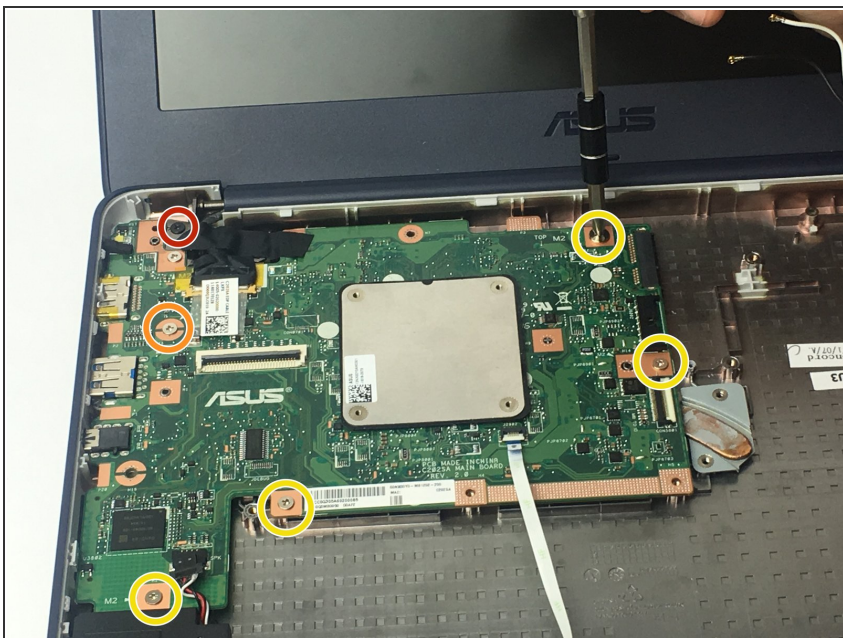
- Disconnect the battery from the motherboard.
- Lift battery from the bottom portion of the Chromebook.

Step 10



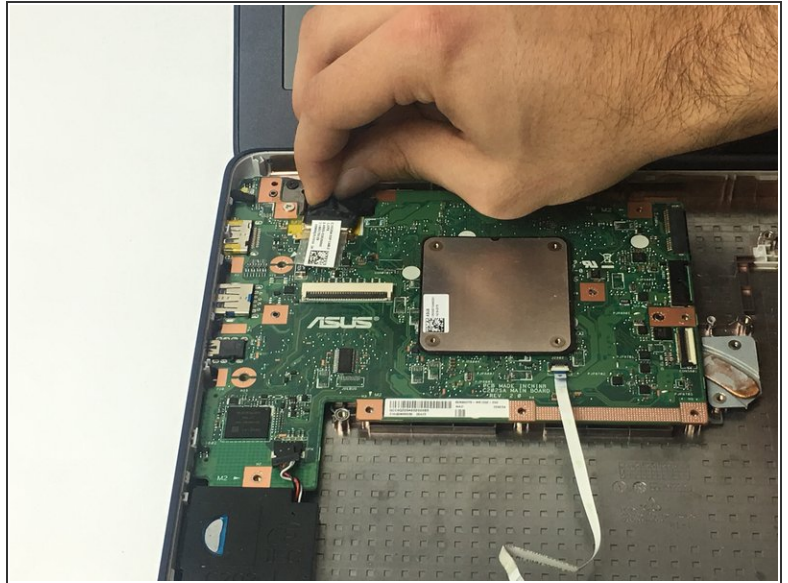
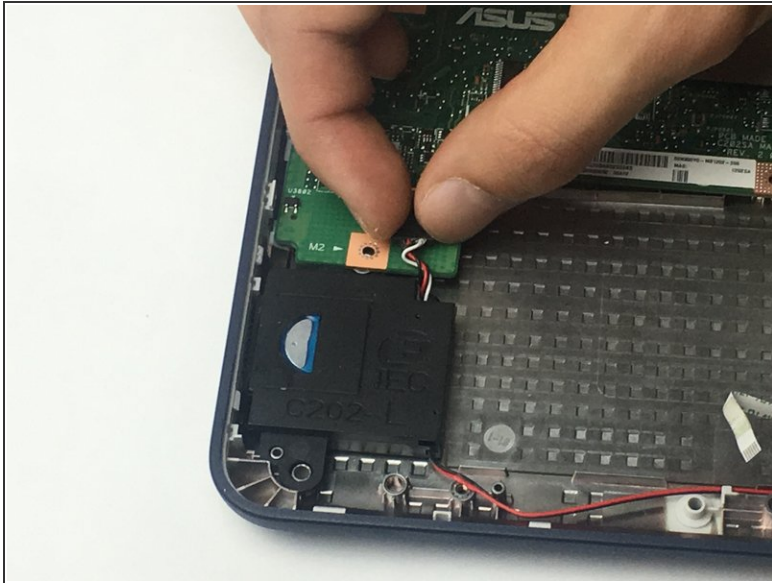
- Remove the battery from the Chromebook.

Step 11 — Motherboard



- Unscrew one 3 mm Phillips #1 screw.
- Unscrew one 2.5 mm Phillips #1 screw.
- Unscrew four 4 mm Phillips #1 screws.

Step 12



- Disconnect motherboard from speaker.
- Disconnect motherboard from display.

Step 13



- Remove motherboard from Chromebook.

To reassemble your device, follow these instructions in reverse order.