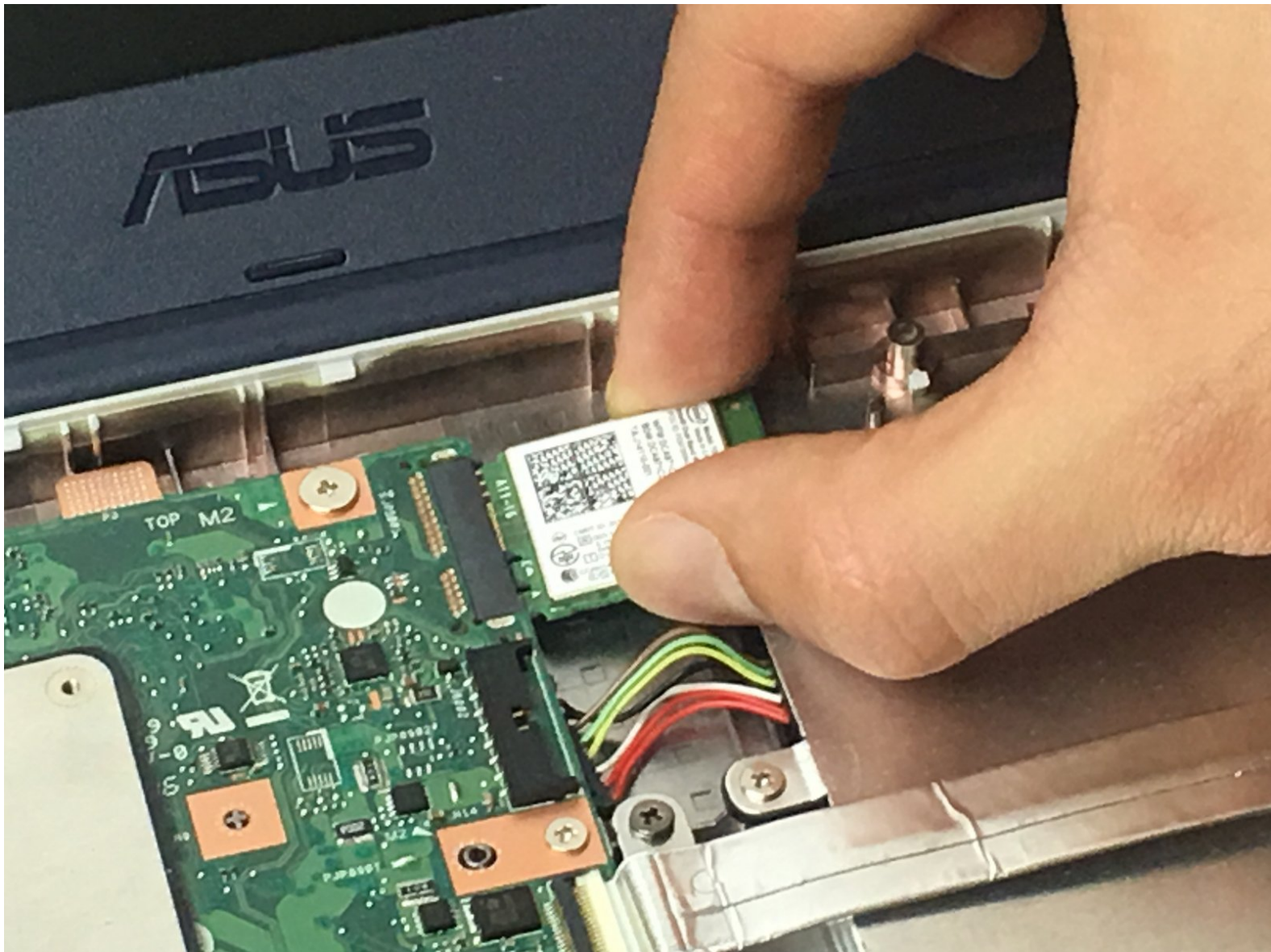




Asus Chromebook C202 Wireless Card Replacement

This guide should be used to replace a wireless card that doesn't work.

Written By: Christopher Segale



INTRODUCTION

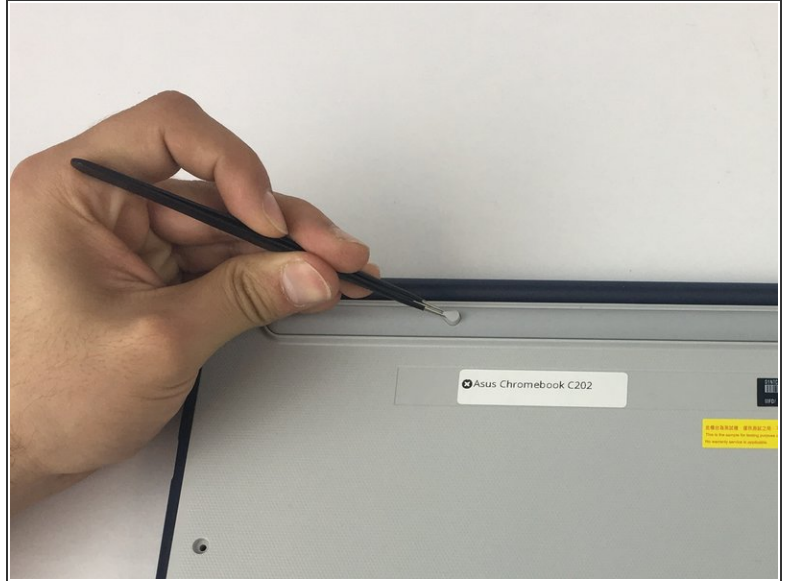
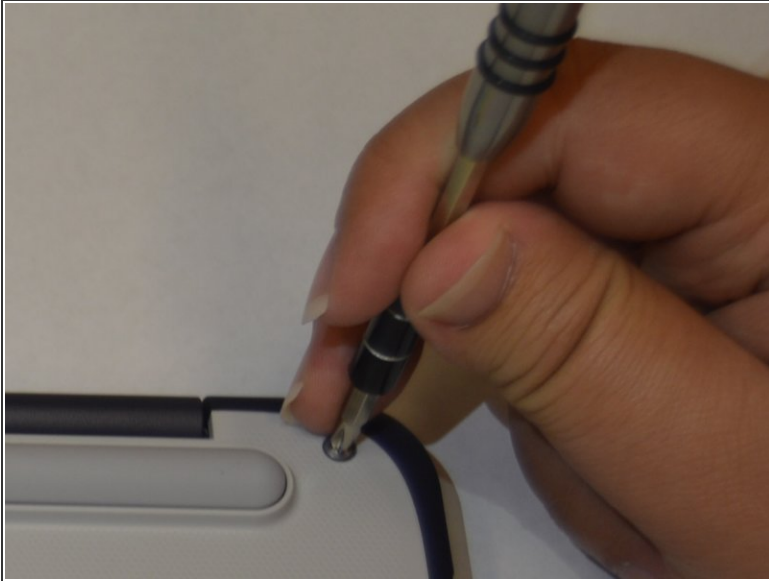
Is the wireless connection to your Chromebook not working? Did you rule out any software-related solutions? If so, then you should replace your wireless card.



TOOLS:

- [Phillips #1 Screwdriver](#) (1)
 - [Tweezers](#) (1)
 - [iFixit Opening Tools](#) (1)
-

Step 1 — Back Panel



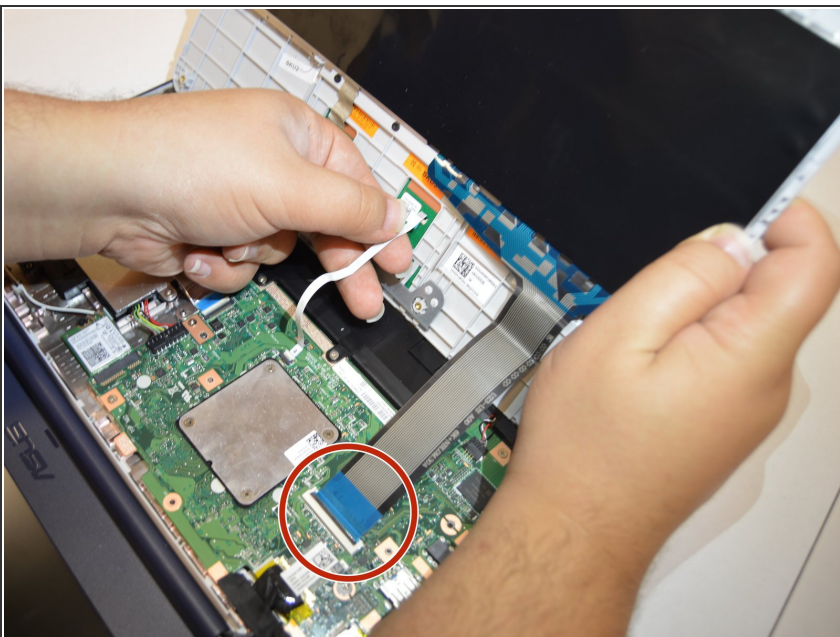
- Remove ten 8 mm Phillips #1 screws from the bottom of the Chromebook using a [Phillips #1 screwdriver](#).
- Two of the screws are hidden by rubber caps along the rubber rest of the device. Use [tweezers](#) to get them out.

Step 2



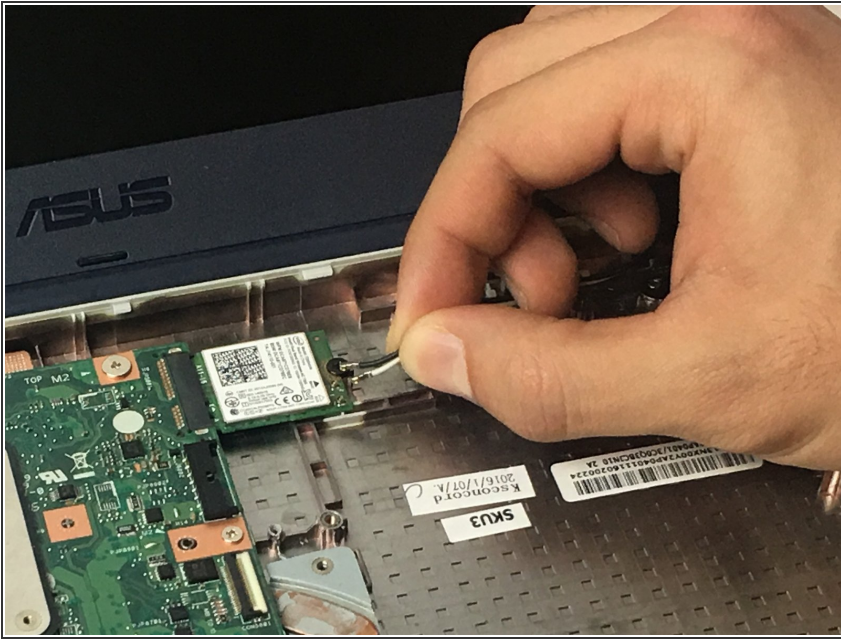
- Place the [plastic opening tool](#) into the edges between the front of the Chromebook and the back of it with the upper scoop of the opening tool facing upward.
- Push down on the plastic opening tool to unhinge the top portion of the Chromebook from its lower portion. Opening the Chromebook all the way where the display touches the ground helps in opening up the top edge.
- Use your hand to gently lift the top portion of the Chromebook from the bottom portion of it to avoid damaging the ribbon cables.

Step 3



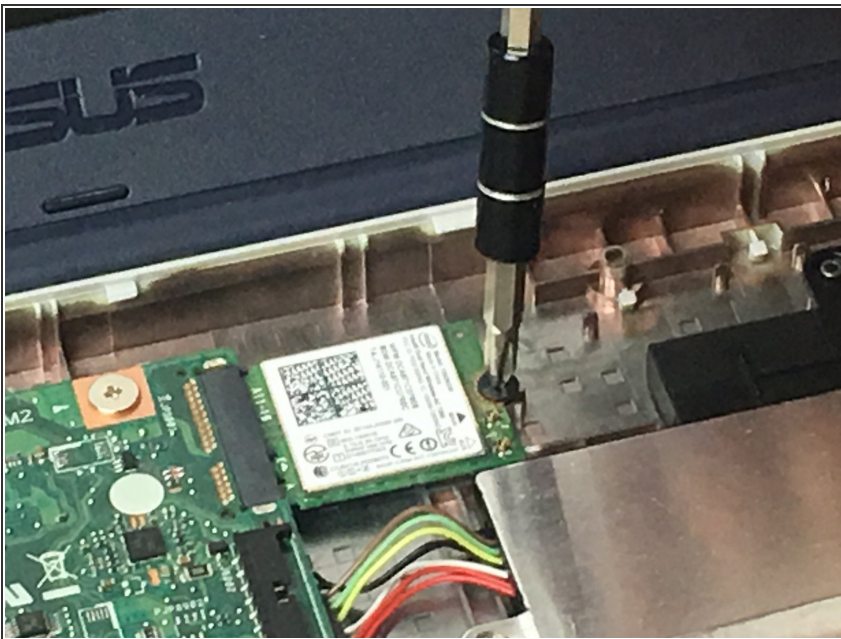
- Gently disconnect the ribbon cable connecting the trackpad to the motherboard.
- Gently disconnect the ribbon cable connecting the keyboard to the motherboard.

Step 4 — Wireless Card



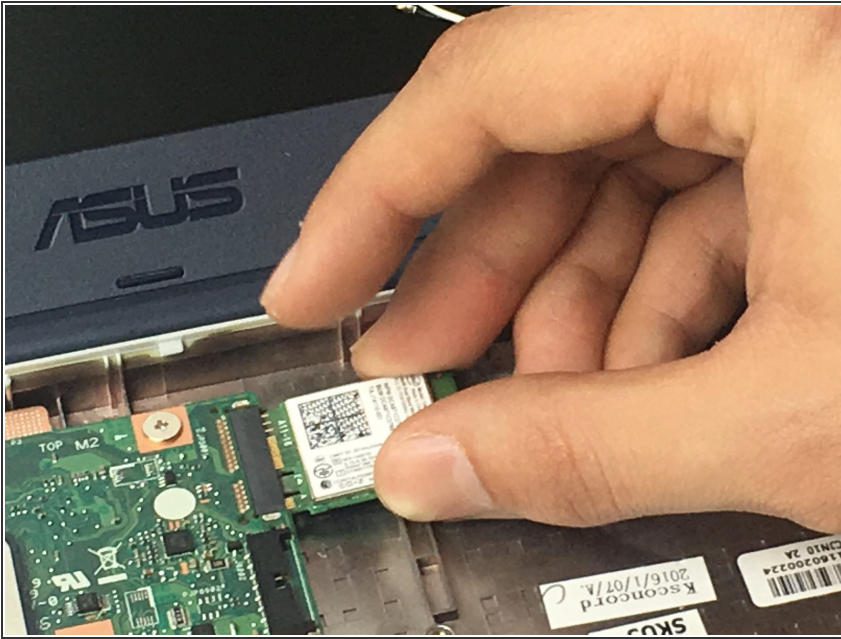
- Remove the black and white wires from the wireless card.

Step 5



- Unscrew the single 4 mm Phillips #1 screw pinning the wireless card in place.

Step 6



- Gently pull the wireless card away from the motherboard.

To reassemble your device, follow these instructions in reverse order.