

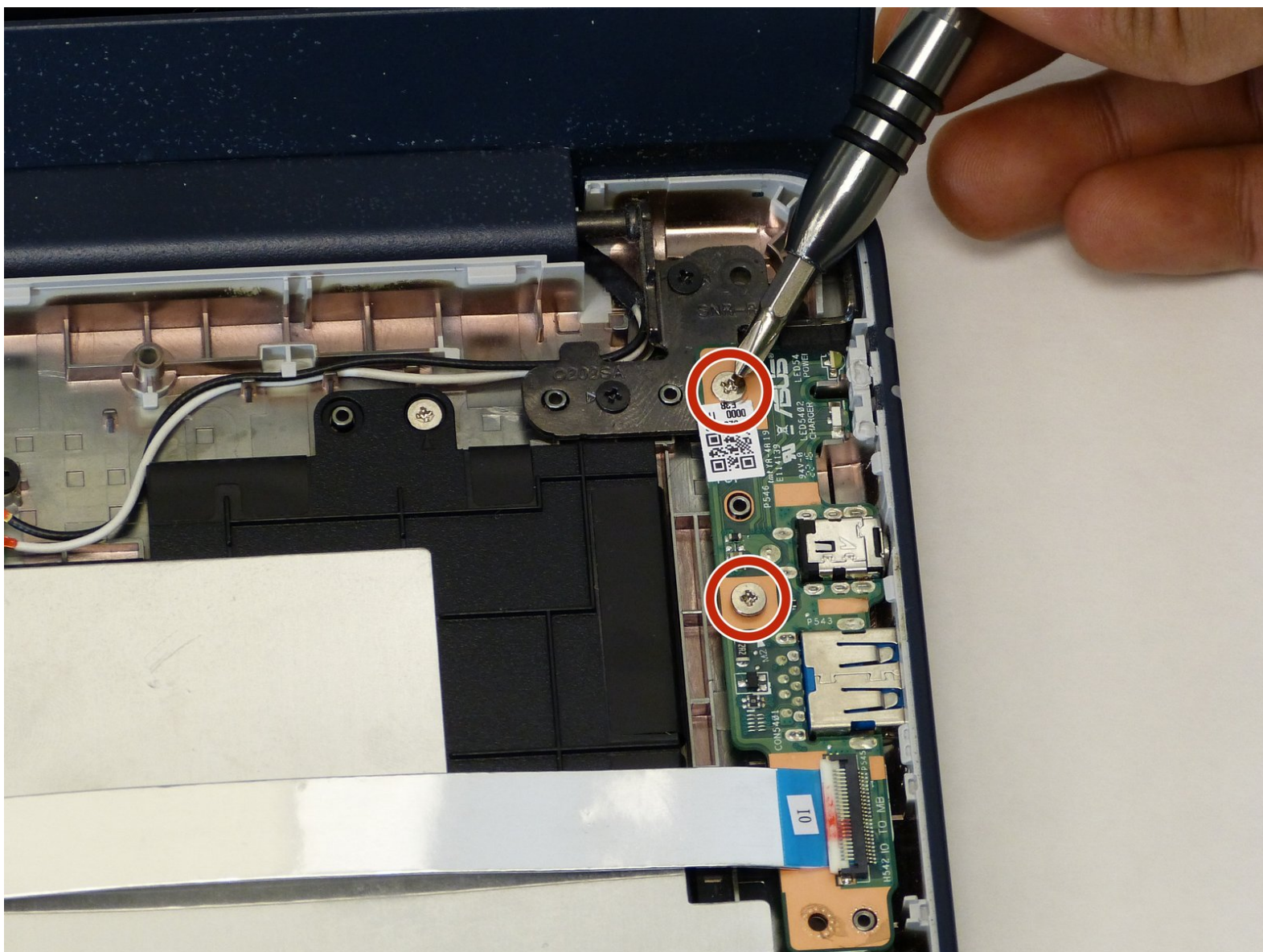


Asus Chromebook C202SA-YS02

Daughterboard Replacement

This repair guide will take you step-by-step through the process of replacing the daughterboard.
The daughterboard is also known as the USB Port.

Written By: Beau Hansen



INTRODUCTION

The daughterboard is an extension of the motherboard. The daughterboard is connected to the USB drive, so when you plug into the USB compartment, the daughterboard communicates with the motherboard. This guide will show how to remove the daughterboard/USB piece.



TOOLS:

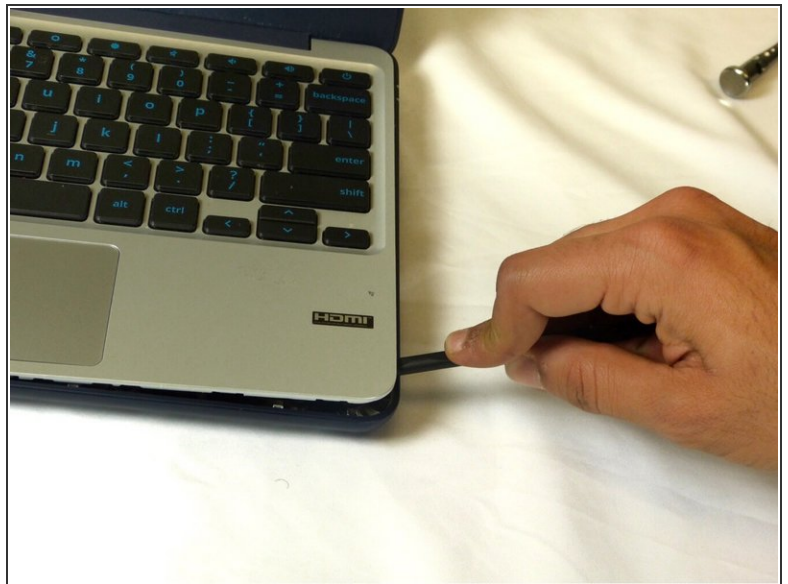
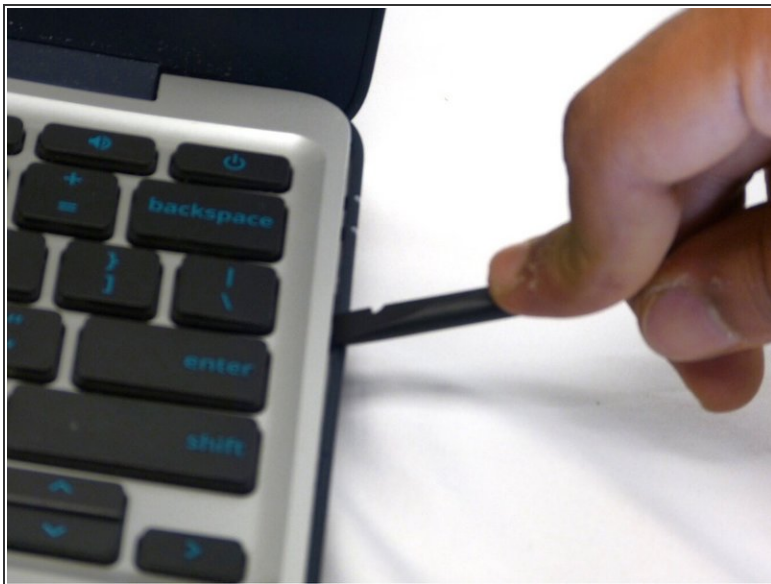
- [Phillips Head Screwdriver: Size PH1](#) (1)
 - [Spudger](#) (1)
-

Step 1 — Palm Rest



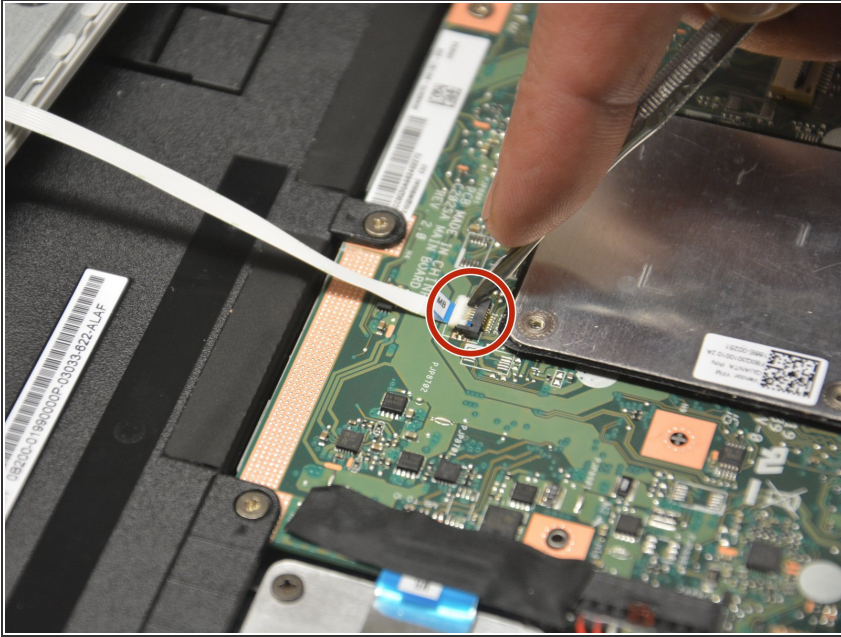
- Turn the device over so the bottom is facing up.
- Remove the ten Phillips #1 8.0 mm screws.

Step 2



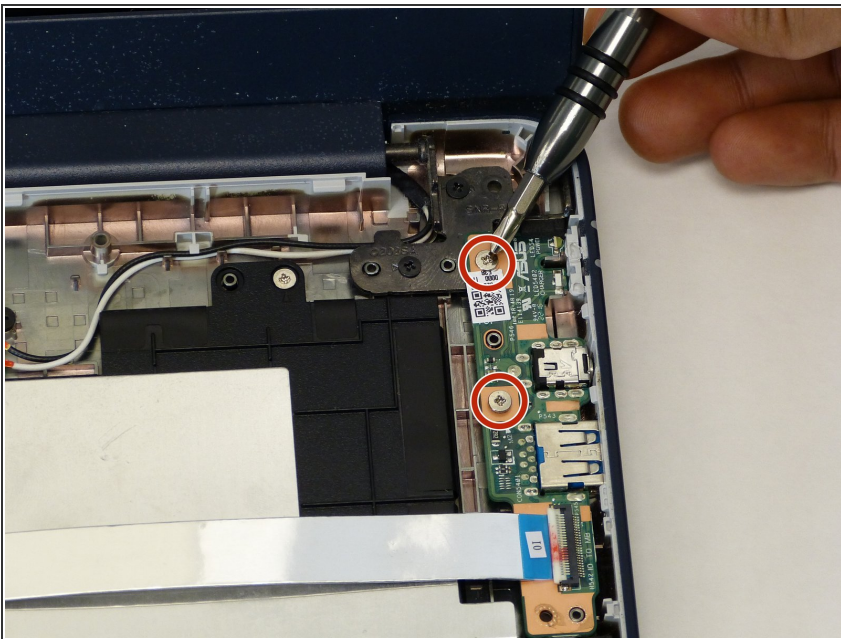
- Carefully use the plastic opening tool to pry the palm rest apart from the bottom cover. Start from one spot and systematically work your way around until the whole palm rest is detached.

Step 3



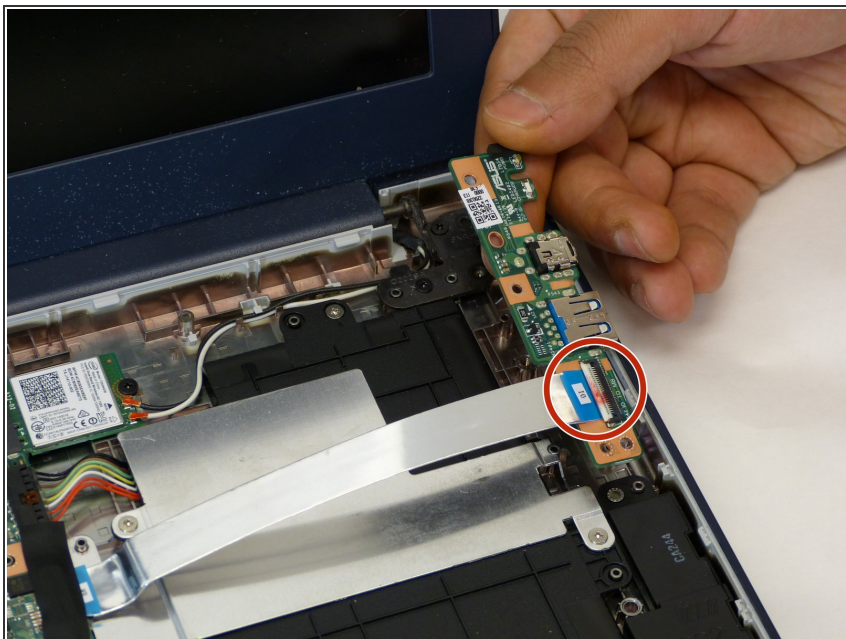
- Disconnect the two cables that run from the keyboard to the motherboard and from the touch pad to the motherboard.
- ⓘ You may have to use a spudger to lift open the respective latches.

Step 4 — Daughterboard



- Remove both Phillips #1 4.5 mm screws from the daughterboard.

Step 5



- Gently remove the thin band from the daughterboard. You may have to use a thin blade or spudger to lift the silver clip to release the band.

To reassemble your device, follow these instructions in reverse order.