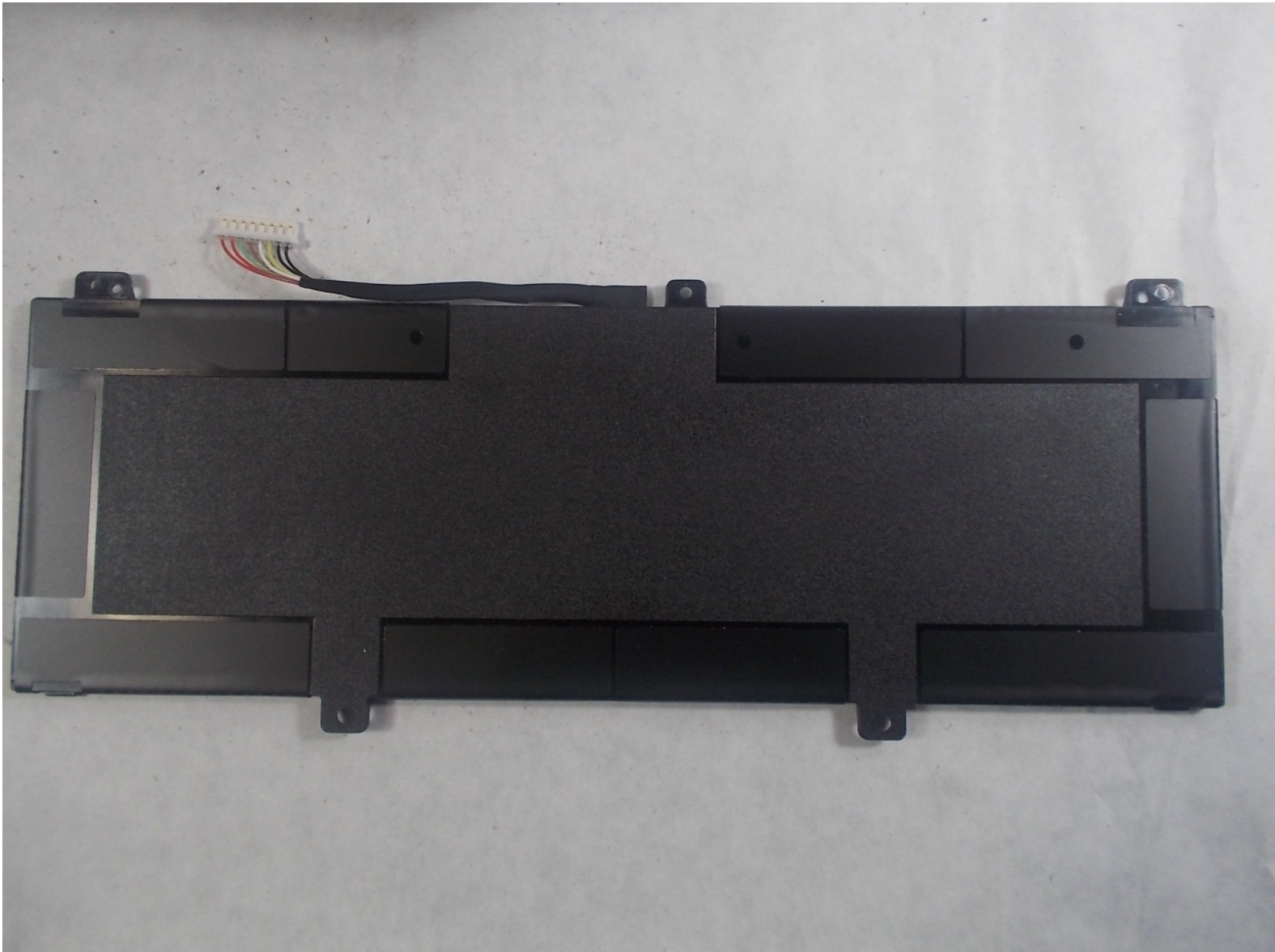




# Asus Chromebook C213SA-YS02 Battery Replacement

Replacing the battery on the Asus Chromebook C213SA-YS02.

Written By: nathan



## INTRODUCTION

When replacing the Asus Chromebook C213SA-YS02 battery, it is necessary to be careful when prying up the keyboard and back-plate. There are plastic hinges that keep the device together that can be snapped if one is not careful. The battery, in any device, wears down after a couple of years, causing battery life to decrease dramatically as time goes on. Replacing a battery is a more affordable solution than going out and buying a new laptop and it is less cumbersome than keeping the laptop plugged in to charge.

Before one does this though, check to see what background apps, processes, and other device functions may be lowering the battery performance, for that may be the problem and the battery itself may not need to be changed.

---

### TOOLS:

- [Phillips #00 Screwdriver](#) (1)
  - [iFixit Opening Tools](#) (1)
  - [Tweezers](#) (1)
-

## Step 1 — Keyboard



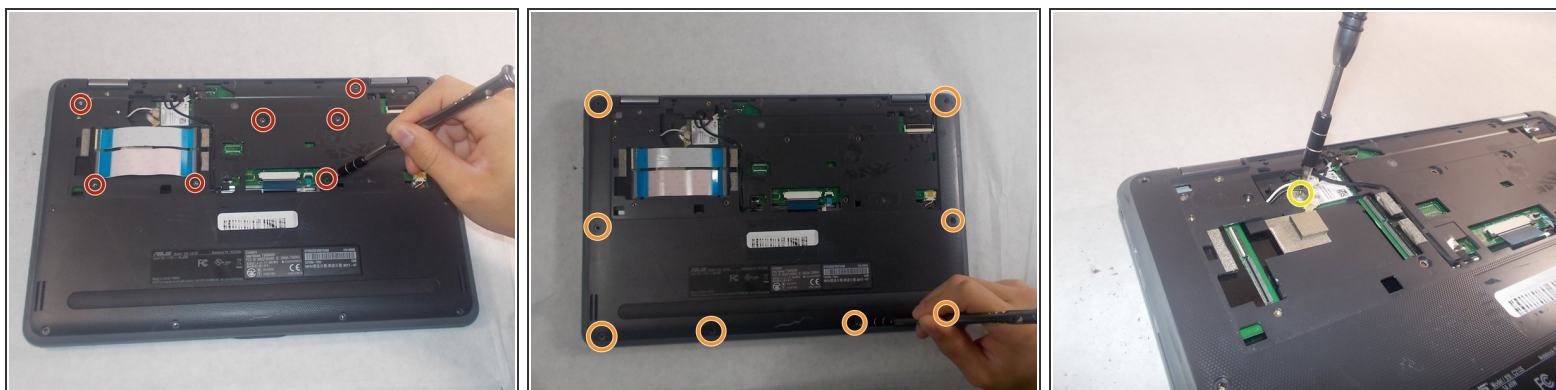
- Power off the device by pressing and holding the power button on the side of the device.
- Remove the power cable from the back of the device (if applicable).
- ⚠ Do not move forward if your device is still on. This can cause harm to you and the device!

## Step 2



- Place the closed device on the table so that the back cover is facing up.
- Remove the one black 4mm Phillips #00 screw on the back cover.
- Place the iFixit opening tool in the slot and lift up the cover.
- Slide the iFixit opening tool around the outside of the cover to remove it.

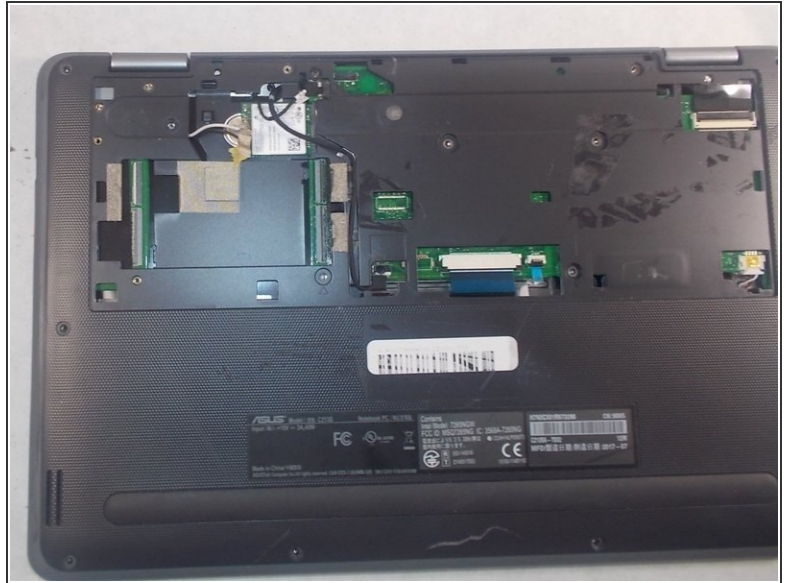
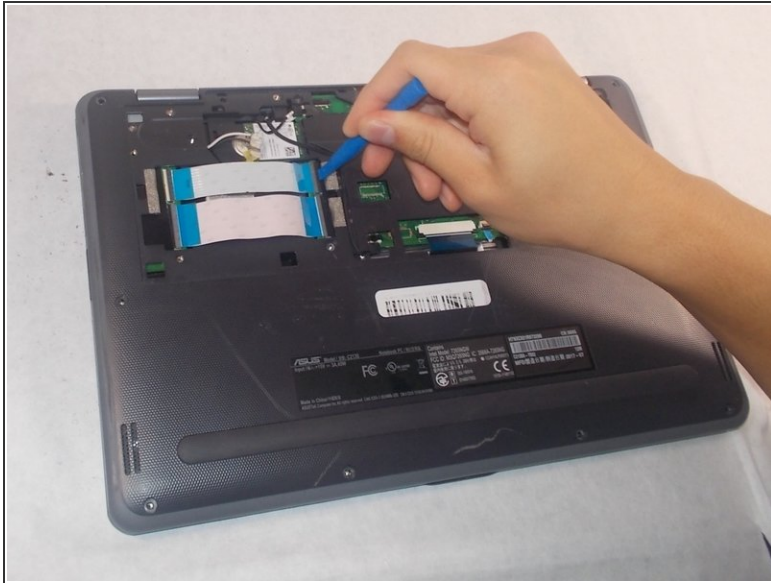
## Step 3



- Remove the seven black 4mm Phillips screws underneath the back cover.
- Remove the eight black 7mm Phillips #00 screws along the edge of the device.
- Remove the single silver 2mm Phillips #00 screw from the top of the Wi-Fi card.
- Carefully pull the white and black wires out of the card using tweezers.
- Remove the Wi-Fi card.



## Step 4



- Unhook the two ribbon cables by using the iFixit opening tool to lift the black lock mechanisms up.
- Slide the blue ribbon out of the lock mechanism.
- Repeat these steps for both sides of each blue ribbon.

## Step 5



- Using your iFixit opening tool, slide the black lock mechanism toward the serial label.
- Repeat the step on the opposite side of the cable.
- Slide the blue cable out of the port using a pair of tweezers.

## Step 6



- Remove the touchpad cable by lifting the black lock mechanism up by using your iFixit opening tool.
- Gently slide the cable out of its port.

## Step 7



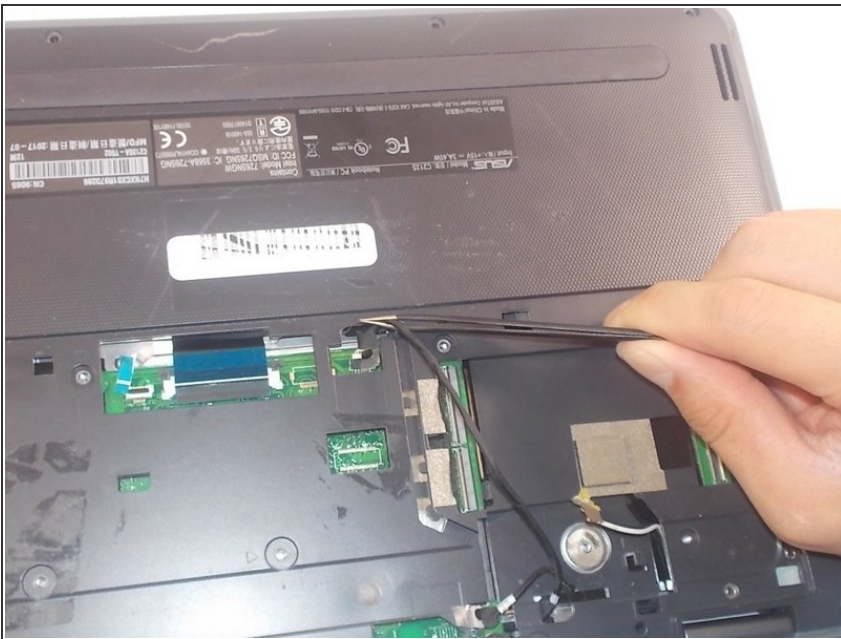
- Use the iFixit opening tool to release both ends of the double male end of the speaker cable.
- Disconnect the speaker cable from the port.

## Step 8



- Disconnect the black LCD cable directly above the hinges of the device by using an iFixit opening tool to lift up the black lock.
- Slide the black LCD cable out of the connection port.

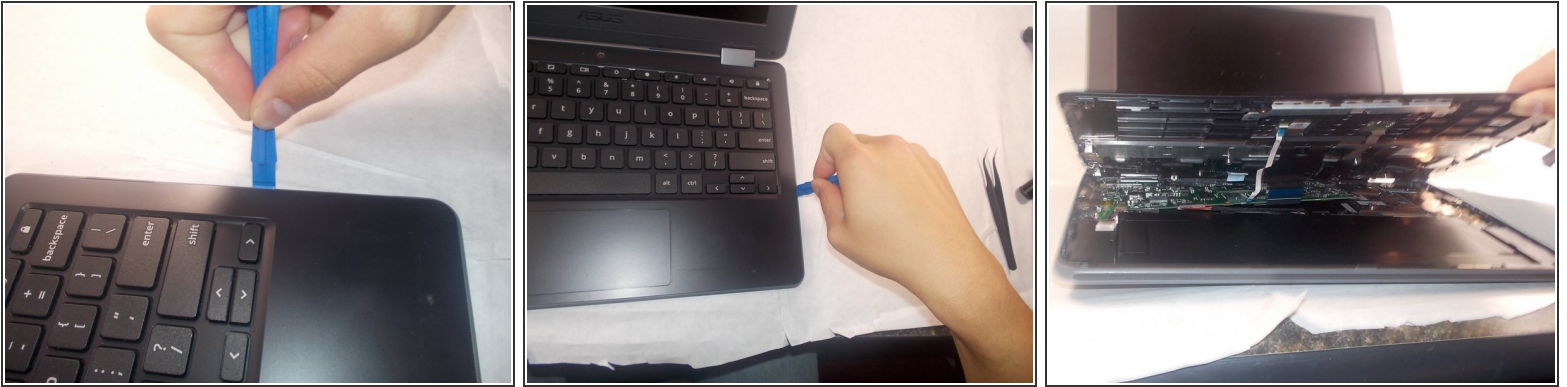
## Step 9



- Disconnect the black camera cable between the keyboard cable and the two blue ribbons which have been disconnected.
- Using the tweezers, grab the wire end of the cable and carefully pull it away from the connection port.
- Loosely place the disconnected cable away from the connection port.



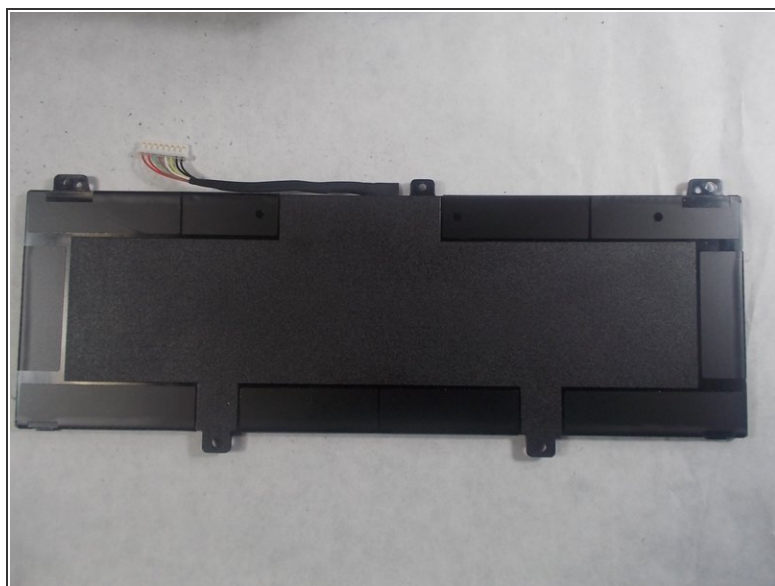
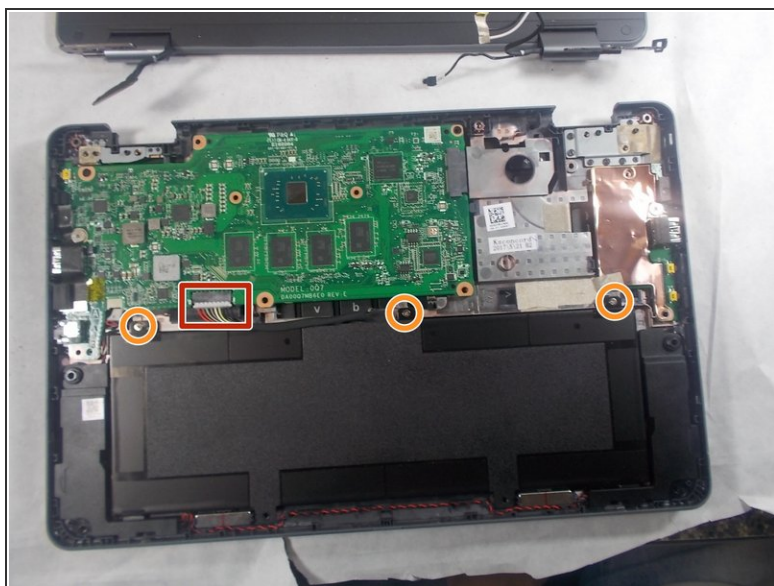
## Step 10



- Flip the device over and open up the LCD screen.
  - Using the iFixit opening tool, gently place the tool in between the back-plate and the keyboard and lift up.
  - Slide the tool around the outside of the keyboard and lift up the tool while moving it around the boundary of the keyboard.
- ⚠ Be careful not to jam the tool deep into keyboard. This could cause damage to the motherboard.
- Pull the keyboard away from the back-plate. Be careful the keyboard cable is not caught on the back-plate while performing this maneuver.



## Step 11 — Battery



- Remove the battery cable from the connection port using the iFixit opening tool to push the white tabs on either end of the male adapter.
- Remove the three 4mm Phillips #00 stainless steel screws.
- Remove the battery.

To reassemble your device, follow these instructions in reverse order.