



Asus Chromebook C213SA-YS02 Keyboard Replacement

How to replace an Asus Chromebook C213SA-YS02 keyboard.

Written By: nathan



INTRODUCTION

This Asus Chromebook C213SA-YS02 guide is for when troubleshooting has failed and the keyboard remains nonfunctional. This could be due to things such as broken keys and/or broken signal connections that can not be fixed. A purchase of the compatible keyboards and a few minutes of installation can get the laptop running again.



TOOLS:

- [Phillips #00 Screwdriver](#) (1)
 - [iFixit Opening Tools](#) (1)
 - [Tweezers](#) (1)
-

Step 1 — Keyboard



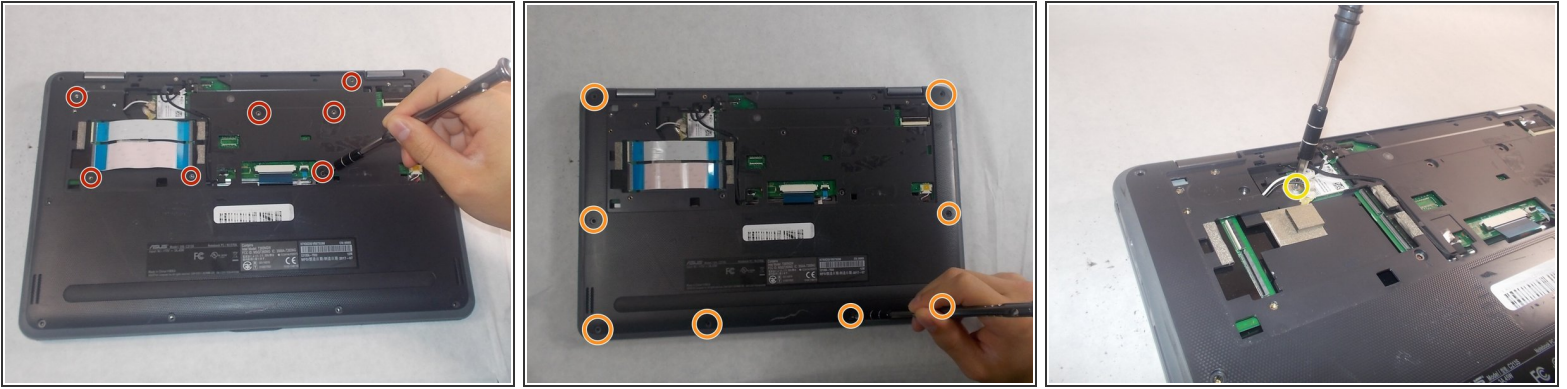
- Power off the device by pressing and holding the power button on the side of the device.
- Remove the power cable from the back of the device (if applicable).
- ⚠ Do not move forward if your device is still on. This can cause harm to you and the device!

Step 2



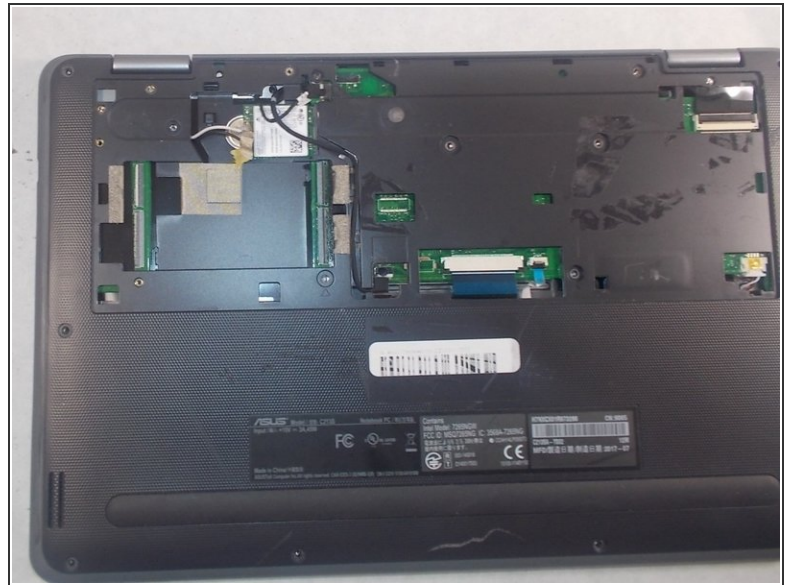
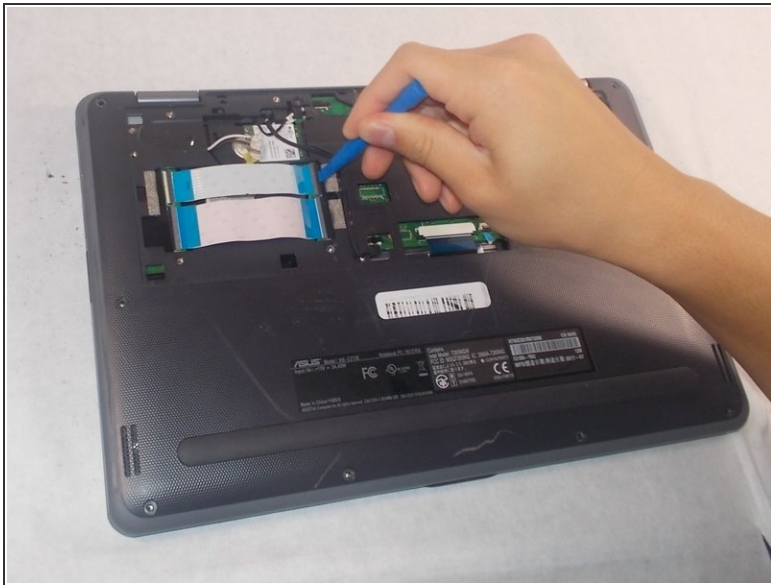
- Place the closed device on the table so that the back cover is facing up.
- Remove the one black 4mm Phillips #00 screw on the back cover.
- Place the iFixit opening tool in the slot and lift up the cover.
- Slide the iFixit opening tool around the outside of the cover to remove it.

Step 3



- Remove the seven black 4mm Phillips screws underneath the back cover.
- Remove the eight black 7mm Phillips #00 screws along the edge of the device.
- Remove the single silver 2mm Phillips #00 screw from the top of the Wi-Fi card.
- Carefully pull the white and black wires out of the card using tweezers.
- Remove the Wi-Fi card.

Step 4



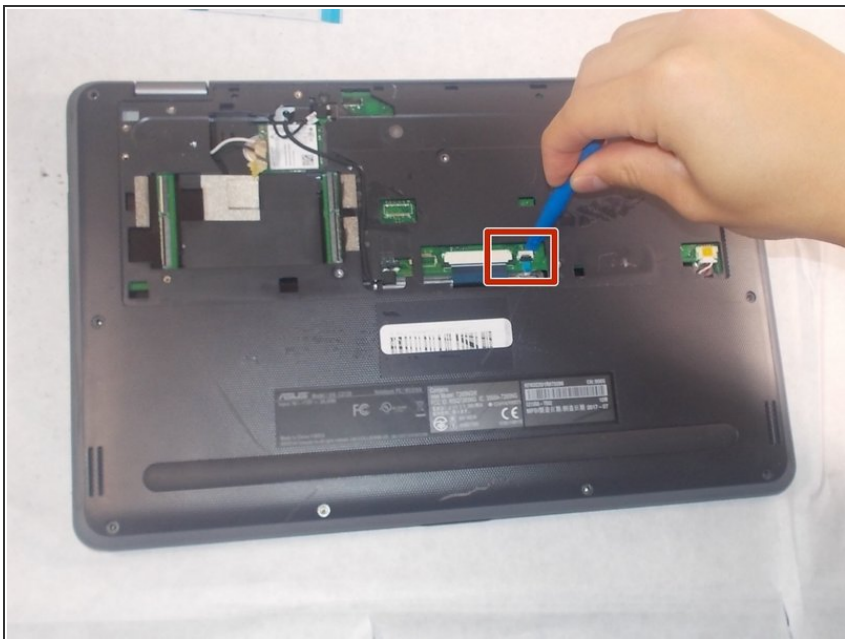
- Unhook the two ribbon cables by using the iFixit opening tool to lift the black lock mechanisms up.
- Slide the blue ribbon out of the lock mechanism.
- Repeat these steps for both sides of each blue ribbon.

Step 5



- Using your iFixit opening tool, slide the black lock mechanism toward the serial label.
- Repeat the step on the opposite side of the cable.
- Slide the blue cable out of the port using a pair of tweezers.

Step 6



- Remove the touchpad cable by lifting the black lock mechanism up by using your iFixit opening tool.
- Gently slide the cable out of its port.

Step 7



- Use the iFixit opening tool to release both ends of the double male end of the speaker cable.
- Disconnect the speaker cable from the port.

Step 8



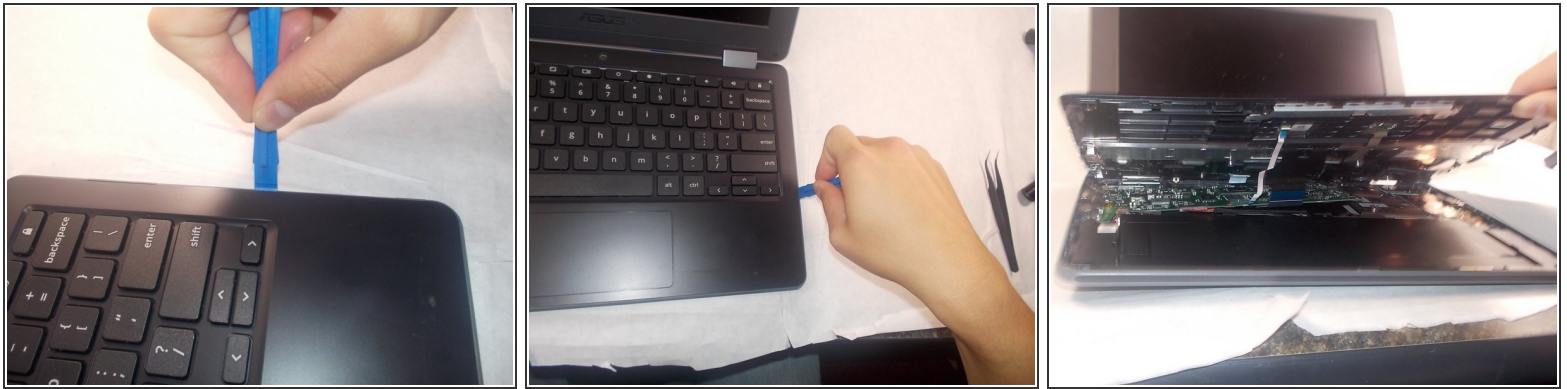
- Disconnect the black LCD cable directly above the hinges of the device by using an iFixit opening tool to lift up the black lock.
- Slide the black LCD cable out of the connection port.

Step 9



- Disconnect the black camera cable between the keyboard cable and the two blue ribbons which have been disconnected.
- Using the tweezers, grab the wire end of the cable and carefully pull it away from the connection port.
- Loosely place the disconnected cable away from the connection port.

Step 10



- Flip the device over and open up the LCD screen.
 - Using the iFixit opening tool, gently place the tool in between the back-plate and the keyboard and lift up.
 - Slide the tool around the outside of the keyboard and lift up the tool while moving it around the boundary of the keyboard.
- ⚠ Be careful not to jam the tool deep into keyboard. This could cause damage to the motherboard.
- Pull the keyboard away from the back-plate. Be careful the keyboard cable is not caught on the back-plate while performing this maneuver.

To reassemble your device, follow these instructions in reverse order.