



Asus Chromebook C300MA-DH02 Battery Replacement

This guide will show you how to replace your old battery with a brand new one.

Written By: Zachary Leonard



INTRODUCTION

The battery is responsible for supplying power to the computer when the power adapter is not being used. You should get 10-11 hours of run-time with your battery. If the time is significantly shorter you should replace the battery even if it hasn't failed.



TOOLS:

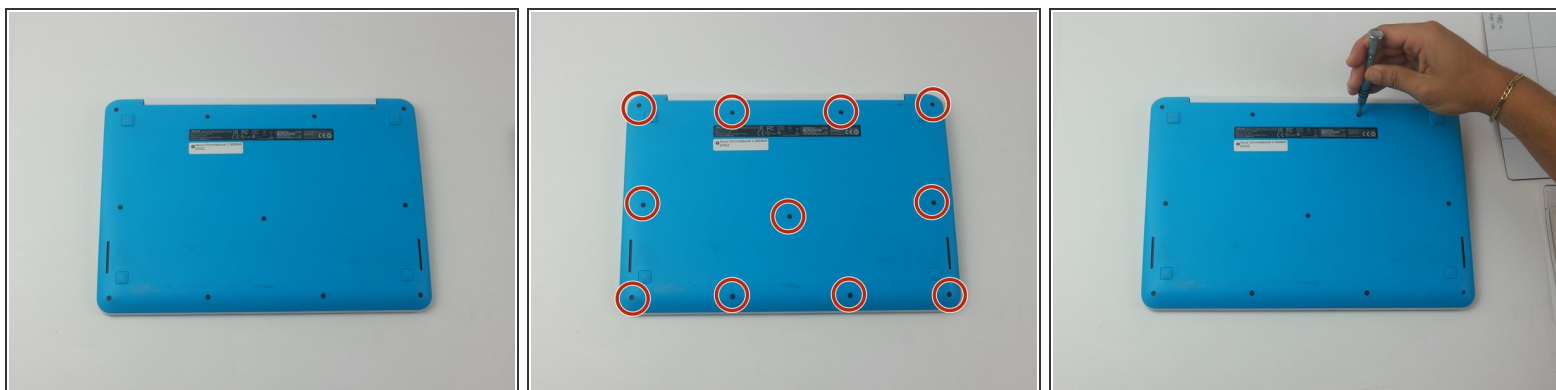
- [Phillips #000 Screwdriver](#) (1)
- [Spudger](#) (1)
- [iFixit Opening Tools](#) (1)



PARTS:

- [Asus Chromebook C300MA-DH02 Battery](#) (1)

Step 1 — Keyboard Panel



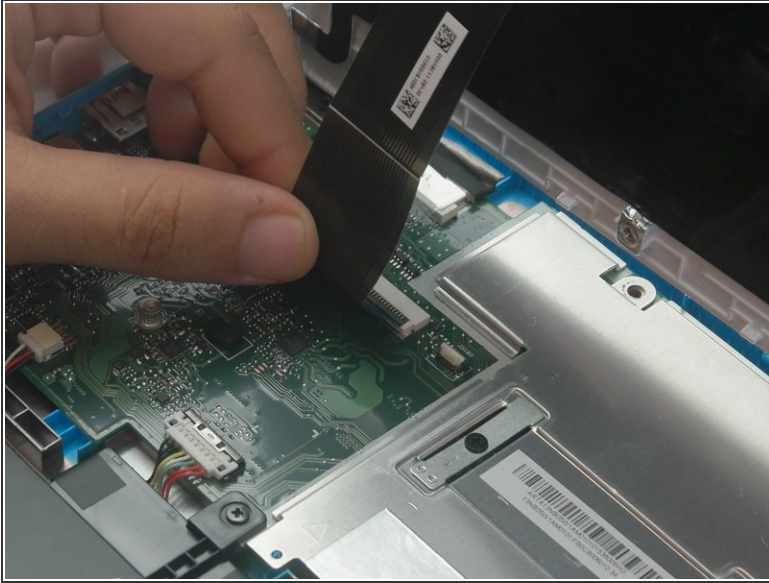
- Flip the Chromebook over so that the underside is facing up.
- Using the Phillips PH #000 screwdriver, remove the 11 "4mm" screws on the back of the device.

Step 2



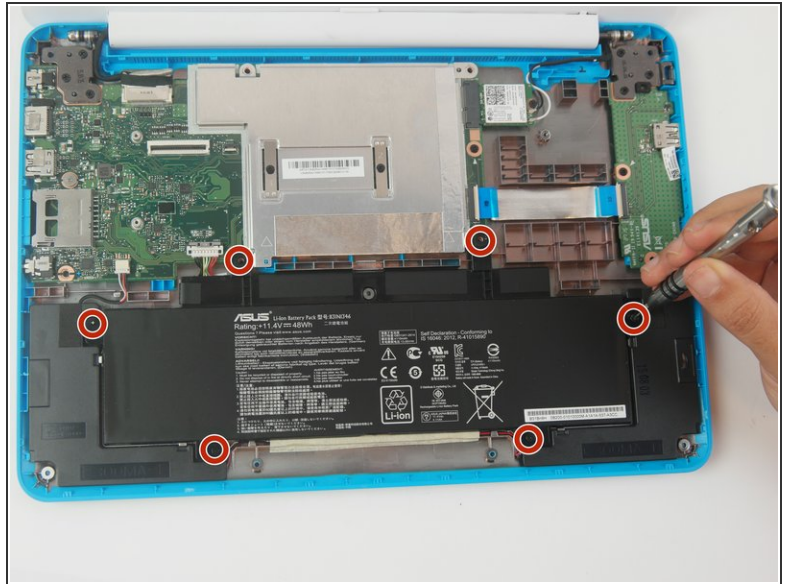
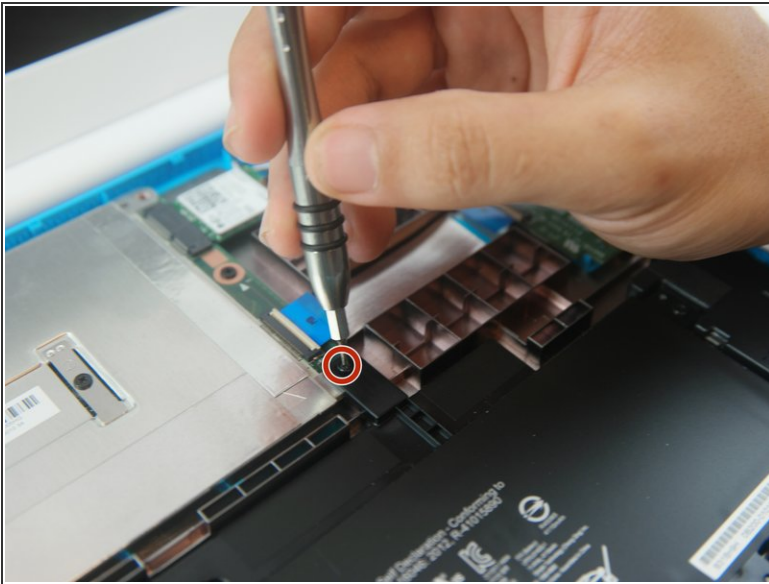
- Wedge the plastic opening tool between the bottom cover of the laptop and the keyboard panel.
- Apply pressure and move the plastic opening tool around the border of the laptop until it pops out.

Step 3



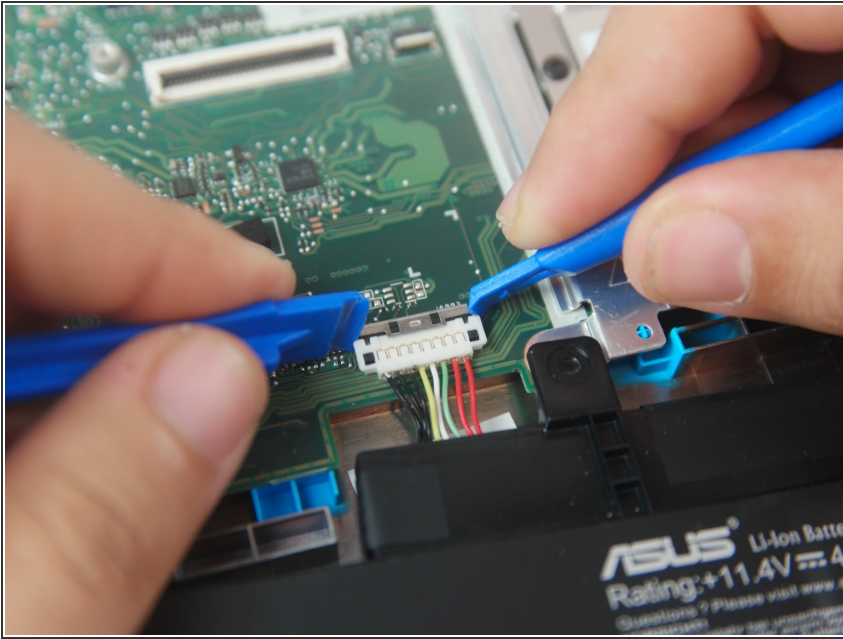
- Once the keyboard panel pops out, slowly move it upwards so that the keyboard connection is visible.
- Remove the keyboard connection from the motherboard by pulling it outwards from the connector.

Step 4 — Battery



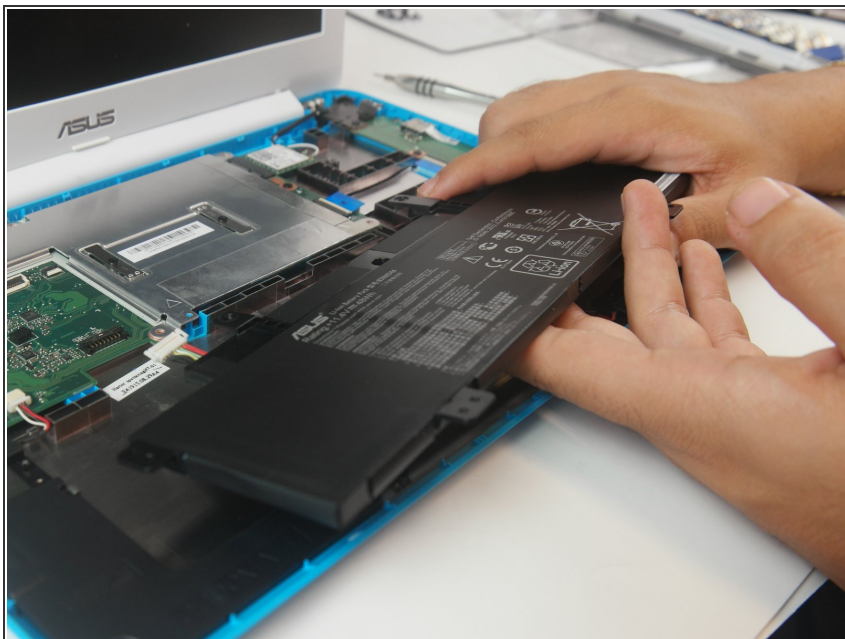
- Remove (6) six "4mm" screws that hold the battery using the Phillips #000 screwdriver.

Step 5



- Placing two plastic opening tools on each side of the battery connector and gently pull with an even force on both sides of the connector until the connector pops out.

Step 6



- ① Note: Your battery may have adhesive on the underside. If you cannot easily remove the battery you can use a hair dryer to evenly warm the glue.
- Remove the battery by applying even force on both sides.
- ① During reassembly, purchase of adhesive may be necessary.

To reassemble your device, follow these instructions in reverse order.