



Asus Chromebook C300MA-DH02 Display Replacement

The Display is responsible for showing images and interacting with you, the user. Replacing the Display is easier than you might expect.

Written By: Zachary Leonard



This document was generated on 2019-10-04 05:51:25 AM (MST).

INTRODUCTION

Your computer display is one of the most important parts of your device. Ranging in size and capabilities, the display is one of the main parts that gets upgraded or replaced depending on your needs.



TOOLS:

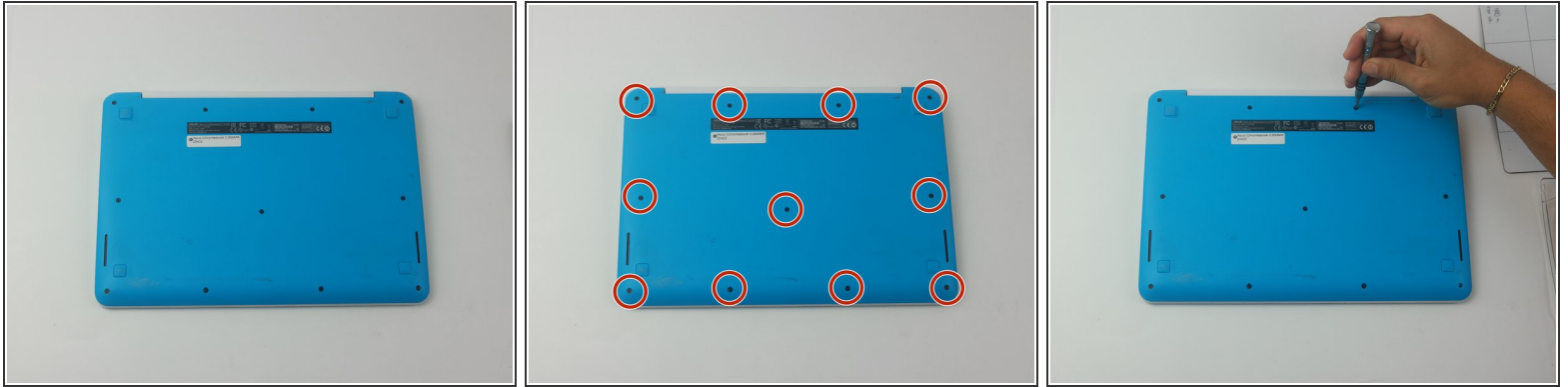
- [Phillips #000 Screwdriver](#) (1)
- [Spudger](#) (1)
- [Tweezers](#) (1)



PARTS:

- [Asus Chromebook C300MA-DH02 Display](#) (1)

Step 1 — Keyboard Panel



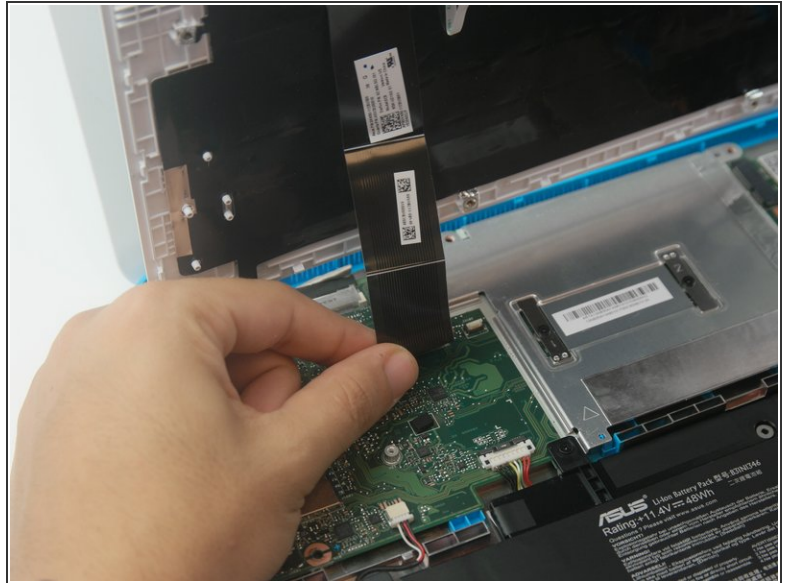
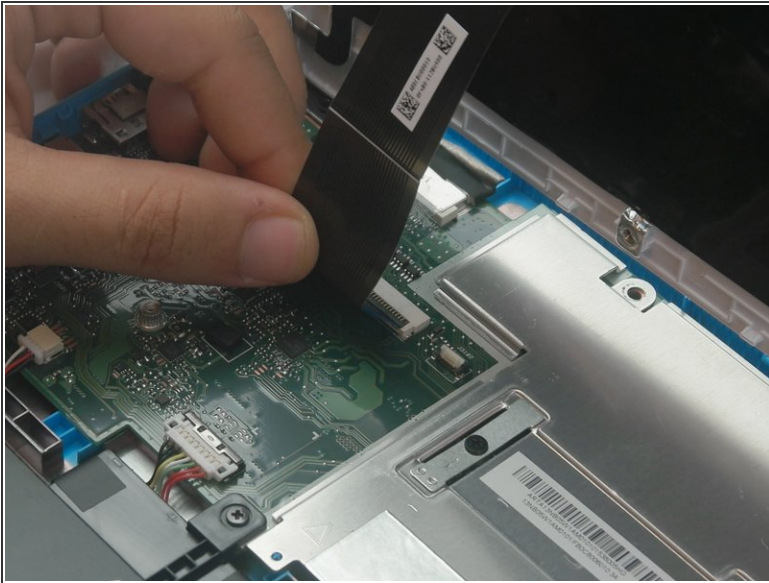
- Flip the Chromebook over so that the underside is facing up.
- Using the Phillips PH #000 screwdriver, remove the 11 "4mm" screws on the back of the device.

Step 2



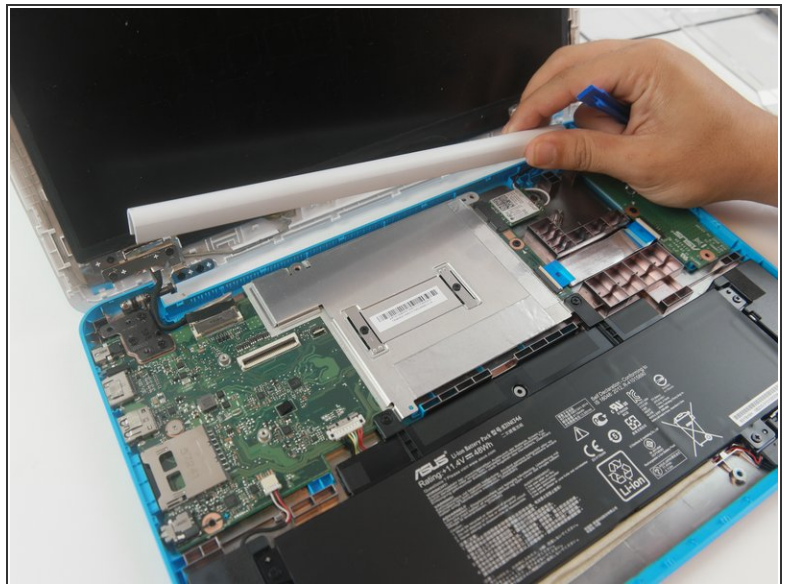
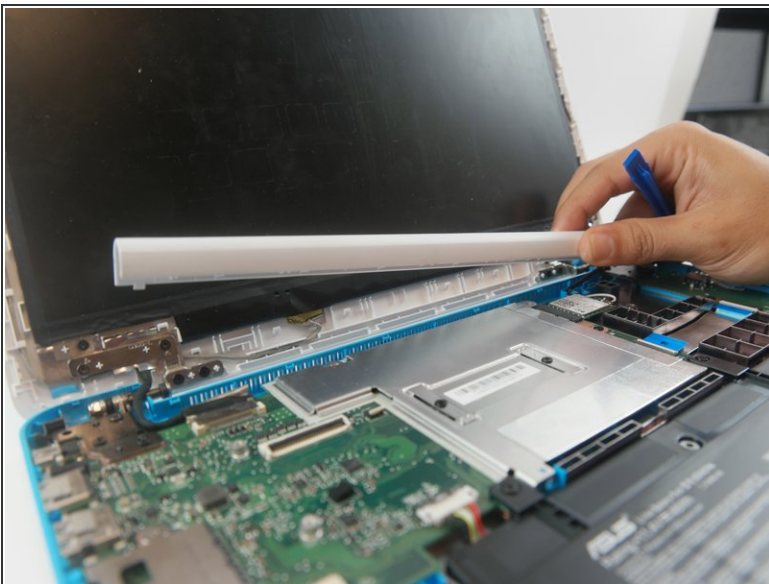
- Wedge the plastic opening tool between the bottom cover of the laptop and the keyboard panel.
- Apply pressure and move the plastic opening tool around the border of the laptop until it pops out.

Step 3



- Once the keyboard panel pops out, slowly move it upwards so that the keyboard connection is visible.
- Remove the keyboard connection from the motherboard by pulling it outwards from the connector.

Step 4 — Display



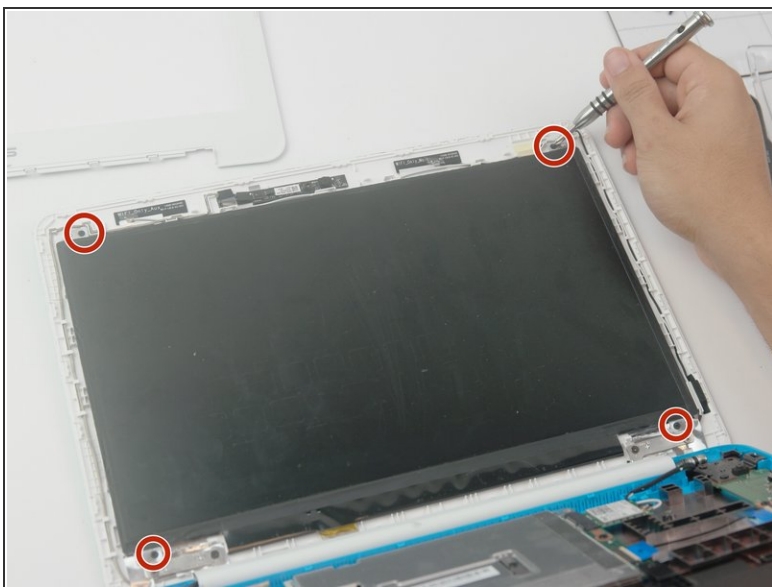
- Remove the hinge protector by using the plastic opening tool to gently lift it up. It should come up easily.

Step 5



- Using the plastic opening tool, separate the display cover bracket from the back of the display. Start from the top.

Step 6



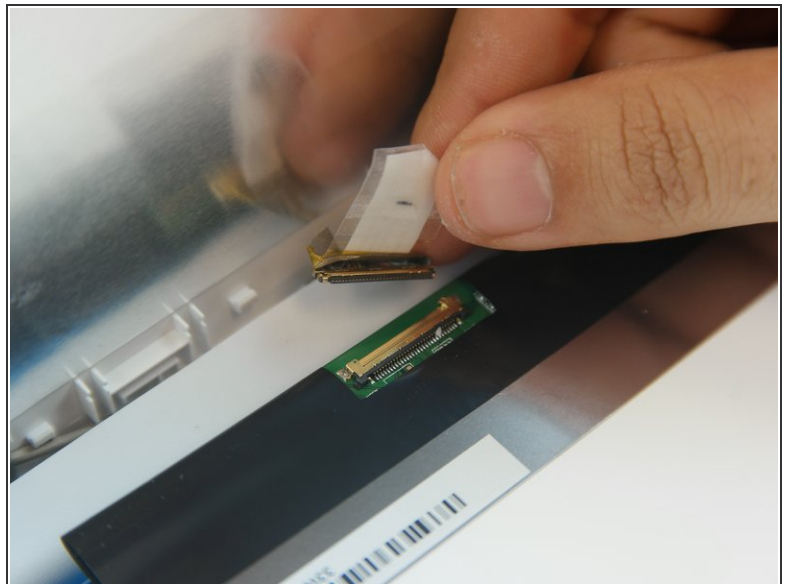
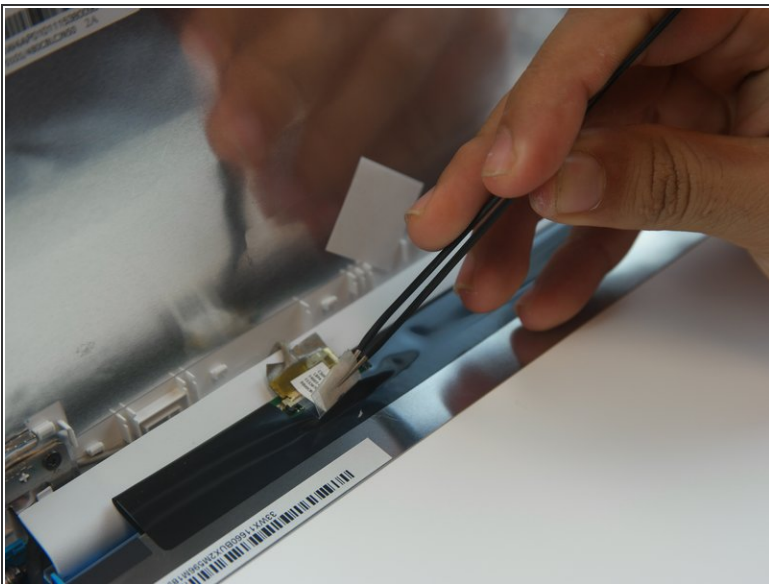
- Remove the (4) four "4mm" screws in each corner that hold the display using the Phillips #000 screwdriver.

Step 7



- Lower the display to allow access to connector in back.

Step 8



- Lift the tape covering the connector with the tweezers.
- Gently remove the display connector from the motherboard.

To reassemble your device, follow these instructions in reverse order.