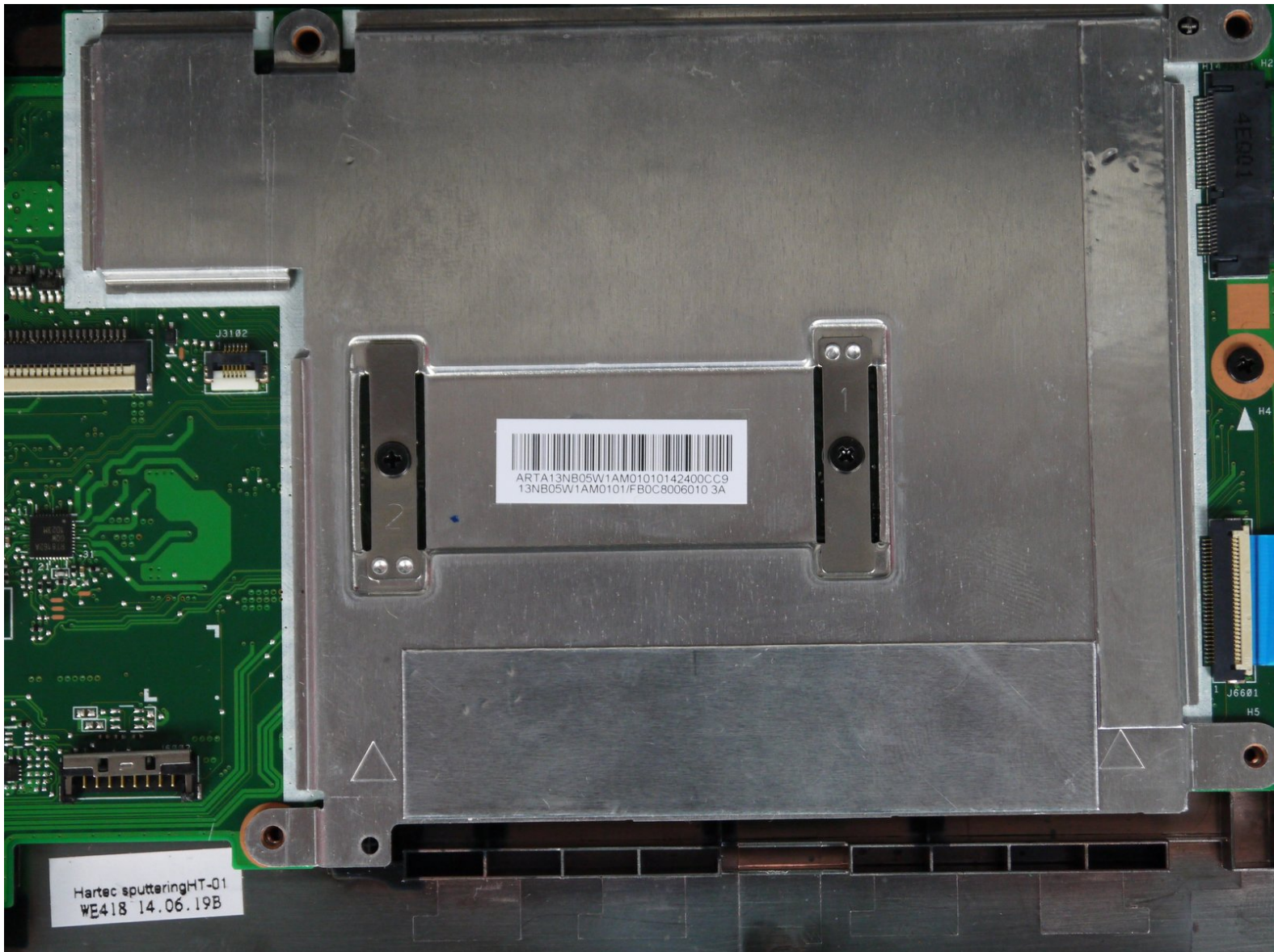




Asus Chromebook C300MA-EDU Thermal Paste Replacement

This guide will show how to effectively remove and replace the thermal paste from the Asus Chromebook C300MA-EDU.

Written By: Christopher Hart

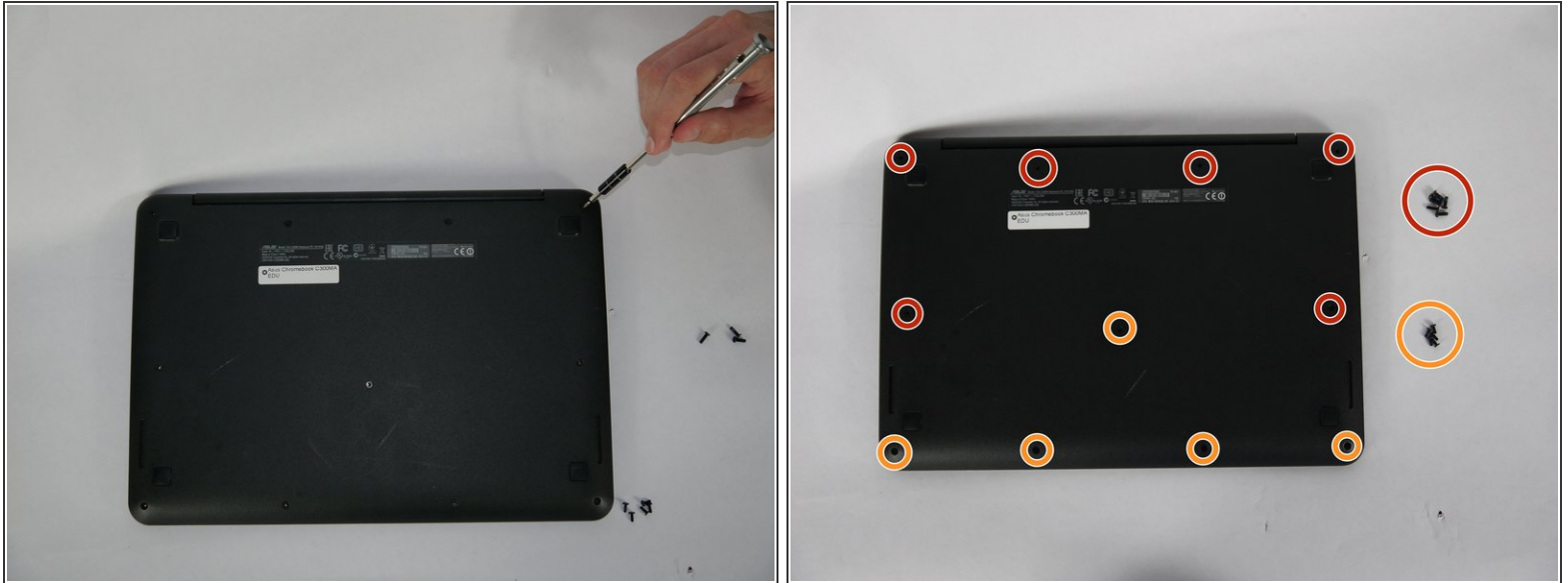




TOOLS:

- [iFixit Opening Tools](#) (1)
- [Spudger](#) (1)
- [Phillips #00 Screwdriver](#) (1)

Step 1 — Keyboard



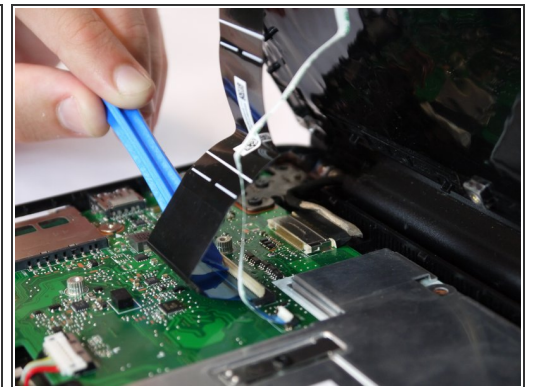
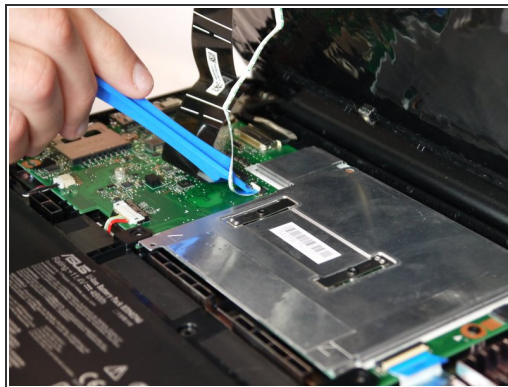
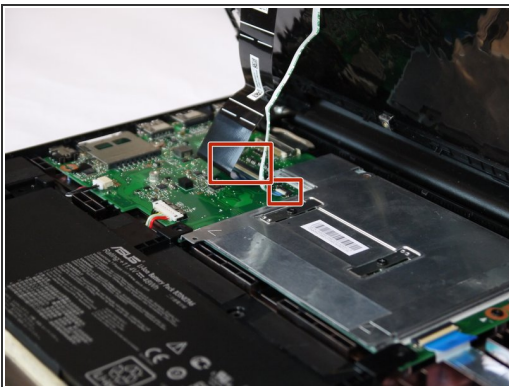
- Flip the Chromebook onto its back, where there are eleven screws.
- There are two variations of screws on the back panel:
 - Six 8.7mm screws.
 - Five 6.4mm screws.
- Using your screwdriver with the J00 Phillips Head tip, remove the screws by turning them counter clockwise.

Step 2



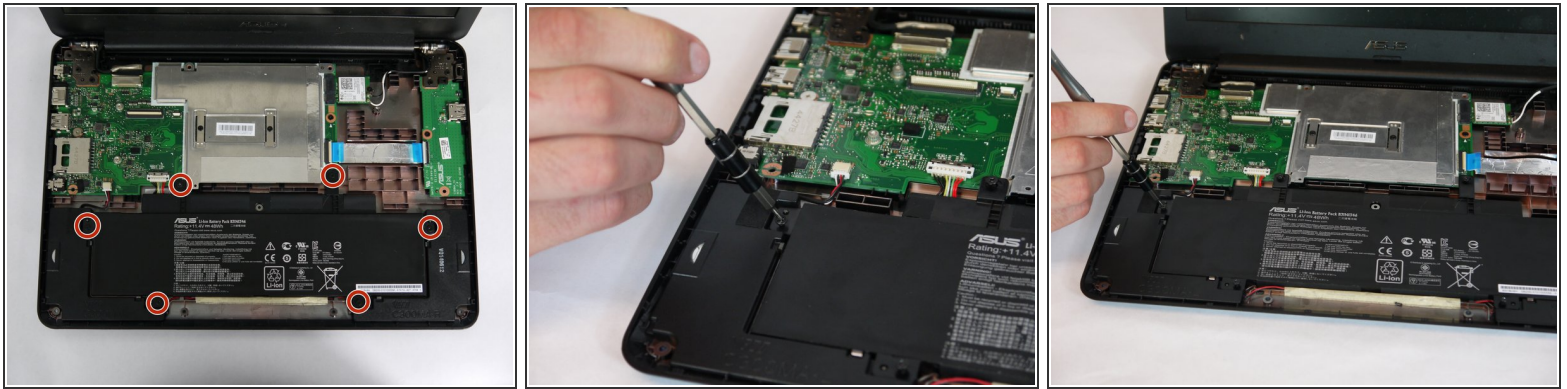
- Once the screws are removed, flip the Chromebook back over.
- Gently remove the keyboard by starting to lift up on one corner with a plastic opening tool.
- Follow around the brim of the keyboard until it pops off.

Step 3



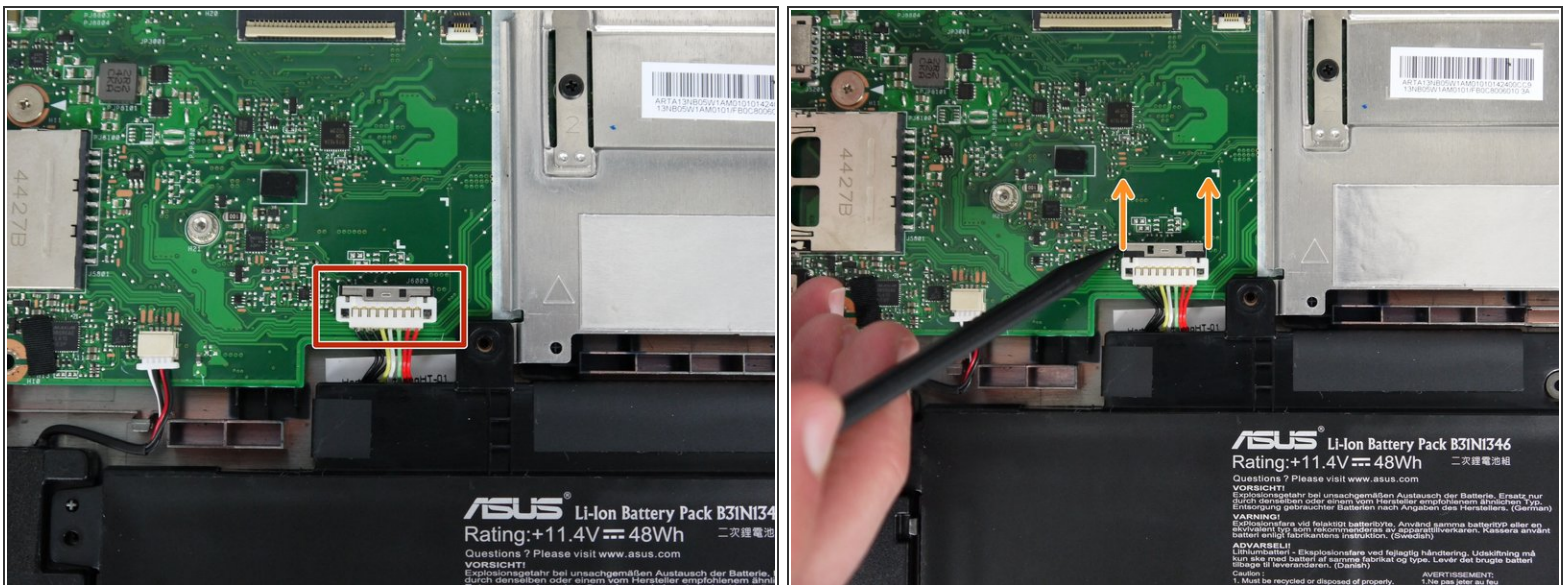
- Once you remove the keyboard, it will be connected to the CPU with two tabbed connections.
- Release the connections from the tabs gently by flipping the white flaps up until disconnected.
- You can now pull the ribbons out from the board and remove the keyboard.

Step 4 — Battery



- Once the keyboard is removed, the battery is located on the bottom portion of the shell.
- The battery is held in with six 6.5mm screws on opposing sides.

Step 5



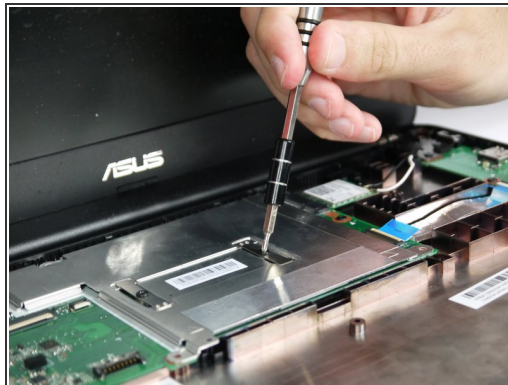
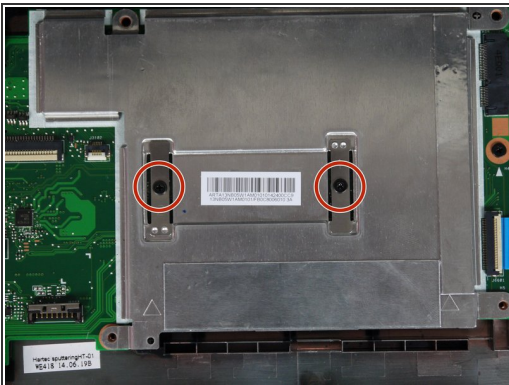
- The battery is now held in with a tabbed connection to the CPU on the left side of the board. On the tabbed connection, there is a silver plate.
- Gently push on the silver plate towards the screen until the plastic connection is free.
- The tabbed connection should now slide out backwards.

Step 6



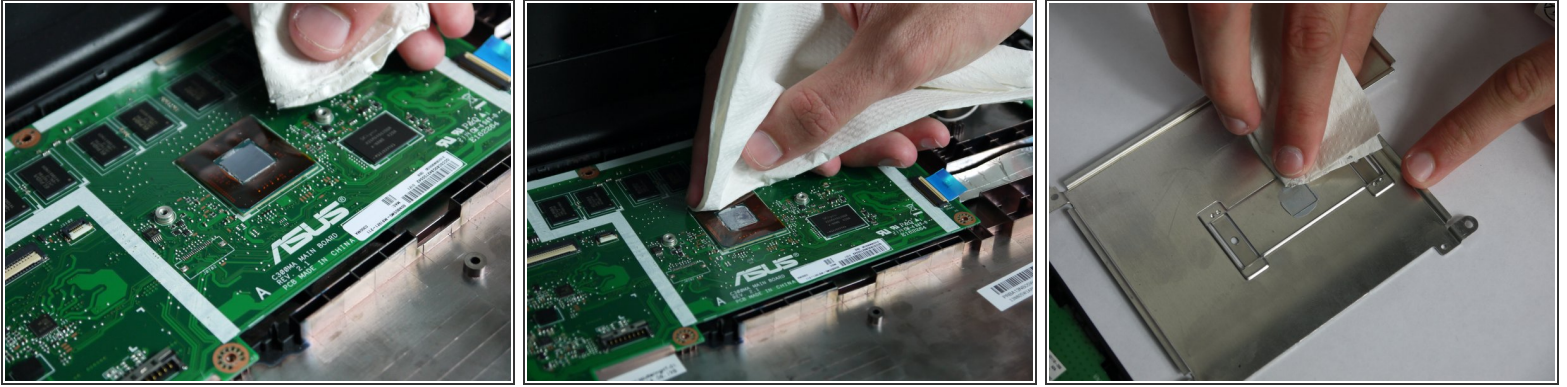
- At this point, using the plastic removal tool, lift the battery out of the shell.

Step 7 — Thermal Paste



- The metal plate is held in by two 3.4mm Phillip head screws.
- Remove them by turning the screws counter clockwise.
- Lift the plate off using a plastic opening tool or by hand.

Step 8



- The existing thermal paste should now be exposed.
- Using a paper towel, gently wipe off the existing thermal paste from both the CPU and the metal cover.

Step 9



- Once you remove the residue, apply a small amount of thermal paste in one area on the CPU.
- ⓘ The amount of thermal paste applied should be the size of a circle with a diameter of 2mm.
- ⚠ Applying too much thermal paste may result in the system not ventilating properly, leading to overheating issues.
- Place metal plate back on. This will naturally spread the thermal paste across the CPU.
- The thermal paste is now replaced.

To reassemble your device, follow these instructions in reverse order.