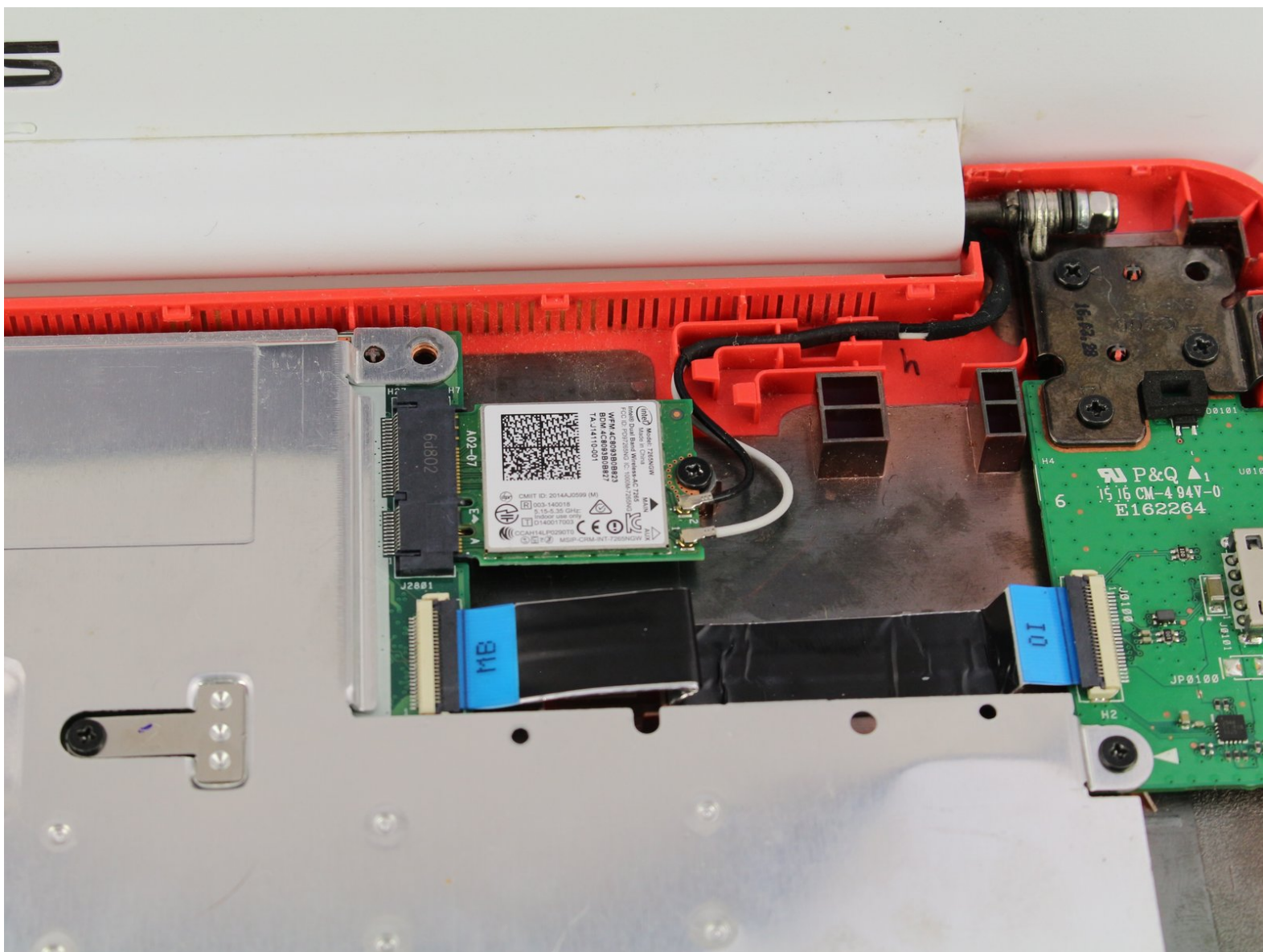




Asus Chromebook C300SA-DS02 WiFi Card Replacement

Refer to this guide if you need to replace your Asus Chromebook C300SA-DS02 WiFi (wireless) card.

Written By: Sarah Westberg



INTRODUCTION

If your Asus Chromebook C300SA-DS02 WiFi card has been damaged, use this guide to replace it. Prior to replacing the wireless card, you will need to remove the back cover and keyboard and disconnect the battery for safety.




TOOLS:

- [iFixit Opening Tools](#) (1)
 - [Phillips #0 Screwdriver](#) (1)
-

Step 1 — Keyboard



 Power the laptop off and make sure the charger is unplugged before starting.

- Remove the eight 8.0mm Phillips #0 screws on the bottom of the laptop.
- Remove the three 6.0mm Phillips #0 screws.

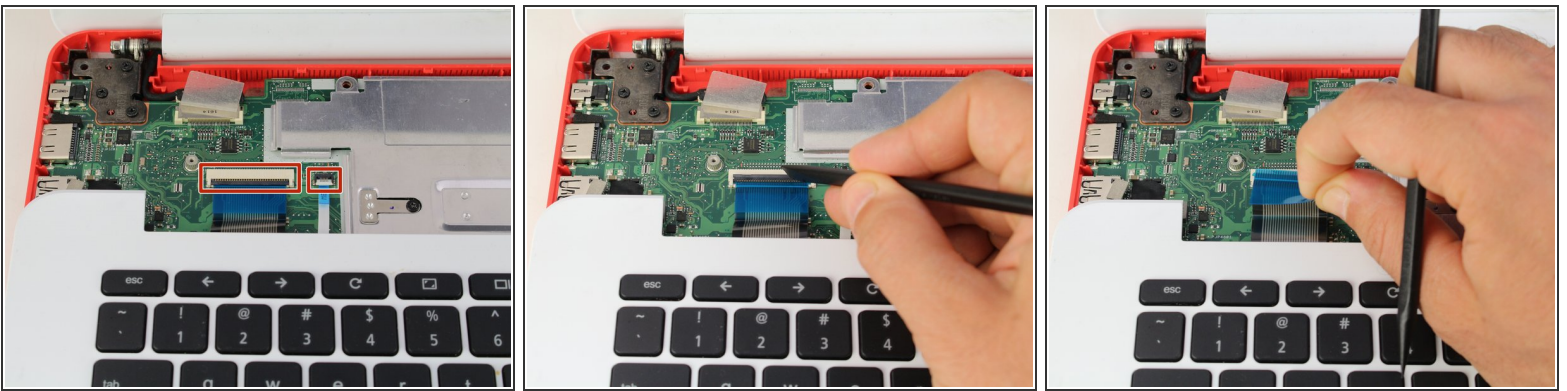
Step 2



- Open the laptop.
- Using an iFixit opening tool, pry along the edges of the keyboard.
- Lift the keyboard and slide it gently towards you.

⚠ Do not completely remove the keyboard. It is still connected to the back panel by a pair of ribbon cables.

Step 3



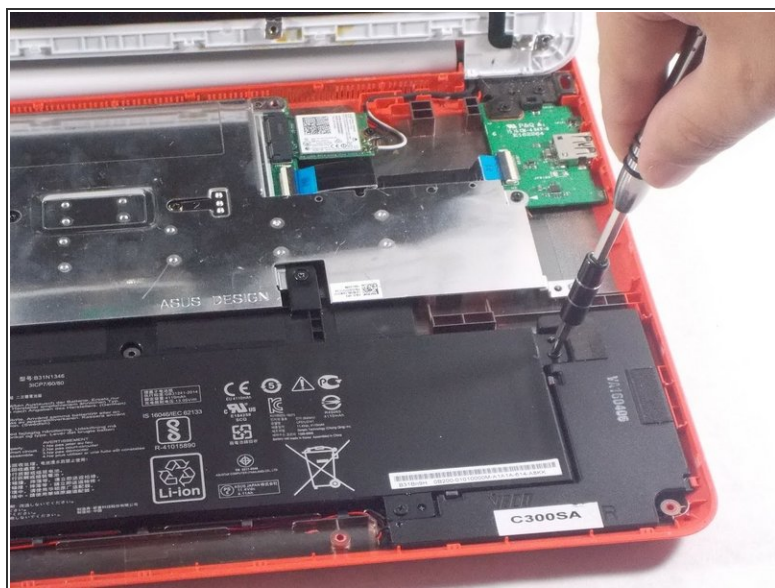
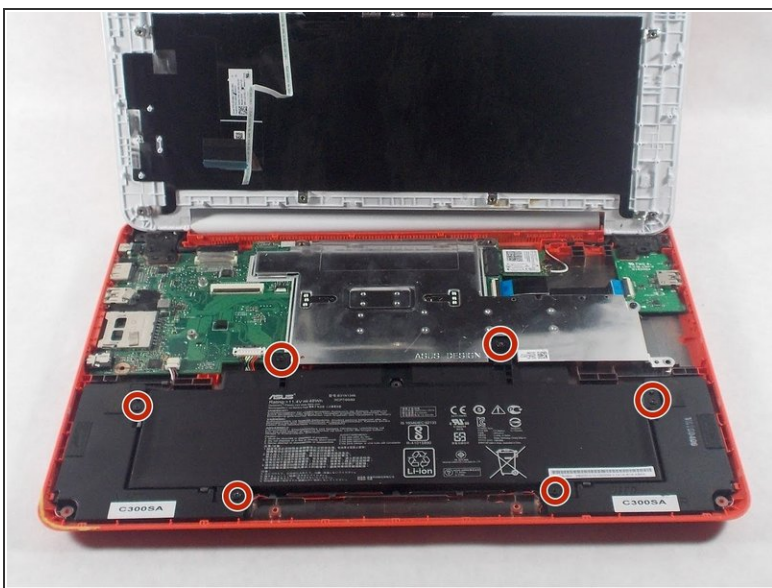
- Disconnect the two ZIF connectors by prying up the locking bar with a spudger and removing the ribbon cable.

Step 4



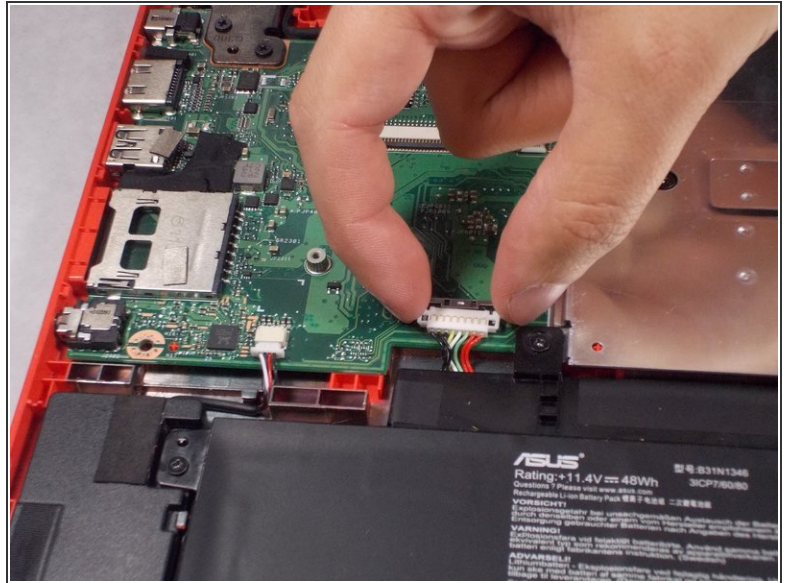
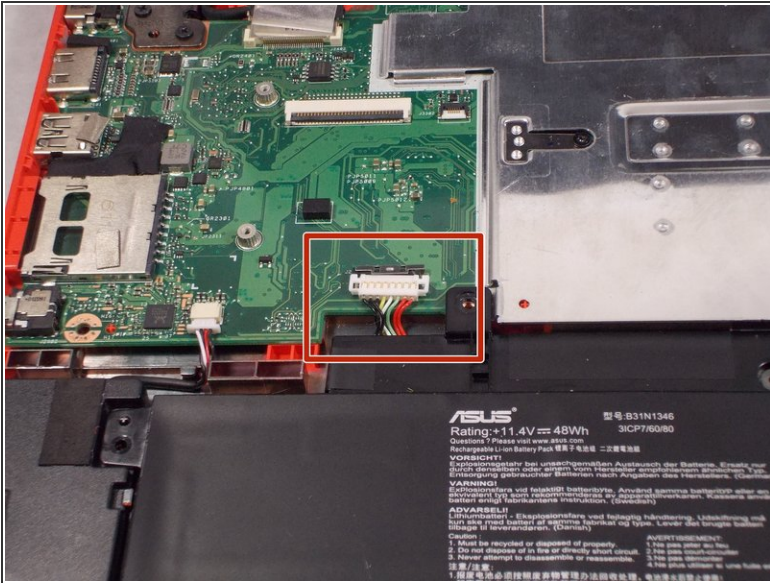
- Remove the keyboard from the laptop.

Step 5 — Battery



- Remove the six 5.6mm Phillips #0 screws around the battery.

Step 6



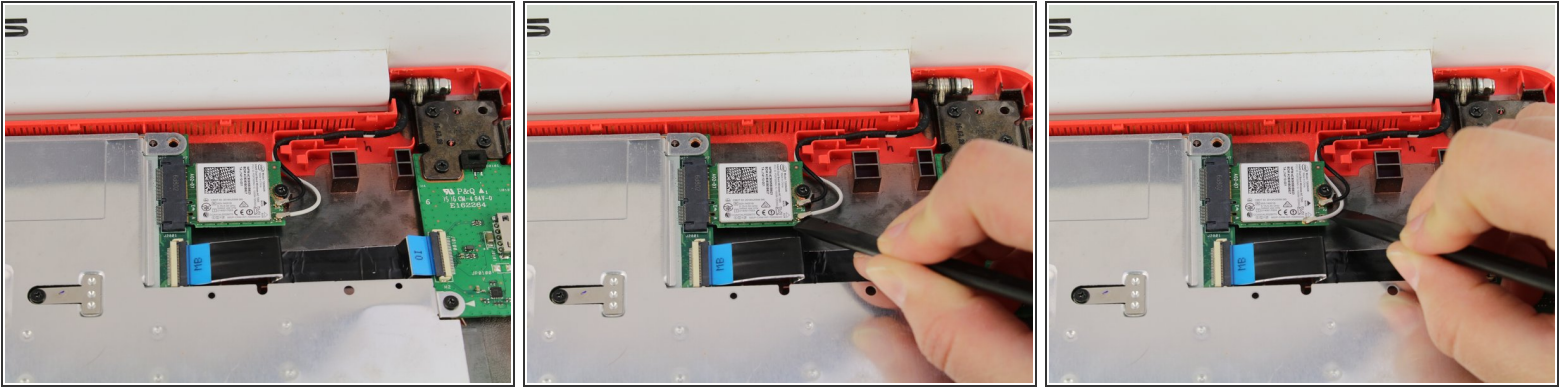
- Using your thumb and index finger, pinch the multi-color cable and disconnect it from the motherboard.

Step 7



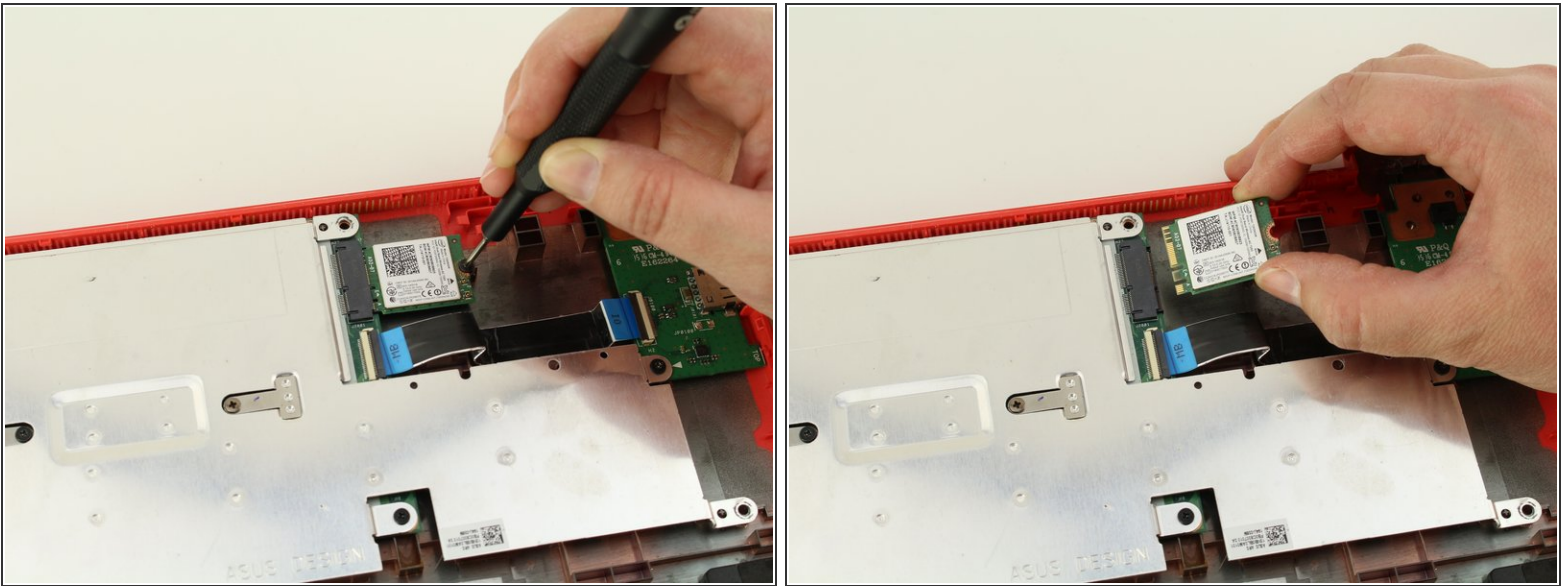
- Lift the battery out of the laptop.

Step 8 — WiFi Card



- Use the spudger to pop the black and white coaxial WiFi cables up from the WiFi card.

Step 9



- Remove the one 3.6mm Phillips #0 screw from the WiFi card.
- Pull and lift the WiFi card away from the motherboard.

To reassemble your device, follow these instructions in reverse order.