



Asus Eee PC 1000HA Hard Drive Replacement

This guide will show you how to replace the hard drive on an Asus Eee Pc 1000HA.

Written By: Ashlee Stickle



INTRODUCTION

This guide will show you how to replace the hard drive. Please see the proper list of tools so you are prepared.



TOOLS:

- [Phillips #00 Screwdriver](#) (1)
- [Magnetic Project Mat](#) (1)
- [iFixit Opening Tools](#) (1)



PARTS:

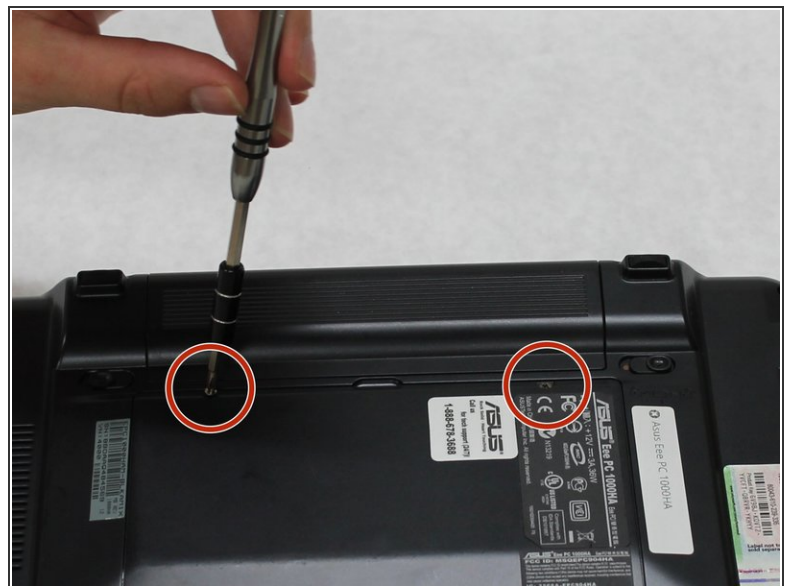
- [Replacement Hard Drive](#) (1)

Step 1 — Hard Drive



- Remove the battery before working on your device. See this [LINK](#) for a step-by-step guide.
- Gently turn the laptop up side down so that the battery is facing away from you. The battery is outlined by the red rectangle in the picture to the left.

Step 2



- Use a #00 Phillips Head screw driver to remove the two 1/4" screws that hold the back panel in place.

Step 3



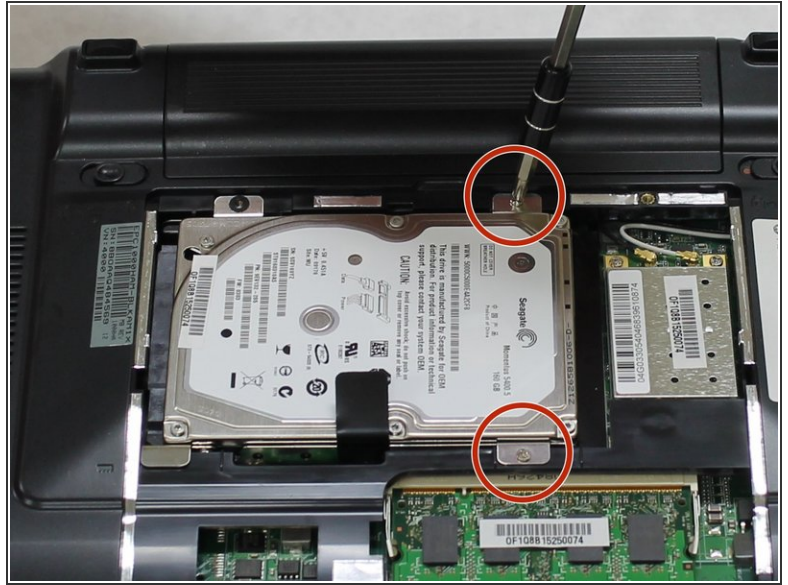
- Place the blue plastic 1/4" opening tool into the small indentation and gently pry the back panel off.

Step 4



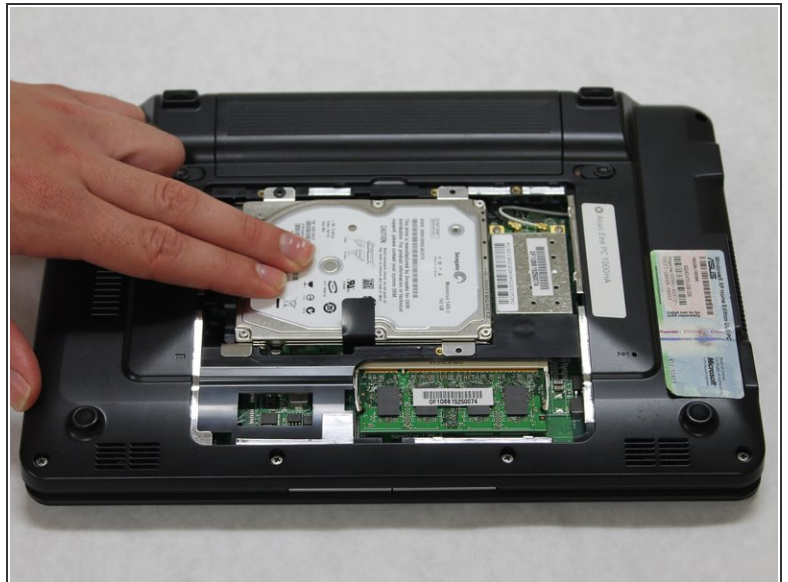
- Remove the back panel.
- The hard drive is shown by the orange marker.

Step 5



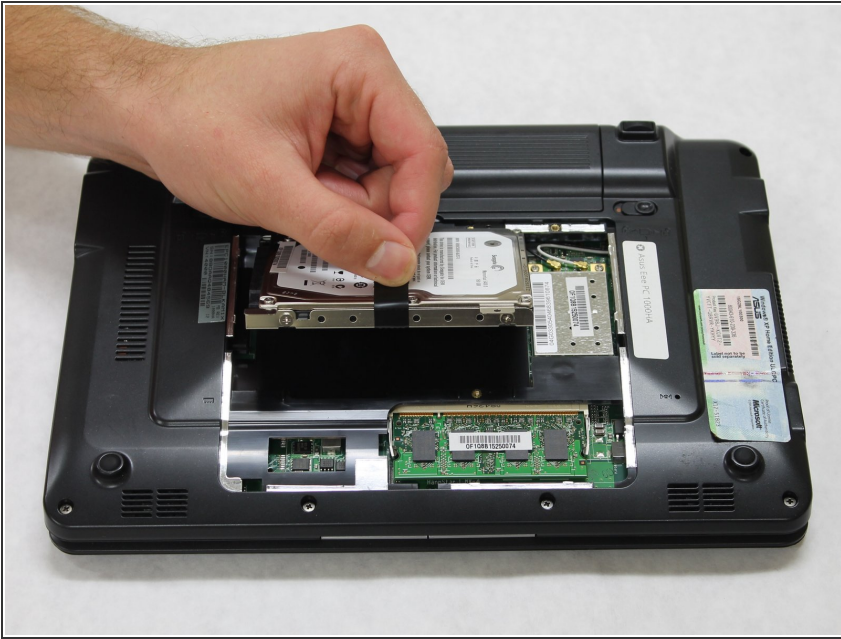
- Use the same, #00 Phillips Head screw driver to remove two 1/8" screws.

Step 6



- To remove the hard drive, slide it to the right.

Step 7



- Grab the black tab and lift up to remove the hard drive from the computer.

To reassemble your device, follow these instructions in reverse order.