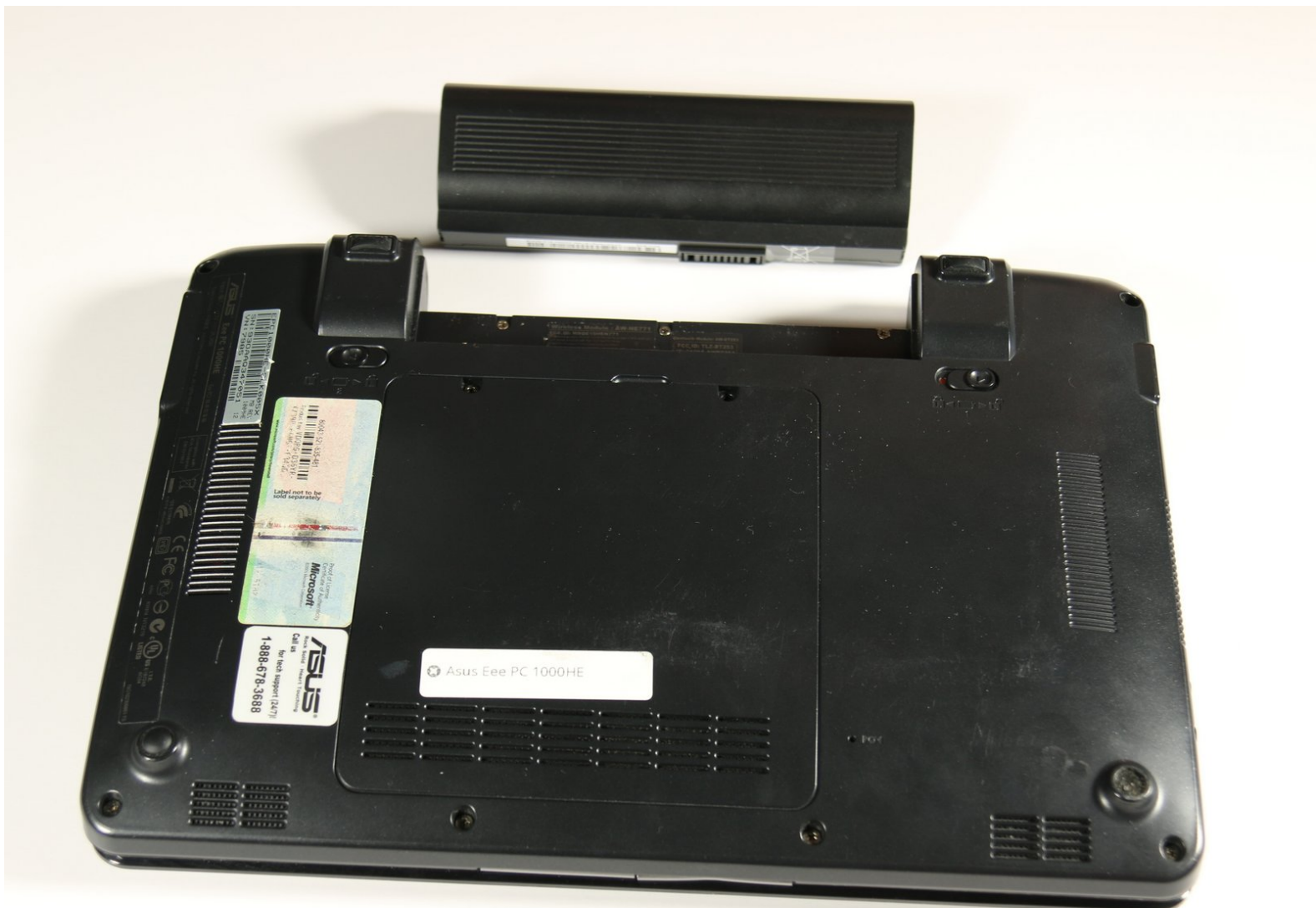




# Asus Eee PC 1000HE Battery Replacement

This guide is for removing and replacing the battery of your Asus EEE PC 1000HE.

Written By: Mike Glenn



## INTRODUCTION

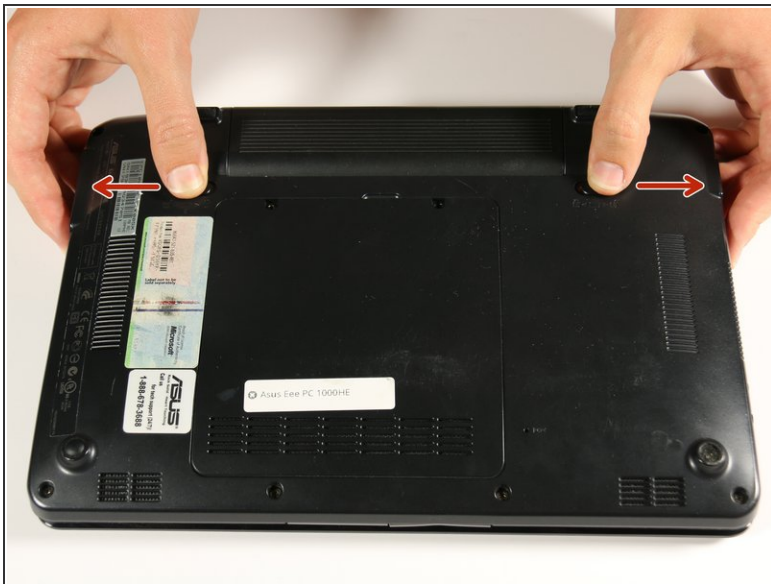
Follow this guide to replace your battery. This guide is also useful for temporarily removing your battery in order to safely work on other sections of your netbook.

## Step 1 — Battery



- Lay the laptop down with the bottom facing upwards.
- Locate the two battery lock slide tabs.

## Step 2



- Slide the tabs outward to unlock the battery.
- ⓘ The right tab will remain in the unlocked position while the left tab must be held.
- While holding the left tab outward, slide the battery away from you to remove it.

To reassemble your device, follow these instructions in reverse order.