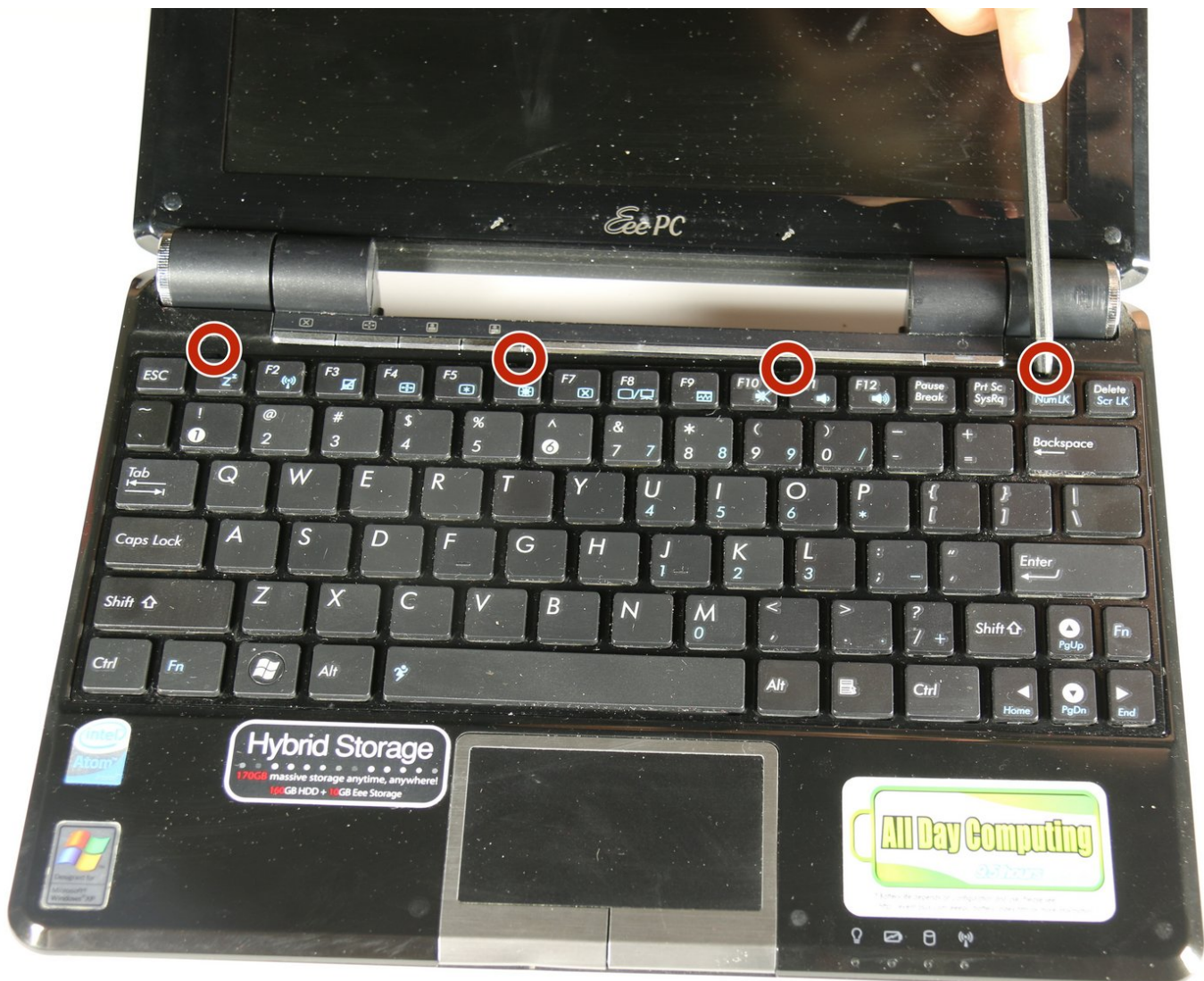




# Asus Eee PC 1000HE Keyboard Replacement

This guide will show you how to replace the keyboard of your Asus Eee PC 1000HE.

Written By: Mike Glenn



---

## INTRODUCTION

Follow this guide to replace the keyboard of your netbook. Removing the keyboard is also necessary to access many of the interior components of your device.



### TOOLS:

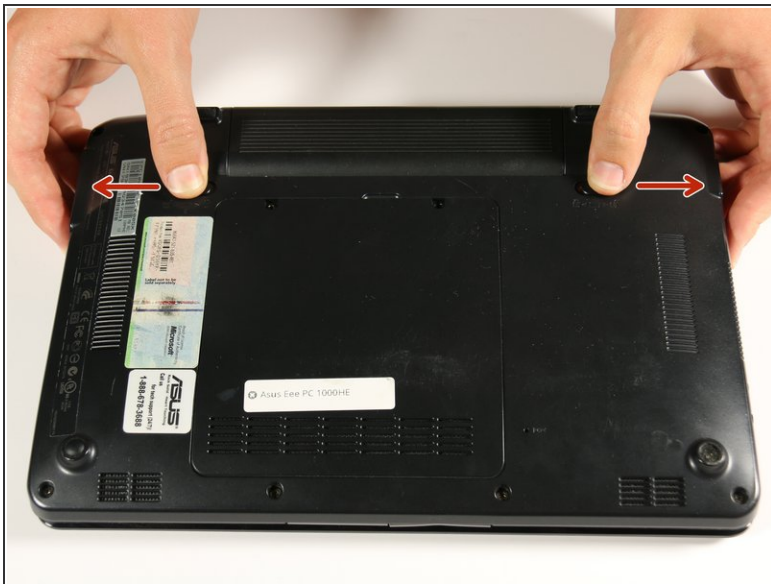
- [Spudger](#) (1)
  - [iFixit Opening Tools](#) (1)
-

## Step 1 — Battery



- Lay the laptop down with the bottom facing upwards.
- Locate the two battery lock slide tabs.



## Step 2



- Slide the tabs outward to unlock the battery.
- ⓘ The right tab will remain in the unlocked position while the left tab must be held.
- While holding the left tab outward, slide the battery away from you to remove it.

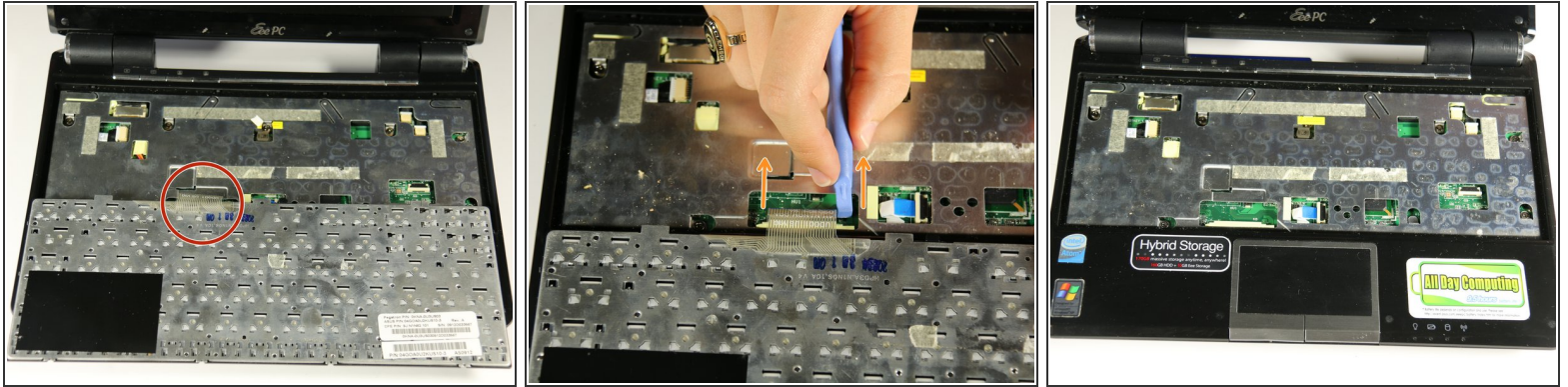
## Step 3 — Keyboard



-  The keyboard will still be attached to the body of the netbook at the conclusion of this step through a ribbon cable located at the bottom edge of the keyboard. Improper removal may result in damage to your device.
- Identify the four connection points holding the top of the keyboard to the main body of the netbook. To remove the keyboard, use the spudger to unhook the keyboard upwards at these points.
  -  The keyboard will become more disconnected as you use the spudger at each connection point.



## Step 4



- Flip the keyboard over by pulling the top edge of the keyboard away from the netbook body, using the bottom edge as a hinge point.
- Locate the opaque strip, or ribbon cable, connecting the back of the keyboard to the hardware of the netbook.
- To disconnect the ribbon cable, use a plastic opening tool to pull each side of the black plastic strip, located below the ribbon cable, away from the ribbon cable.
- The black strip will disconnect completely from the ribbon cable. The keyboard will then be detached from the netbook's body and can be safely removed.

To reassemble your device, follow these instructions in reverse order.