



Asus Eee PC 1201HAB Hard Drive Replacement

This guide will teach you how to remove and replace the hard drive in your Asus Eee PC 1201HAB.

Written By: Katherine Chan



This document was generated on 2019-10-15 02:29:17 AM (MST).

INTRODUCTION

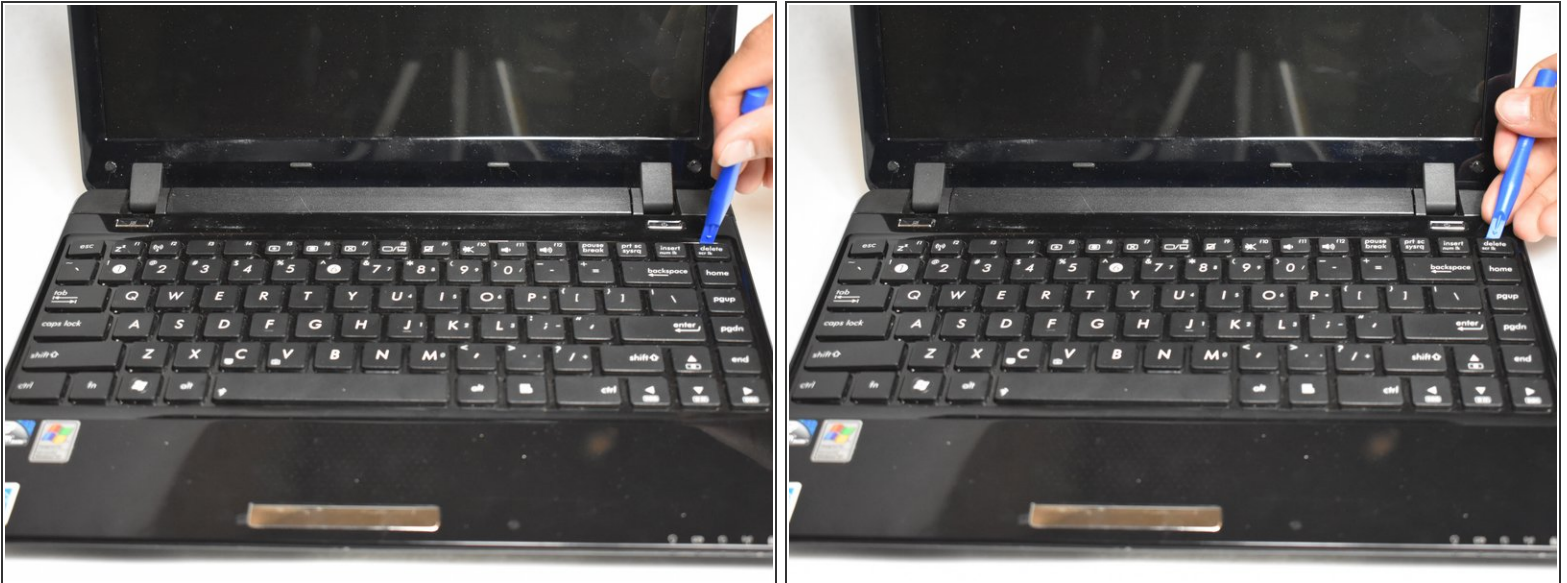
If you are having troubles with your hard drive, this guide will teach you how to remove and replace it.



TOOLS:

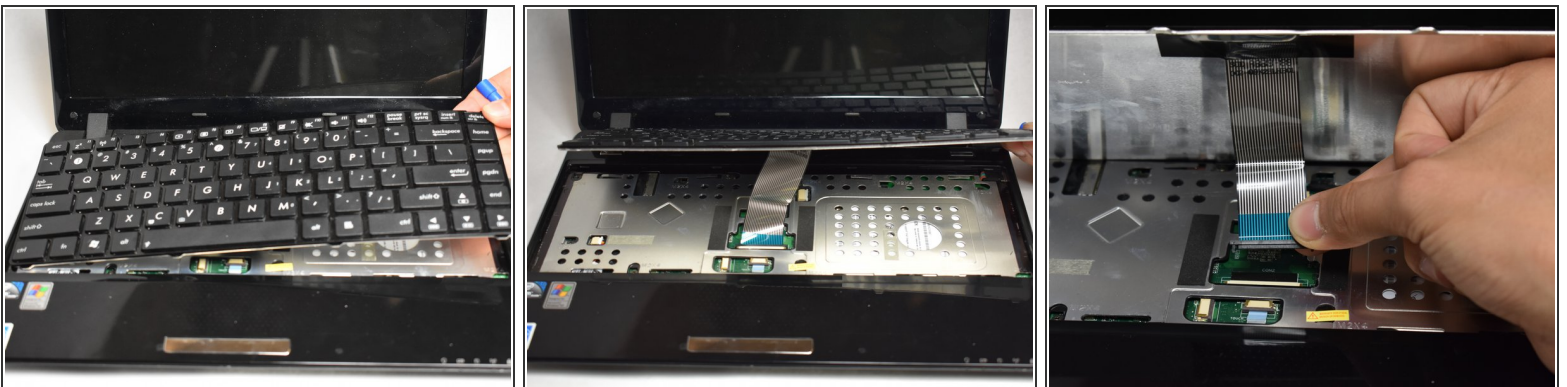
- [iFixit Opening Tools](#) (1)
 - [Phillips #0 Screwdriver](#) (1)
-

Step 1 — Keyboard



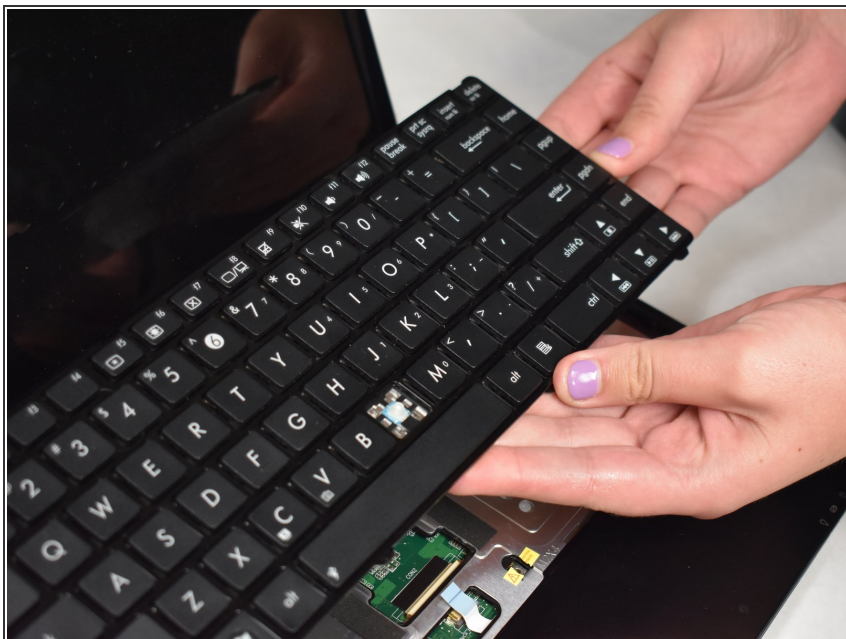
- Use a plastic opening tool and carefully pry the top panel from the base.

Step 2



- Slowly lift the keyboard from the base.
- Disconnect the attached ribbon from under the keyboard.

Step 3



- Remove the keyboard.

Step 4 — Hard Drive



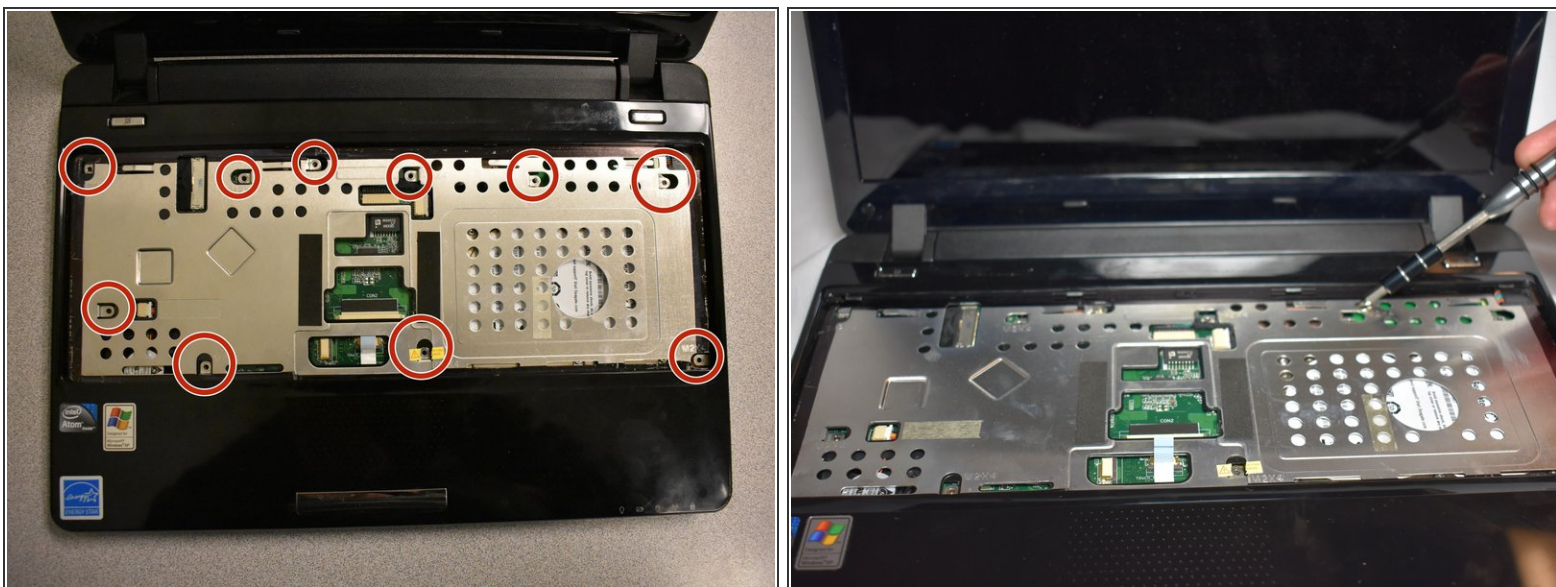
- Lay the laptop with the back facing up.
- With a Phillips #0 screwdriver, remove the eight 6mm screws on the back of the laptop.

Step 5



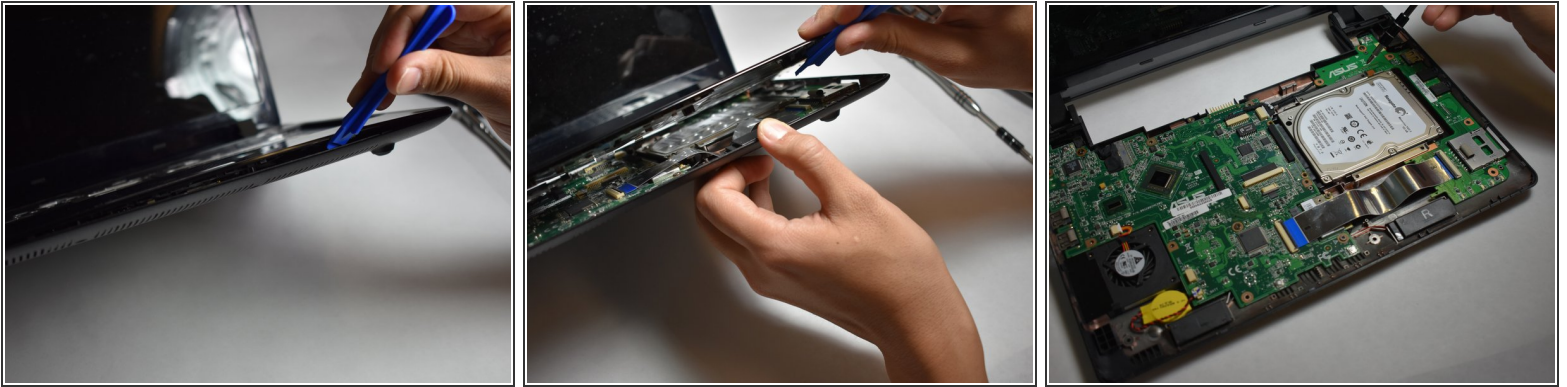
- Slide the tabs outward to remove the battery.

Step 6



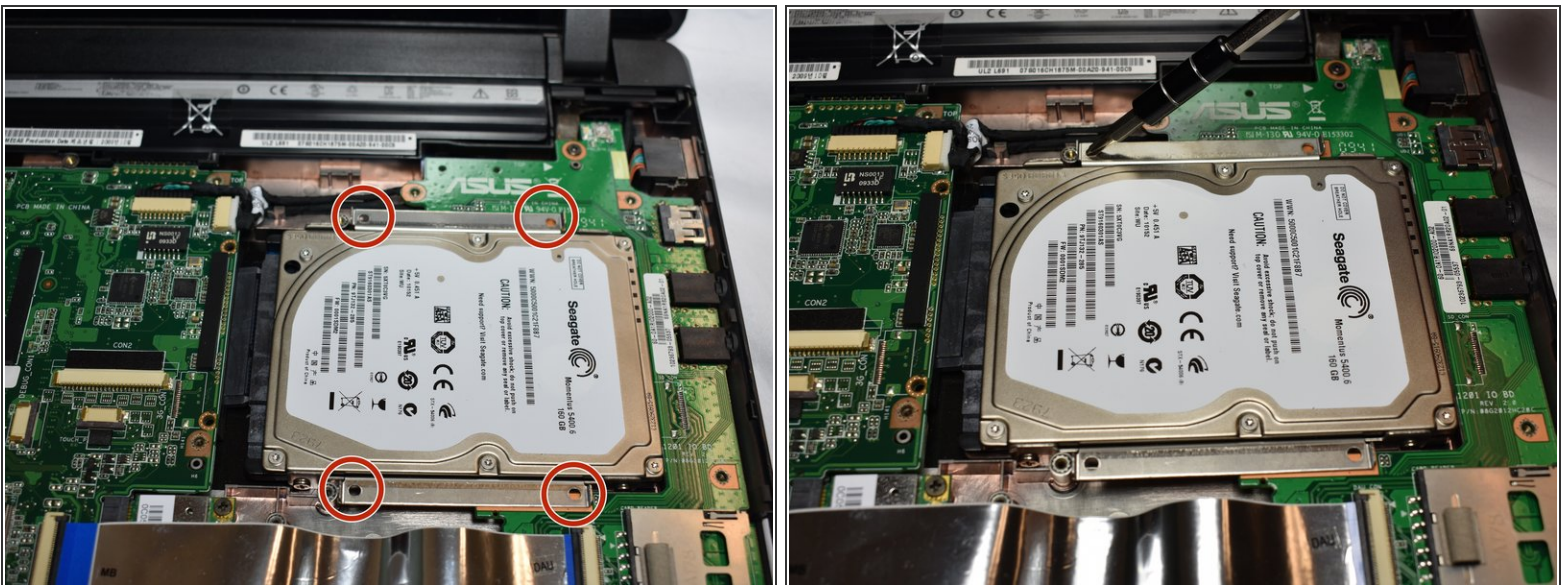
- Flip the device so that you are facing the screen.
- Remove the ten 4mm screws on the silver panel under the keyboard using a Phillips #0 screwdriver.

Step 7



- Using a plastic opening tool, remove the top panel of the laptop.

Step 8



- Using a Phillips #0 screwdriver, remove the four 4mm screws connecting the hard drive.

Step 9



- Remove and replace the hard drive.

To reassemble your device, follow these instructions in reverse order.