



Asus Eee PC 1215N Hard Drive Replacement

Hard drive Removal / installation.

Written By: Gaetan





TOOLS:

- [Anti-Static Wrist Strap](#) (1)
- [Phillips #00 Screwdriver](#) (1)
- [iFixit Opening Tools](#) (1)
- [Spudger](#) (1)



PARTS:

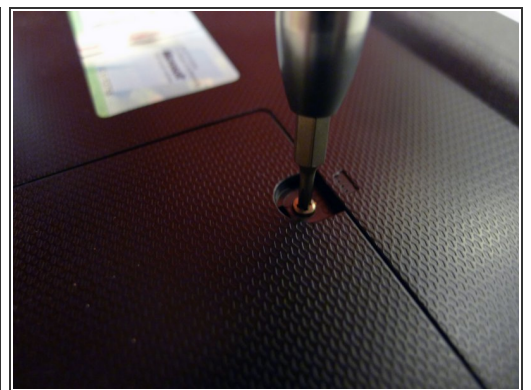
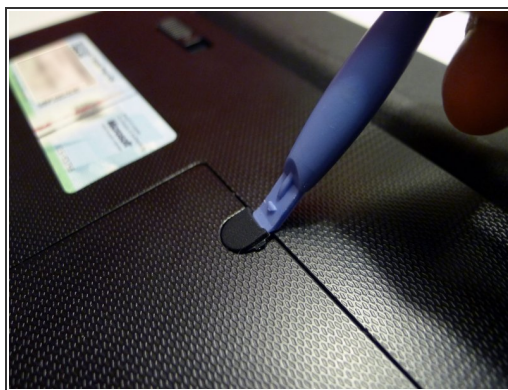
- [1 TB SSD / Upgrade Bundle](#) (1)
- [250 GB SSD / Upgrade Bundle](#) (1)
- [500 GB SSD / Upgrade Bundle](#) (1)
- [2 TB SSD / Upgrade Bundle](#) (1)

Step 1 — Battery



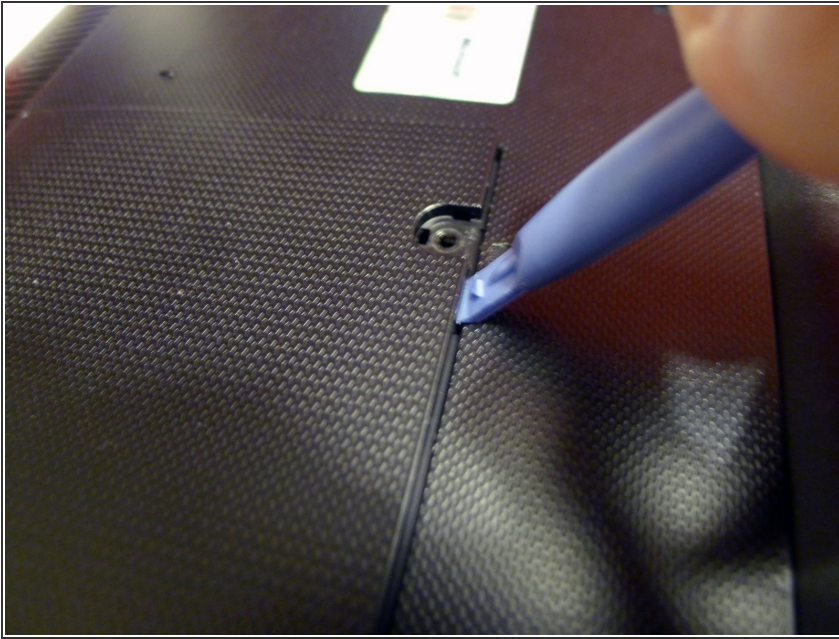
- Turn the power off and turn the netbook upside down.
- Slide both battery catches together to release the battery.
- Slide the battery out.

Step 2 — RAM



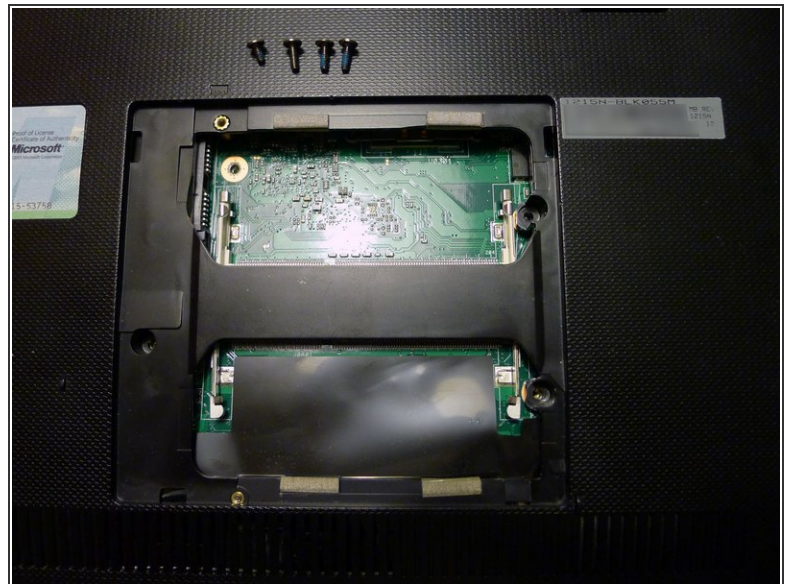
- Locate the memory compartment.
 - Using a [Plastic Opening Tools](#), remove the screw rubber cover.
 - Remove the screw.

Step 3



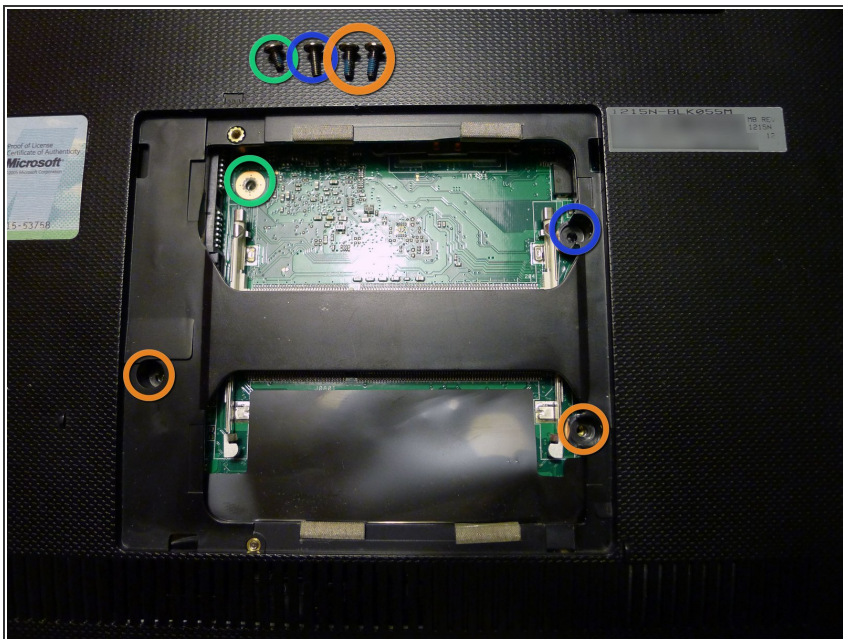
- Use a [Plastic Opening Tools](#) near the screw hole to release the cover.
- Remove the cover

Step 4



- Using a [Spudger](#), push both right and left metal clip to release one of the RAM module.
- Slide out the RAM module.
- Do the same with the second RAM module if necessary.

Step 5 — Top Cover (Touchpad)



- Remove the screws as necessary.
 - For top cover removing, only remove the 2 bottom screws.
- ⓘ For Keyboard removing, remove all 4 screws.
- The one short screw patterns to uper left screw hole directly on the PCB.

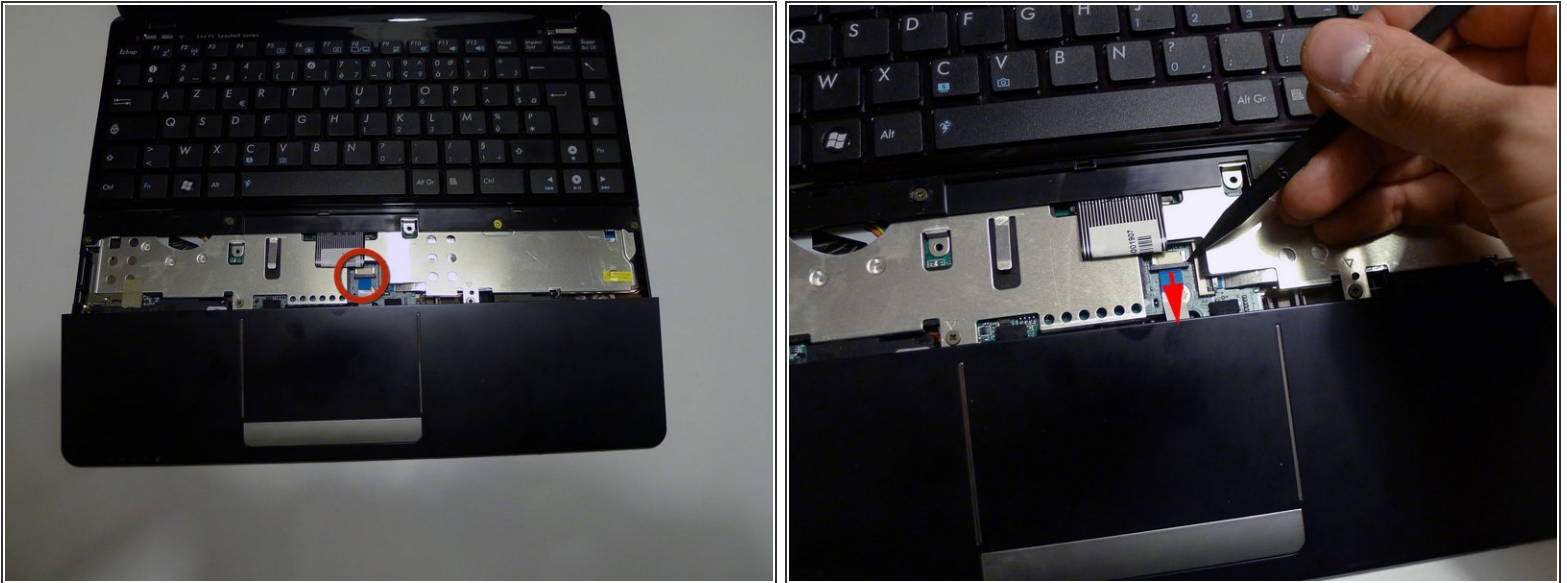
Step 6



- Use a [Plastic Opening Tools](#) to release the top cover.
 - Start from the left side.
 - Go around on the bottom
 - Finish with the right side.

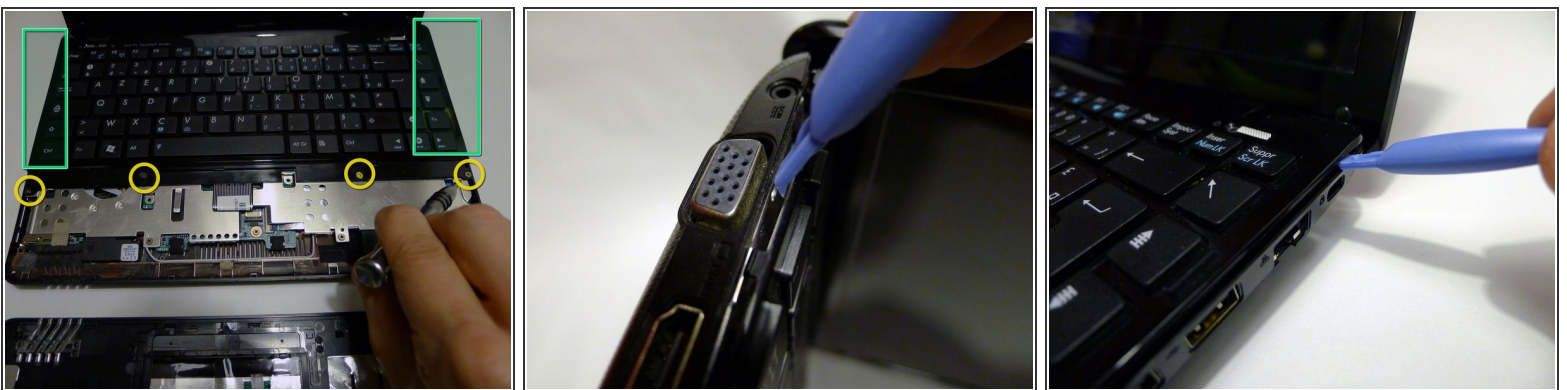
⚠ The top cover is still connected to the PCB with the touchpad ribbon. Handle it carefully.

Step 7



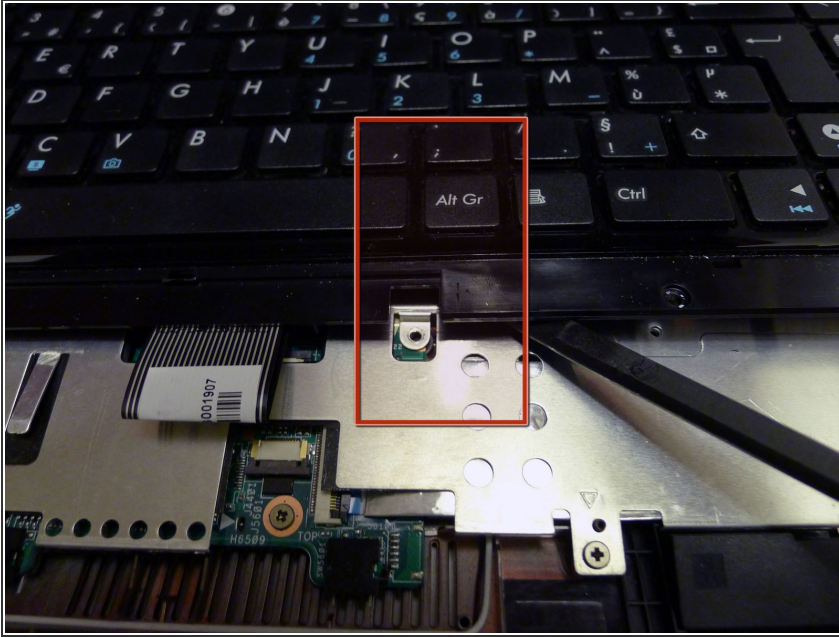
- Carefully slide the top cover to the bottom in order to see the touchpad connector on the PCB.
- Use a [Spudger](#) to slide the conector attachment black part and release the ribbon from the PCB.
- Now you can remove the top cover

Step 8 — Keyboard



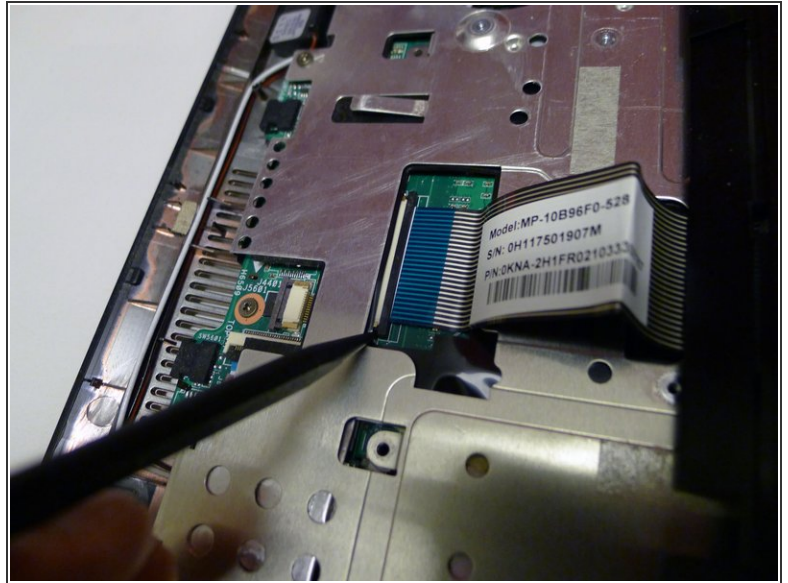
- ⚠ Make sure that the two upper screws inside the RAM compartment are removed before to continue. (Refer to Step 5).
- Remove the keyboard 4 screws on the bottom.
- Use a [Plastic Opening Tools](#) to release the keyboard clips on the left and right side.

Step 9



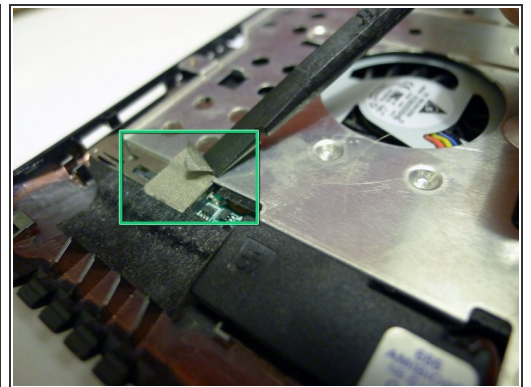
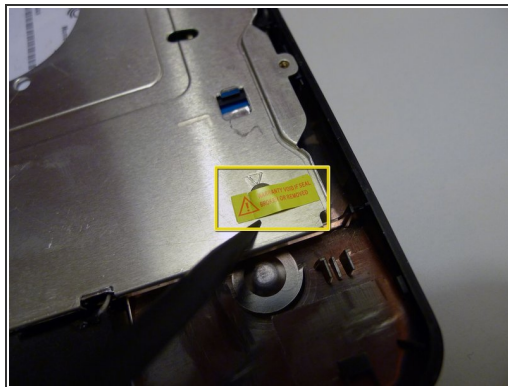
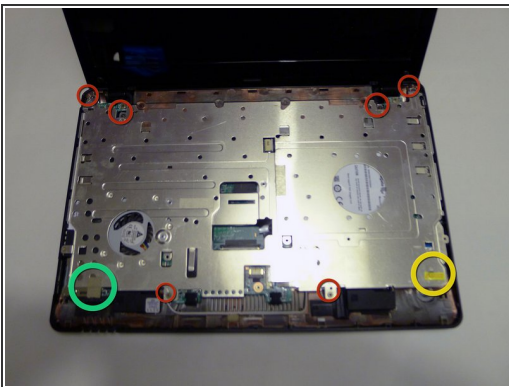
- ❗ At this step, the keyboard is still maintained with double-sided tape between the keyboard underside and the metallic PCB protector.
- Carefully slide a [Spudger](#) between the keyboard underside and the metallic PCB protector near the center/right at the bottom. Use the spudger as a lever to release the keyboard from the metallic PCB protector.
- ⚠ The keyboard is still connected to the PCB with a ribbon. Handle it carefully.

Step 10



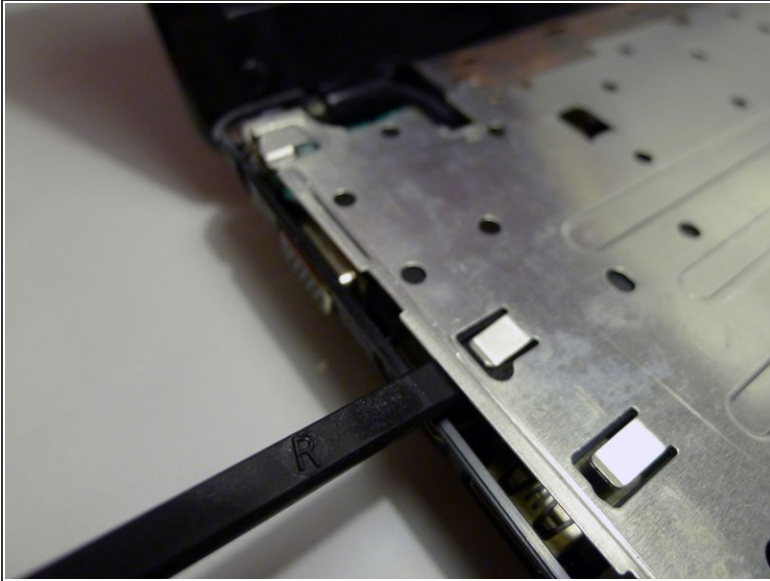
- Carefully slide the keyboard to the top in order to see the ribbon connector on the PCB.
- Use a [Spudger](#) to slide the connector attachment black part and release the ribbon from the PCB.
- Now you can remove the keyboard.

Step 11 — Metallic PCB protector plate



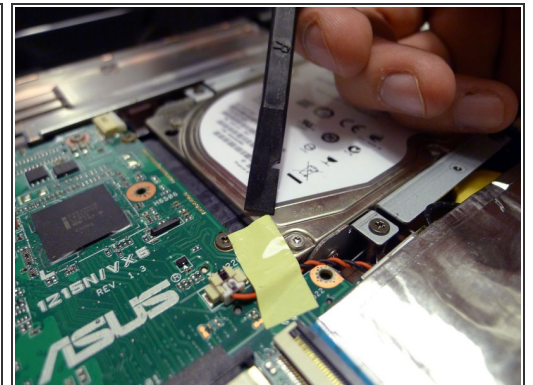
- Peel off the protective tape at the bottom left corner.
- Peel off the warranty void at the bottom right corner and remove the screw below.
- Remove the 6 other screws.

Step 12



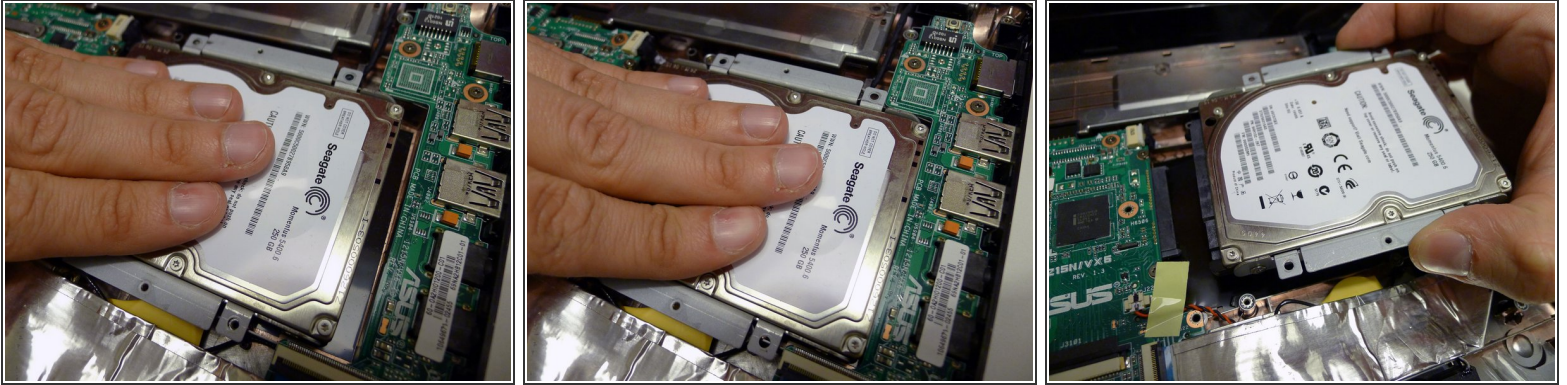
- Remove the protector plate.

Step 13 — Hard Drive



- Remove the four Phillips #00 screws from the hard drive caddy.
- Peel off any tape covering the hard drive, there is no need to remove it entirely.

Step 14



- Unplug the hard drive by sliding it to the right, toward the USB ports.
- Remove the hard drive.

To reassemble your device, follow these instructions in reverse order.