



Asus Eee PC 900 Keyboard Replacement

Installing a new keyboard for an Asus Eee 900 Laptop.

Written By: Sheldon Chu





TOOLS:

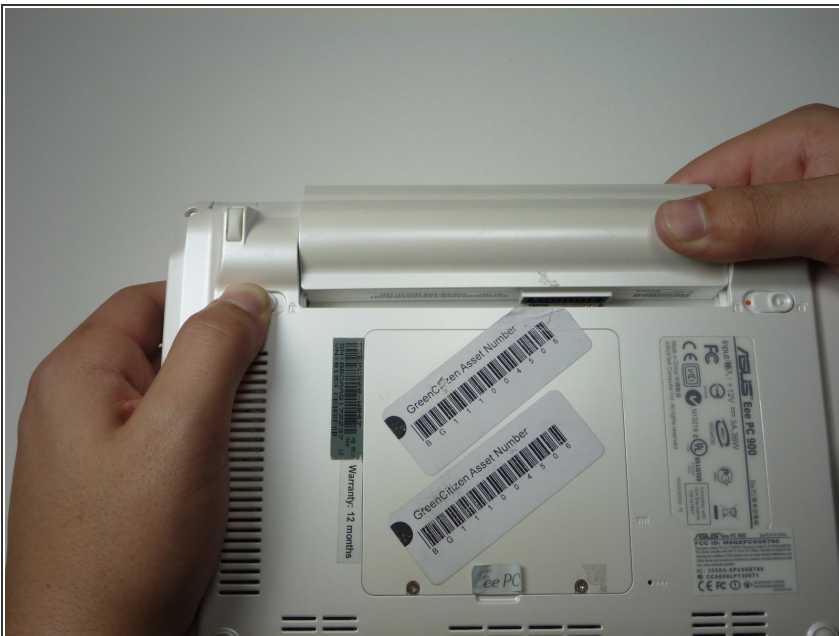
- [Spudger](#) (1)
-

Step 1 — Battery



- Slide the battery's locking tabs from the locked position to unlocked positions.
 - The right tab is unlocked when a red dot is showing.
 - The left tab will have to be held in the unlocked position in order to release the battery.

Step 2



- Slide the battery out while holding the left locking tab in the unlocked position.

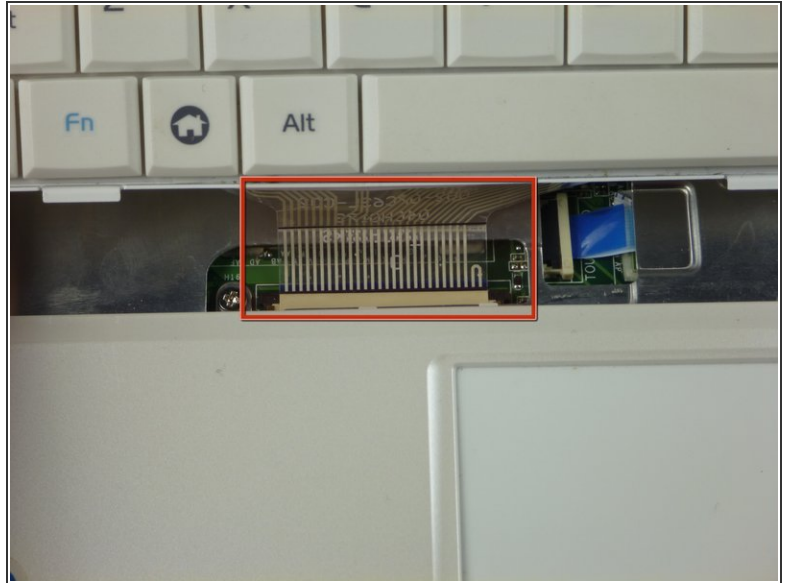
Step 3 — Keyboard



⚠ Caution Follow this step to detach the upper portion of the keyboard, but do not remove it from the laptop. Damage to the keyboard's ribbon cable may result if improperly executed.

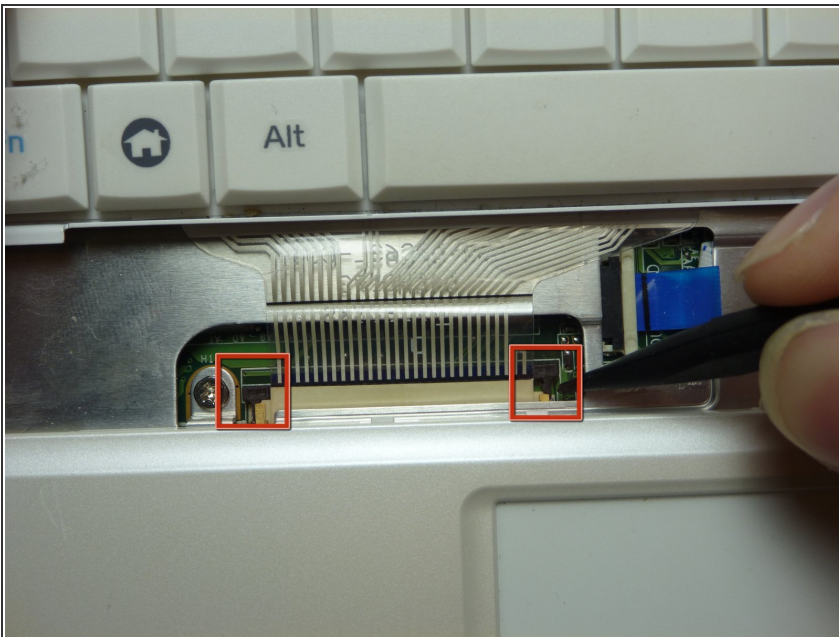
- Identify the three metal tabs holding down the laptop's keyboard.
- Using a spudger, depress each metal tab to remove the keyboard.
- ⓘ The upper part of the keyboard should "pop up" from its holder.

Step 4



- Clips hold the bottom portion of the keyboard to the laptop. Gently lift the upper portion of the keyboard and then move the entire keyboard towards the computer's screen until the ribbon cable is visible.

Step 5



- Using a spudger, gently push the two black pins holding the ribbon cable towards the computer's screen.
- Slide the keyboard's ribbon cable from the connector.

Step 6



- Remove the keyboard by lifting upwards.

To reassemble your device, follow these instructions in reverse order.