



Asus Eee Pc 1000 HD Touchpad Replacement

How to remove touchpad from device to prepare for replacement

Written By: Lauren Jensen



INTRODUCTION

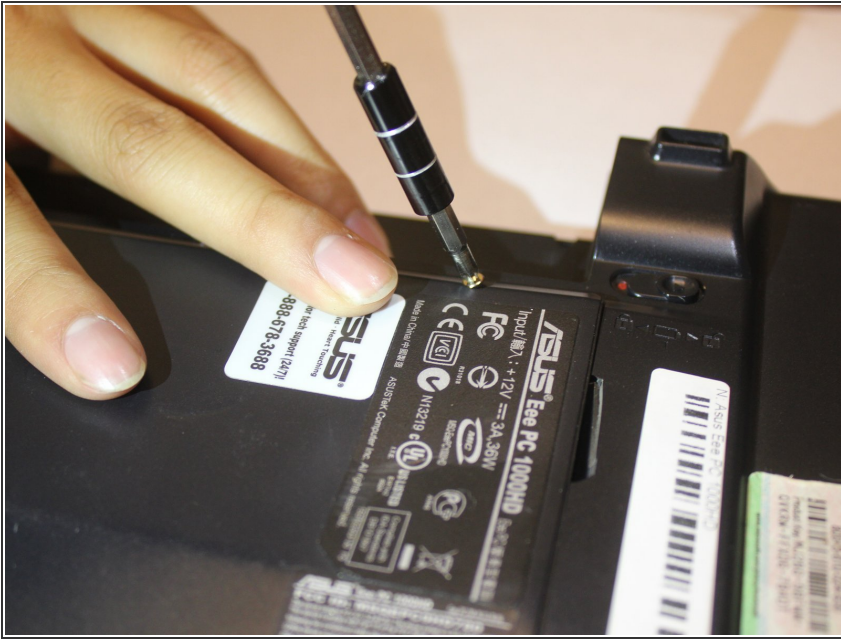
Requires removal of keyboard and battery before attempting



TOOLS:

- [Phillips #1 Screwdriver](#) (1)
-

Step 1 — Touchpad



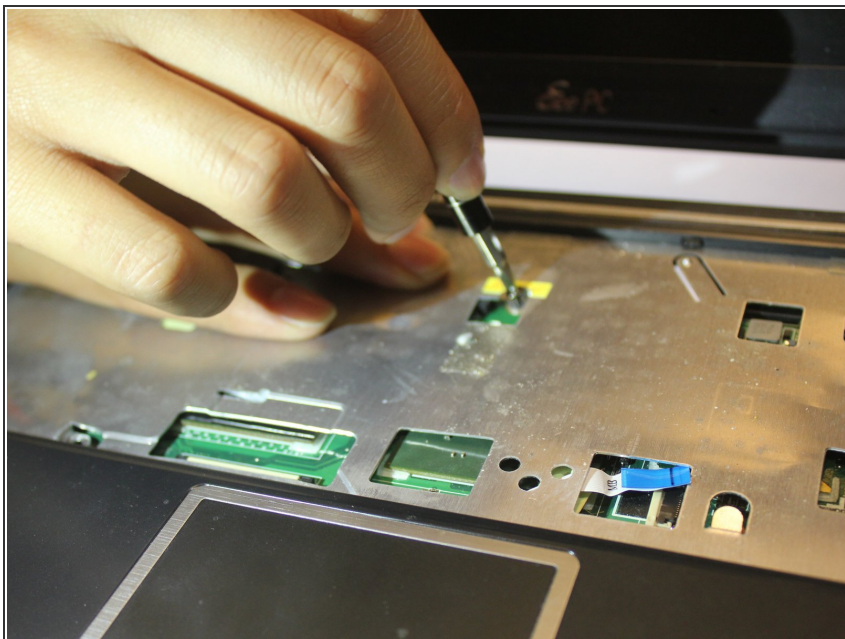
- Unscrew the 2 screws on the CPU/Access panel on the back of the device

Step 2



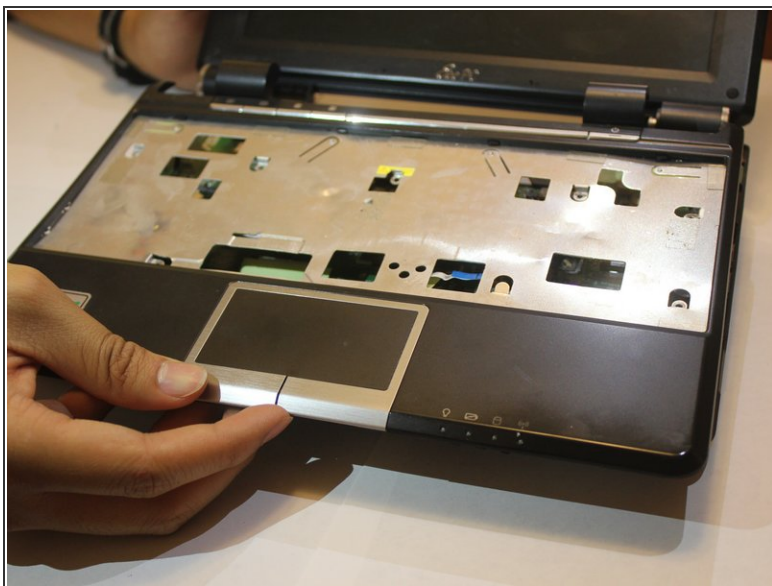
- Ensure all screws in the battery area are unscrewed and lift access panel

Step 3



- Unscrew the 8 screws on the back chassis and the 7 screws on the keyboard area

Step 4



- Remove the touchpad chassis to fully separate it from the device
- Follow steps in reverse when inserting a new keyboard

To reassemble your device, follow these instructions in reverse order.