



Asus F555LA-AB31 Network Card Replacement

This guide will show you how to remove and replace the network card in your Asus F555LA-AB31 laptop.

Written By: David Burns

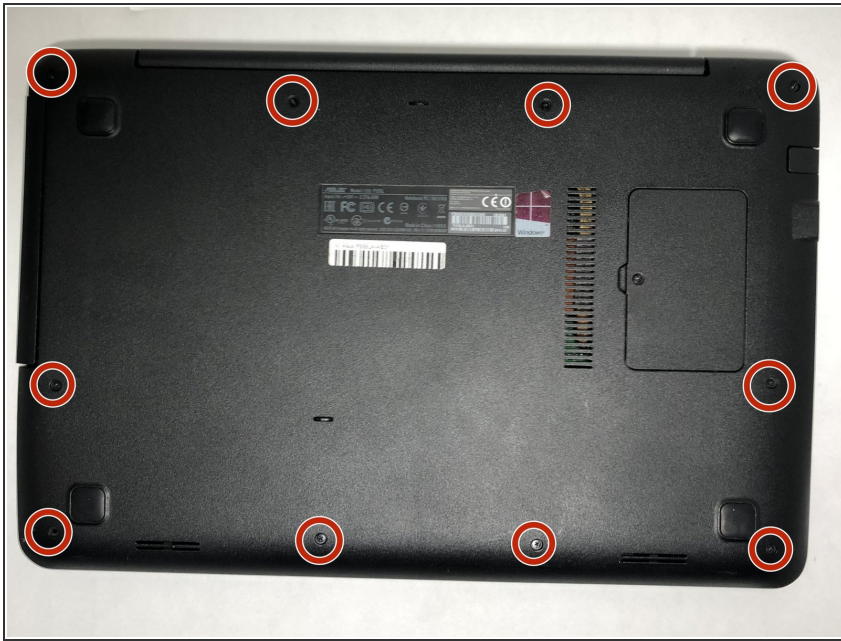




TOOLS:

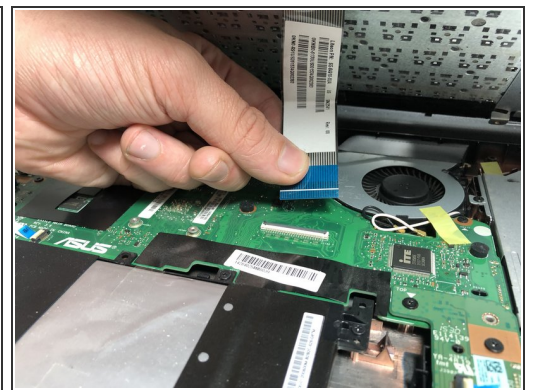
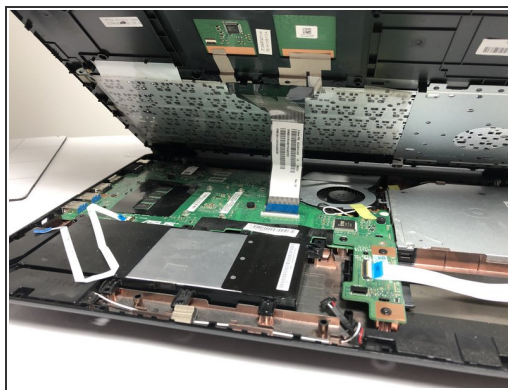
- [Phillips #0 Screwdriver](#) (1)
-

Step 1 — CD Drive



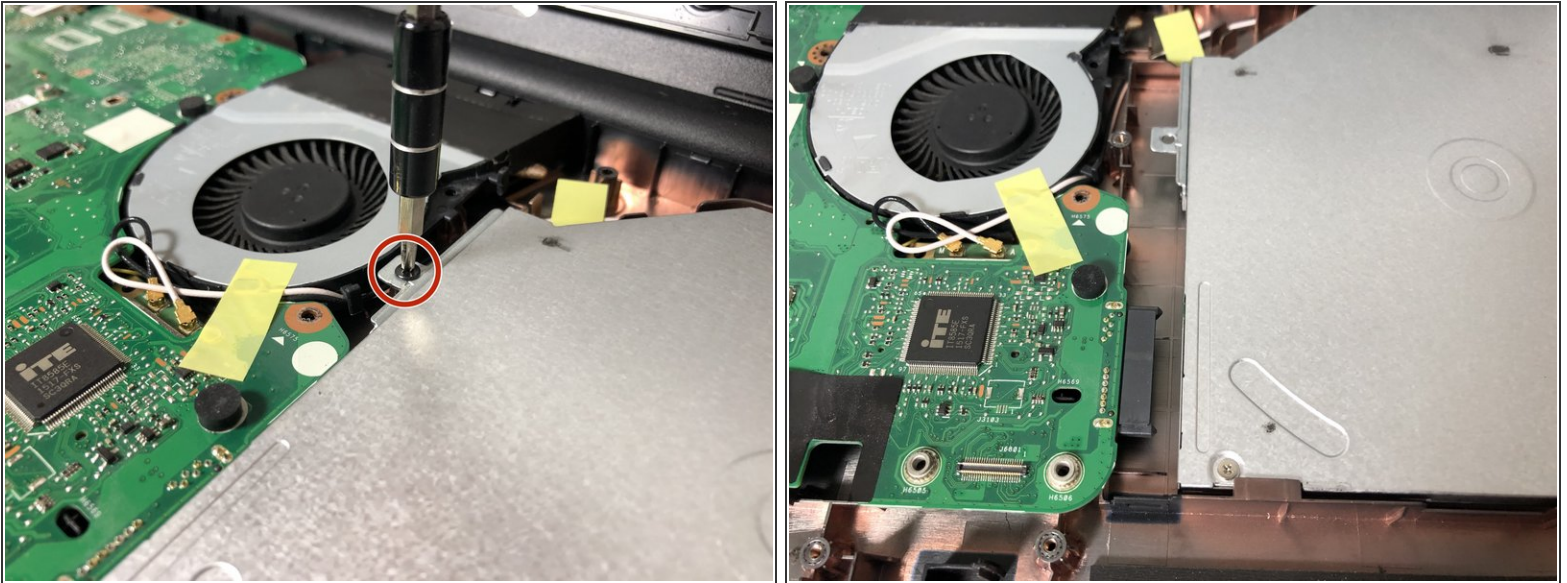
- Remove ten 18mm Phillips #0 screws from the backside of the device.
- ⓘ Removal of the RAM access panel is not necessary.

Step 2



- Open the laptop.
 - Begin to pry upward on the edges of the faceplate in order to separate the keyboard and trackpad from the rest of the device.
- ⚠ Be cautious of the cables connecting the keyboard and trackpad to the motherboard.
- To remove the ZIF connector, gently lift upward on the blue tab to disconnect it from the motherboard.

Step 3



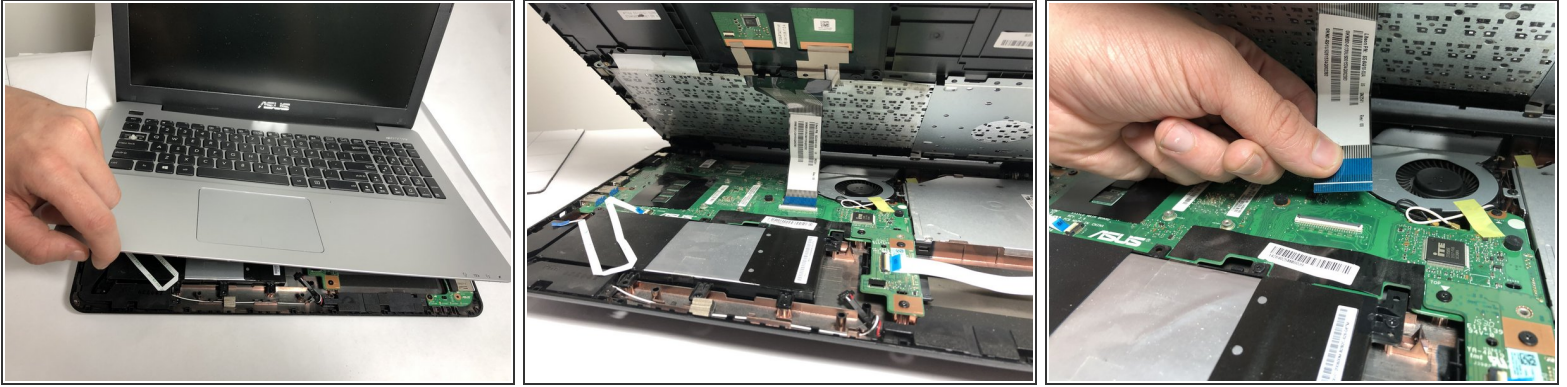
- Fold the faceplate upwards towards the screen to fully expose the inside of the laptop.
- Remove the CD Drive by unscrewing the single Phillips #0 screw and sliding the drive away from the motherboard.

Step 4 — Hard Drive



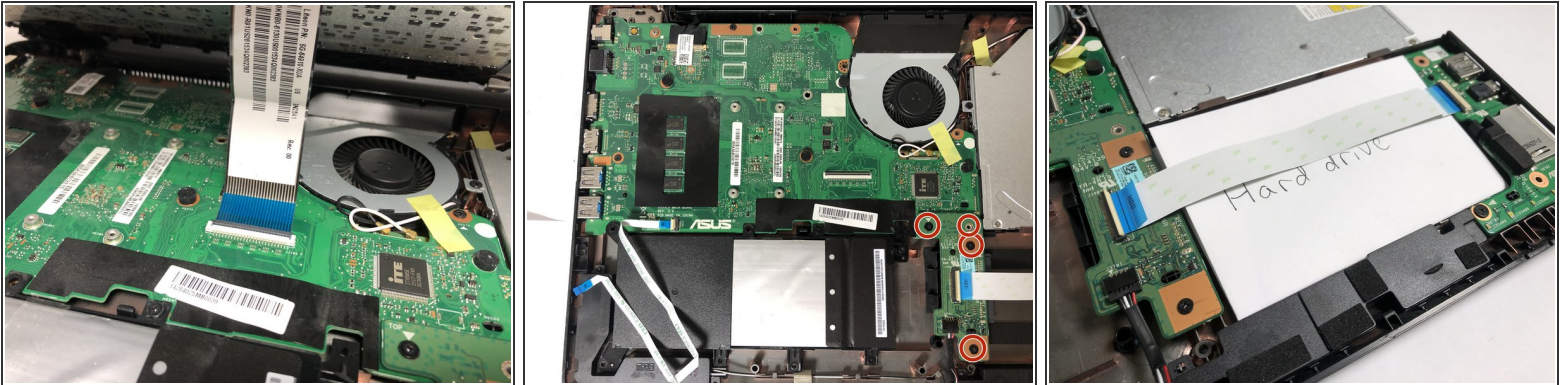
- Remove ten 18mm Phillips #0 screws from the backside of the device.
- ⓘ Removal of the RAM access panel is not necessary.

Step 5



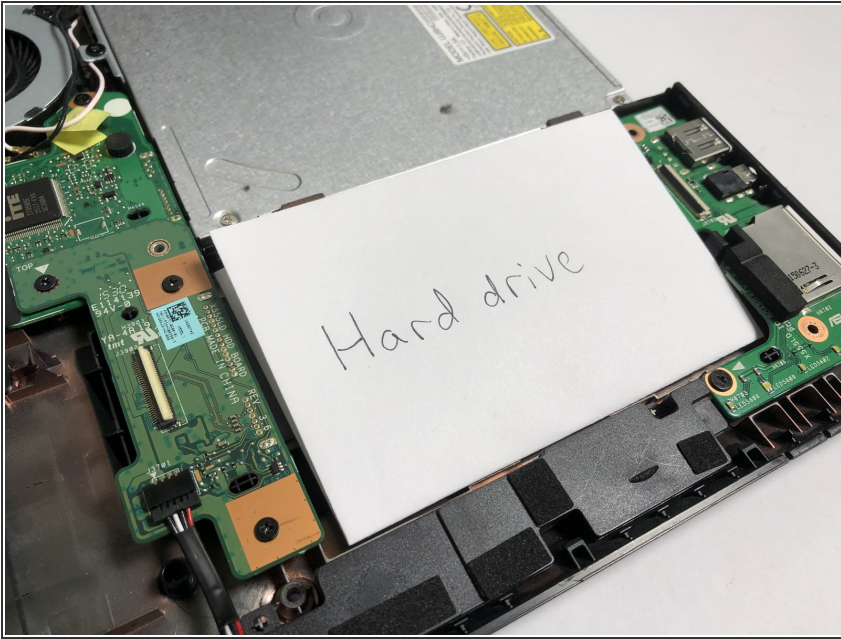
- Carefully fold the device open.
 - Begin to pry upward on the edges of the faceplate in order to separate the keyboard and trackpad from the rest of the device.
- ⚠ Be cautious of the cables connecting the keyboard and trackpad to the motherboard.
- To remove the ZIF connector, gently lift upward on the blue tab to disconnect it from the motherboard.

Step 6



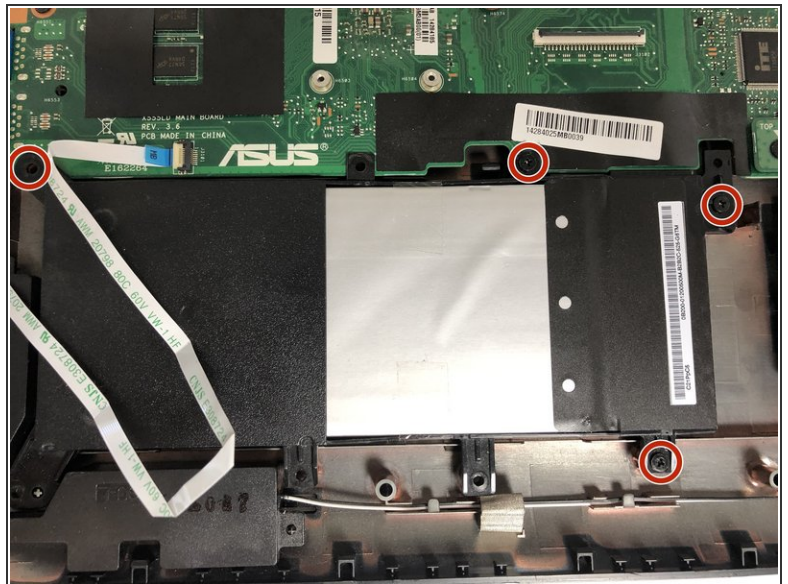
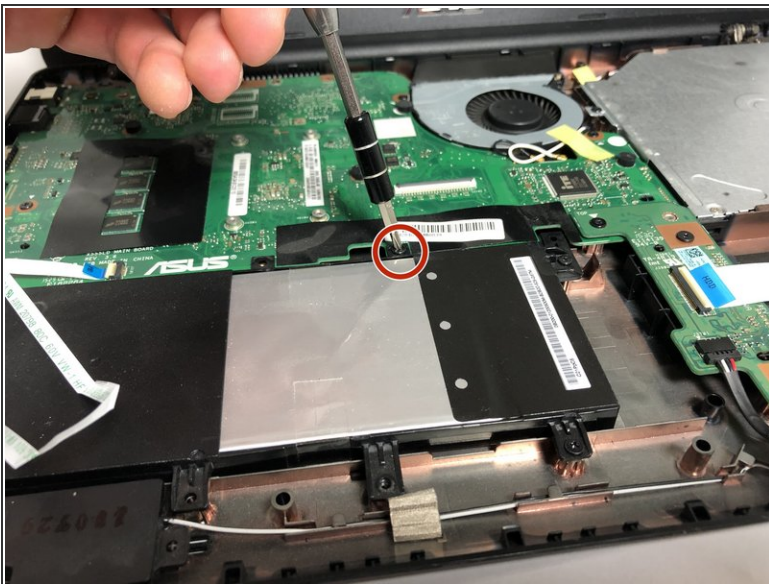
- Fold the keyboard section of the laptop up towards the screen to fully expose the inside of the device.
- Unscrew the four 4mm Phillips #0 screws holding down the hard drive.

Step 7



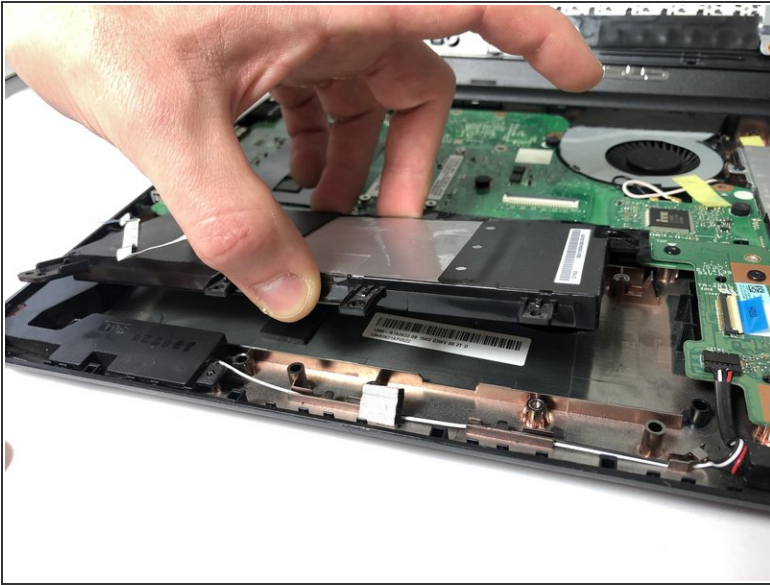
- Disconnect the ZIF connector and lift the hard drive out of the space.

Step 8 — Battery



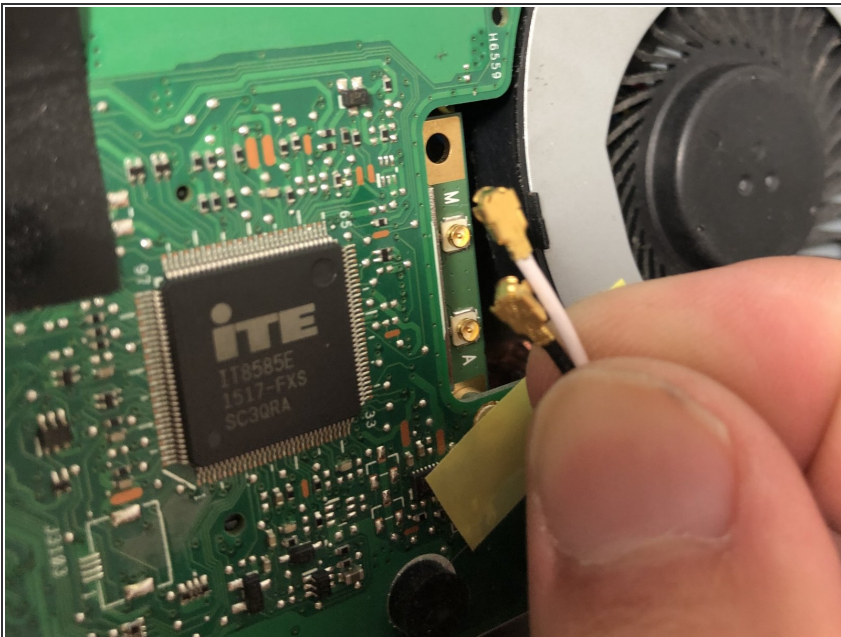
- Remove the 4mm Phillips #0 screws.

Step 9



- Lift up battery and remove.

Step 10 — Network Card



- Disconnect the two wires connected to the network card.

Step 11



- Remove the seven Phillips #0 screws holding the motherboard down.
- Lift the motherboard upwards, folding it towards the laptop chassis.
- Unscrew the Phillips #0 screw holding down the network card, and slide it out.

To reassemble your device, follow these instructions in reverse order.