



# Asus G750JW-BBI7N05 Display Replacement

This guide will help you repair your display by replacing a damaged screen on your Asus g750JW-BB17N05 laptop.

Written By: Sandy Jewell



## INTRODUCTION

Display problems can be caused by a cracked screen. Cracks can appear as jagged lines or look like a spider's web. These cracks can affect just a portion of your display or disable your display completely. Follow this guide to replace your screen and restore your display.



### TOOLS:

- [Phillips #00 Screwdriver](#) (1)
  - [iFixit Opening Tools](#) (1)
-

## Step 1 — Battery



- Power off and unplug your laptop, then turn it over.

## Step 2



- Slide the battery release latch all the way to the right. This will cause the battery to "pop" out slightly.

## Step 3



- Remove the battery from its compartment.

## Step 4 — Display



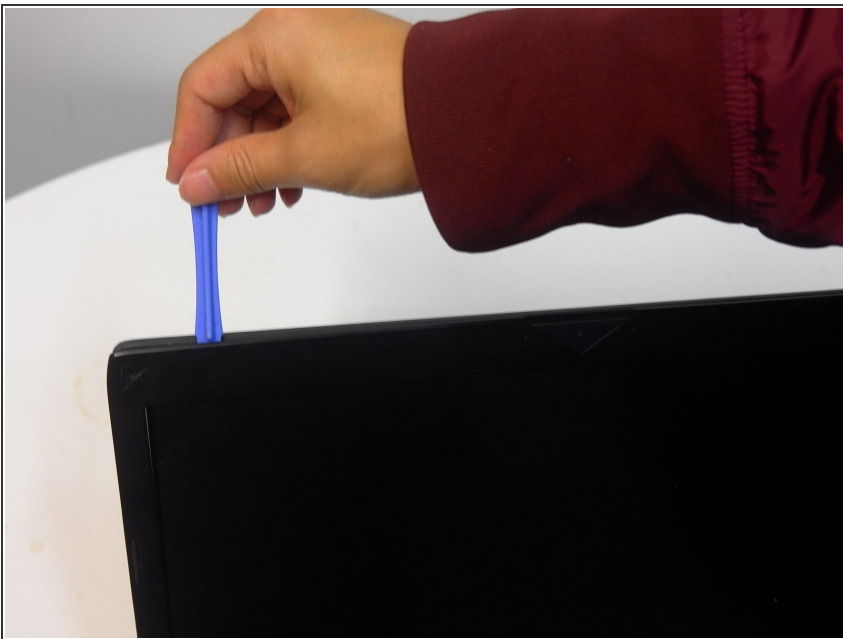
- Place your laptop in the upright and open position.

## Step 5



- Remove the four 4mm Phillips #00 screws from the four corners of the display.

## Step 6



- Gently pry the front bezel away from the screen and back bezel with an opening tool.
  - ⓘ The bezel is the outside plastic frame surrounding the screen.
  - ⓘ You will feel and hear the bezel "unsnap" as you move the pry tool around the entire display.

## Step 7



- ★ As you work, be mindful of other components that surround the screen, like the WiFi antenna, Bluetooth, webcam, and microphone.
- Remove the six 6mm Phillips #00 screws across the top of the screen and the four 6mm Phillips #00 screws at the bottom of the screen.

## Step 8



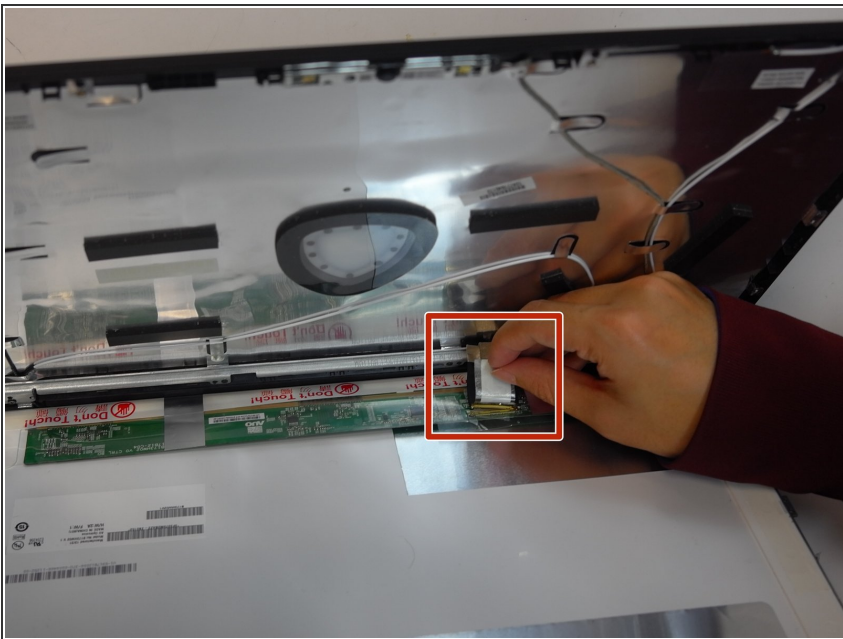
- i With the screws removed, the metal bracket surrounding the screen will feel loose.
- Remove the top bracket by pulling upwards on the tabs.

## Step 9



- Remove the four 3mm Phillips #00 screws from the sides of the screen.

## Step 10



- With the screen free, tilt it gently forward to reveal the display data cable.
- Unplug the display data cable by peeling off the clear sticker covering its connector, then pulling this connector out of its socket.
- ⚠ Make sure to *only* peel off the sticker that covers the display data cable connector.

## Step 11



- Remove the two side brackets from the sides of the screen by removing the six 3mm Phillips #00 screws attaching it. There are three screws on either side of the screen.

To reassemble your device, follow these instructions in reverse order.